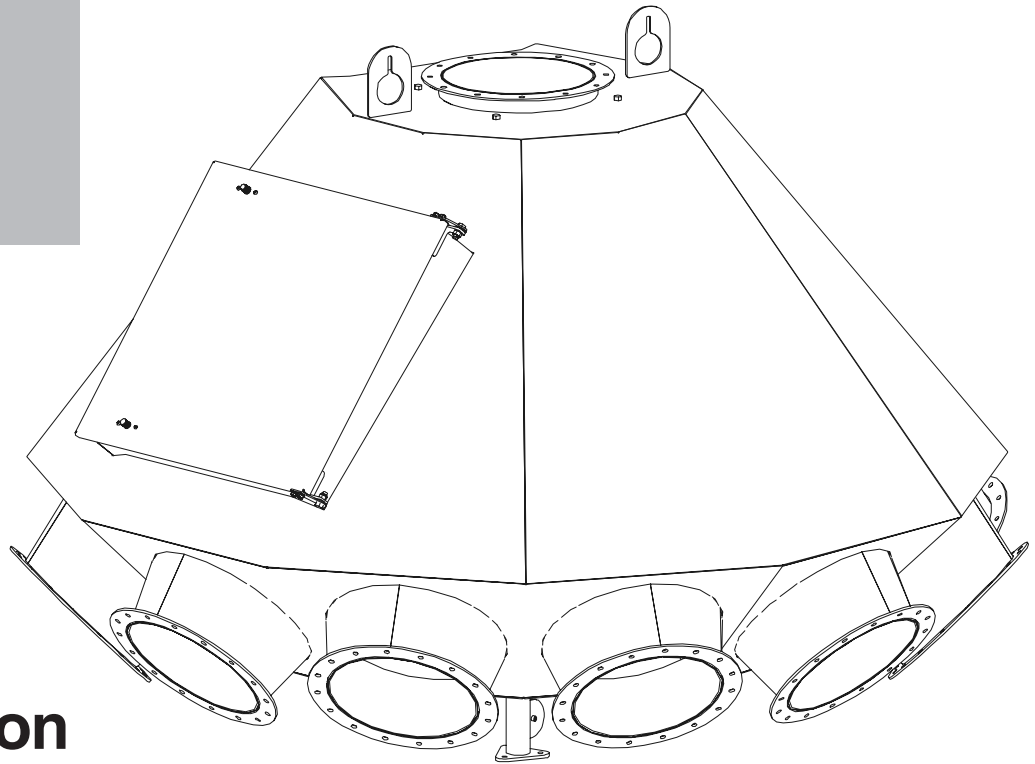


Farm/Commercial Distributor



Instruction Manual PNEG-1385

DATE: 6-16-04



PNEG-1385

Table of Contents

Safety Guidelines	4
Introduction	6
Installation Notes	7
Maintenance	8
Replacing Wear Liner	8
Grease Bearing	8
Replace Brush Assembly	10
Parts	11
DFB08645GL (8" 6 Hole)	12
DFB08845GL (8" 8 Hole)	13
DFB081045GL (8" 10 Hole)	14
DFB10645GL - Drawing A (10" 6 Hole)	15
DFB10645GL - Drawing B (10" 6 Hole)	16
DFB10845GL (10" 8 Hole)	17
DFB101045GL (10" 10 Hole)	18
DFB12445GL (12" 4 Hole)	19
DFB12645GL (12" 6 Hole)	20
DFB12845GL (12" 8 Hole)	21
Warranty	Inside Back Cover

SAFETY GUIDELINES

This manual contains information that is important for you, the owner/operator, to know and understand. This information relates to protecting **personal safety** and **preventing equipment problems**. It is the responsibility of the owner/operator to inform anyone operating or working in the area of this equipment of these safety guidelines. To help you recognize this information, we use the symbols that are defined below. Please read the manual and pay attention to these sections. Failure to read this manual and it's safety instructions is a misuse of the equipment and may lead to serious injury or death.



This is the safety alert symbol. It is used to alert you to potential personal injury hazards. Obey all safety messages that follow this symbol to avoid possible injury or death.



DANGER indicates an imminently hazardous situation which, if not avoided, will result in death or serious injury.



WARNING indicates a potentially hazardous situation which, if not avoided, could result in death or serious injury.



CAUTION indicates a potentially hazardous situation which, if not avoided, may result in minor or moderate injury.



CAUTION used without the safety alert symbol indicates a potentially hazardous situation which, if not avoided, may result in property damage.



NOTE indicates information about the equipment that you should pay special attention to.

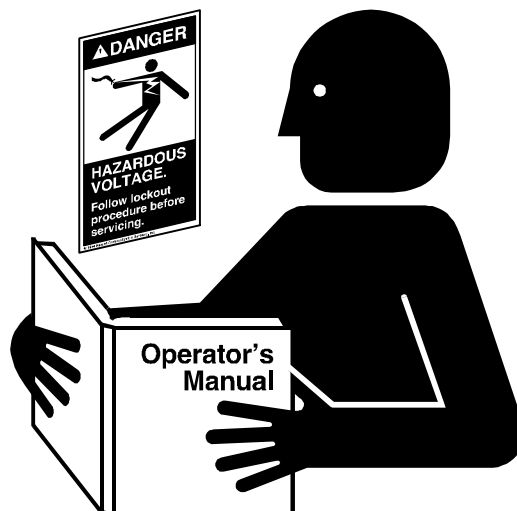
FOLLOW SAFETY INSTRUCTIONS

Carefully read all safety messages in this manual and on your machine safety signs. Keep signs in good condition. Replace missing or damaged safety signs. Be sure new equipment components and repair parts include the current safety signs. Replacement safety signs are available from the manufacturer.

Learn how to operate the machine and how to use controls properly. Do not let anyone operate without instruction.

Keep your machinery in proper working condition. Unauthorized modifications to the machine may impair the function and/or safety and affect machine life.

If you do not understand any part of this manual and need assistance, contact your dealer.

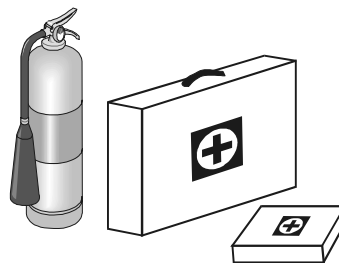


PREPARE FOR EMERGENCIES

Be prepared if fire starts.

Keep a first aid kit and fire extinguisher handy.

Keep emergency numbers for doctors, ambulance service, hospital, and fire department near your telephone.



WEAR PROTECTIVE CLOTHING

Wear close fitting clothing and safety equipment appropriate to the job.

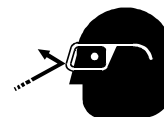
Safety glasses should be worn at all times to protect eyes from debris.

Wear gloves to protect your hands from sharp edges on plastic or steel parts.

A respirator may be needed to help prevent breathing potentially toxic fumes and dust.

Wear hard hat and steel toe boots to help protect your head and toes from falling debris.

Eye
Protection



Gloves



Steel Toe
Boots



Respirator



Hard Hat



Introduction

Thank you for choosing this product. It is designed to give excellent performance and service for many years.

This manual covers general information on the distributor installation. Due to the wide variety of field conditions we cannot cover every aspect of installation. We offer one method for installing equipment but, rely on your qualified contractor's experience and techniques. Some conditions and surroundings do not allow certain practices during the installation of equipment. We can not be responsible for the installation of the distributor and accessories. We encourage anyone installing, or maintaining this equipment to thoroughly read this manual before proceeding.

The company is the vendor of the distributor and certain of its optional accessories only, and does not assume responsibility for the installation. The installation recommendations contained within this manual are for consideration only.

READ THIS MANUAL carefully to learn how to properly use and install this equipment. Failure to do so could result in personal injury or equipment damage.

INSPECT the shipment immediately upon arrival. The Customer is responsible for ensuring that all quantities are correct. Report any damage or shortages by recording a detailed description on the Bill of Lading to justify the Customer's claim from the Transport Firm. Our responsibility for damage to the equipment ends with acceptance by the delivering carrier. Save all paperwork and documentation furnished with any of the equipment.

THIS MANUAL SHOULD BE CONSIDERED a permanent part of your equipment and should be easily accessible when needed.

A WARRANTY is provided as part of the company's support program for customers who use and maintain their equipment as described in the manual. The warranty is explained on the warranty page located on the inside back cover of this manual.

This warranty provides you the assurance that the company will back its products where defects appear within the warranty period. Should the equipment be abused, or modified to change its performance beyond the factory specifications, the warranty will become void and field improvements may be denied.

NOTE

All information, illustrations, photos, and specifications in this manual are based on the latest information available at the time of publication. The right is reserved to make changes at any time without notice.

Installation Notes

⚠ DANGER

If you must get inside of Distributor, turn **OFF** and **LOCK OUT** all power sources. **DO NOT** operate the Distributor while inside.

⚠ DANGER

Crush Hazard! Lifting lugs are to be used for placement only. **DO NOT** use lifting lugs for structural support. (See Figure 1)

⚠ CAUTION

DO NOT use a clamp band when attaching the down spout to the inlet flange. A bolted connection is required at this point. (See Figure 1.)

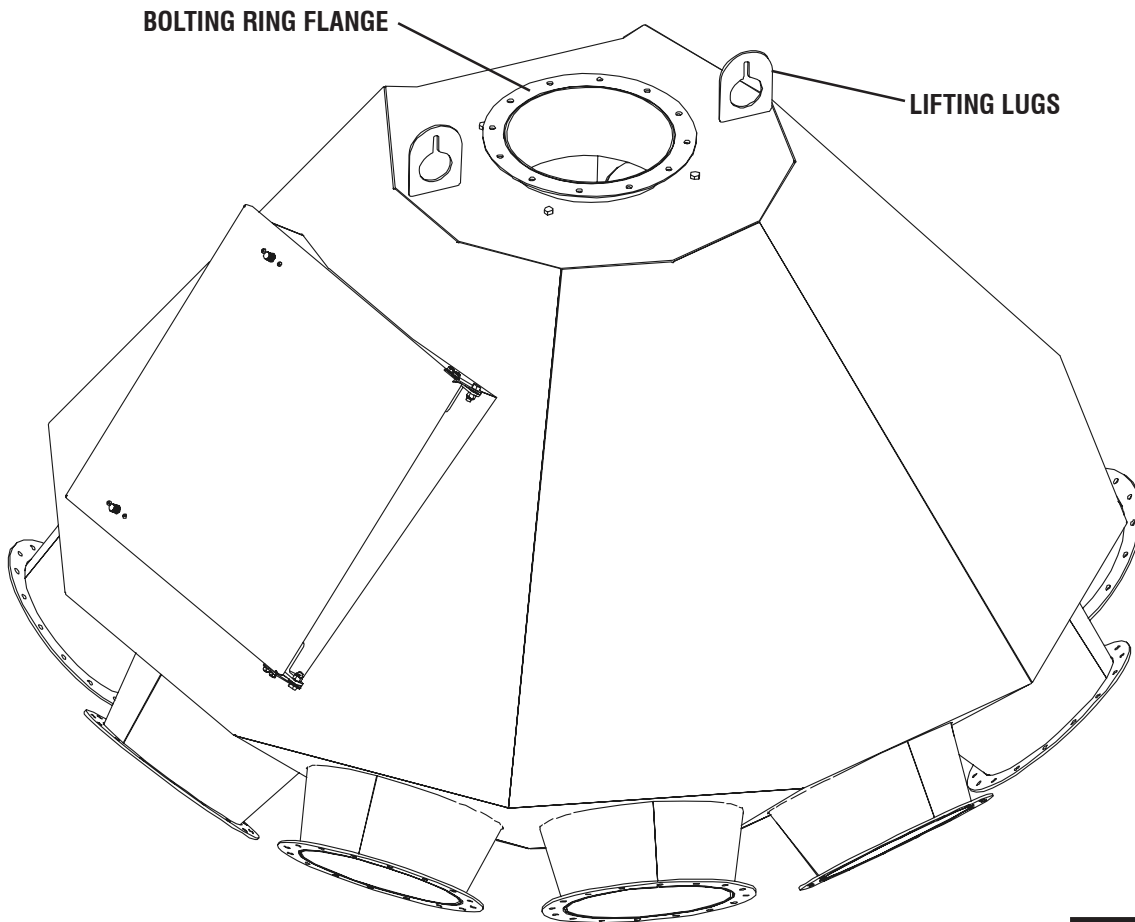


FIGURE 1

Maintenance

REPLACING THE WEAR LINER

Position the spouting near the door. Remove the transition extension tube (See Figure 2) Remove the transition spout (See Figure 2). Reverse the transition box which will allow access to the hardware holding the liner in (See Figure 3). Replace the old liner with the new liner. (See Figure 4) Replace the transition spout and transition extension tube.

Replacement Liner Numbers:

8" - DFB0183, 10" - DFB0051, 12" - DFB0121

GREASING THE BEARING

The bearing is greased at the factory and is ready for operation. Lubricate annually using a No. 2 Lithium based grease or equivalent. (See Figure 2)

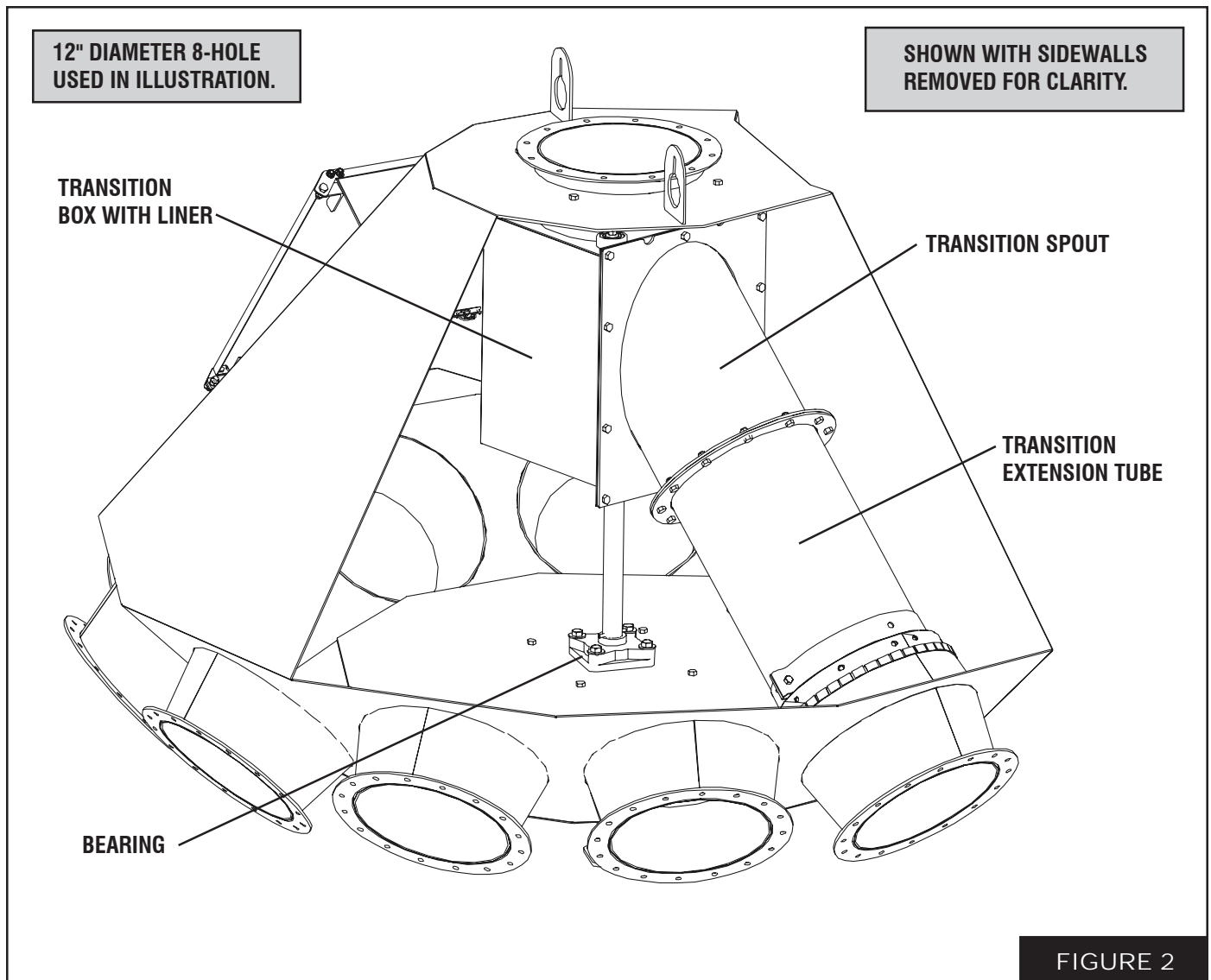


FIGURE 2

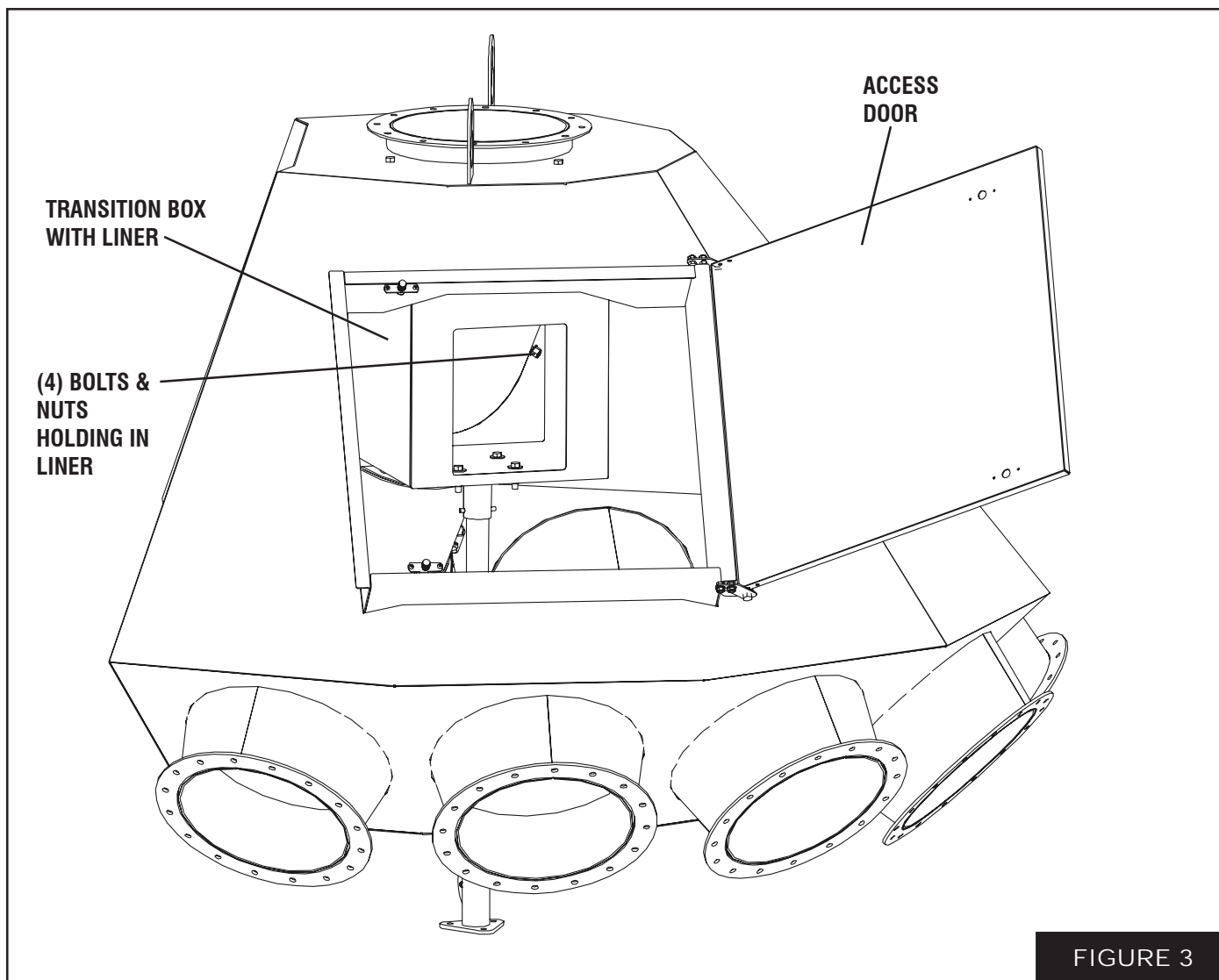


FIGURE 3

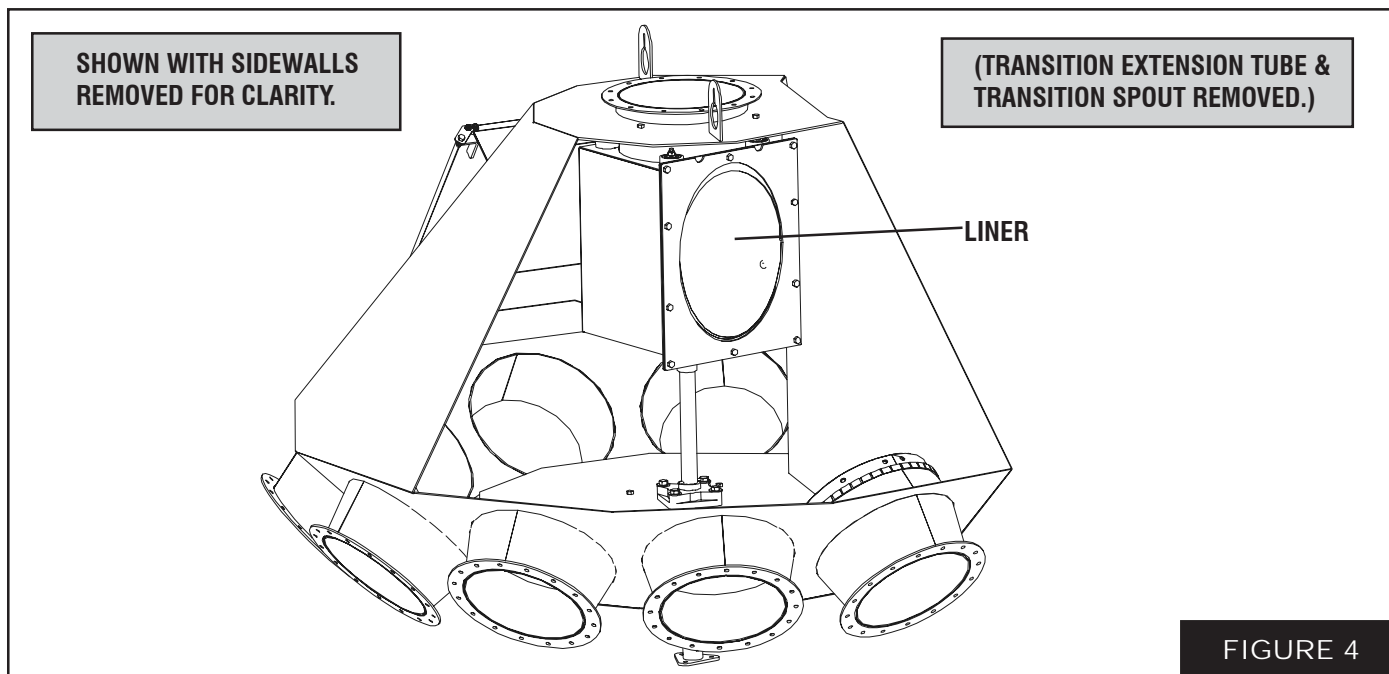


FIGURE 4

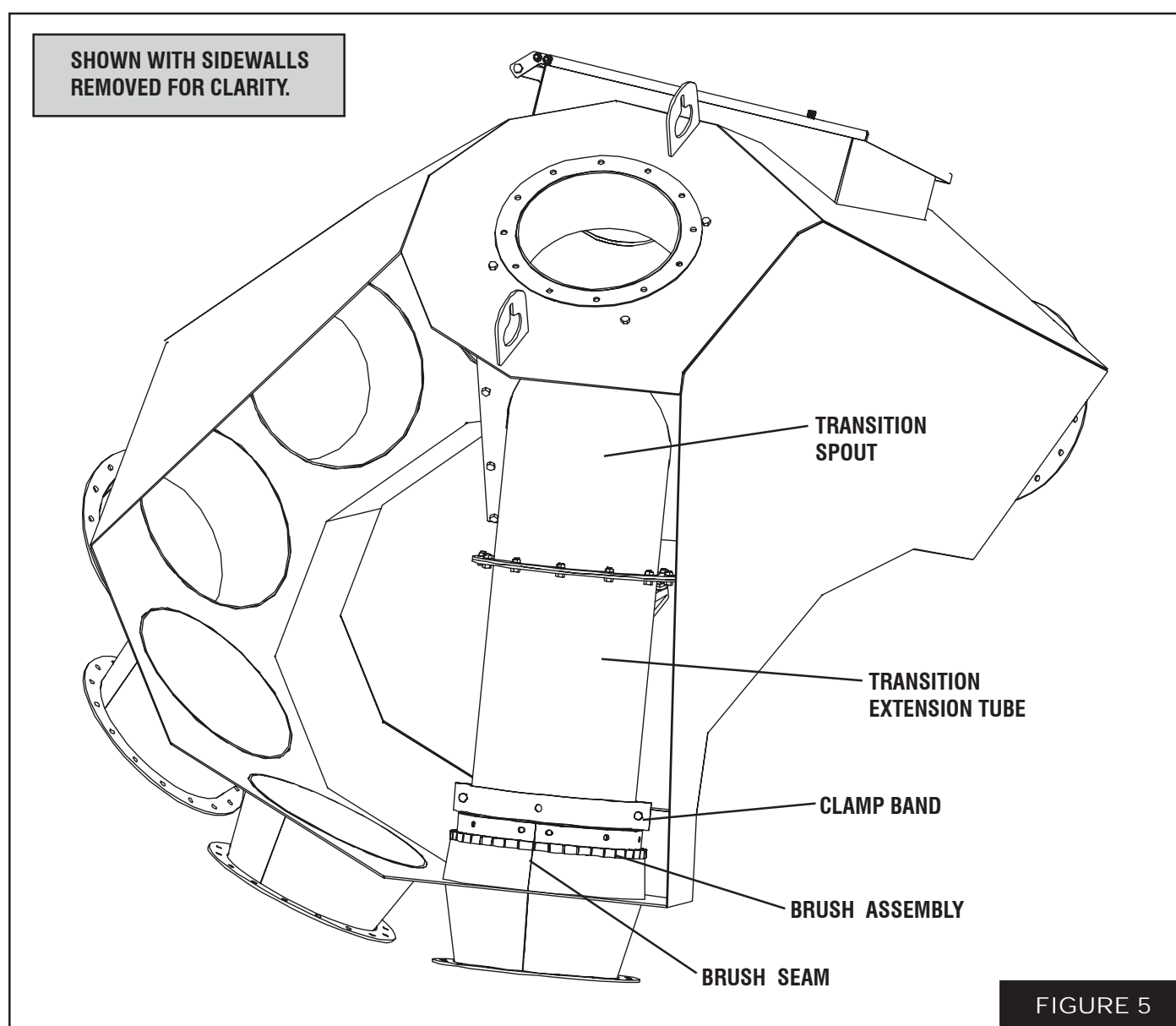
REPLACING THE BRUSH MOUNT ASSEMBLY

Position the spouting near the door. Remove the transition extension tube (See Figure 5). Loosen the clamp band and remove old brush assembly from the transition extension tube. Replace the new brush assembly onto transition extension tube and tighten in place using the clamp band. Replace the transition extension tube/brush assembly.

NOTE: Make sure the seam of the brush assembly is facing towards the top as shown in Fig 5. The brush bristles should be somewhat snug against the spout wall. Operate the spout to all outlets to insure proper alignment and clearance.

Replacement Brush Assembly Numbers:

8" - DFB0189, 10" - DFB0060, 12" - DFB0127

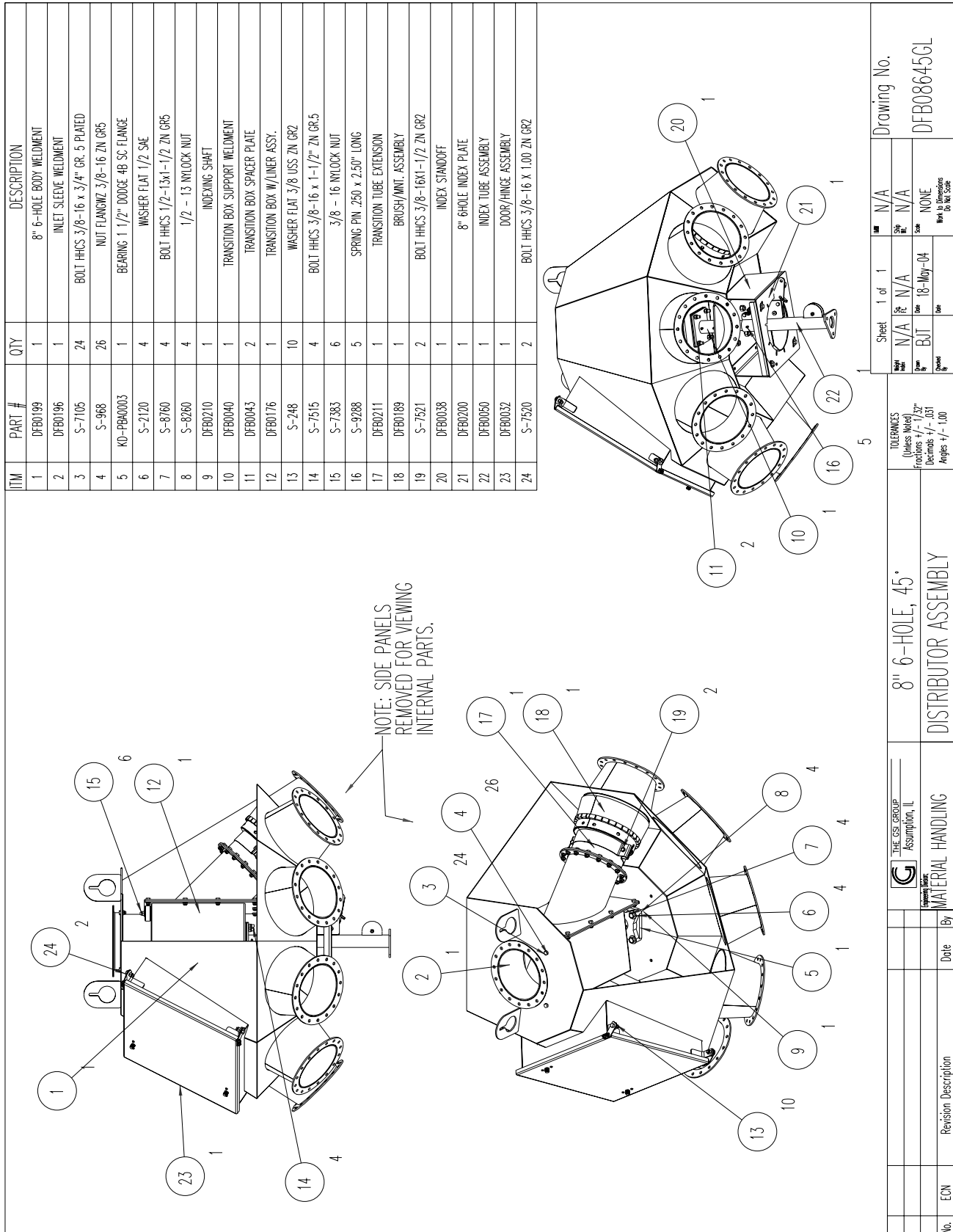


Parts List

PAGE #	PART #	DESCRIPTION
12.	DFB08645GL	- 8" 6 Hole, 45° Distributor Assembly
13.	DFB08845GL	- 8" 8 Hole, 45° Distributor Assembly
14.	DFB081045GL	- 8" 10 Hole, 45° Distributor Assembly
15.	DFB10645GL	- 10" 6 Hole, 45° Distributor Assembly - Drawing A
16.	DFB10645GL	- 10" 6 Hole, 45° Distributor Assembly - Drawing B
17.	DFB10845GL	- 10" 8 Hole, 45° Distributor Assembly
18.	DFB101045GL	- 10" 10 Hole, 45° Distributor Assembly
19.	DFB12445GL	- 12" 4 Hole, 45° Distributor Assembly
20.	DFB12645GL	- 12" 6 Hole, 45° Distributor Assembly
21.	DFB12845GL	- 12" 8 Hole, 45° Distributor Assembly

DFB08645GL

8" Six Hole, 45° Distributor Assembly



Drawing No.

DFB08645GL

Sheet	1 of 1	Rev	N/A	Scale	N/A
Part	N/A	Date	18-May-04	None	None
By	BIT	Drawn		Wrote	Wrote
Check		Special		Wrote	Wrote

TOLERANCES (Unless Noted)	
Fractions +/- 1/32"	
Decimals +/- .001	
Angles +/- 1.00	

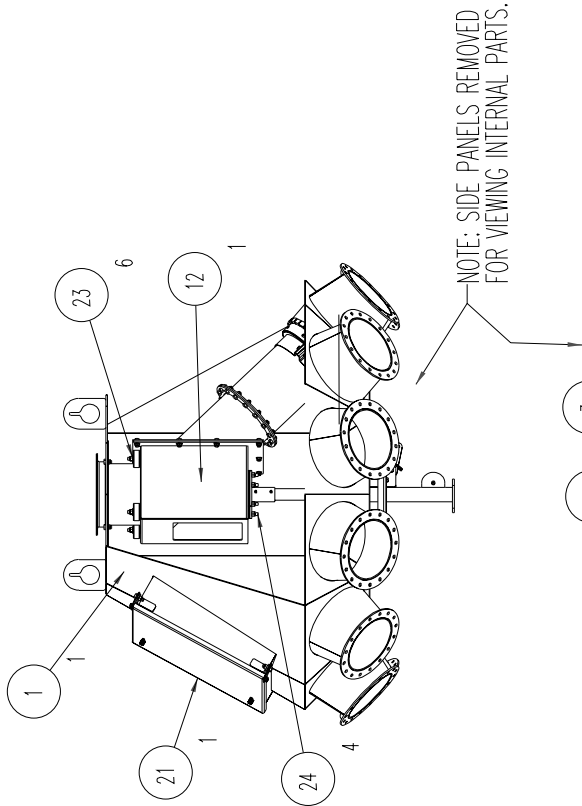
8" 6-HOLE, 45°	
DISTRIBUTOR ASSEMBLY	

THE GSE GROUP	
Assumption, IL	
MATERIAL HANDLING	

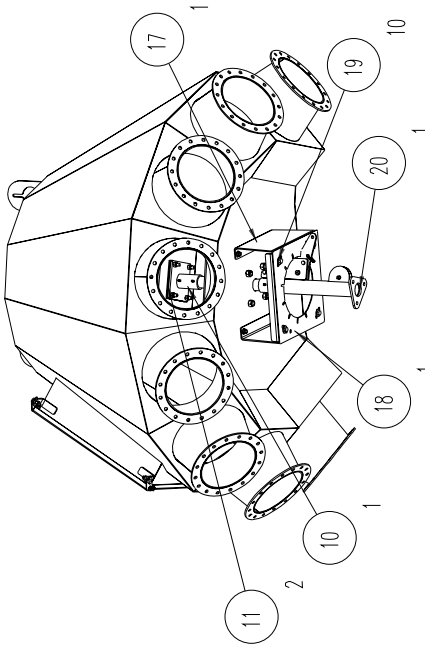
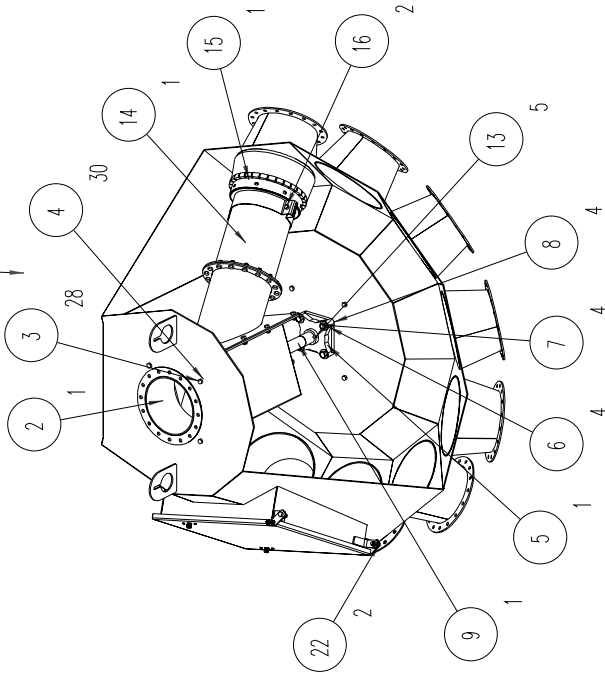
No.	ECN	Revision Description	Date	By
-----	-----	----------------------	------	----

DFB08845GL
8" Eight Hole, 45° Distributor Assembly

ITEM	PART #	QTY	DESCRIPTION
1	DFB0161	1	BODY WELDMENT
2	DFB0196	1	INLET SLEEVE WELDMENT
3	S-7105	28	BOLT HHCS 3/8-16 x 3/4" GR. 5 PLATED
4	S-968	30	NUT FLANGWZ 3/8-16 ZN GR5
5	KD-PBA0003	1	BEARING 1 1/2" DODGE 4B SC FLANGE
6	S-2120	4	WASHER FLAT 1/2 SAE
7	S-8760	4	BOLT HHCS 1/2-13x1-1/2 ZN GR5
8	S-8260	4	1/2 - 13 NYLOCK NUT
9	DFB0175	1	INDEXING SHAFT
10	DFB0040	1	TRANSITION BOX SUPPORT WELDMENT
11	DFB0043	2	TRANSITION BOX SPACER PLATE
12	DFB0176	1	TRANSITION BOX W/LINER ASSY.
13	S-9288	5	SPRING PIN .250 x 2.50" LONG
14	DFB0187	1	TRANSITION TUBE EXTENSION
15	DFB0189	1	BRUSH/AMT. ASSEMBLY
16	S-7521	2	BOLT HHCS 3/8-16x1-1/2 ZN GR2
17	DFB0038	1	INDEX STANDOFF
18	DFB0162	1	INDEX PLATE
19	S-248	10	WASHER FLAT 3/8 USS ZN GR2
20	DFB0050	1	INDEX TUBE ASSEMBLY
21	DFB0032	1	DOOR/HINGE ASSEMBLY
22	S-7520	2	BOLT HHCS 3/8-16 x 1.00 ZN GR2
23	S-7383	6	3/8 - 16 NYLOCK NUT
24	S-7515	4	BOLT HHCS 3/8-16 x 1-1/2" ZN GR.5



NOTE: SIDE PANELS REMOVED
FOR VIEWING INTERNAL PARTS.



--	--	--	--	--	--	--	--	--	--	--	--	--	--	--	--	--	--	--	--	--	--	--	--	--	--	--	--	--	--	--	--	--	--	--	--	--	--	--	--	--	--	--	--	--	--	--	--	--	--	--	--	--	--	--	--	--	--	--	--	--	--	--	--	--	--	--	--	--	--	--	--	--	--	--	--	--	--	--	--	--	--	--	--	--	--	--	--	--	--	--	--	--	--	--	--	--	--	--	--	--	--	--	--	--	--	--	--	--	--	--	--	--	--	--	--	--	--	--	--	--	--	--	--	--	--	--	--	--	--	--	--	--	--	--	--	--	--	--	--	--	--	--	--	--	--	--	--	--	--	--	--	--	--	--	--	--	--	--	--	--	--	--	--	--	--	--	--	--	--	--	--	--	--	--	--	--	--	--	--	--	--	--	--	--	--	--	--	--	--	--	--	--	--	--	--	--	--	--	--	--	--	--	--	--	--	--	--	--	--	--	--	--	--	--	--	--	--	--	--	--	--	--	--	--	--	--	--	--	--	--	--	--	--	--	--	--	--	--	--	--	--	--	--	--	--	--	--	--	--	--	--	--	--	--	--	--	--	--	--	--	--	--	--	--	--	--	--	--	--	--	--	--	--	--	--	--	--	--	--	--	--	--	--	--	--	--	--	--	--	--	--	--	--	--	--	--	--	--	--	--	--	--	--	--	--	--	--	--	--	--	--	--	--	--	--	--	--	--	--	--	--	--	--	--	--	--	--	--	--	--	--	--	--	--	--	--	--	--	--	--	--	--	--	--	--	--	--	--	--	--	--	--	--	--	--	--	--	--	--	--	--	--	--	--	--	--	--	--	--	--	--	--	--	--	--	--	--	--	--	--	--	--	--	--	--	--	--	--	--	--	--	--	--	--	--	--	--	--	--	--	--	--	--	--	--	--	--	--	--	--	--	--	--	--	--	--	--	--	--	--	--	--	--	--	--	--	--	--	--	--	--	--	--	--	--	--	--	--	--	--	--	--	--	--	--	--	--	--	--	--	--	--	--	--	--	--	--	--	--	--	--	--	--	--	--	--	--	--	--	--	--	--	--	--	--	--	--	--	--	--	--	--	--	--	--	--	--	--	--	--	--	--	--	--	--	--	--	--	--	--	--	--	--	--	--	--	--	--	--	--	--	--	--	--	--	--	--	--	--	--	--	--	--	--	--	--	--	--	--	--	--	--	--	--	--	--	--	--	--	--	--	--	--	--	--	--	--	--	--	--	--	--	--	--	--	--	--	--	--	--	--	--	--	--	--	--	--	--	--	--	--	--	--	--	--	--	--	--	--	--	--	--	--	--	--	--	--	--	--	--	--	--	--	--	--	--	--	--	--	--	--	--	--	--	--	--	--	--	--	--	--	--	--	--	--	--	--	--	--	--	--	--	--	--	--	--	--	--	--	--	--	--	--	--	--	--	--	--	--	--	--	--	--	--	--	--	--	--	--	--	--	--	--	--	--	--	--	--	--	--	--	--	--	--	--	--	--	--	--	--	--	--	--	--	--	--	--	--	--	--	--	--	--	--	--	--	--	--	--	--	--	--	--	--	--	--	--	--	--	--	--	--	--	--	--	--	--	--	--	--	--	--	--	--	--	--	--	--	--	--	--	--	--	--	--	--	--	--	--	--	--	--	--	--	--	--	--	--	--	--	--	--	--	--	--	--	--	--	--	--	--	--	--	--	--	--	--	--	--	--	--	--	--	--	--	--	--	--	--	--	--	--	--	--	--	--	--	--	--	--	--	--	--	--	--	--	--	--	--	--	--	--	--	--	--	--	--	--	--	--	--	--	--	--	--	--	--	--	--	--	--	--	--	--	--	--	--	--	--	--	--	--	--	--	--	--	--	--	--	--	--	--	--	--	--	--	--	--	--	--	--	--	--	--	--	--	--	--	--	--	--	--	--	--	--	--	--	--	--	--	--	--	--	--	--	--	--	--	--	--	--	--	--	--	--	--	--	--	--	--	--	--	--	--	--	--	--	--	--	--	--	--	--	--	--	--	--	--	--	--	--	--	--	--	--	--	--	--	--	--	--	--	--	--	--	--	--	--	--	--	--	--	--	--	--	--	--	--	--	--	--	--	--	--	--	--	--	--	--	--	--	--	--	--	--	--	--	--	--	--	--	--	--	--	--	--	--	--	--	--	--	--	--	--	--	--	--	--	--	--	--	--	--	--	--	--	--	--	--	--	--	--	--	--	--	--	--	--	--	--	--	--	--	--	--	--	--	--	--	--	--	--	--	--	--	--	--	--	--	--	--	--	--	--	--	--	--	--	--	--	--	--	--	--	--	--	--	--	--	--	--	--	--	--	--	--	--	--	--	--	--	--	--	--	--	--	--	--	--	--	--	--	--	--	--	--	--	--	--	--	--	--	--	--	--	--	--	--	--	--	--	--	--	--	--	--	--	--	--	--	--	--	--	--	--	--	--	--	--	--	--	--	--	--	--	--	--	--	--	--	--	--	--	--	--	--	--	--	--	--	--	--	--	--	--	--	--	--	--	--	--	--	--	--	--	--	--	--	--	--	--	--	--	--	--	--	--	--	--	--	--	--	--	--	--	--	--	--	--	--	--	--	--	--	--	--	--	--	--	--	--	--	--	--	--	--	--	--	--	--	--	--	--	--	--	--	--	--	--	--	--	--	--	--	--	--	--	--	--	--	--	--	--	--	--	--	--	--	--	--	--	--	--	--	--	--	--	--	--	--	--	--	--	--	--	--	--	--	--	--	--	--	--	--	--	--	--	--	--	--	--	--	--	--	--	--	--	--	--	--	--	--	--	--	--	--	--	--	--	--	--	--	--	--	--	--	--	--	--	--	--	--	--	--	--	--	--	--	--	--	--	--	--	--	--	--	--	--	--	--	--	--	--	--	--	--	--	--	--	--	--	--	--	--	--	--	--	--	--	--	--	--	--	--	--	--	--	--	--	--	--	--	--	--	--	--	--	--	--	--	--	--	--	--	--	--	--	--	--	--	--	--	--	--	--	--	--	--	--	--	--	--	--	--	--	--	--	--	--	--	--	--	--	--	--	--	--	--	--	--	--	--	--	--	--	--	--	--	--	--	--	--	--	--	--	--	--	--	--	--	--	--	--	--	--	--	--	--	--	--	--	--	--	--	--	--	--	--	--	--	--	--	--	--	--	--	--	--	--	--	--	--	--	--	--	--	--	--	--	--	--	--	--	--	--	--	--	--	--	--	--	--	--	--	--	--	--	--	--	--	--	--	--	--	--	--	--	--	--	--	--	--	--	--	--	--	--	--	--	--	--	--	--	--	--	--	--	--	--	--	--	--	--	--	--	--	--	--	--	--	--	--	--	--	--	--	--	--	--	--	--	--	--	--	--	--	--	--	--	--	--	--	--	--	--	--	--	--	--	--	--	--	--	--	--	--	--	--	--	--	--	--	--	--	--	--	--	--	--	--	--	--	--	--	--	--	--	--	--	--	--	--	--	--	--	--	--	--	--	--	--	--	--	--	--	--	--	--	--	--	--	--	--

DFB081045GL

8" Ten Hole, 45° Distributor Assembly

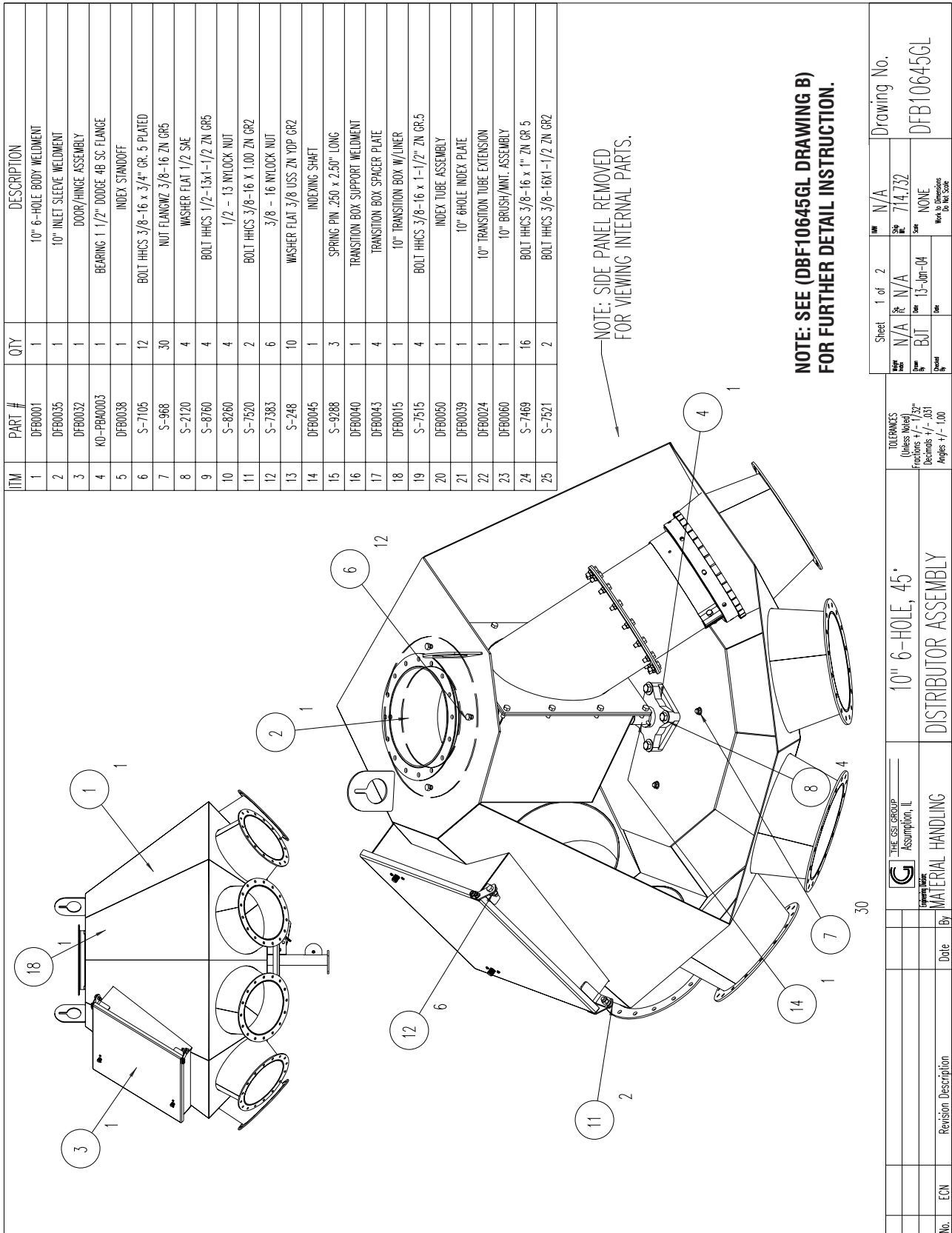
ITEM	PART #	QTY	DESCRIPTION
1	DFB0213	1	BODY WELDMENT
2	DFB0196	1	INLET SLEEVE WELDMENT
3	S-7105	28	BOLT HHCS 3/8-16 x 3/4" GR. 5 PLATED
4	S-968	26	NUT FLANGWZ 3/8-16 ZN GR5
5	KD-PBA0003	1	BEARING 1 1/2" DODGE 4B SC FLANGE
6	S-2120	4	WASHER FLAT 1/2 SAE
7	S-8760	4	BOLT HHCS 1/2-13x1-1/2 ZN GR5
8	S-8260	4	1/2 - 13 NYLOCK NUT
9	DFB0226	1	INDEXING SHAFT
10	DFB0040	1	TRANSITION BOX SUPPORT WELDMENT
11	DFB0043	2	TRANSITION BOX SPACER PLATE
12	DFB0176	1	TRANSITION BOX W/LINER ASSY.
13	S-9288	5	SPRING PIN .250 x 2.50" LONG
14	DFB0227	1	TRANSITION TUBE EXTENSION
15	DFB0189	1	BRUSH/WMT. ASSEMBLY
16	S-7521	2	BOLT HHCS 3/8-16x1-1/2 ZN GR2
17	DFB0038	1	INDEX STANDOFF
18	DFB0082	1	10" 10-HOLE INDEX PLATE
19	S-248	6	WASHER FLAT 3/8 USS ZN GR2
20	DFB0050	1	INDEX TUBE ASSEMBLY
21	DFB0032	1	DOOR/HINGE ASSEMBLY
22	S-7520	2	BOLT HHCS 3/8-16 x 1.00 ZN GR2
23	S-7383	6	3/8 - 16 NYLOCK NUT
24	S-7515	4	BOLT HHCS 3/8-16 x 1-1/2" ZN GR.5

NOTE: SIDE PANELS REMOVED FOR VIEWING INTERNAL PARTS.

Sheet 1 of 1		Drawing No.	
Part	Rev	Part	Rev
N/A	N/A	N/A	N/A
By	Date	By	Date
BJT	24-May-04		
Check		Check	
By		By	

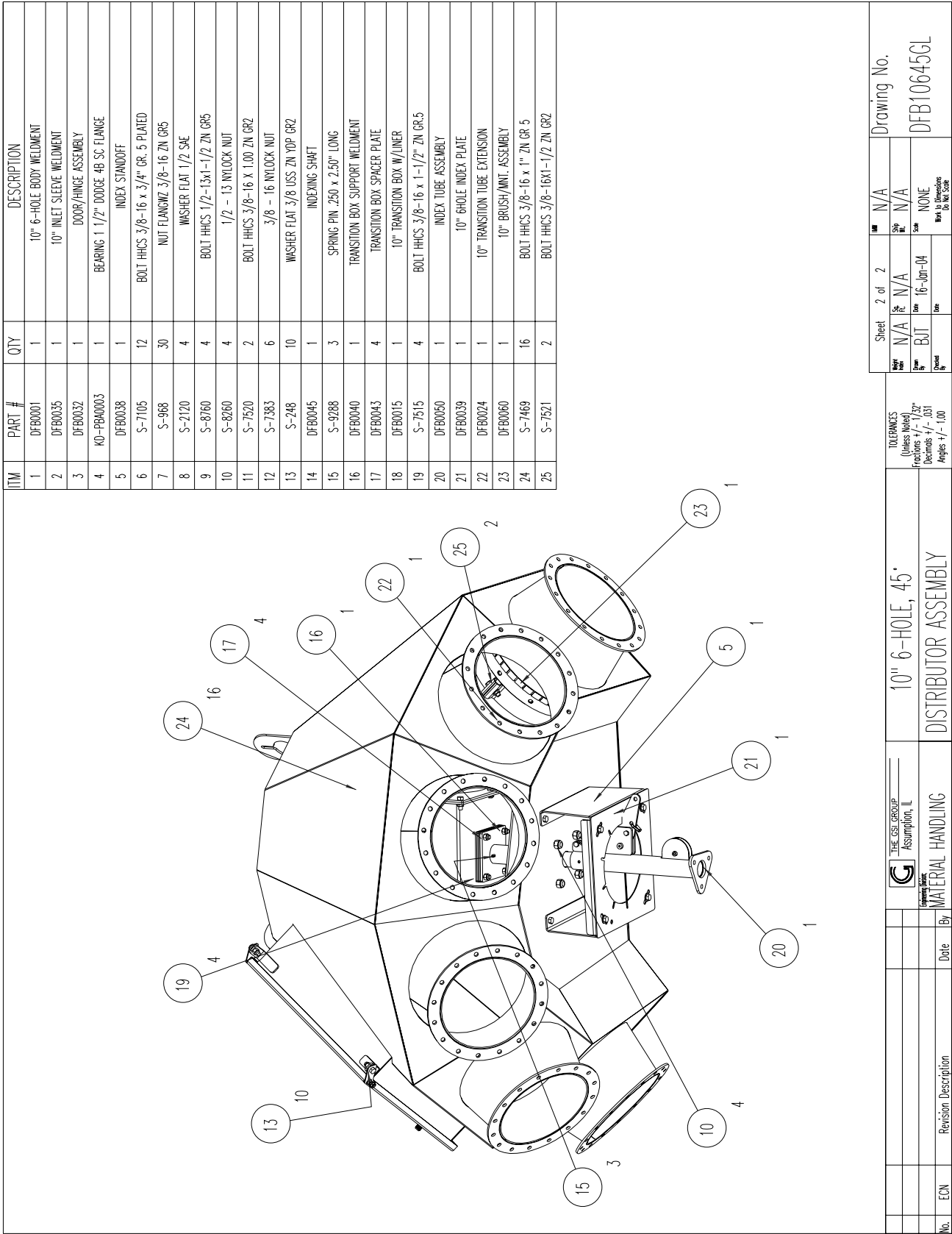
TOLERANCES (Unless Noted) Fractions +/- 1/32 Decimals +/- .001 Angles +/- 1.00		8" 10-HOLE, 45° DISTRIBUTOR ASSEMBLY	
THE GSE GROUP Assumption, IL		MATERIAL HANDLING	
No.	ECN	Revision Description	Date

DFB10645GL
10" Six Hole, 45° Distributor Assembly - Drawing A



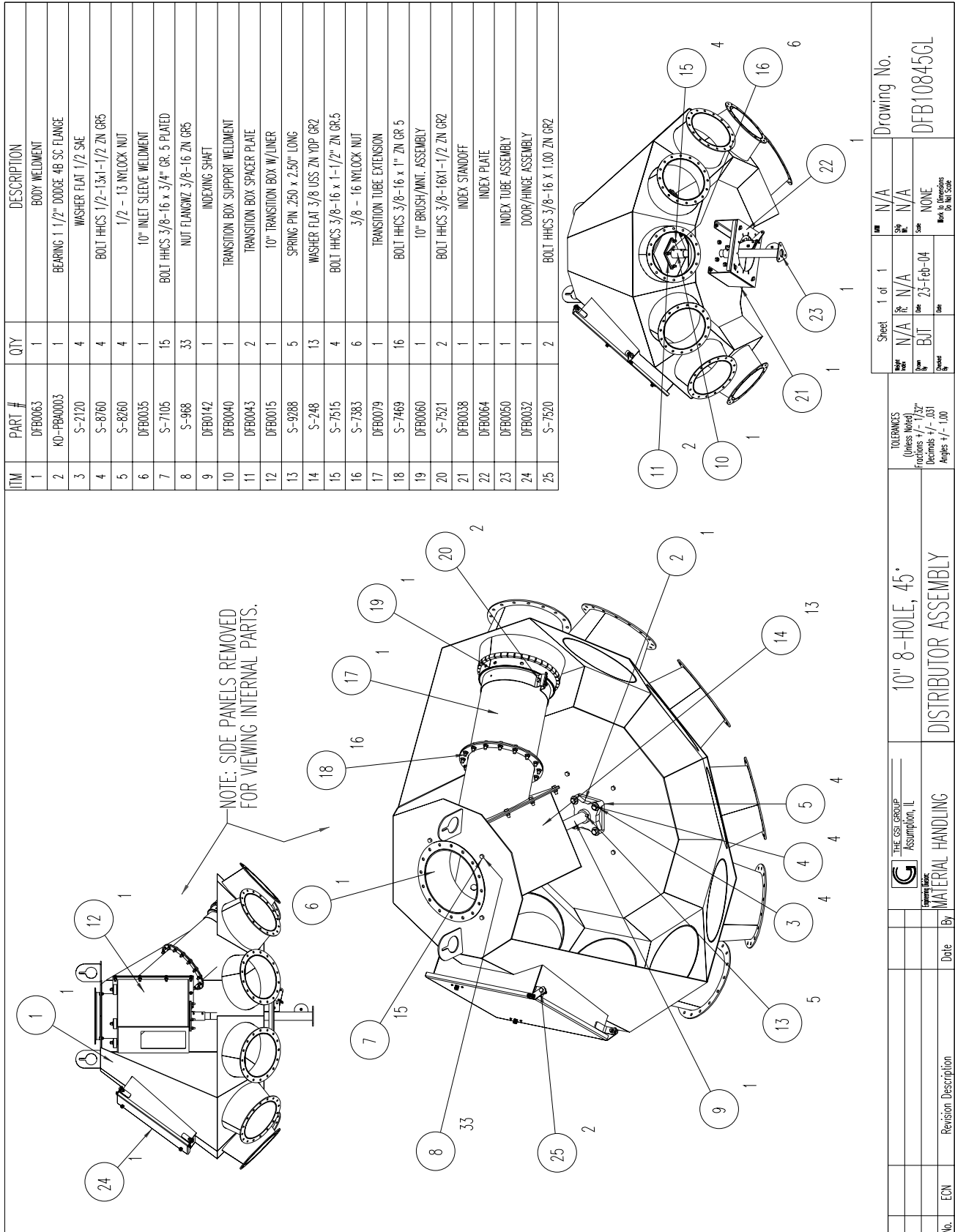
DFB10645GL

10" Six Hole, 45° Distributor Assembly - Drawing B



DFB10845GL

10" Eight Hole, 45° Distributor Assembly



DFB101045GL
10" Ten Hole, 45° Distributor Assembly

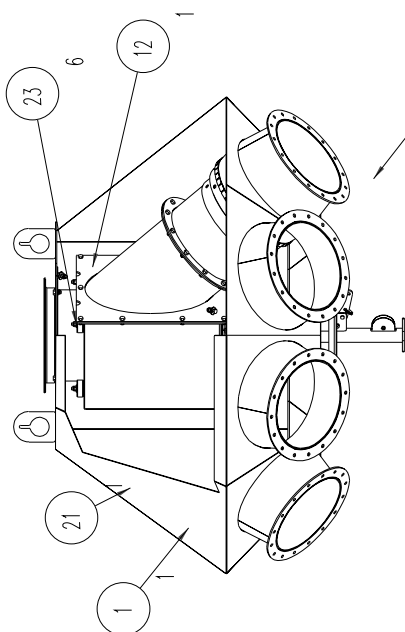
ITEM	PART #	QTY	DESCRIPTION
1	DFB0143	1	BODY WELDMENT
2	KO-PBA0003	1	BEARING 1 1/2" DODGE 4B SC FLANGE
3	S-2120	4	WASHER FLAT 1/2 SAE
4	S-8760	4	BOLT HHCS 1/2-13x1-1/2 ZN GR5
5	S-8260	4	1/2 - 13 NYLOCK NUT
6	DFB0035	1	10" INLET SLEEVE WELDMENT
7	S-7105	28	BOLT HHCS 3/8-16 x 3/4" GR. 5 PLATED
8	S-968	30	NUT FLANGWZ 3/8-16 ZN GR5
9	DFB0144	1	INDEXING SHAFT
10	DFB0040	1	TRANSITION BOX SUPPORT WELDMENT
11	DFB0043	2	TRANSITION BOX SPACER PLATE
12	S-9288	5	SPRING PIN .250 x 2.50" LONG
13	DFB0015	1	10" TRANSITION BOX W/LINER
14	S-748	10	WASHER FLAT 3/8 USS ZN GR2
15	S-7515	4	BOLT HHCS 3/8-16 x 1-1/2" ZN GR5
16	S-7383	6	3/8 - 16 NYLOCK NUT
17	DFB0093	1	TRANSITION TUBE EXTENSION
18	DFB0060	1	10" BRUSH/MNT ASSEMBLY
19	S-7521	2	BOLT HHCS 3/8-16x1-1/2 ZN GR2
20	DFB0038	1	INDEX STANDOFF
21	DFB0082	1	10" 10-HOLE INDEX PLATE
22	DFB0050	1	INDEX TUBE ASSEMBLY
23	DFB0032	1	DOOR/HINGE ASSEMBLY
24	S-7520	2	BOLT HHCS 3/8-16 x 1.00 ZN GR2

NOTE: SIDE PANELS
REMOVED FOR
VIEWING INTERNAL
PARTS.

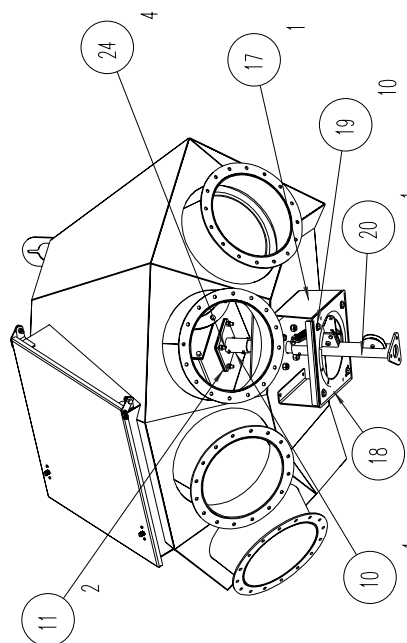
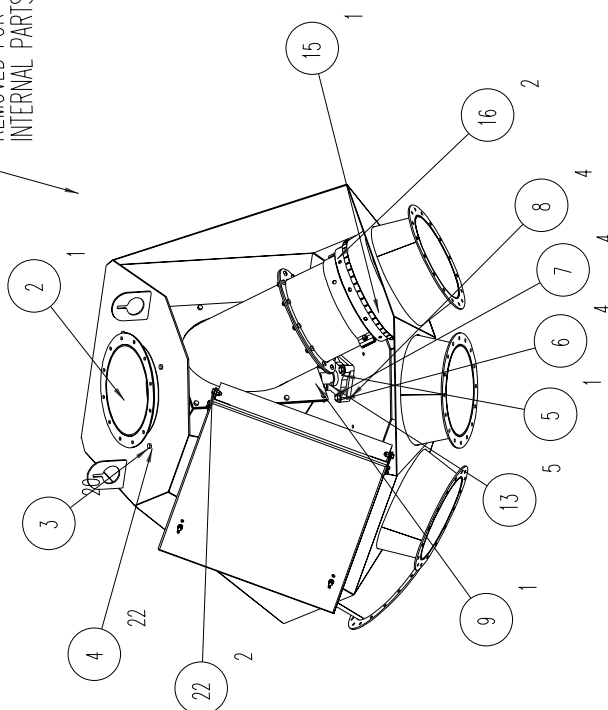
The CST GROUP Assumption, IL		10" 10-HOLE, 45° DISTRIBUTOR ASSEMBLY		Drawing No. DFB101045GL	
MATERIAL HANDLING		Sheet 1 of 1		N/A	
Revision Description		Part N/A		N/A	
Date		Rev. N/A		N/A	
By		Date		N/A	
ECN		Date		N/A	
Revision Description		Date		N/A	
By		Date		N/A	
ECN		Date		N/A	
Revision Description		Date		N/A	
By		Date		N/A	
ECN		Date		N/A	
Revision Description		Date		N/A	
By		Date		N/A	
ECN		Date		N/A	
Revision Description		Date		N/A	
By		Date		N/A	
ECN		Date		N/A	
Revision Description		Date		N/A	
By		Date		N/A	
ECN		Date		N/A	
Revision Description		Date		N/A	
By		Date		N/A	
ECN		Date		N/A	
Revision Description		Date		N/A	
By		Date		N/A	
ECN		Date		N/A	
Revision Description		Date		N/A	
By		Date		N/A	
ECN		Date		N/A	
Revision Description		Date		N/A	
By		Date		N/A	
ECN		Date		N/A	
Revision Description		Date		N/A	
By		Date		N/A	
ECN		Date		N/A	
Revision Description		Date		N/A	
By		Date		N/A	
ECN		Date		N/A	
Revision Description		Date		N/A	
By		Date		N/A	
ECN		Date		N/A	
Revision Description		Date		N/A	
By		Date		N/A	
ECN		Date		N/A	
Revision Description		Date		N/A	
By		Date		N/A	
ECN		Date		N/A	
Revision Description		Date		N/A	
By		Date		N/A	
ECN		Date		N/A	
Revision Description		Date		N/A	
By		Date		N/A	
ECN		Date		N/A	
Revision Description		Date		N/A	
By		Date		N/A	
ECN		Date		N/A	
Revision Description		Date		N/A	
By		Date		N/A	
ECN		Date		N/A	
Revision Description		Date		N/A	
By		Date		N/A	
ECN		Date		N/A	
Revision Description		Date		N/A	
By		Date		N/A	
ECN		Date		N/A	
Revision Description		Date		N/A	
By		Date		N/A	
ECN		Date		N/A	
Revision Description		Date		N/A	
By		Date		N/A	
ECN		Date		N/A	
Revision Description		Date		N/A	
By		Date		N/A	
ECN		Date		N/A	
Revision Description		Date		N/A	
By		Date		N/A	
ECN		Date		N/A	
Revision Description		Date		N/A	
By		Date		N/A	
ECN		Date		N/A	
Revision Description		Date		N/A	
By		Date		N/A	
ECN		Date		N/A	
Revision Description		Date		N/A	
By		Date		N/A	
ECN		Date		N/A	
Revision Description		Date		N/A	
By		Date		N/A	
ECN		Date		N/A	
Revision Description		Date		N/A	
By		Date		N/A	
ECN		Date		N/A	
Revision Description		Date		N/A	
By		Date		N/A	
ECN		Date		N/A	
Revision Description		Date		N/A	
By		Date		N/A	
ECN		Date		N/A	
Revision Description		Date		N/A	
By		Date		N/A	
ECN		Date		N/A	
Revision Description		Date		N/A	
By		Date		N/A	
ECN		Date		N/A	
Revision Description		Date		N/A	
By		Date		N/A	
ECN		Date		N/A	
Revision Description		Date		N/A	
By		Date		N/A	
ECN		Date		N/A	
Revision Description		Date		N/A	
By		Date		N/A	
ECN		Date		N/A	
Revision Description		Date		N/A	
By		Date		N/A	
ECN		Date		N/A	
Revision Description		Date		N/A	
By		Date		N/A	
ECN		Date		N/A	
Revision Description		Date		N/A	
By		Date		N/A	
ECN		Date		N/A	
Revision Description		Date		N/A	
By		Date		N/A	
ECN		Date		N/A	
Revision Description		Date		N/A	
By		Date		N/A	
ECN		Date		N/A	
Revision Description		Date		N/A	
By		Date		N/A	
ECN		Date		N/A	
Revision Description		Date		N/A	
By		Date		N/A	
ECN		Date		N/A	
Revision Description		Date		N/A	
By		Date		N/A	
ECN		Date		N/A	
Revision Description		Date		N/A	
By		Date		N/A	
ECN		Date		N/A	
Revision Description		Date		N/A	
By		Date		N/A	
ECN		Date		N/A	
Revision Description		Date		N/A	
By		Date		N/A	
ECN		Date		N/A	
Revision Description		Date		N/A	
By		Date		N/A	
ECN		Date		N/A	
Revision Description		Date		N/A	
By		Date		N/A	
ECN		Date		N/A	
Revision Description		Date		N/A	
By		Date		N/A	
ECN		Date		N/A	
Revision Description		Date		N/A	
By		Date		N/A	
ECN		Date		N/A	
Revision Description		Date		N/A	
By		Date		N/A	
ECN		Date		N/A	
Revision Description		Date		N/A	
By		Date		N/A	
ECN		Date		N/A	
Revision Description		Date		N/A	
By		Date		N/A	
ECN		Date		N/A	
Revision Description		Date		N/A	
By		Date		N/A	
ECN		Date		N/A	
Revision Description		Date		N/A	
By		Date		N/A	
ECN		Date		N/A	
Revision Description		Date		N/A	
By		Date		N/A	
ECN		Date		N/A	
Revision Description		Date		N/A	
By		Date		N/A	
ECN		Date		N/A	
Revision Description		Date		N/A	
By		Date		N/A	
ECN		Date		N/A	
Revision Description		Date		N/A	
By		Date		N/A	
ECN		Date		N/A	
Revision Description		Date		N/A	
By		Date		N/A	
ECN		Date		N/A	
Revision Description		Date		N/A	
By		Date		N/A	
ECN		Date		N/A	
Revision Description		Date		N/A	
By		Date		N/A	
ECN		Date		N/A	
Revision Description		Date		N/A	
By		Date		N/A	
ECN		Date		N/A	
Revision Description		Date		N/A	
By		Date		N/A	
ECN		Date		N/A	
Revision Description		Date		N/A	
By		Date		N/A	
ECN		Date		N/A	
Revision Description		Date		N/A	
By		Date		N/A	
ECN		Date		N/A	
Revision Description		Date		N/A	
By		Date		N/A	
ECN		Date		N/A	
Revision Description		Date		N/A	
By		Date		N/A	
ECN		Date		N/A	
Revision Description		Date		N/A	
By		Date		N/A	
ECN		Date		N/A	
Revision Description		Date		N/A	
By		Date		N/A	
ECN		Date		N/A	
Revision Description		Date		N/A	
By		Date		N/A	
ECN		Date		N/A	
Revision Description		Date		N/A	
By		Date		N/A	
ECN		Date		N/A	
Revision Description		Date		N/A	
By		Date		N/A	
ECN		Date		N/A	
Revision Description		Date		N/A	
By		Date		N/A	
ECN		Date		N/A	
Revision Description		Date		N/A	
By		Date		N/A	
ECN		Date		N/A	
Revision Description		Date		N/A	
By		Date		N/A	
ECN		Date		N/A	
Revision Description		Date		N/A	
By		Date		N/A	
ECN		Date		N/A	
Revision Description		Date		N/A	
By		Date		N/A	
ECN		Date		N/A	
Revision Description		Date		N/A	
By		Date		N/A	
ECN		Date		N/A	
Revision Description		Date		N/A	
By		Date		N/A	
ECN		Date		N/A	
Revision Description		Date		N/A	
By		Date		N/A	
ECN		Date		N/A	
Revision Description		Date		N/A	
By		Date		N/A	
ECN		Date		N/A	
Revision Description		Date		N/A	
By		Date		N/A	
ECN		Date		N/A	
Revision Description		Date		N/A	
By		Date		N/A	
ECN		Date		N/A	
Revision Description		Date		N/A	
By		Date		N/A	
ECN		Date		N/A	
Revision Description		Date		N/A	
By		Date		N/A	
ECN		Date		N/A	
Revision Description		Date		N/A	
By		Date		N/A	
ECN		Date		N/A	
Revision Description		Date		N/A	
By		Date		N/A	
ECN		Date		N/A	
Revision Description		Date		N/A	
By		Date		N/A	
ECN		Date		N/A	
Revision Description		Date		N/A	
By		Date		N/A	
ECN		Date		N/A	
Revision Description		Date		N/A	
By		Date		N/A	
ECN		Date		N/A	
Revision Description		Date		N/A	
By		Date		N/A	
ECN		Date		N/A	
Revision Description		Date		N/A	
By		Date		N/A	
ECN		Date		N/A	
Revision Description		Date		N/A	
By		Date		N/A	
ECN		Date		N/A	
Revision Description		Date		N/A	
By		Date		N/A	
ECN		Date		N/A	
Revision Description		Date		N/A	
By		Date		N/A	
ECN		Date		N/A	
Revision Description		Date		N/A	
By		Date		N/A	
ECN		Date		N/A	
Revision Description		Date		N/A	
By		Date		N/A	
ECN		Date		N/A	
Revision Description		Date		N/A	
By		Date		N/A	
ECN		Date		N/A	
Revision Description		Date		N/A	
By		Date		N/A	
ECN		Date		N/A	
Revision Description		Date		N/A	
By		Date		N/A	
ECN		Date		N/A	
Revision Description		Date		N/A	
By		Date		N/A	
ECN		Date		N/A	
Revision Description		Date		N/A	
By		Date		N/A	
ECN		Date		N/A	
Revision Description		Date		N/A	
By		Date		N/A	
ECN		Date		N/A	
Revision Description		Date		N/A	
By		Date		N/A	
ECN		Date		N/A	
Revision Description		Date		N/A	
By		Date		N/A	
ECN		Date		N/A	
Revision Description		Date		N/A	
By		Date		N/A	
ECN		Date		N/A	
Revision Description		Date		N/A	
By		Date		N/A	
ECN		Date		N/A	
Revision Description		Date		N/A	
By		Date		N/A	
ECN		Date		N/A	
Revision Description		Date		N/A	

12" Four Hole, 45° Distributor Assembly

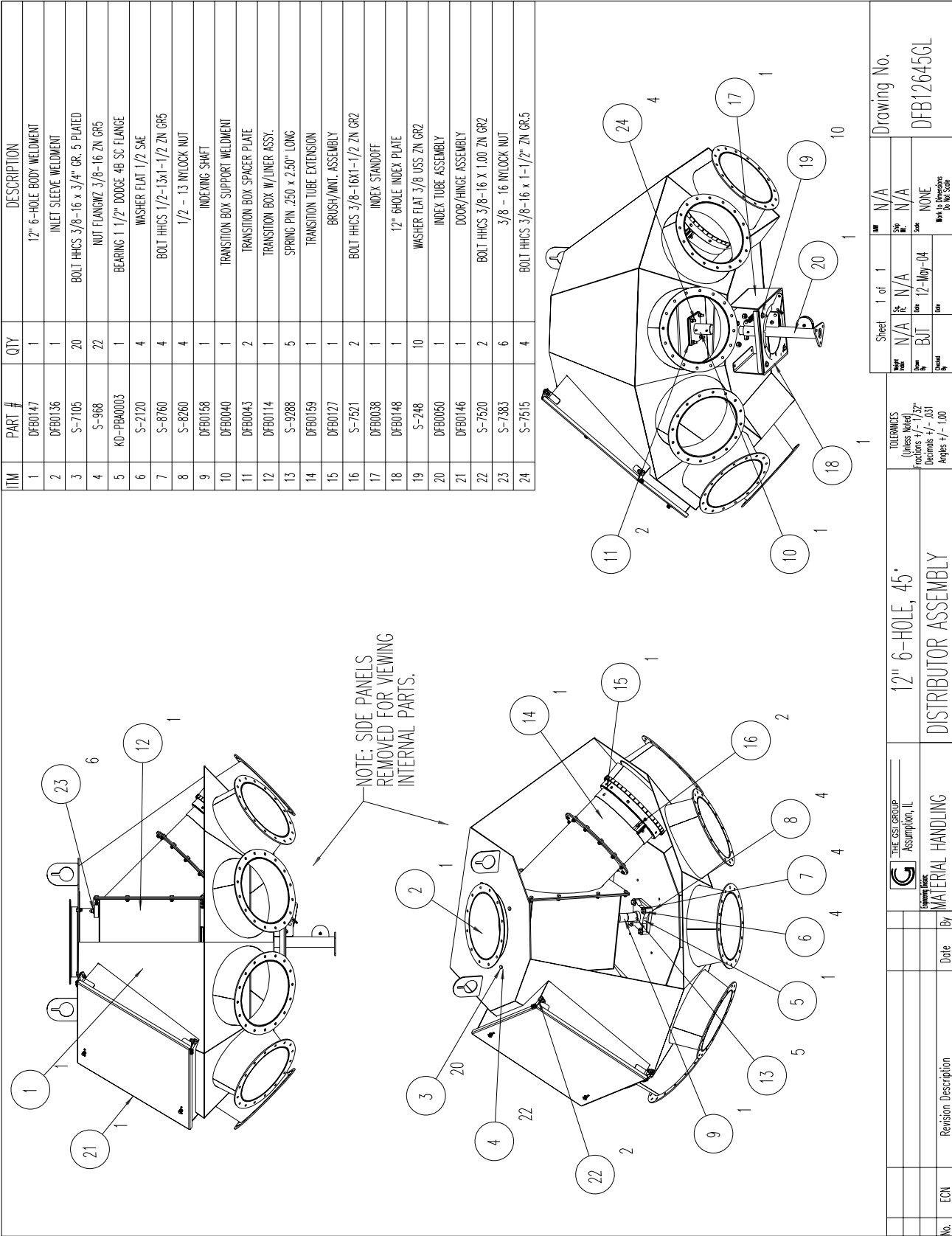
TW	PART #	QTY	DESCRIPTION
1	DFB0230	1	12" 4-HOLE BODY WELDMENT
2	DFB0136	1	INLET SLEEVE WELDMENT
3	S-7105	20	BOLT HHCS 3/8"-16 x 3/4" GR. 5 PLATED
4	S-968	22	NUT FLANGWT 3/8"-16 ZN GR5
5	KD-PBA0003	1	BEARING 1 1/2" DODGE 4B SC FLANGE
6	S-2120	4	WASHER FLAT 1/2 SAE
7	S-8760	4	BOLT HHCS 1/2-13x1-1/2 ZN GR5
8	S-8260	4	1/2 - 13 NYLOCK NUT
9	DFB0158	1	INDEXING SHAFT
10	DFB0040	1	TRANSITION BOX SUPPORT WELDMENT
11	DFB0043	2	TRANSITION BOX SPACER PLATE
12	DFB0114	1	TRANSITION BOX W/LINER ASSY.
13	S-9288	5	SPRING PIN .250 x 2.50" LONG
14	DFB0159	1	TRANSITION TUBE EXTENSION
15	DFB0127	1	BRUSH/MNT. ASSEMBLY
16	S-7521	2	BOLT HHCS 3/8"-16x1-1/2 ZN GR2
17	DFB0038	1	INDEX STANDOFF
18	DFB0231	1	12" 4-HOLE INDEX PLATE
19	S-248	10	WASHER FLAT 3/8 USS ZN GR2
20	DFB0050	1	INDEX TUBE ASSEMBLY
21	DFB0146	1	DOOR/HINGE ASSEMBLY
22	S-7520	2	BOLT HHCS 3/8"-16 x 1.00 ZN GR2
23	S-7383	6	3/8 - 16 NYLOCK NUT
24	S-7515	4	BOLT HHCS 3/8"-16 x 1-1/2" ZN GR5



NOTE: SIDE PANELS
REMOVED FOR VIEWING
INTERNAL PARTS.

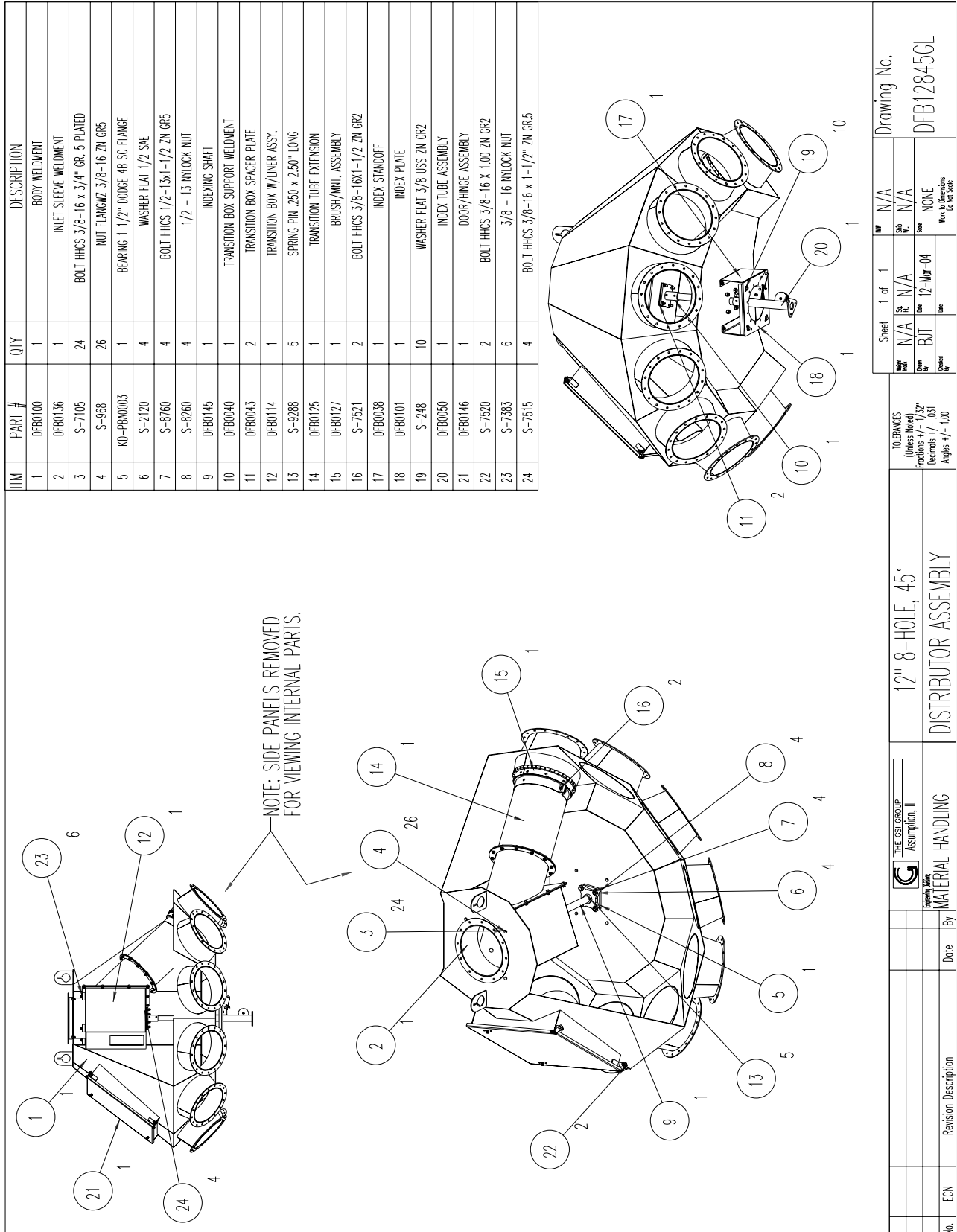
[illegible]

DFB12645GL
12" Six Hole, 45° Distributor Assembly



DFB12845GL

12" Eight Hole, 45° Distributor Assembly



NOTES

WARRANTY

THE COMPANY AS MANUFACTURER WARRANTS ALL PRODUCTS MANUFACTURED BY THE COMPANY. TO BE FREE OF DEFECTS IN MATERIAL AND WORKMANSHIP UNDER NORMAL USAGE AND CONDITIONS FOR A PERIOD OF TWELVE MONTHS AFTER RETAIL SALE TO THE ORIGINAL END USER OF SUCH PRODUCTS. THE COMPANY'S ONLY OBLIGATION IS, AND PURCHASER'S SOLE REMEDY SHALL BE FOR THE COMPANY, TO REPAIR OR REPLACE, AT IT'S OPTION AND EXPENSE, PRODUCTS THAT, IN IT'S SOLE JUDGMENT, CONTAIN A MATERIAL DEFECT DUE TO MATERIALS OR WORKMANSHIP. ALL DELIVERY AND SHIPMENT CHARGES TO AND FROM THE COMPANY'S FACTORY WILL BE PURCHASER'S RESPONSIBILITY. EXPENSES INCURRED BY OR ON BEHALF OF THE PURCHASER WITHOUT PRIOR WRITTEN AUTHORIZATION FROM AN AUTHORIZED EMPLOYEE OF THE COMPANY SHALL BE THE SOLE RESPONSIBILITY OF THE PURCHASER.

EXCEPT FOR THE ABOVE STATED EXPRESS LIMITED WARRANTIES, THE COMPANY MAKES NO WARRANTY OF ANY KIND, EXPRESSED OR IMPLIED, INCLUDING, WITHOUT LIMITATION, WARRANTIES OF MERCHANTABILITY OR FITNESS FOR A PARTICULAR PURPOSE OR USE IN CONNECTION WITH (i) PRODUCT MANUFACTURED OR SOLD BY THE COMPANY OR (ii) ANY ADVICE, INSTRUCTION, RECOMMENDATION OR SUGGESTION PROVIDED BY AN AGENT, REPRESENTATIVE OR EMPLOYEE OF THE COMPANY REGARDING OR RELATED TO THE CONFIGURATION, INSTALLATION, LAYOUT, SUITABILITY FOR A PARTICULAR PURPOSE, OR DESIGN OF SUCH PRODUCT OR PRODUCTS.

IN NO EVENT SHALL THE COMPANY BE LIABLE FOR ANY DIRECT, INDIRECT, INCIDENTAL OR CONSEQUENTIAL DAMAGES, INCLUDING, WITHOUT LIMITATION, LOSS OF ANTICIPATED PROFITS OR BENEFITS. PURCHASER'S SOLE AND EXCLUSIVE REMEDY SHALL BE LIMITED TO THAT STATED ABOVE, WHICH SHALL NOT EXCEED THE AMOUNT PAID FOR THE PRODUCT PURCHASED. THIS WARRANTY IS NOT TRANSFERABLE AND APPLIES ONLY TO THE ORIGINAL PURCHASER. THE COMPANY SHALL HAVE NO OBLIGATION OR RESPONSIBILITY FOR ANY REPRESENTATIVE OR WARRANTIES MADE BY OR ON BEHALF OF ANY DEALER, AGENT OR DISTRIBUTOR OF THE COMPANY.

THE COMPANY ASSUMES NO RESPONSIBILITY FOR FIELD MODIFICATIONS OR ERECTION DEFECTS WHICH CREATE STRUCTURAL OR STORAGE QUALITY PROBLEMS. MODIFICATIONS TO THE PRODUCT NOT SPECIFICALLY COVERED BY THE CONTENTS OF THIS MANUAL WILL NULLIFY ANY PRODUCT WARRANTY THAT MIGHT HAVE BEEN OTHERWISE AVAILABLE.

THE FOREGOING WARRANTY SHALL NOT COVER PRODUCTS OR PARTS WHICH HAVE BEEN DAMAGED BY NEGLIGENT USE, MISUSE, ALTERATION OR ACCIDENT. THIS WARRANTY COVERS ONLY PRODUCTS MANUFACTURED BY THE COMPANY. THIS WARRANTY IS EXCLUSIVE AND IN LIEU OF ALL OTHER WARRANTIES EXPRESS OR IMPLIED. THE COMPANY RESERVES THE RIGHT TO MAKE DESIGN OR SPECIFICATION CHANGES AT ANY TIME.

PRIOR TO INSTALLATION, PURCHASER HAS THE RESPONSIBILITY TO RESEARCH AND COMPLY WITH ALL FEDERAL, STATE AND LOCAL CODES WHICH MAY APPLY TO THE LOCATION AND INSTALLATION.

THE GSI GROUP



1004 E. Illinois St., Box 20
Assumption, IL 62510-0020
Ph: 217-226-4421