

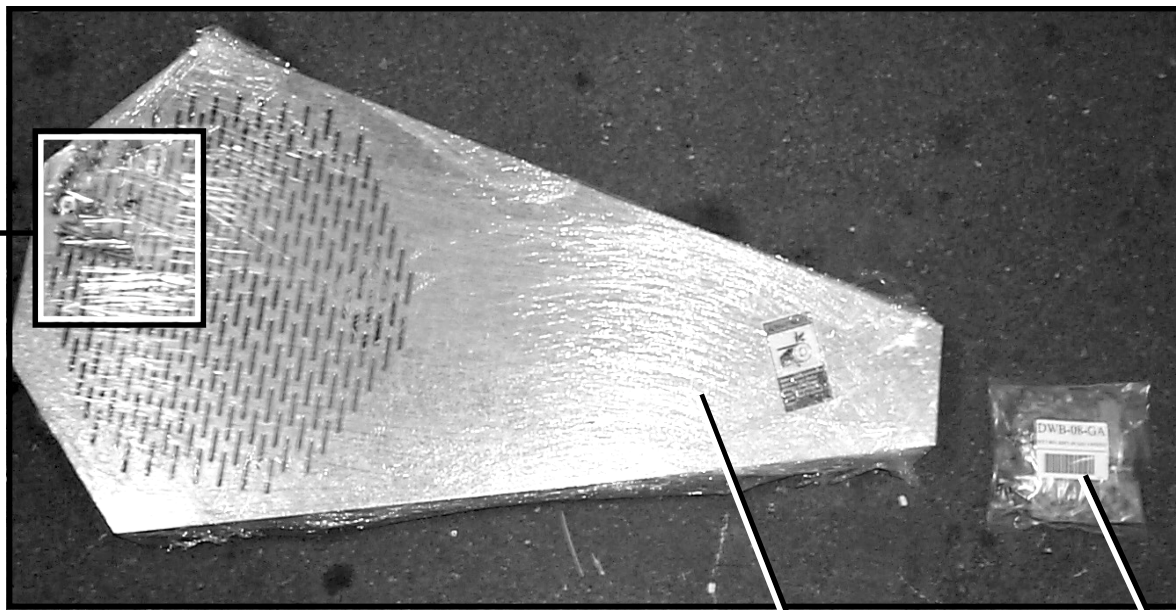
Wet Bin Installation Manual



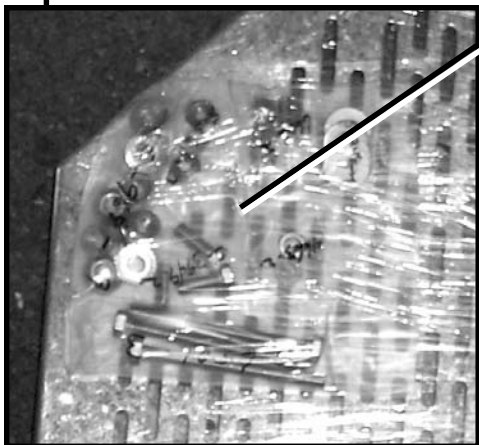
a division of

THE GSI GROUP





④ ③ ② ①



⑤

⑥

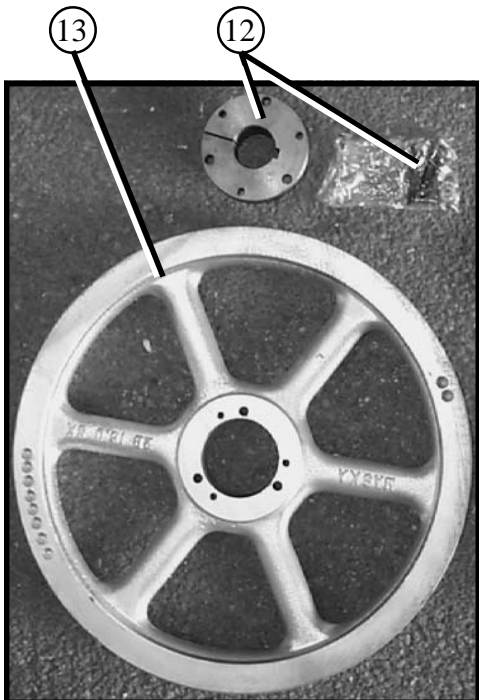
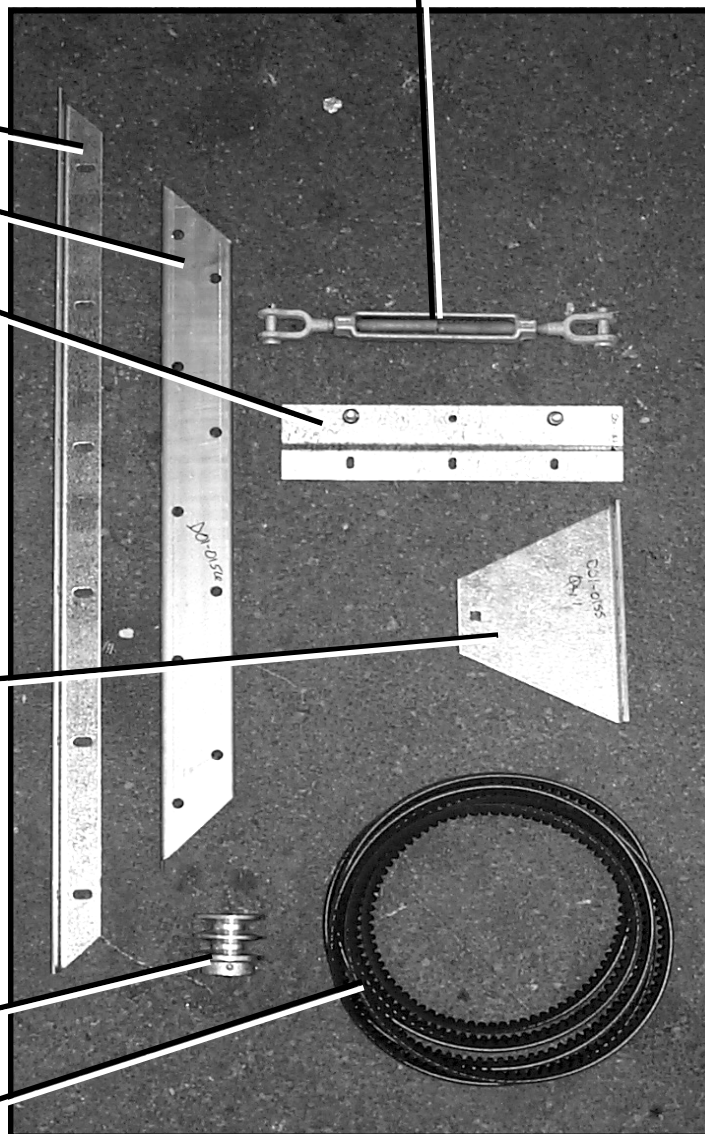
⑦

⑧

⑨

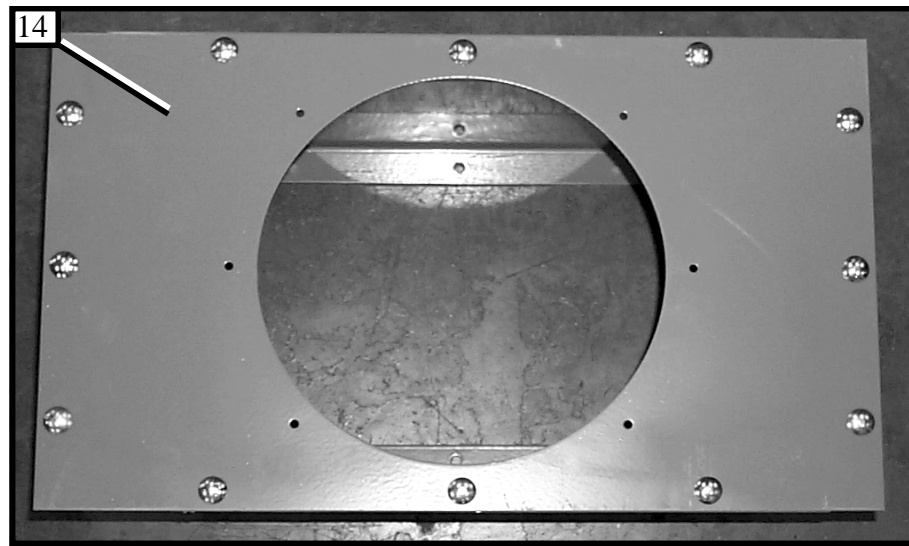
⑩

⑪



⑬

⑫

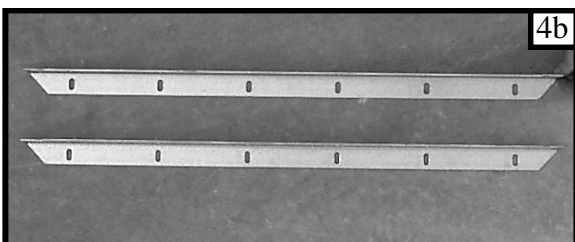
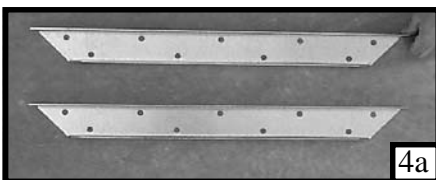
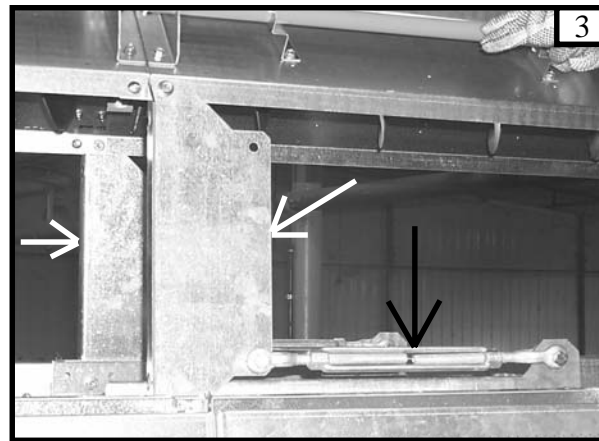
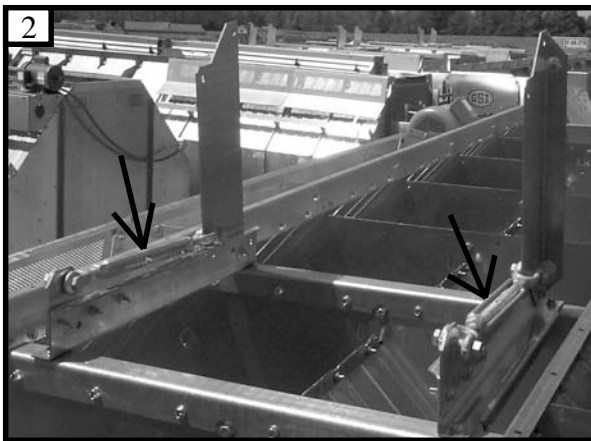
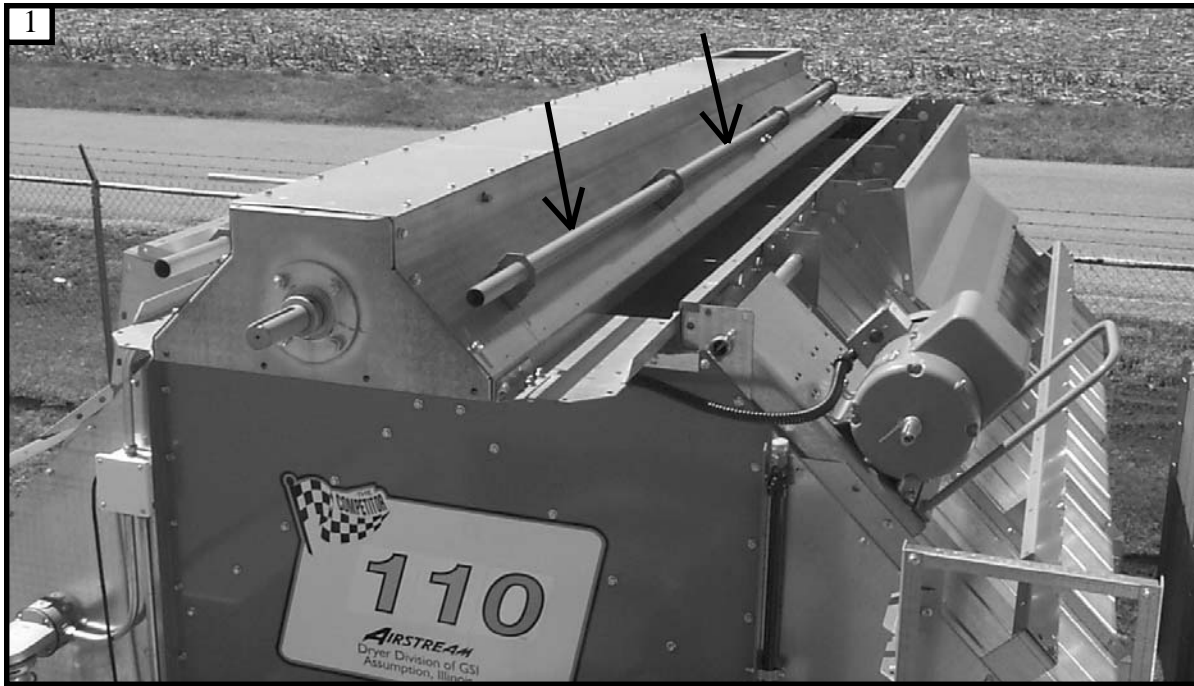


ITEM No.	DESCRIPTION	QTY	PART NUMBER
1	Dryer wet bin hardware package	1	
2	Turnbuckle, 1/2"x6"	1	D01-0465
3&4	Top auger beltguard assembly (includes 3&4 below & hardware in item 5)	1	D01-1182-Y
3	Top auger beltguard cover (not shown)	1	D01-0452-Y
4	Top auger beltguard body	1	D01-0453
5	Beltguard assembly mounting hardware (see the chart at bottom of page)		
6	Top angle bracket, front & rear	2	D01-0044
7	Top auger housing channel	2	D01-0156
8	Wet bin end plate connector	4	D01-1526
9	Beltguard mounting bracket	1	D01-0155
10	Motor shaft sheave	1	depends on model of dryer
11	Belts BX97	2	D01-0464
12	Bushing Q1 - 1 1/2" split taper (for auger shaft sheave and includes hardware)	1	D32-0019
13	Sheave, 16" Gripbelt 2 groove	1	D52-0001
14	Hopper assembly	1	D01-0193-Y

Item 5 hardware summary

PART NUMBER	DESCRIPTION	QTY
S-6501	Bolt, 3/8"-16 x 4"	3
S-968	Nut, flangwz 3/8"-16	9
S-248	Washer, flat 3/8"	4
S-6606	Bolt, flangwz 5/16"-18 X 3/4"	3
S-3611	Nut, flangwz 5/16"-18	3
S-3949	Bolt, 3/8"-16 x 1"	2
S-4663	Nut, locking 3/8"-16	2

WET BIN ASSEMBLY INSTALLATION INSTRUCTIONS



**Important Safety Precautions:**

Dryer has sharp edges.

These sharp edges may cause serious injury.

Use appropriate Personal Protective Equipment.

Use proper lifting techniques.

Photograph 1:

Photo shows the top auger in the “collapsed” position for shipping purposes. This is what your dryer will look like when you receive it.

Photograph 2:

Photo shows the lift kit assembly (top auger removed). The lift kit is used on all dryers that are 12 feet and longer. Note the turnbuckles used to raise the top auger to allow the installation of the wet bin.

Photograph 3:

Photo shows the lift kit assembly (top auger installed) in the raised position.

Photograph 4, 4a, 4b:

Photo 4 shows where to put the top angle bracket (part no. D01-0044) and the top auger housing channel (part no. D01-0156). Photo 4a shows the 2 housing channels (D01-0156). Photo 4b shows the 2 angle brackets (D01-0044).

Step 1:

If you have an 8 ft. or a 10 ft. dryer use the handrails pointed out by the arrows in photo 1 to raise the top auger. If you have a 12 ft. or longer dryer, then turning the turnbuckles on the lift kit raises and lowers the top auger assembly. The arrows in photo 2 & 3 point out the turnbuckles.

Step 2:

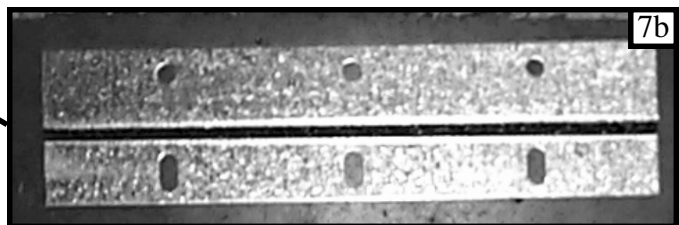
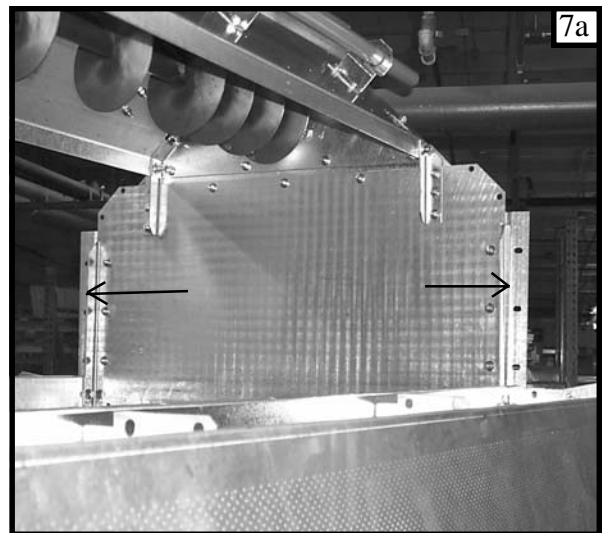
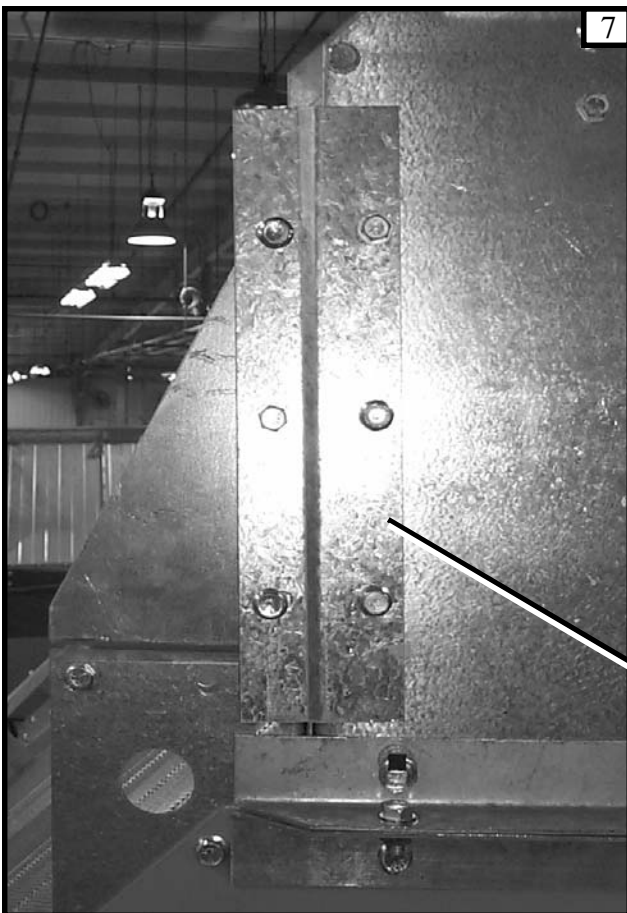
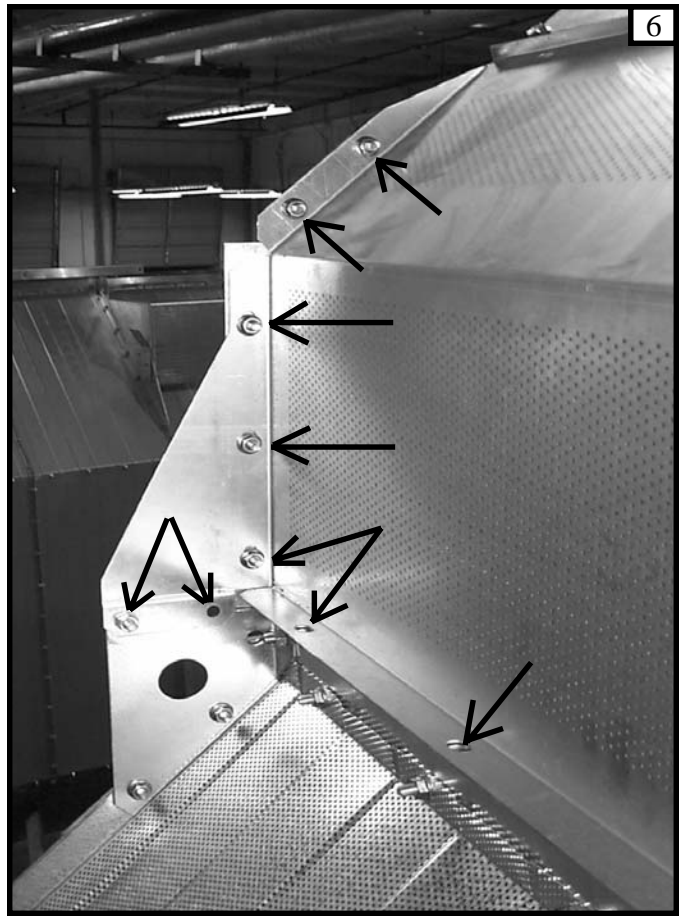
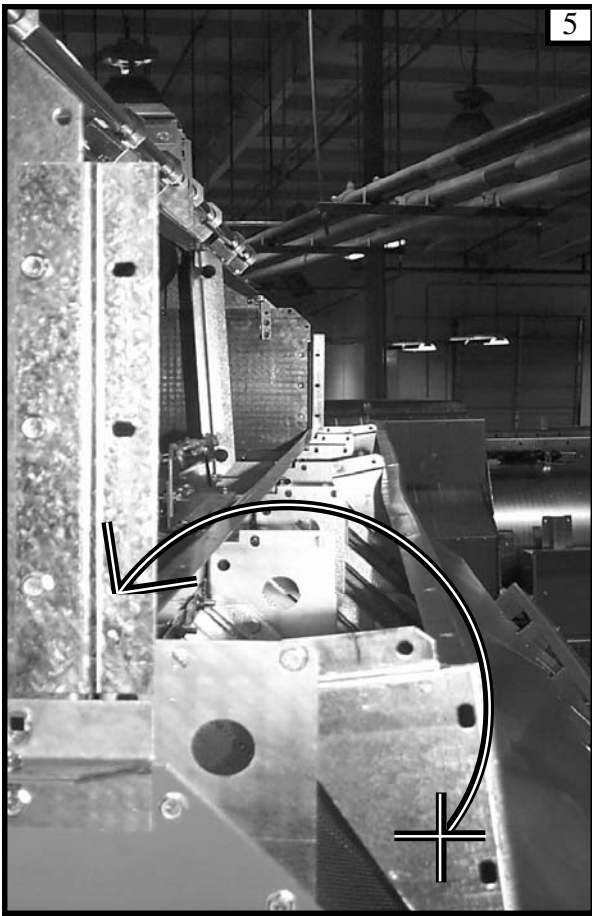
Bolt the angle brackets shown in photo 4b back-to-back to the angle brackets already installed on the dryer in the location shown in photo 4 (one on the front of the dryer and one on the rear).

Step 3:

Bolt the top auger housing channel shown in photo 4a to the wet bin end location shown in photo 4 (one on the front of the dryer and one on the rear).

Step 4:

Un bolt the lift kit legs pointed out in photo 3 (white arrows) from the top auger assembly *after the bolts used to complete steps 2 & 3 are tightened*. Next lower the lift kit legs to the complete lowered position.



**Important Safety Precautions:**

Dryer has sharp edges.
These sharp edges may cause serious injury.
Use appropriate Personal Protective Equipment.
Use proper lifting techniques.

Photograph 5:

Photo shows the top auger assembly raised and the wet bin sides in the lowered position. Note the arrow that illustrates lifting the wet bin sides into place. Disregard the position of the lift kit legs, they had not yet been lowered when this photo was taken.

Photograph 6:

Photo shows the wet bin sides in the up position. The arrows point to some of the bolt hole locations for securing the wet bin sides to the top auger assembly.

Photograph 7, 7a,7b:

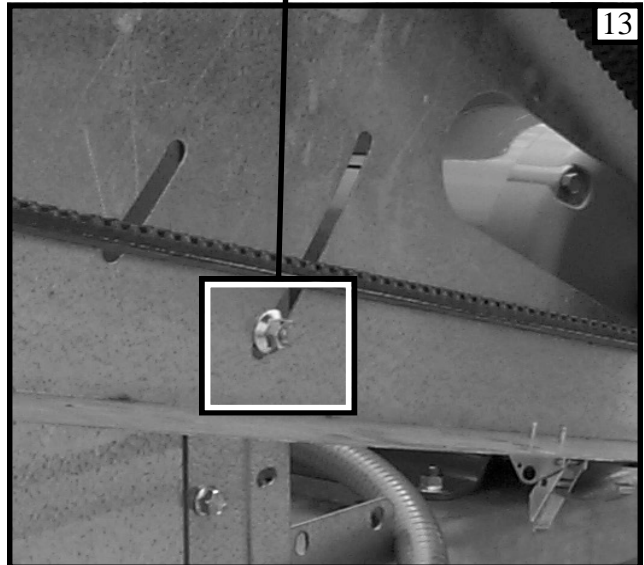
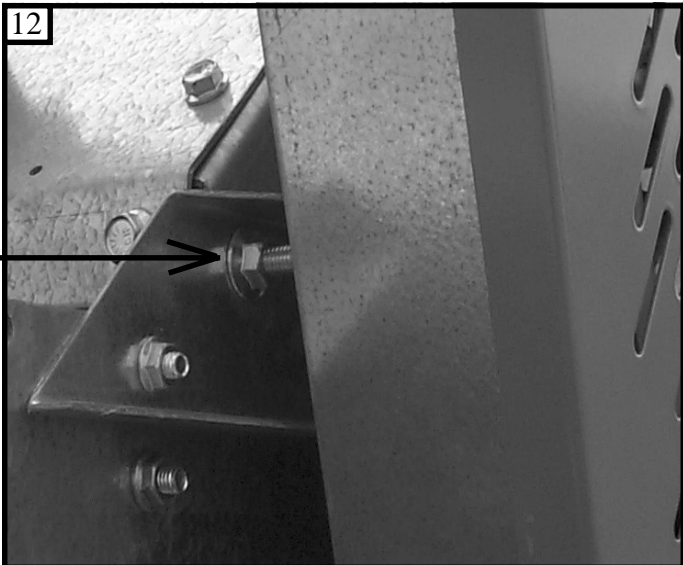
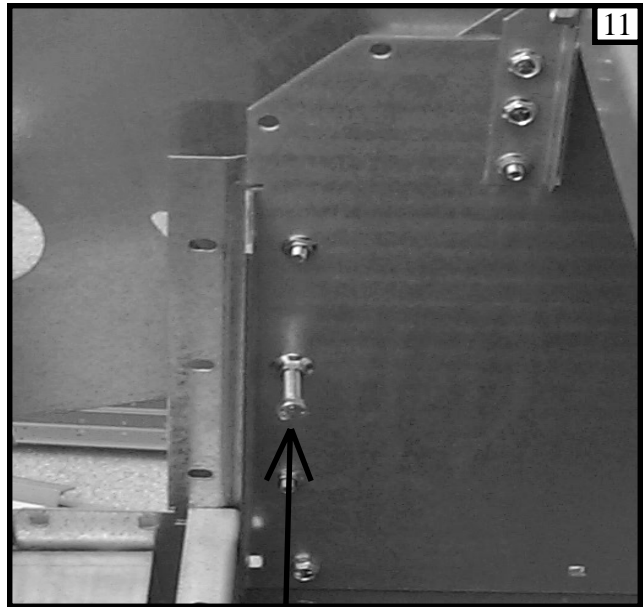
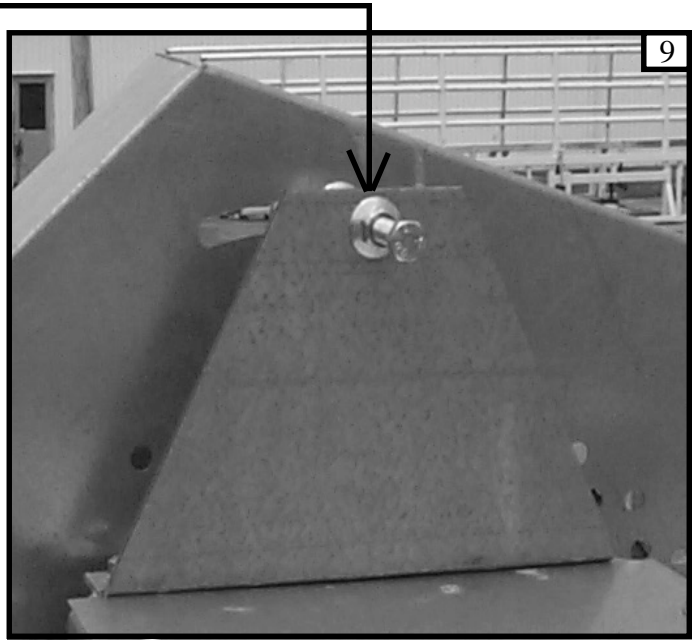
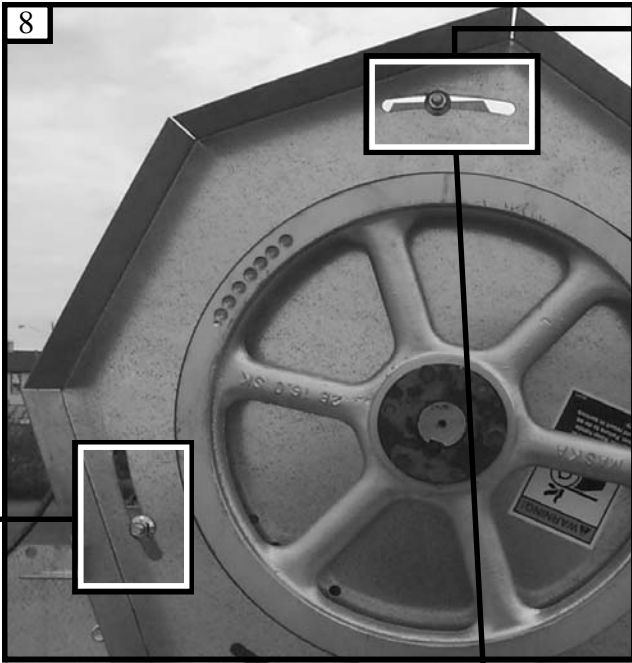
Photo 7 shows the location of the wet bin end plate connectors (part no. D01-1526) shown individually in photo 7b. Photo 7b also shows the location of the wet bin end plate connector (indicated by the arrows) with the wet bin sides lowered.

Step 5:

Shipped with your dryer will be 4 wet bin end plate connectors (photo 7b). Bolt these to the locations shown in photos 7 & 7a at both ends of the dryer.

Step 6:

Raise wet bin sides as illustrated by the arrow in photo 5. Secure wet bin sides with hardware provided as shown by photo 6. (Note: Leave the wet bin side adjacent to top auger motor off for the time being.)



**Important Safety Precautions:**

Dryer has sharp edges.
These sharp edges may cause serious injury.
Use appropriate Personal Protective Equipment.
Use proper lifting techniques.

Photograph 8:

Photo shows the location of 2 of the three bolts that attach the top auger belt guard body to the top auger & wet bin assembly.

Photograph 9:

Photo shows the location of the belt guard mounting bracket.

Photograph 10:

Photo is a side view of photo 9. Note the placement of the nuts on the bolt.

Photograph 11:

Photo shows the location of the third bolt used to attach the belt guard body to the top auger and wet bin assembly. (Note: this is the reason for not installing the wet bin side not installed in step 6.)

Photograph 12:

Photo shows where to place the bolt (shown in the lower square of photo 8). This is the upper left hole of the top auger housing channel shown in photo 4 and 4a on page 2.

Photograph 13:

Photo shows the location of the third bolt used to attach the belt guard body pointed out in photo 11.

Step 7:

Install the belt guard mounting bracket shown in photos 9 & 10.

Step 8:

Lift the load motor and install 1/2" x 6" turnbuckle to the motor mount (part no. D01-0173) and motor mount anchor bracket (part no. D01-0170) with 2 turnbuckle pins and 2 cotter pins (see photo 15 on page 8).

Step 9:

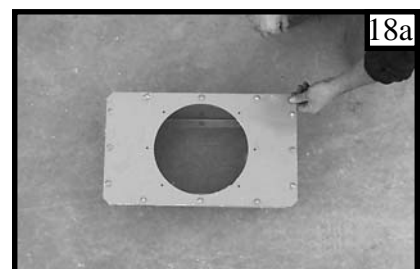
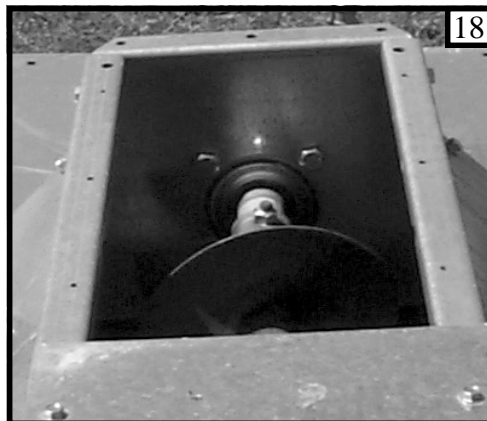
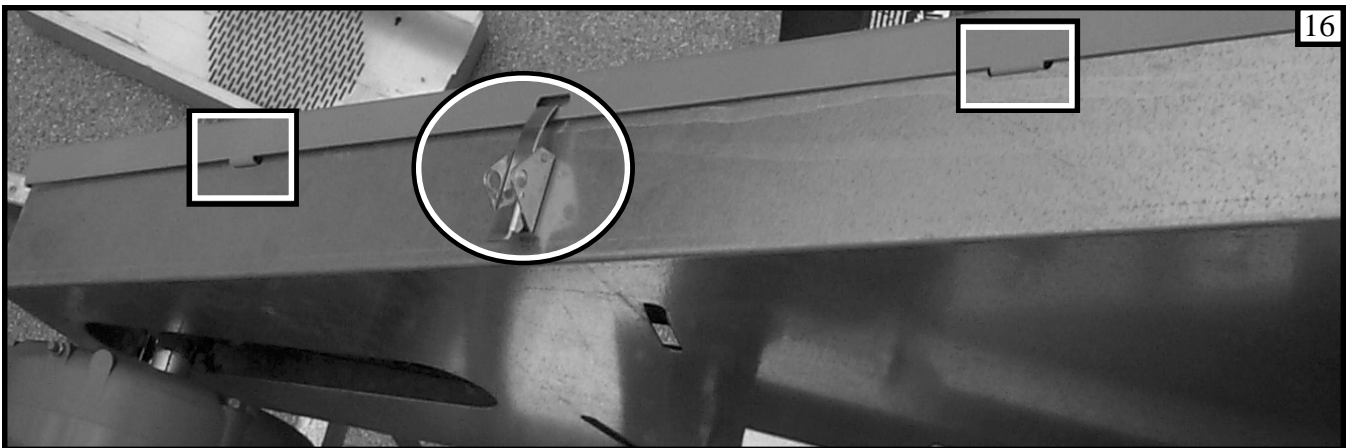
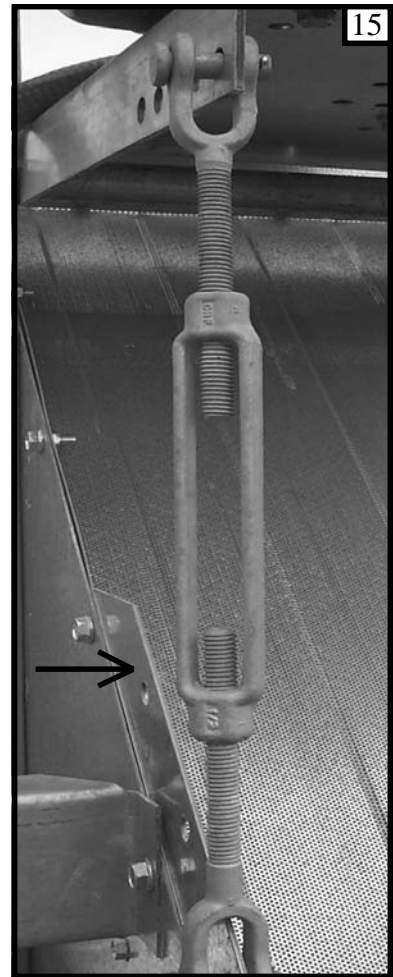
Install bolts for belt guard body in the locations shown in photos 10, 11, & 12.

Step 10:

Place and secure the belt guard body to the bolts installed in step 8 (centering cutout on load motor drive shaft). Tighten the nuts just enough to hold belt guard body on. Adjustment for clearance will be performed in a later step.

Step 11:

Making sure the key is in the keyway, place 16" sheave (part no. D52-0001) on auger drive shaft. Insert 1 1/2" split tapered Q1 bushing on auger drive shaft and seat the bushing with a wooden, or non-metal mallet. Install 3 bolts in bushing. If necessary smooth the top auger drive shaft with hardware cloth.



**Important Safety Precautions:**

Dryer has sharp edges.
These sharp edges may cause serious injury.
Use appropriate Personal Protective Equipment.
Use proper lifting techniques.

Photograph 14:

Photo shows the motor sheave. Note that the motor shaft is centered vertically in the cutout.

Photograph 15:

Photo shows the turnbuckle used to adjust the belt tension. Note the arrow pointing to the motor mount anchor bracket.

Photograph 16:

Photo shows the belt guard cover attached to the belt guard body (viewed from top looking down). Note the latch (circled), part no. FH-4429-1 (one on top two on bottom of belt guard body). Also note the tabs (on belt guard cover) and slots (on belt guard body) in the squares.

Photograph 17:

Photo shows the belt guard cover installed and load motor in the raised position.

Photograph 18, 18a:

These two photos show the hopper assembly (18a) and the location on the top auger assembly (18) to install it.

Step 12:

Make sure the key is in the keyway, then slide motor drive sheave on load motor drive shaft. Then set the setscrew.

Step 13:

Thread the 2 BX97 belts from motor drive pulley to 16" sheave. Check the alignment of the belts and sheaves to be sure that they are in line. To tighten belts, turn turnbuckle shown in photo 15.

Step 14:

Now adjust the clearance of the belt guard body so that there is no contact with any moving parts and tighten adjustment hardware.

Step 15:

In this step refer to photo 16. To install the belt guard cover first insert tabs on the belt guard cover into the slots on the belt guard body (as shown in the squares drawn on photo 16). Then engage the latches one on top (circled) and two on the bottom.

Step 16:

Now install the wet bin side adjacent to the load motor that was not installed in step 6.

Step 17:

Install hopper assembly (part no. D01-0193, shown in photo 18a) over the grain intake opening at the top rear of the dryer with the following hardware; 6 ea. of 1/4"-20X5/8" self-drilling screws (S-6497), 5 ea. 5/16"X3/4" whiz bolts (S-6606), 5 ea. 5/16" whiz nuts (S-3611).

