

NOISE SUPPRESSER ASSEMBLY INSTRUCTIONS

PNEG-382



PNEG-382

General

The *NOISE SUPPRESSOR PACKAGE* has been designed to reduce the noise levels produced by the fans by mounting over the front of the dryer unit.

Support Framework

The *SUPPORT FRAMEWORK* is attached to the fan support in three places. Some drilling will be required in the fan support. Refer to Figure 4 for an exploded view of the assembly.

NOTE: Unless otherwise noted, use the 5/16" WHIZ NUTS AND BOLTS included in the hardware package to complete all assemblies.

1. Install the *FAN SUPPORT "C" CHANNEL (D01-0720)* to each side of the fan support in the line of holes at the top of the panel. Use the *5/16" WHIZ NUTS AND BOLTS* included in the hardware package to attach these channels. Attach one *FRONT/BACK FRAME "C" CHANNEL (D01-0719)* to the top holes in the *FAN SUPPORT "C" CHANNELS*.
2. Drill (1) - 3/8" diameter hole in the locations specified by FIGURE 1, 2, OR 3 depending dryer model. These holes are used to mount the framework to the fan support.
3. Attach the *CENTER BACK FRAME "C" CHANNEL (D01-0738)* to each side of the fan support at the center fan.
4. Attach (1) - *FRONT/BACK FRAME "C" CHANNEL (D01-0719)* to the bottom of the fan support at the group of 3/8" holes drilled in step 2.
5. Bolt the *SIDE FRAME "C" CHANNELS (D01-0718)* and the *FRONT/BACK FRAME "C" CHANNEL (D01-0719)* that form the rest of the *SUPPORT FRAMEWORK* to the pieces already attached to the dryer. The *SIDE FRAME "C" CHANNELS* have two sets of holes on the flanges at each end. Use holes nearest the middle so that at the back of the unit these channels will stick out 5.00" TYPICAL beyond the *BACK FRAME "C" CHANNELS*.

6. Install the *LOWER BRACE ANGLE* -(D01-0722) to the bottom *FRONT FRAME ANGLE* and to the top holes of the hitch frame on the dryer. Some modifications may need to be done at this step. Drill new holes or move the brace accordingly to the fit of the unit being installed.
7. Install the *INNER BRACE ANGLE* (D01-0721) on the top and bottom of the noise suppresser frame.
8. Be sure to check all parts for square and that all bolts are tight.

Noise Control Panels

The noise control panels consist of a sheet metal outer skin, a perforated inner skin, and a noise absorbing material lining. These panels bolt to the framework to form a shroud on the front of the dryer unit. This shroud acts as a containment/absorbing area for the sound produced by the fans. Assembly is shown in Figure 3.

NOTE: Unless otherwise noted, use the 5/16" WHIZ NUTS AND BOLTS included in the hardware package to complete all assemblies.

1. Beginning with the bottom portion of the shroud, install the center *SIDE PANEL ASSEMBLY* (D01-0751) to the *FRONT FRAME "C" CHANNEL*. Next install the center *SIDE PANEL ASSEMBLY* on the top portion of the shroud.
2. Install four more *SIDE PANEL ASSEMBLIES* one on each side of the center panel and bolt together at the 3/8" holes on the flanged sides.
3. Install each of the corner panels onto the framework and bolt to the side panels.
4. Attach the *CORNER SPLICE ANGLE* (D01-0730) to the two corners at the center support frame using the 5/16" x 3/4" *SELF-TAPPING SCREWS*. A 0.281" (9/32") hole may need to be drilled at the dimples in the corner panels for these screws.
5. Install the remaining *SIDE PANEL ASSEMBLIES* to each side to finish the enclosure.

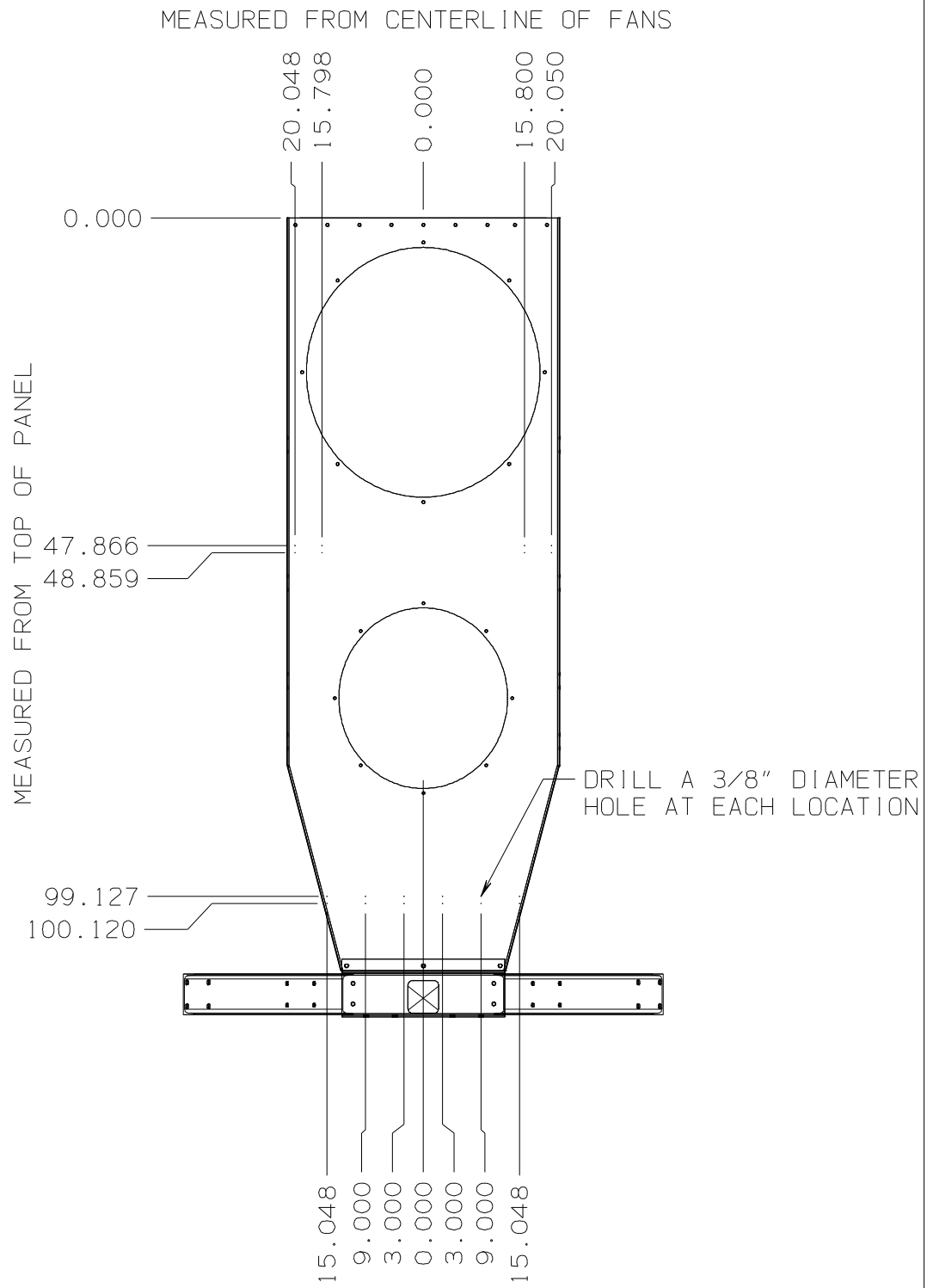


FIGURE 1
36" & 26" FANS
DRILLING LOCATIONS FOR SUPPORT FRAMEWORK

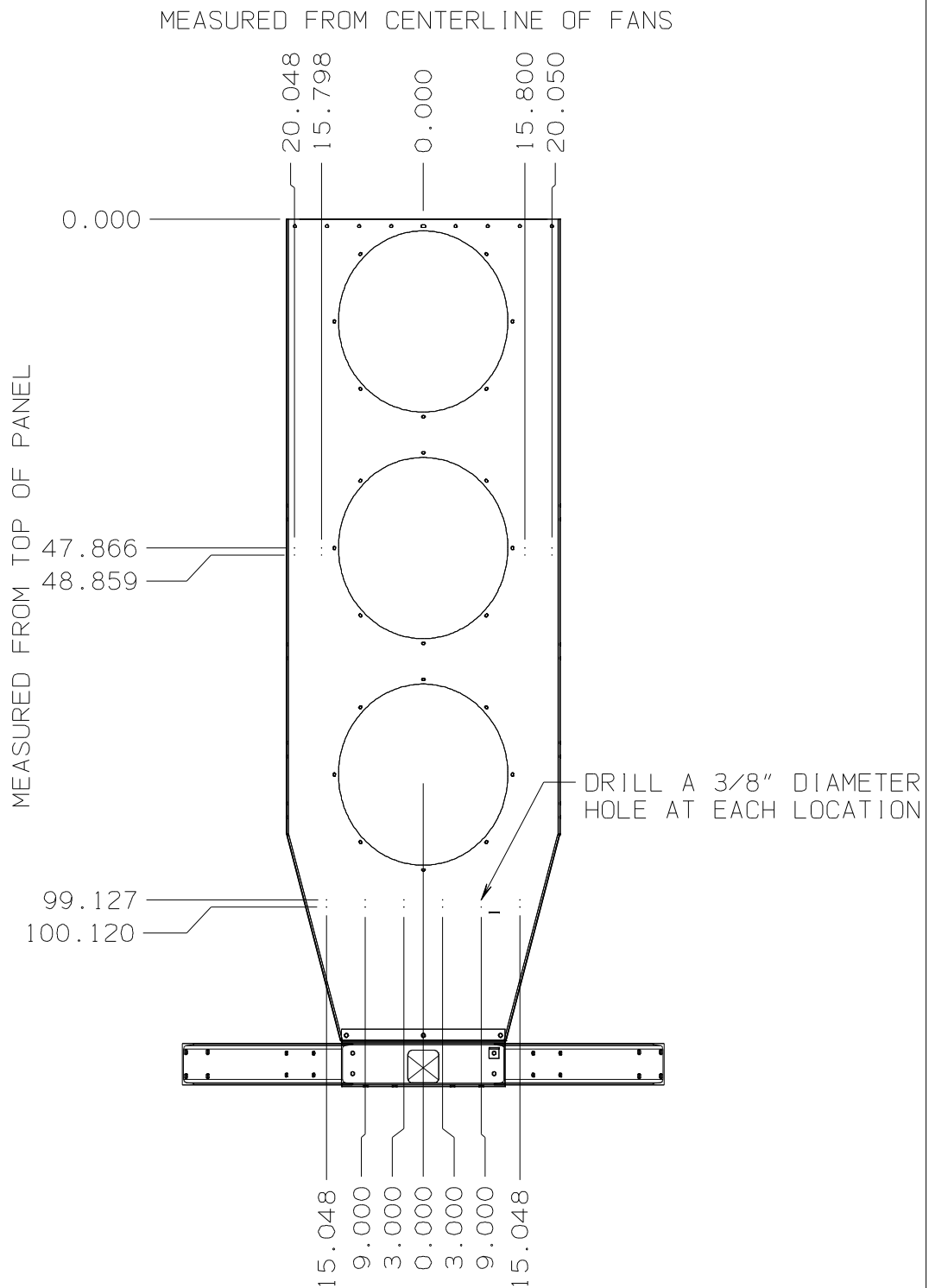


FIGURE 2
3 - 26" FANS
DRILLING LOCATIONS FOR SUPPORT FRAMEWORK

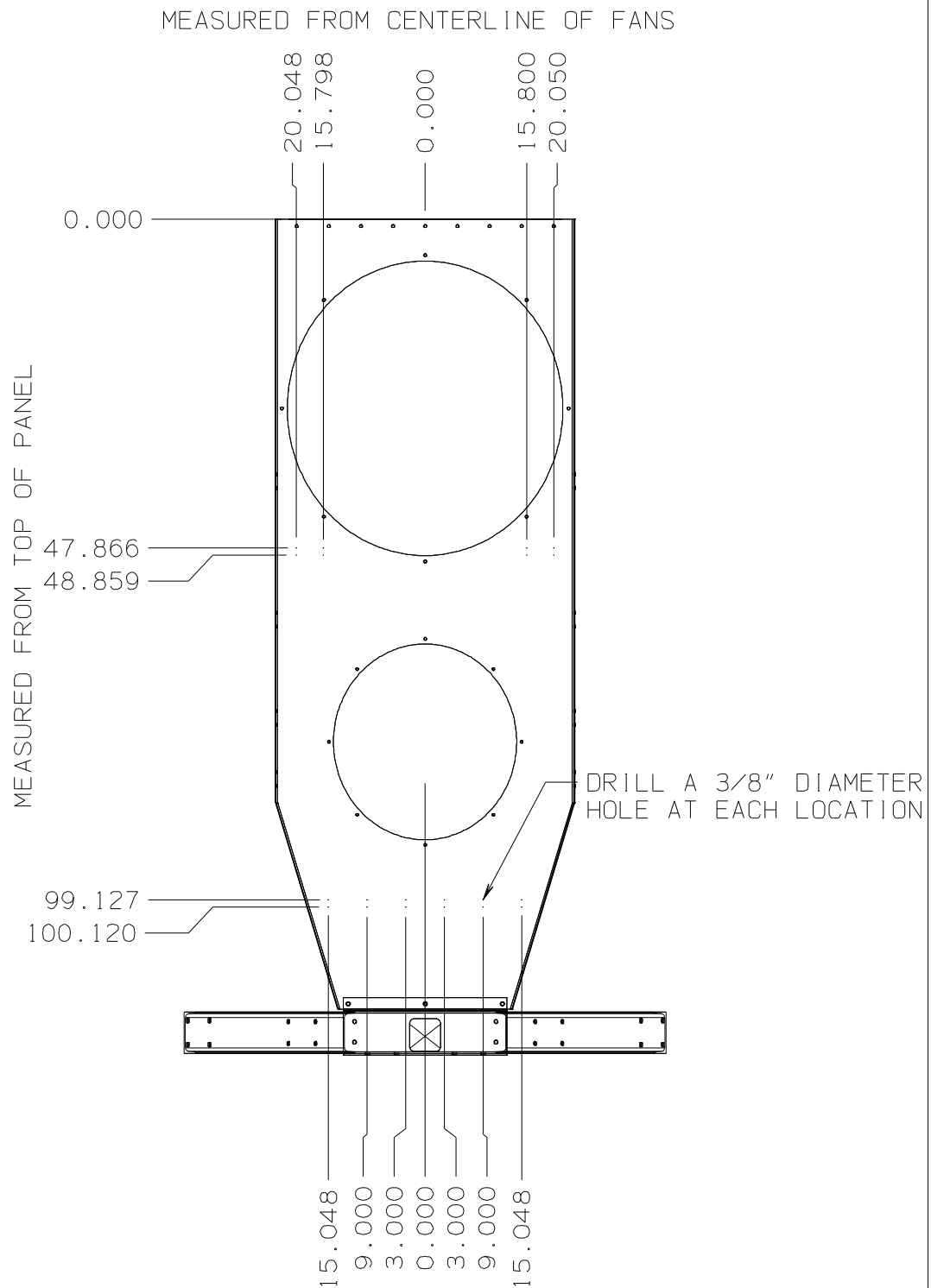


FIGURE 3
42" & 28" FANS
DRILLING LOCATIONS FOR SUPPORT FRAMEWORK

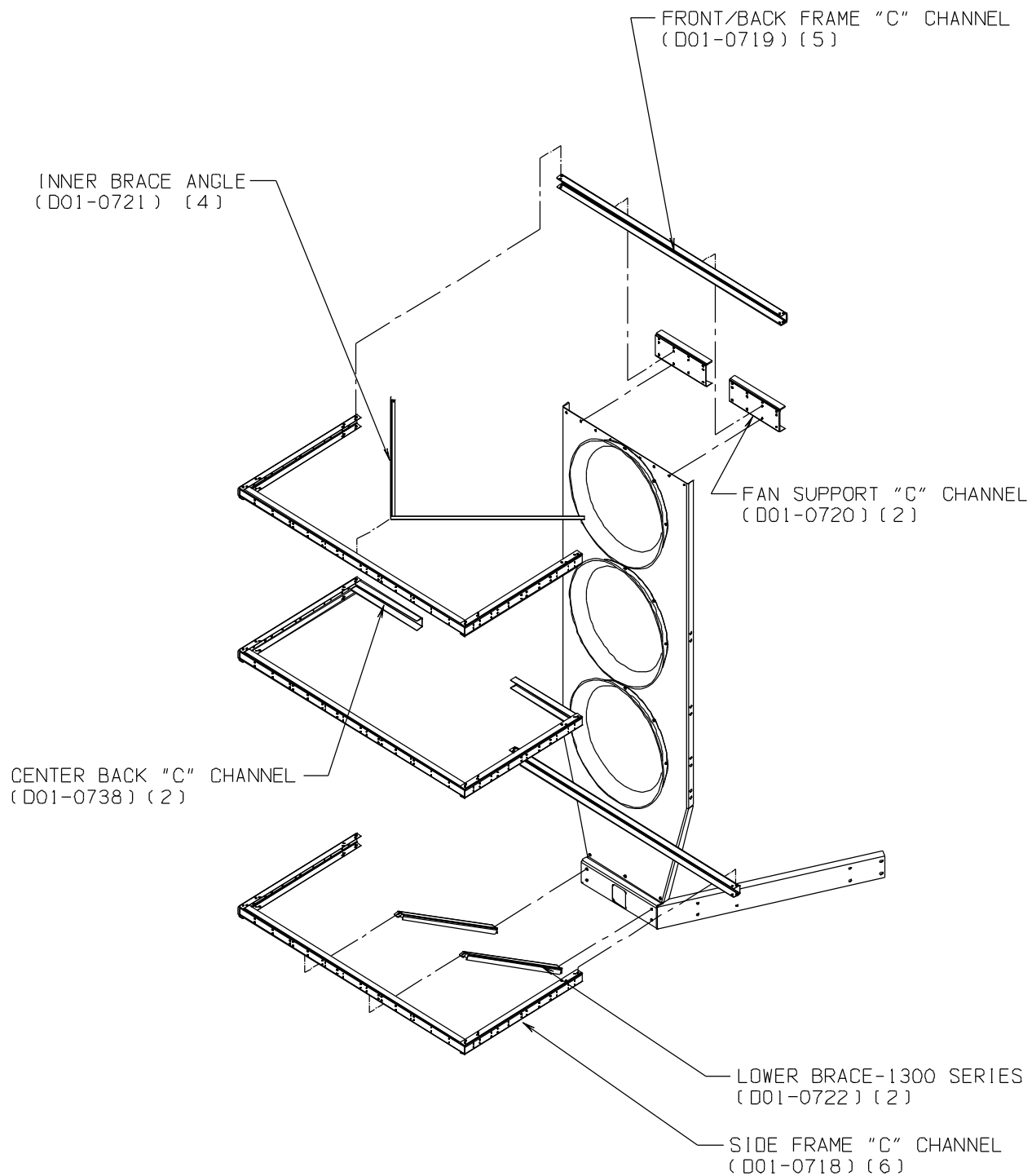


FIGURE 4
NOISE SUPPRESSOR FRAME ASSEMBLY
(TYPICAL ALL SINGLE MODULES)

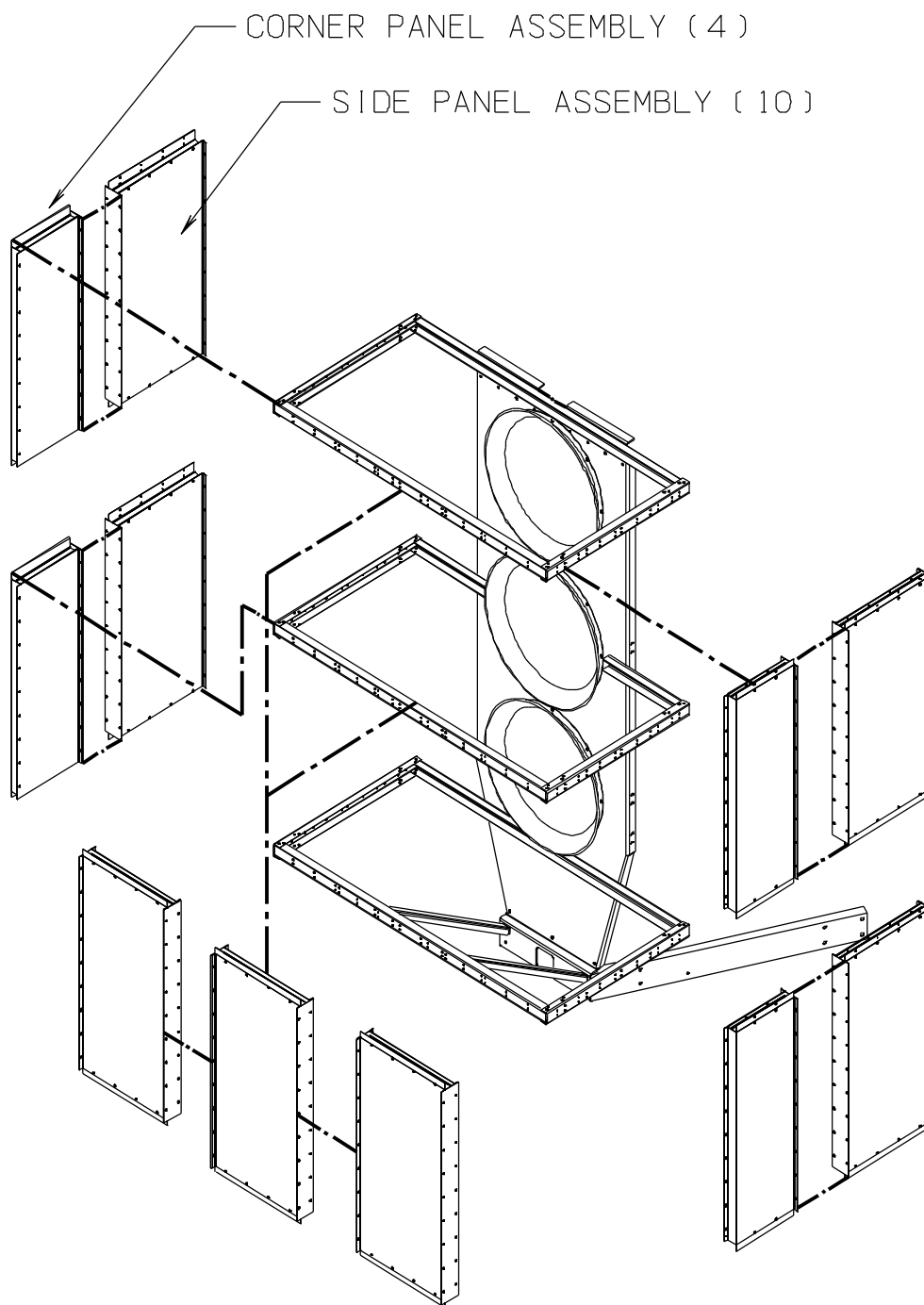


FIGURE 5
TYPICAL PANEL INSTALLATION