

# 36"/42" Aeration Transition For 12" Floor

## TR-7100

### Bin Preparation

1. Field cut a hole in the bottom ring of your bin to 101" x 11 1/2". The base angle ring must also be removed from this area.

2. Mastic sealer is to be used on all bolt together seams. Use 5/16" x 1 1/4" (S-277) bolts to bolt entrance collar mounting bracket (#8) to bin. For all other bolt up use 5/16" x 3/4" bolts.

### Entrance Collar Assembly

1. Bolt together all right hand and left hand parts, i.e. entrance collar top, right hand (#2) to left hand (#3).

2. Bolt the entrance collar braces (#9) and the entrance collar sides (#6 & #7) to the entrance collar bottom (#4 & #5) as shown.

3. Put in place the entrance collar top (#2 & #3) as shown. **NOTE: Do not bolt up holes on the fan side of the collar until the transition top panel is installed.**

4. Bolt the entrance collar mounting bracket (#8) to the entrance collar side (#6 & #7).

Slide the entrance collar assembly into the cut-out in the bin. Field drill 8 holes in the bin for the entrance collar mounting bracket. Bolt up the entrance collar mounting bracket to the bin. If there is a gap between the entrance collar top and the cut-out in the bin, place shims above each brace (#9).

5. Field drill 46 holes in the sizing angles (#1) and the entrance collar top (#2 & #3) and use self-tapper screws (S-7621).

### Final Assembly

1. Place the flange of the bottom panels (#14 & #15) into the groove of the entrance collar bottom (#4 & #5).

2. Bolt transition side panels (#12 & #13) to bottom panels (#14 & #15) and to entrance collar sides (#6) as shown.

3. Bolt transition top panels (#10 & #11) to the transition side panels (#12 & #13) and to the entrance collar top (#2 & #3) as shown.

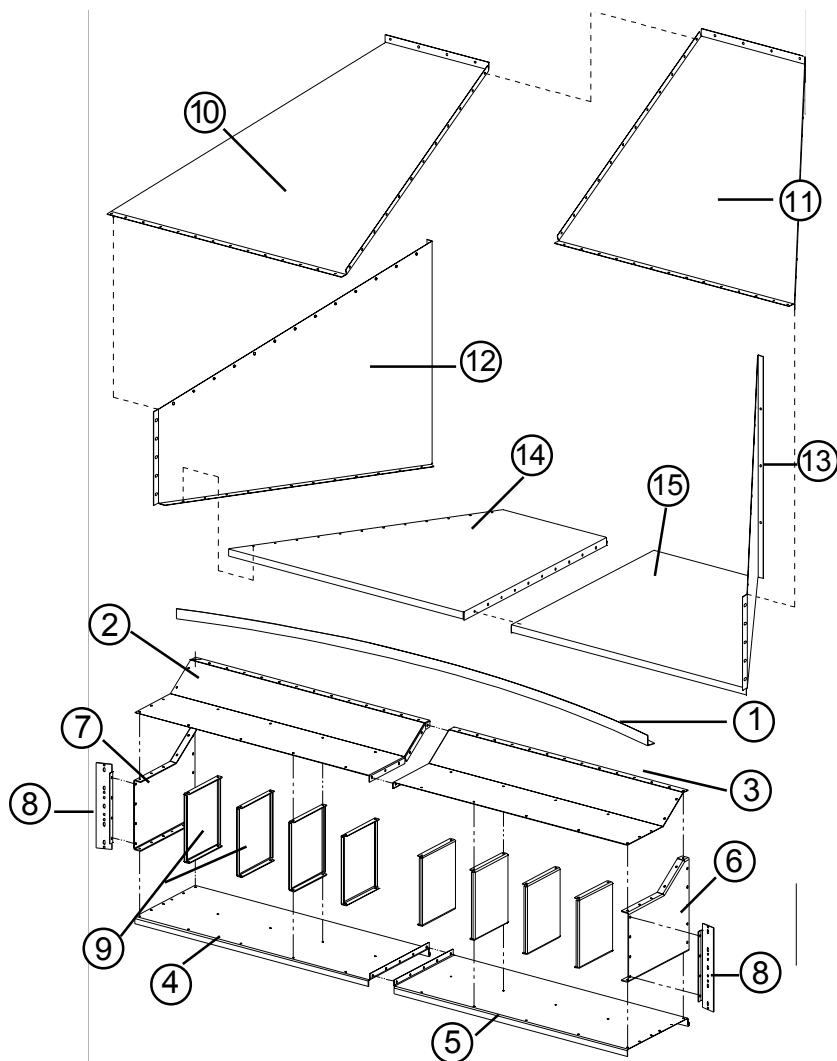


Figure 1: Transition exploded view

## 36"/42" Aeration Transition For 12" Floor

### TR-7100 Parts List

Item #	Part #	Description	Quantity
1	TR-6194	Sizing Angle	2
2	TR-7073	Entrance Collar Top, Left Hand	1
3	TR-7074	Entrance Collar Top, Right Hand	1
4	TR-7070	Entrance Collar Bottom, Left Hand	1
5	TR-7069	Entrance Collar Bottom, Right Hand	1
6	TR-7072	Entrance Collar Side, Right Hand	1
7	TR-7071	Entrance Collar Side, Left hand	1
8	TR-6476	Entrance Collar Mounting Bracket	2
9	TR-6312	Entrance Collar Brace	8
10	TR-7093	Transition Top Panel, Right Hand	1
11	TR-7092	Transition Top Panel, Left Hand	1
12	TR-7097	Transition Side Panel, Right Hand	1
13	TR-7096	Transition Side Panel, Left Hand	1
14	TR-7095	Transition Bottom Panel, Right Hand	1
15	TR-7094	Transition Bottom Panel, Left Hand	1
NS	S-275	5/16" x 3/4" Bin Bolt	198
NS	S-396	5/16-18 Hex Nut	208
NS	S-4485	Mastic Sealer	4
NS	S-7261	Screw #10-16x1" Self-Drilling	46