

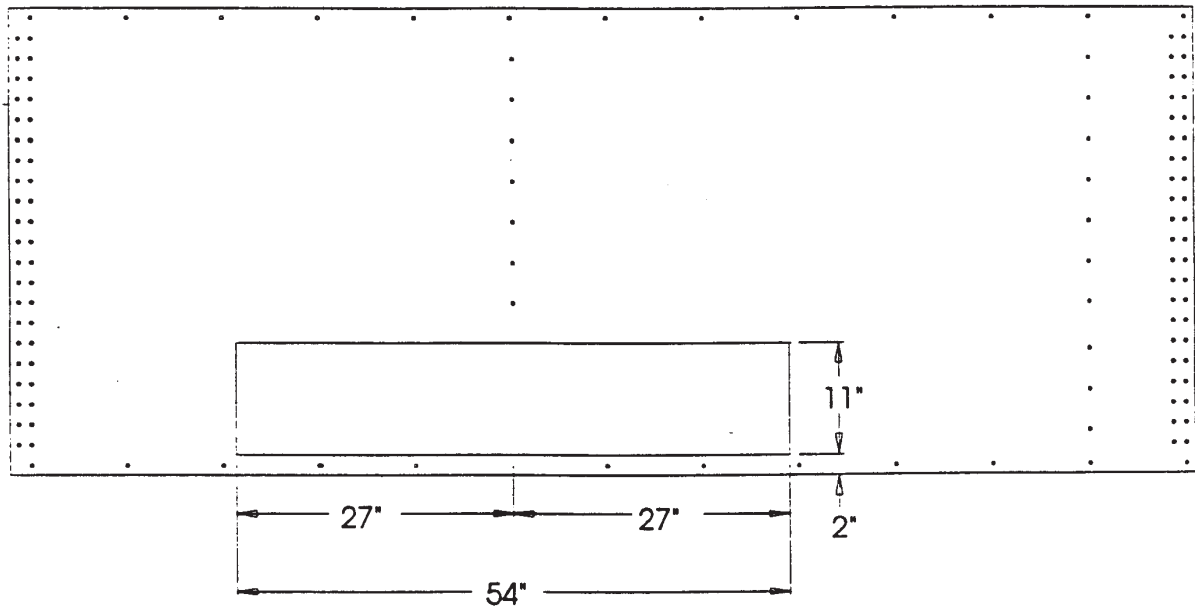
Transition Assembly

READ ALL INSTRUCTIONS PRIOR TO ASSEMBLY OF TRANSITION.

Transition opening location must be centered on sidewall stiffener (refer to diagram).
Transition opening must be cut 54" x 11" and 2" above the concrete. **Remove stiffener before cutting sidewall.** Cut sidewall to dimensions given to insure proper fit.

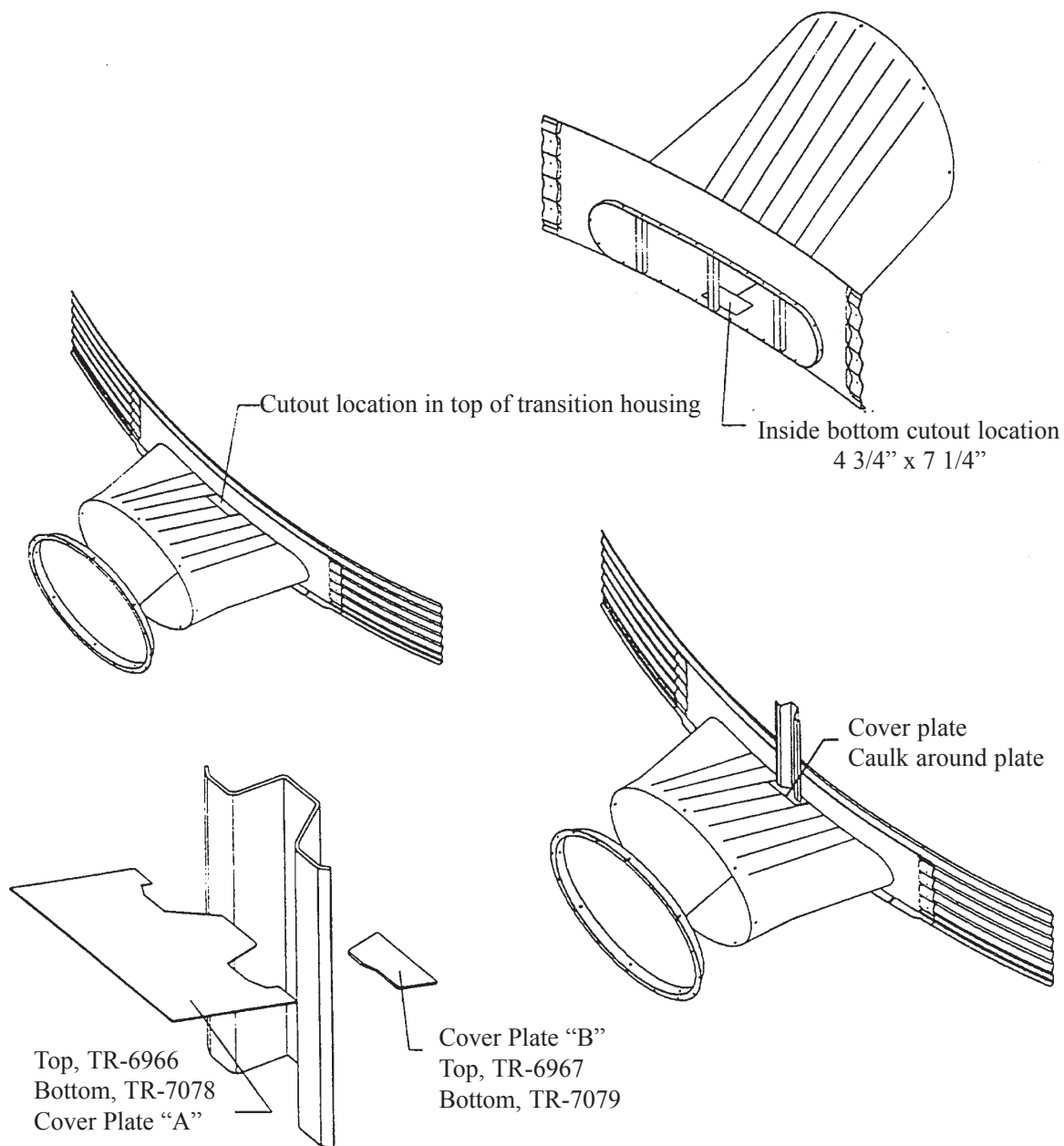
DO NOT CUT STIFFENER.

Now assemble transition as shown on next page.



VIEWED FROM INSIDE OF BIN

Cut a 4 3/4 x 7 1/4" hole in the bottom center of the transition before attaching the transition to the bin. Now, attach the transition to the sidewall sheet as shown in the diagram above. Field drill 3/8" stiffener holes through the transition entrance collar. A hole must now be cut in the top center of the transition. Mark a 7 1/4" x 8" opening for the stiffener to enter. Cut along the line. The bottom edge of the entrance collar will also need to be trimmed to provide clear access for the stiffener.



SEAL KIT TR-5062 (OPTIONAL)

Air deflector included in Seal Kit TR-5062 may be installed over stiffener at customer's request.

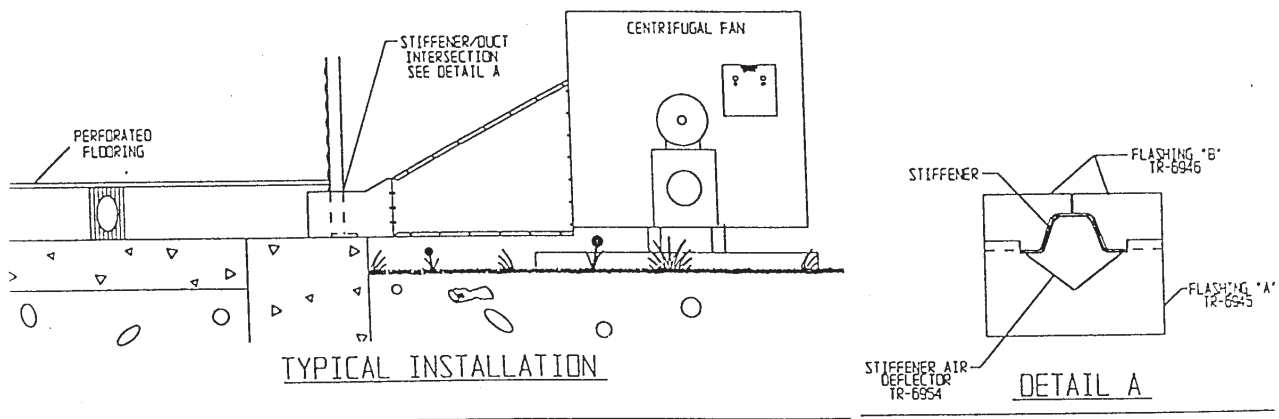
Place stiffener thru transition housing and attach to sidewall. Be sure stiffener anchor is located on anchor bolt. Place washer and nut on anchor bolt and tighten.

Stiffener-transition cover plates are supplied to seal stiffener to the transition housing. Caulk one side of cover plate on the 3 straight edges. Place stiffener-transition cover plate on top of transition housing and use the self drilling screws to fasten cover plate to transition. Repeat this procedure on the inside bottom of the transition housing. The cover plates will need to be trimmed to fit properly on the bottom. Caulk everything well when plates have been secured.

UNIVERSAL STIFFENER SEAL KIT

SEAL KIT TR-7067 (OPTIONAL)

Air deflector included in Seal Kit TR-7067 may be installed over stiffener at customers request.



An access hole must be cut for the stiffener in bottom of the transition housing. Cut a 9" x 6" hole in the bottom center of the transition before attaching the transition to the bin. Attach transition to sidewall sheet as shown in diagram. Field drill 3/8" stiffener holes thru transition entrance collar. A hole must now be cut in the top center of the transition. Mark a 9" wide x 6" opening for the stiffener to enter. Cut along the line. Bottom edge of entrance collar will also need to be trimmed to provide clear access for stiffener.

Place stiffener thru transition housing and attach to sidewall. Be sure stiffener anchor is located on anchor bolt. Place washer and nut on anchor bolt and tighten.

Stiffener-transition cover plates are supplied to seal stiffener to the transition housing. Caulk one side of cover plate on the 3 straight edges. Place stiffener-transition cover plate on top of transition housing and use the self drilling screws to fasten cover plate to transition. Repeat this procedure on the inside bottom of the transition housing. The cover plates will need to be trimmed to fit properly on the bottom. Caulk everything well when plates have been secured.