

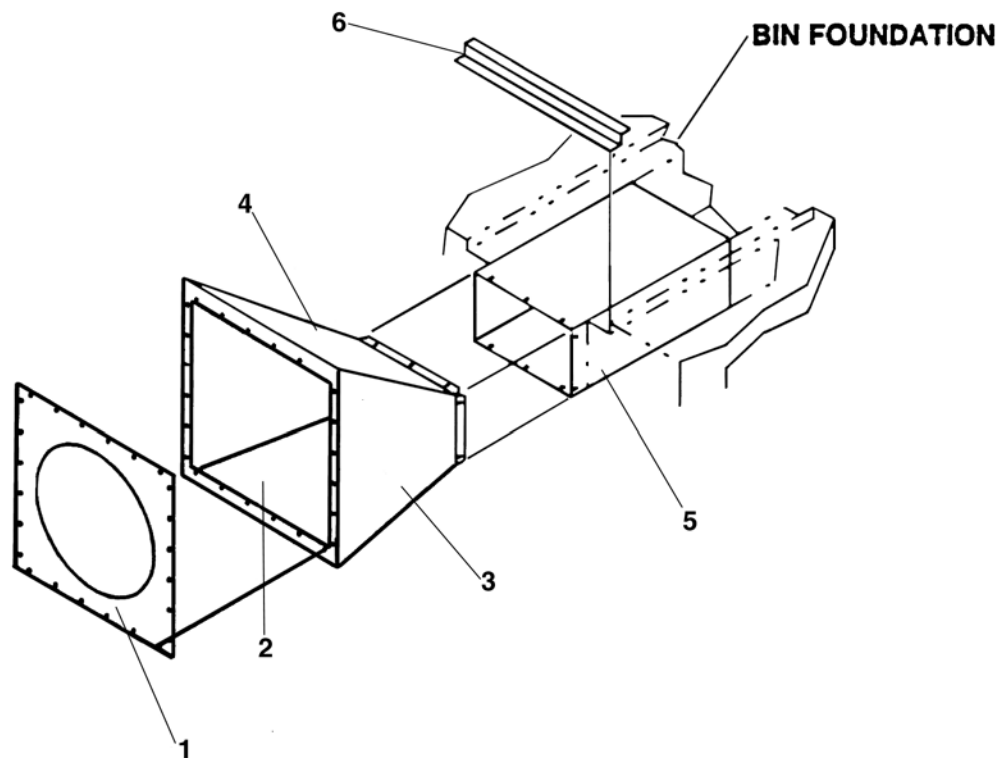
Flush Floor Aeration (Using TR-1737)

This transition is used in Farm Bin aeration systems (N series bins to 12 rings tall) or in Commercial Tank aeration systems using 12" - 18" axial fans. Refer to the Aeration System Plan for trench cross section as well as for trench layout. The cross section views shown below apply to the trench only for the length of the steel inlet duct.

Assembly

Assemble two inlet duct sections (FL-460) to form a box. Assemble transition as shown below and then bolt (5/16" x 3/4" bin bolts), to inlet duct. Caulk all seams.

IMPORTANT: If corrugated floor sections are to be used, turn to page two (2). If Cor-lok or Cut-lok floor planks, see page three (3).



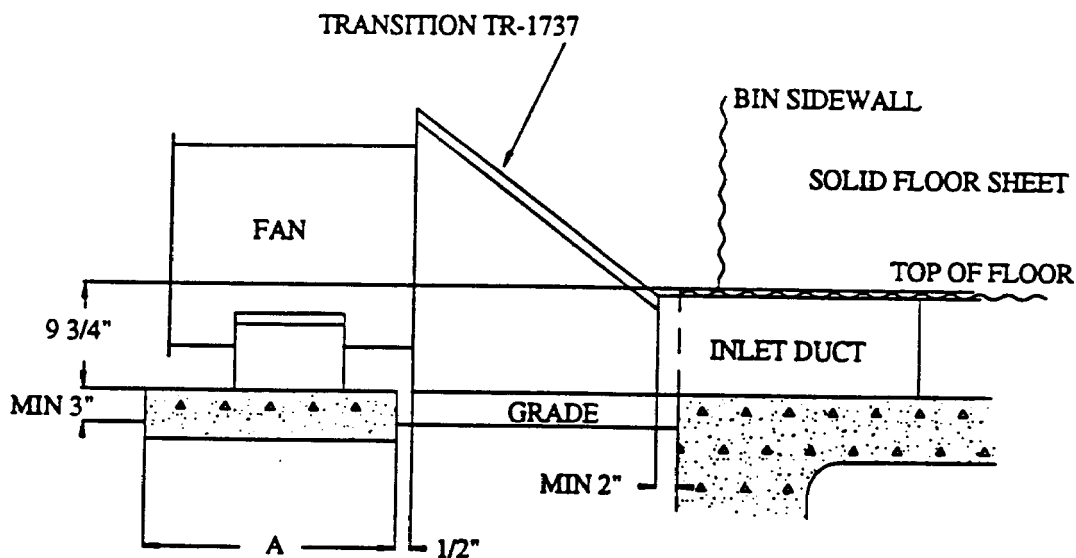
1. Transition Face Plate (FL-466)
2. Transition Bottom (FL-464)
3. Transition Side (FL-465)
4. Transition Top (FL-463)
5. Inlet Duct Section (FL-460) -2 required
6. Support Zee (FL-6942) Cor-lok & Cut-lok Only

Form Details Using Corrugated Floor Sections

Notch foundation forms as needed to properly locate transition assembly. The transition and inlet duct must be fastened down to resist uplift forces from wet concrete.

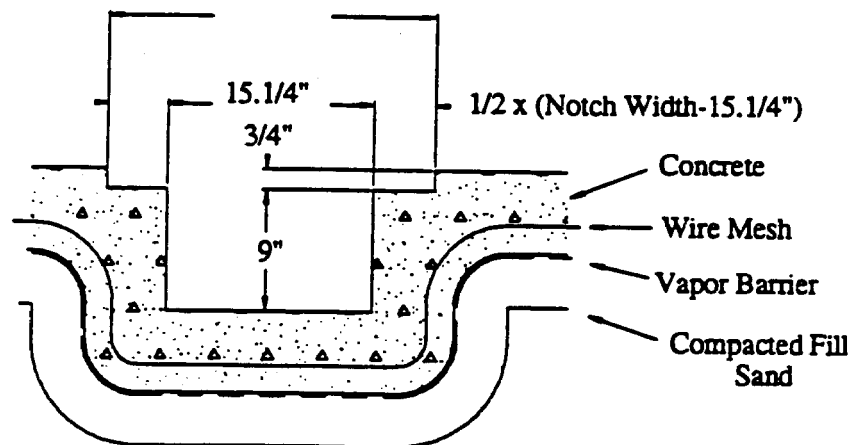
NOTE: Notch for floor planks over inlet duct must match aeration system plan. Trench depth beyond inlet duct must also match aeration system plan.

1. Complete form work for aeration system, place rebar and pour concrete.
2. Place floor supports and planks per Aeration System Plan.
3. Install flashing using self-drilling screws into floor planks and ram-sets (not provided by GSI) into concrete.



	A
18" Fan	23" SQ
14" Fan	
12" Fan	14" SQ

See Aeration Plan Section A-A for Notch Width.

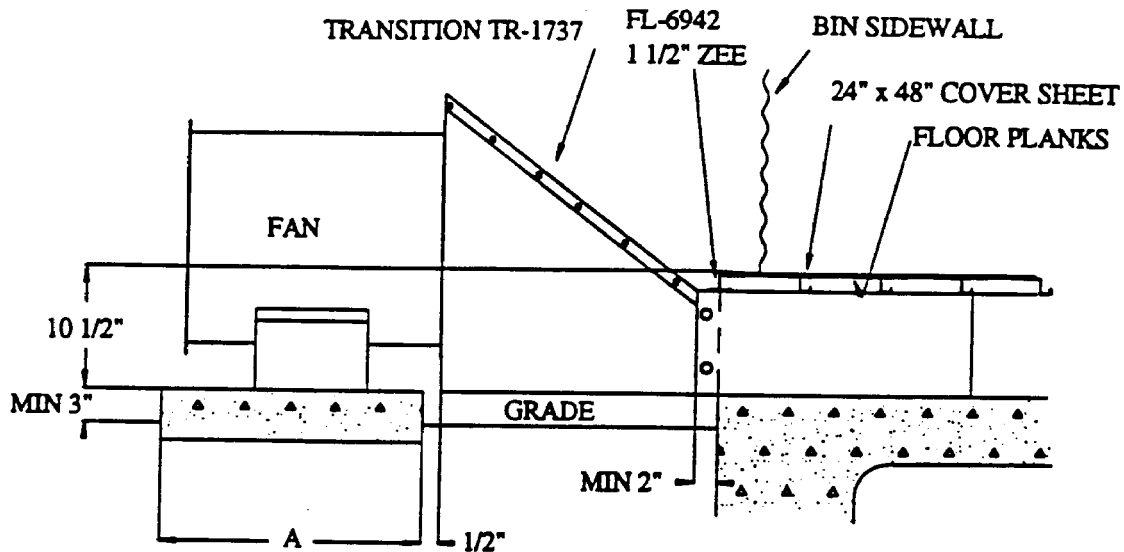


Form Details Using Cor-Lok/Cut-Lok Floor

Notch foundation forms as needed to properly locate transition assembly. The transition and inlet duct must be fastened down to resist uplift forces from wet concrete.

NOTE: Notch for floor planks over inlet duct must match aeration system plan. Trench depth beyond inlet duct must also match aeration system plan.

1. Complete form work for aeration system, place rebar and pour concrete.
2. Place floor supports and planks per Aeration System Plan.
3. Install flashing using self-drilling screws into floor planks and ram-sets (not provided by GSI) into concrete.



	A
18" Fan	23" SQ
14" Fan	
12" Fan	14" SQ

See Aeration Plan Section A-A for Notch Width.

