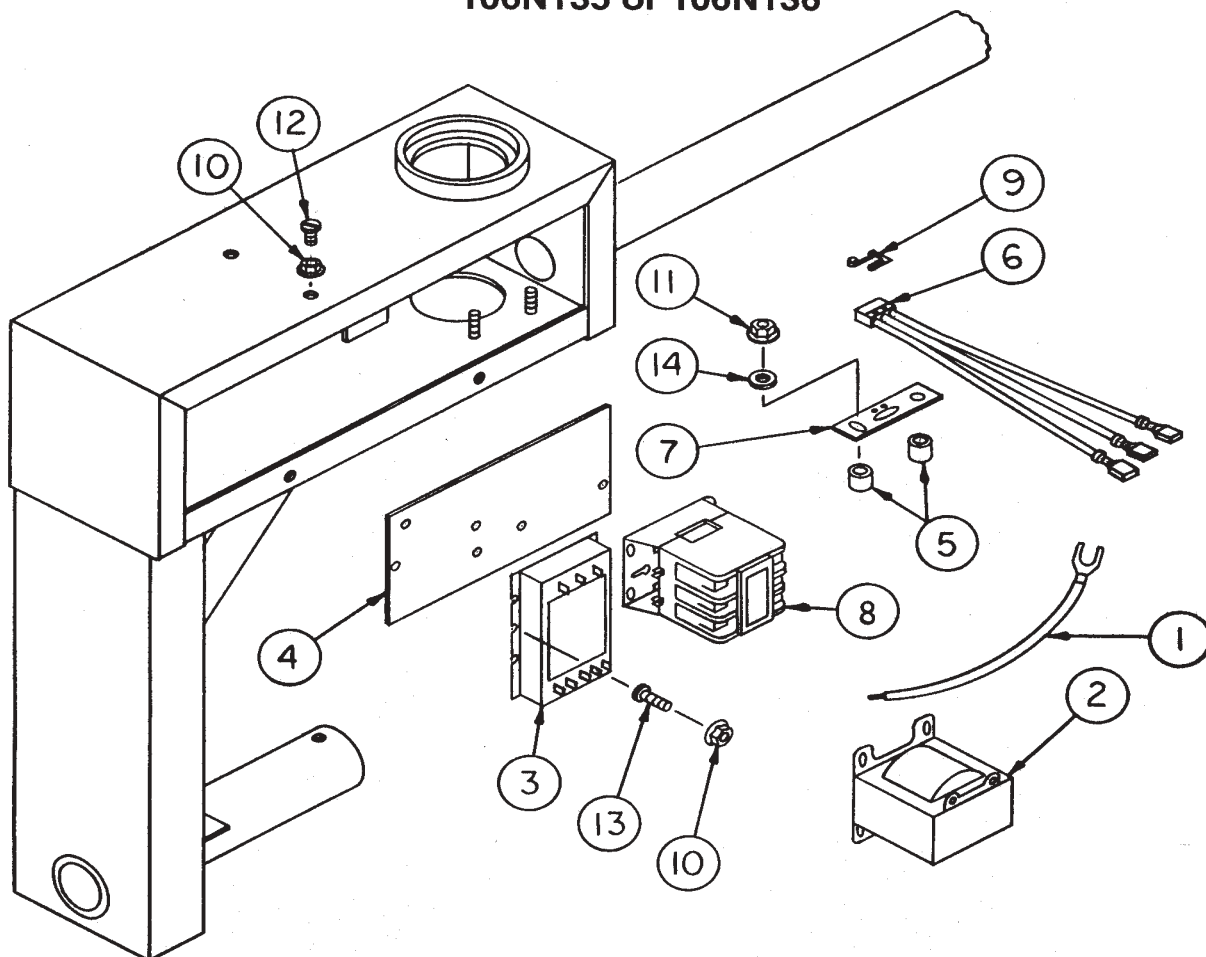


DESIGN III STIR-ATOR
STIR GUARD OPTION
106N135 or 106N136



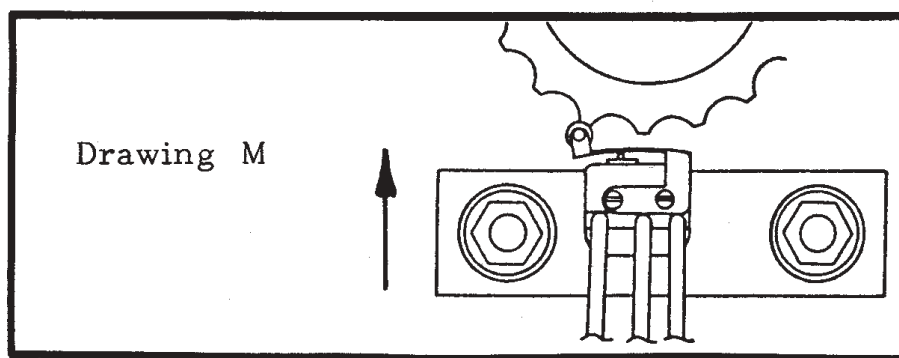
REF. NO.	PART NUMBER	NO. REQ'D.	DESCRIPTION
1.	106E032	2-1 PH	Jumper wire (Black)
	106E032	3-3 PH	Jumper wire (Black)
2.	106E061	1	440 Volt transformer (440 Volt only)
3.	106E063	1	Solid state timer - 45 minutes
4.	106E066	1	Stir-Guard mounting plate
5.	106E073	2	Switch stand-off
6.	106E074	1	Switch with leads
7.	106E075	1	Switch mounting plate w/clinch nuts
8.	2EL0245	1	Magnetic contactor, 40 amp
9.	2EL0641	1	Auxiliary actuator with hardware
10.	1FH0993	6-230V	Hex flange whiz lock nut, #8-32 UNC
	1FH0993	10-440V	Hex flange whiz lock nut, #8-32 UNC
11.	1FH0995	2	Hex flange whiz lock nut, 1/4-20 UNC
12.	2FH0772	2	Slotted pan head machine screw, #8-32 UNC x 1/2 (440 Volt only)
13.	2FH0775	4	Slotted pan head machine screw, #8-32 UNC x 3/4
14.	3FH0863	2	Flat washer, 1/4"
	105N0092	1	Stir-Guard wire package

Stir-Guard Operation

The Stir-Guard is designed to protect your grain by shutting off the Stir-Ator if the unit is not advancing around the bin normally. As the gearmotor drives the unit around the bin, a microswitch actuator which rides on the lower notched swivel block sends a pulse to the solid state timer each time the roller advances one notch. If the unit does not advance forward enough to actuate the switch in 45 minutes, the timer will run out and the power to the motors on the Stir-Ator will be shut off by the contactor located in the swivel box of the Stir-Ator.

To reset the Stir-Guard timer, move the switch box handle to the "off" position, and then back "on". The unit will start up again. Before the Stir-Guard is reset, the problem that caused the Stir-Guard to shut the unit off should be located and corrected.

If adjustment of the microswitch roller actuator becomes necessary, turn off the power to the swivel at the switch box. Remove the right swivel box cover and loosen the nuts on the roller switch plate. Rotate the swivel block so the switch roller is riding on the peak of a swivel cog (**See Drawing M**). Slide the roller switch plate slowly in until the microswitch just clicks, then move the switch an additional 1/16" and tighten the nuts. Rotate the swivel to assure the switch clicks "on" and "off" as the roller rides in and out on the swivel cog. This is necessary for a pulse to be sent to the Stir-Guard timer.



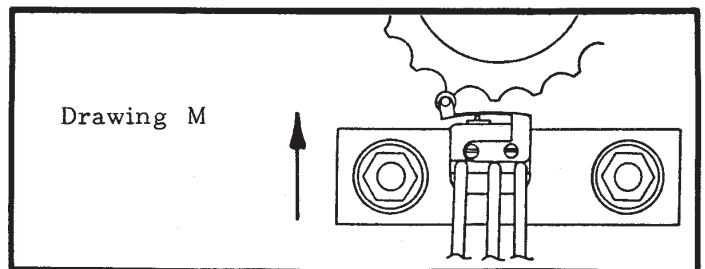
**STIRATOR TRAVEL TIME
ONE REVOLUTION**

1986 DESIGN III STIR-GUARD OPTION INSTALLATION INSTRUCTIONS

- 1) Disconnect power to the unit.
- 2) Remove the two long swivel covers on the Stir-Ator yoke swivel housing.
- 3) For 230 volt units, go to 4.

For 440 volt units, remove the two self-tapping screws on the top of the swivel yoke enclosure. Position the Solid State module #2EL1207 inside the top of the yoke swivel housing with the five terminals on the module pointing toward the Stir-Ator swivel. Bolt the module onto the yoke where the self-tapping screws were removed using two #8 x 1/2" screws and whiz lock nuts.

- 4) Fasten the Stir-Guard assembly plate onto the swivel housing with the Stir-Guard contactor toward the swivel, secure with the #8 whiz lock nuts. (Do not loosen the nuts holding the components on the Stir-Guard assembly plate).
- 5) Place the two small spacers onto the threaded studs welded in the swivel housing, next place the Stir-Guard switch and mounting plate onto the studs with the roller switch toward the cog swivel ring. Secure with whiz lock nuts. **DO NOT TIGHTEN AT THIS TIME.**
- 6) Adjust by putting the switch roller on the peak of a swivel cog. (See Drawing M). Move the switch plate slowly inward until the roller switch clicks. After the click, move an additional 1/16", then tighten. Rotate the swivel, be sure the roller switch rides in and out freely and the switch clicks on and off as it passes over each cog. This is necessary for a pulse to be sent to the Stir-Guard timer. Without a pulse every 45 minutes, the Stir-Guard will shut down the Stir-Ator operation.
- 7) Connect the roller switch wires to the Stir-Guard Solid State module matching wire color to module color-coded markings.
- 8) Remove lead-in wires coming from yoke pipe to the terminal strip **EXCEPT GREEN WIRE**. Cut off the spade terminal and strip the installation back 3/8". Reconnect these wires to the top and bottom lugs of the Stir-Guard contactor. (If three phase, connect red wire to center lug of Stir-Guard contactor).
- 9) Connect the black jumper wires from left side of the Stir-Guard contactor to the terminal strip. (Three phase will use the extra wire sent with the kit).
- 10) Replace the swivel box covers.
- 11) Place the "STIR-GUARD" decals on the swivel covers over the "DMC" decal already on the cover. **DO NOT COVER THE CAUTION DECAL.**



**STIRATOR TRAVEL TIME
ONE REVOLUTION**