

AUGER LIFT OPTION INSTALLATION INSTRUCTIONS Pneg-1145

1. Remove the rubber bumper pad from the rear frame.
2. Cut off the two auger support rods and grind flush to frame. NOTE: If your unit has a bolt-on support, remove auger support plate and disassemble.
3. Drill four (4) - $\frac{13}{32}$ " diameter holes in rear frame (See Fig.1). NOTE: Some units may have prepunched holes.
4. Attach the rubber bumper pad to the auger lift with $\frac{1}{4}$ " x 1" machine screws and $\frac{1}{4}$ " hex nuts.
5. Bolt 8" auger lift assembly to rear frame using $\frac{3}{8}$ " x 3- $\frac{1}{2}$ " hex bolt and hex lock nut. Do not over tighten nut as the lift must pivot freely.
6. Bolt auger winch to rear frame using two $\frac{3}{8}$ " x 1" hex bolts, lock washers, and hex nuts.
7. Unwind a short length of cable from the winch (See Fig.2). With the auger lift assembly in ward and resting on top of the rear frame, run the cable over the top of the upper pulley and down inside and below the auger pulley. Attach the cable to lift assembly with a $\frac{3}{8}$ " x 2- $\frac{1}{2}$ " clevis pin and a $\frac{1}{8}$ " cotter hair pin. Winch the cable tight. This is the stored position of the auger lift.
8. To lift the auger, remove the $\frac{3}{8}$ " clevis pin holding the cable and hold on to the cable. Pivot the lift assembly outward. Unwind enough cable to take the cable under the auger and back up and over the bottom pulley of the lift assembly. Reconnect cable with the clevis pin. Winch the auger up until the lift assembly pivots inward. This is the transport position. Keep the cable tight and the winch **locked** in this position (See Fig.3).

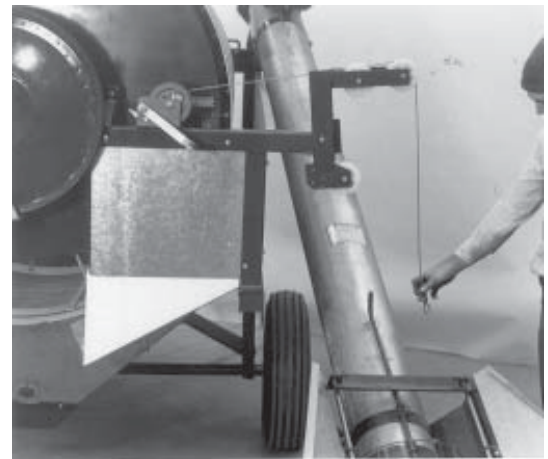
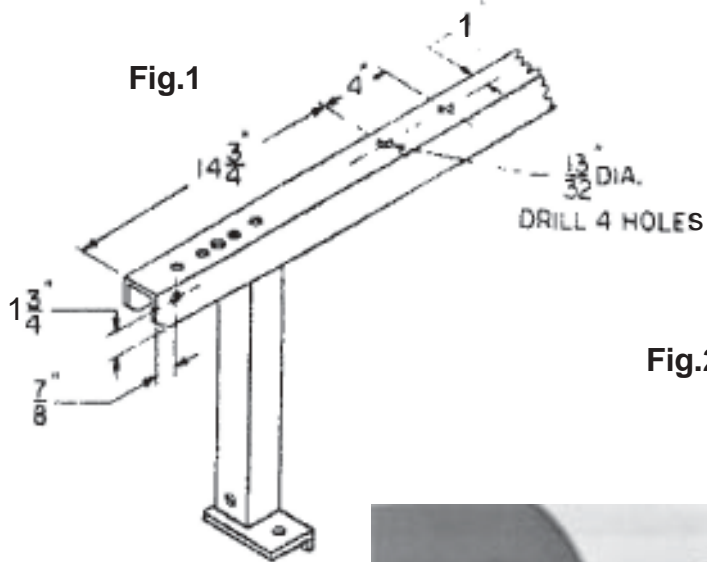
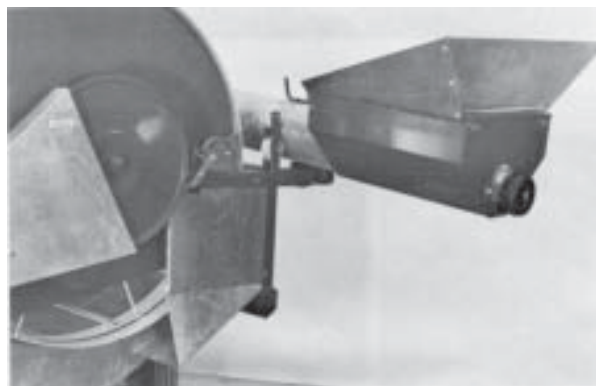
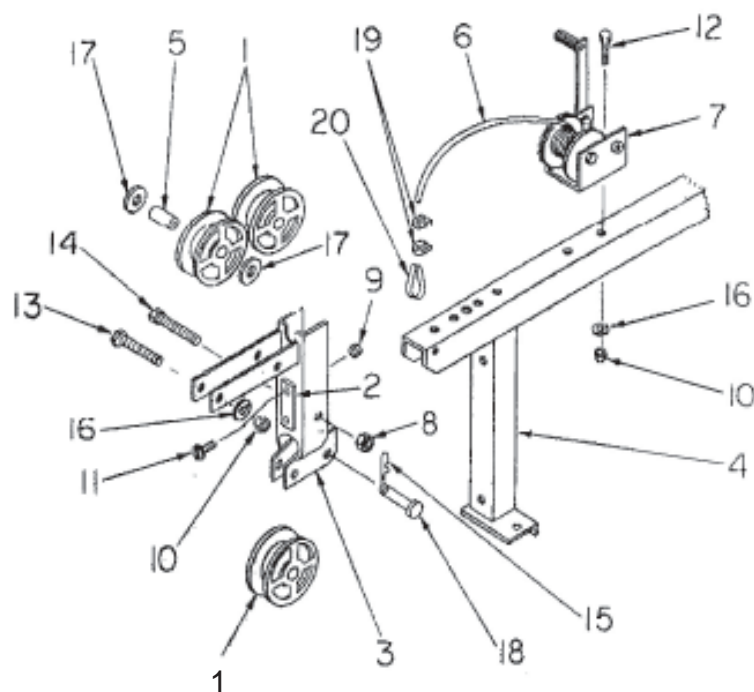


Fig.3



**DMC MODEL 44 HI-CAP CLEANER
AUGER LIFT OPTION
205N0048**



PARTS LIST

REF #	PART #	QTY	DESCRIPTION
1	104B0008	3	WHEEL, 4"OD x 1-3/8 WIDE 49/64" BORE POLY
2	204B0015	1	RUBBER BUMPER PAD
3	205B0125	1	AUGER LIFT FRAME
4	205B0127	1	REAR FRAME
5	206B0026	3	AUGERLIFT WHEEL BUSHING
6	206B0078	1	AUGER LIF CABLE
7	MS0009	1	HAND WINCH
8	S-8235	1	HEX LOCK NUT, 3/8"
9	S-1102	2	HEX NUT, 1/4"
10	S-7525	5	HEX NUT, 3/8"
11	S-8846	2	MACHINE SCREW RHS 1/4 x 1"
12	S-7520	2	HEX BOLT, 3/8 x 1"
13	S-7808	3	HEX BOLT, 3/8 x 2-1/2"
14	S-8676	1	HEX BOLT, 3/8 x 3-1/2"
15	3FH0770	1	COTTER HAIR PIN, 1/8" x 2-3/8"
16	S-1054	5	LOCK WASHER, 3/8"
17	3FH0828	6	MACHINERY BUSHING, 3/4"ID x 14GA.
18	35-0016	1	CLEVIS PIN, 3/8" x 2-1/2"
19	5FH0085	2	CABLE CLAMP, 1/8"
20	5FH0090	1	CABLE THIMBLE, 5/32"