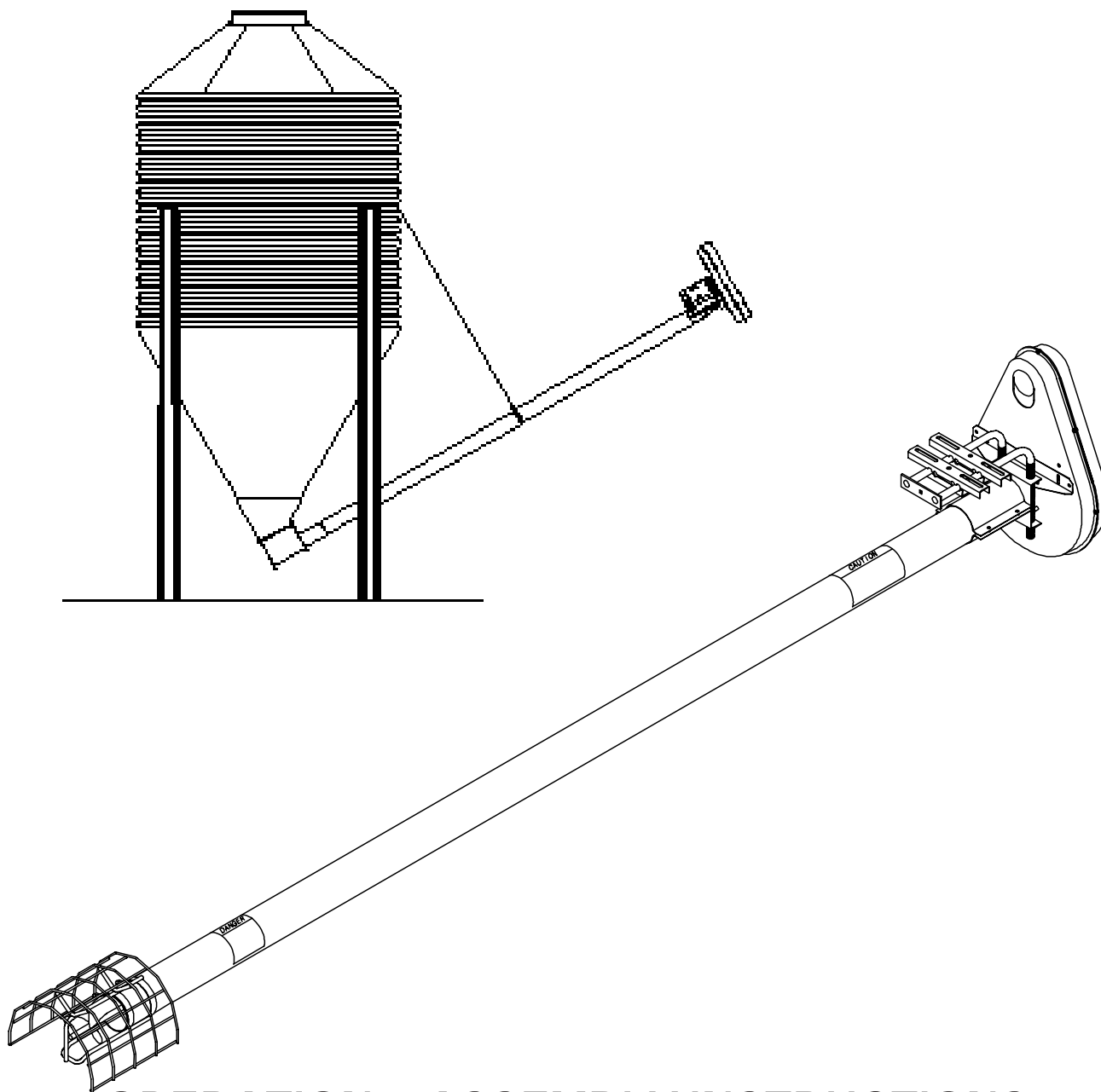




PNEG-195

4" UTILITY & BULK TANK AUGERS



OPERATION & ASSEMBLY INSTRUCTIONS

PRINTED:
REVISED: MARCH 6, 1997



GRAIN SYSTEMS, INC. Assumption, IL 62510 USA 217-226-4421

TABLE OF CONTENTS

Safety Decals — — — — —	1
Bin Safety Sign Instructions — — — — —	3
Improvements/Safety Equipment/Operator Qualifications — — — — —	4
General Safety Statements — — — — —	5
Sign-Off Sheet — — — — —	6
General Safety Precautions — — — — —	7
Operating Instructions — — — — —	9
Horsepower Information for Electric Motor Drive — — — — —	11
Trouble Shooting — — — — —	12
Assembly Instructions for 4" Utility & Bulk Tank Augers — — — — —	13
4" Utility & Bulk Tank Auger Part List — — — — —	15

SAFETY 1st

GSI equipment is built to provide many years of dependable service to our customers through durable craftsmanship.

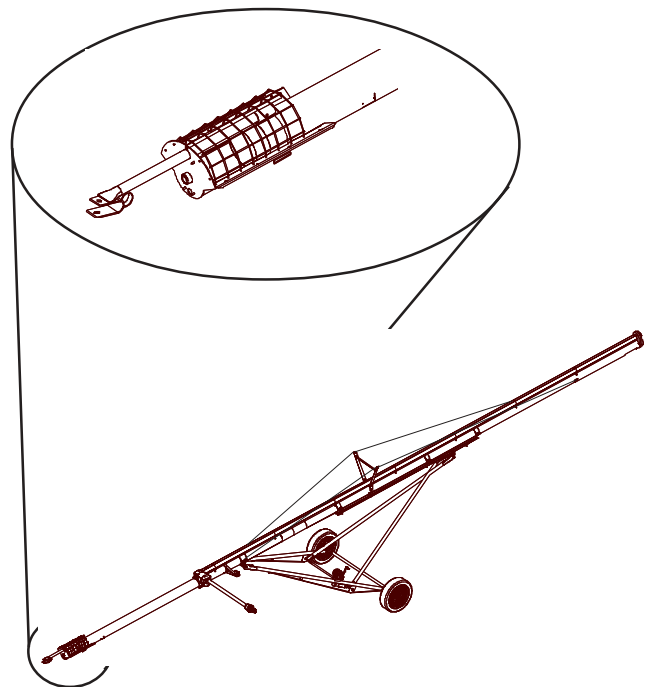
*Replace missing guards and shields
FREE OF CHARGE!*

One of the most important aspects of GSI engineering is **SAFETY 1st** design throughout all product lines. At GSI - safety is NO ACCIDENT!

That is why GSI is implementing its **SAFETY 1st** program. Should you ever need guards, shields, safety decals or owner/operator manuals, simply contact GSI, and we will supply you with them **FREE OF CHARGE!**

While it is our main goal for GSI to be the world leader in auger manufacturing, it is always our first priority to keep our customers safe.

If you need any of the above listed safety items or have safety questions, please contact GSI:



PO Box 20
Assumption, IL 62510
Ph: 217-226-4421



SAFETY DECALS

Check components as specified below to insure that safety decals are present and in good condition. If a decal cannot be easily read for any reason or has been painted over, replace it immediately. Decals may be ordered through your local Grain Systems, Inc. Dealer.

"WARNING" Decal

See Decal "A" Page #2 for Detail

Located on Outside of Front Belt Guard Cover

Size: 2.1/4" x 5"

Part Number: DC-995

"DANGER" Decal

See Decal "B" Page #2 for Detail

Located on Inside of Back Belt Guard Cover

Size: 2.1/4" x 5"

Part Number: DC-994

"DANGER" Decal

See Decal "C" Page #2 for Detail

Located on Unloading Tube near Head Plate

Size: 4" x 9"

Part Number: DC-834

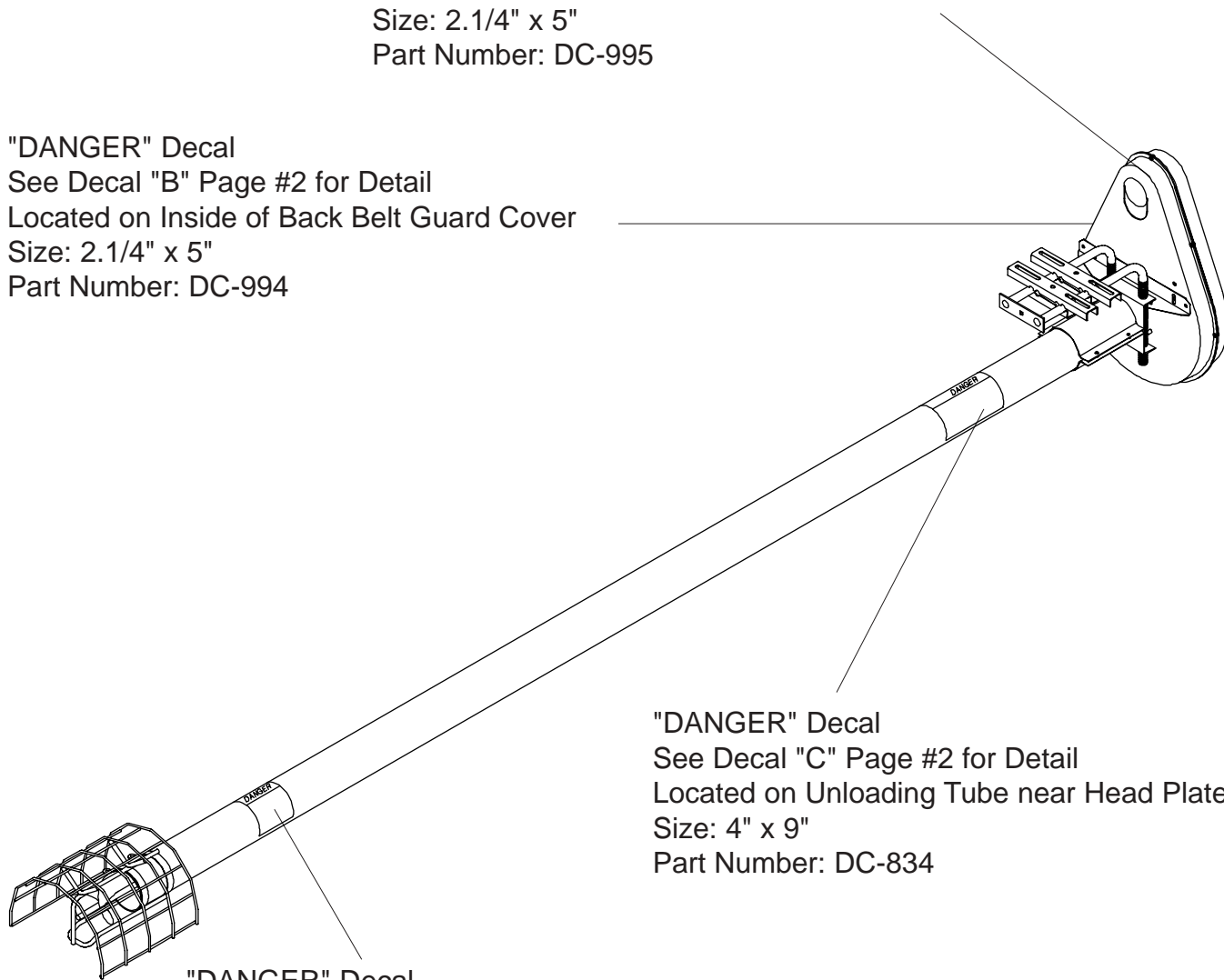
"DANGER" Decal

See Decal "D" Page #2 for Detail

Located on Unloading Tube near Intake Guard

Size: 4.1/4" x 5.7/16"

Part Number: DC-455



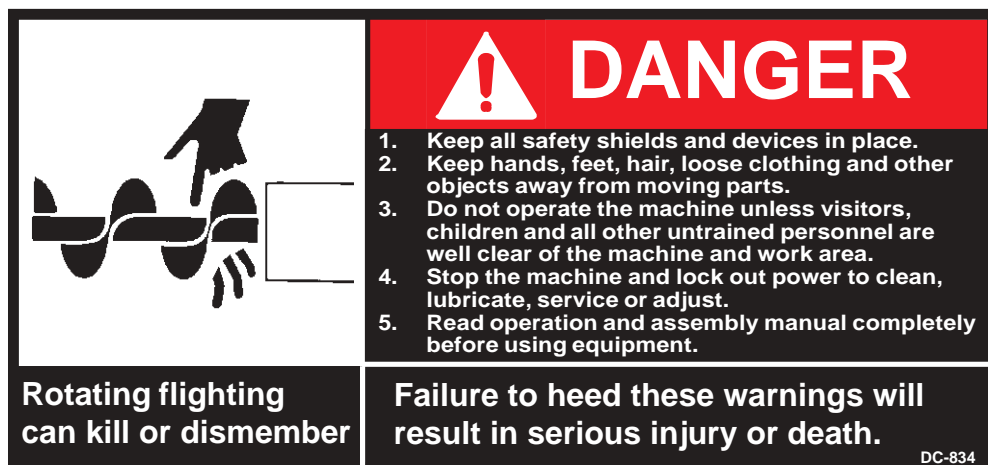


DECAL DETAILS



DETAIL "A"
"WARNING" Decal
Located on Outside of Front Belt Guard Cover
Size: 2.1/4" x 5"
Part Number: DC-995

DECAL "B"
"DANGER" Decal
Located on Inside of Back Belt Guard Cover
Size: 2.1/4" x 5"
Part Number: DC-994



DECAL "C"
"DANGER" Decal
Located on Unloading Tube near Head Plate
Size: 4" x 9"
Part Number: DC-834

DECAL "D"
"DANGER" Decal
Located on Unloading tube near Intake Guard
Size: 4.1/4" x 5.7/16"
Part Number: DC-455





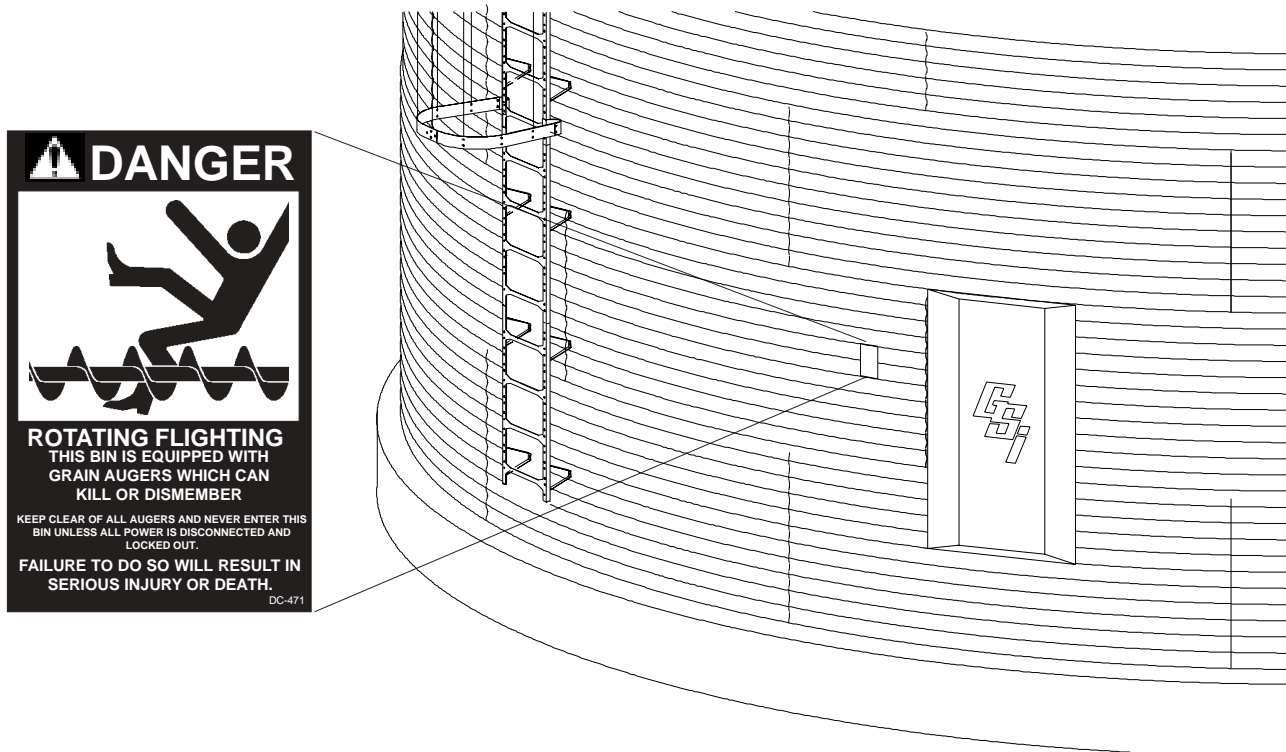
BIN SAFETY SIGN INSTRUCTION

DANGER Sign No. DC-471 was supplied with Grain Systems, Inc. bin unloading equipment. This safety sign should be applied to the side of the bin near the bin opening, so it will be viewed by people entering into the bin storage building. Do not cover any safety signs or any other signs that are already there.

If the safety sign location suggested are not in full view because of equipment modifications, other equipment in the area or any reason, then locate the safety sign in a more suitable location.

Be certain surface is clean, dry and free of dirt and oil. Peel paper backing from decals and stick into place. The adhesive backing will bond on contact.

Please remember, safety signs provide important safety information for persons working near bin unloading equipment that is in operation.



If the Safety Sign cannot be easily read for any reason or has been painted over, replace it immediately.

Additional Safety Signs may be obtained free of charge from a Grain Systems, Inc. Dealer, Distributor, or ordered from the factory.

Order SAFETY SIGN NO. DC-471



IMPROVEMENTS

IT IS THE PLAN OF GRAIN SYSTEMS, INC. TO IMPROVE ITS PRODUCTS WHENEVER POSSIBLE AND PRACTICAL TO DO SO. WE RESERVE THE RIGHT TO CHANGE, IMPROVE AND MODIFY PRODUCTS AT ANY TIME WITHOUT OBLIGATION TO MAKE CHANGES, IMPROVEMENTS AND MODIFICATIONS ON EQUIPMENT SOLD PREVIOUSLY.

SAFETY EQUIPMENT

IT IS IMPORTANT TO KEEP IN MIND THAT THE SAFETY SHIELDS AND GUARDS PROVIDE PROTECTION FOR PERSONNEL OPERATING AROUND AUGERS THAT ARE IN OPERATION. MAKE ABSOLUTELY SURE THAT ALL SAFETY SHIELDS AND GUARDS ARE INSTALLED AND MAINTAINED. IF ANY SHIELDS OR GUARDS ARE FOUND TO BE DAMAGED OR MISSING, CONTACT THE NEAREST GRAIN SYSTEMS, INC. DEALER TO OBTAIN THE CORRECT EQUIPMENT.

OPERATOR QUALIFICATIONS

USER/OPERATOR MUST BE COMPETENT AND EXPERIENCES TO OPERATE AUGER EQUIPMENT. ANYONE WHO WORKS WITH OR AROUND AUGERS MUST HAVE GOOD COMMON SENSE IN ORDER TO BE QUALIFIED. THESE PERSONS MUST ALSO KNOW AND MEET ALL OTHER QUALIFICATIONS, SUCH AS:

1. ANY PERSON WHO HAS NOT READ AND DOES NOT UNDERSTAND ALL OPERATION AND SAFETY PROCEDURES IS NOT QUALIFIED TO OPERATE ANY AUGER SYSTEMS.
2. CERTAIN REGULATIONS APPLY TO PERSONNEL OPERATING POWER MACHINERY. PERSONNEL UNDER THE AGE OF 18 YEARS MAY NOT OPERATE POWER MACHINERY, INCLUDING AUGERS. IT IS YOUR RESPONSIBILITY, AS OWNER OR SUPERVISOR, TO KNOW WHAT THESE REGULATIONS ARE IN YOUR AREA OR SITUATION.
3. UNQUALIFIED OR INCOMPETENT PERSONS ARE TO REMAIN OUT OF WORK AREA.
4. O.S.H.A. (Occupational Safety & Health Association) REGULATIONS STATE: "At the time of initial assignment and at least annually there after, the employer shall instruct every employee in the safe operation and servicing of all equipment with which the employee is, or will be involved." (Federal Occupational Safety & Health Standards for Agriculture. Subpart D, Section 19287.57 (a) (6)).



GENERAL SAFETY STATEMENTS

Grain Systems, Inc. principal concern is your safety and the safety of others associated with auger equipment. This manual was written with this thought in mind. We want to keep you as a customer. This manual is to help you understand safe operating procedures and some problems which may be encountered by the operator and other personnel.

As owner and/or operator, it is your responsibility to know what requirements, hazards and precautions exist and inform all personnel; associated with the equipment or in the area. Safety precautions may be required from these personnel. Avoid any alterations to the equipment. Such alterations may produce a very dangerous situation, where serious injury or death may occur.

SAFETY ALERT SYMBOL

The symbol shown below is used to call your attention to instructions concerning your personal safety. Watch for this symbol: it points out important safety precautions. It means "**ATTENTION**", "**WARNING**", "**CAUTION**". Read the message that follows and be cautious to the possibility of personal injury or death.

BE ALERT



WARNING

Personnel operating or working around an auger system should read this manual. This manual must be delivered with the equipment to its owner. Failing to read this manual and its safety instructions is a misuse of the equipment.

TO THE OWNER

Your new Auger has been designed and manufactured to give years of dependable service. The care and maintenance of this machine will greatly affect the satisfaction and service you will obtain. By observing the instructions and suggestions we have recommended, you should receive competent service for many years. If additional information or assistance should be required, please contact Grain Systems, Inc.

RECEIVING MERCHANDISE AND FILING CLAIMS

When receiving merchandise, it is important to check both the quantity of parts and their description with the packing list enclosed within each package. All claims for freight damage or shortage must be made by the consignee within 10 days from the date of the occurrence of freight damage. The consignee should accept the shipment after noting the damage or loss.



SIGN-OFF SHEET

As a requirement of OSHA, it is necessary for the employer to train the employee in the safe operating and safety procedures for this auger. We included this sign-off sheet for your convenience and personal record keeping. All unqualified persons are to **stay out** of the work area at **all** times. It is strongly recommended that another qualified person who knows the shut down procedure is in the area in the event of an emergency. A person who had not read this manual and understood all operating and safety instructions is not qualified to operate the machine.

[illegible]



GENERAL SAFETY PRECAUTIONS

We strongly recommend that all persons who will be operation or working around this equipment be trained in the proper operational and safety procedures required. We also recommend that all operators perform periodic reviews of those procedures. A sign off sheet has been provided for this practice (See page #5).

IMPORTANT: READ CAREFULLY BEFORE SERVICING OR REPAIRING!

UNTRAINED OPERATORS SUBJECT THEMSELVES AND OTHERS TO SERIOUS INJURY OR DEATH!

PERSONNEL SAFETY:

Keep children and other unqualified personnel out of the working area at all times. NEVER start equipment until all persons are clear of the equipment.

Initially and periodically thereafter, insist all operating personnel review the safety sections of this manual.

Any worker who is tired and/or under pressure is more apt to have an accident. Give extra breaks and/or varied jobs to all workers. If necessary, delay operation of this equipment until the operator is adequately rested.

Keep hair, loosed clothing, shoe strings, etc. away from rotating and moving parts. **Don't** wear loose fitting clothing when working around augers, etc.

NEVER operate or work on machinery if intoxicated or under the influence of liquor or drugs.

EQUIPMENT MAINTENANCE & REPAIR:

ALWAYS shut off and disconnect all power before adjusting, servicing or cleaning.

Use suitable precautionary measures when repairing or replacing equipment parts. (Block jacks, tires, etc.)

Make sure all safety signs are readable and tightly attached. If necessary replace them by calling Grain Systems Inc. for a free replacement.

Ensure that all electric motors, etc. are operating at the proper speed.

Maintain proper adjustments on any chains and belts.



EQUIPMENT MAINTENANCE & REPAIR (CON'T.)

Mount controls for any electric motors at a convenient place, which is a safe distance from the machine. Make sure controls are readily accessible in the event of an emergency.

Make sure any electrical wiring is not frayed or cracked and meets proper wiring codes.

Check winches and lifting devices periodically for signs of wear. Make sure all components are in good working condition before using.

Check the auger flighting at least prior to use to make sure it is in good working condition. Grease bearing at least two (2) times a season if needed.

GENERAL SAFETY PRECAUTIONS (Con't.)

OPERATIONAL SAFETY:

NEVER allow anyone inside bin, truck or wagon which is being unloaded by an auger or conveyor. Flowing grain can trap and suffocate in seconds.

Make sure someone is nearby who is aware of the proper shutdown sequence in the event of an accident or emergency. **NEVER** work alone. **THINK** - Never act impulsively around equipment.

Make sure all equipment is locked in position before operating.

Make sure all guards and shields are in place before operation. **DO NOT** operate without guards and shields properly attached.

Keep hands and feet away from the auger intake and other moving parts **NEVER** attempt to assist machinery operation or to remove trash from equipment while in operation.

Keep area around intake free of obstacles (electrical cords, blocks, etc.) that might trip workers.

NEVER drive, stand or walk under auger. Take care to avoid hitting auger when positioning load.

Use ample overhead lights after dark to light work area.

Always lock out all power to equipment after finishing unloading bin.

IMPORTANT: READ CAREFULLY BEFORE OPERATING!



OPERATING INSTRUCTIONS

UTILITY AUGERS ONLY

Utility Augers are primarily designed as portable units. These augers are not designed for permanent installations. A utility auger has many different uses. Since it is not sold with an undercarriage or other method of support, it must be supported by the user satisfactorily for the specific job. Always be sure to fasten the discharge and intake end in place so the auger will stay in place throughout operation.

BULK TANK AUGER

Bulk Tank Augers are primarily designed for use in bulk tank unloading augers only. These units are not furnished with intake guards. **THEY ARE TO BE USED ONLY IN A BULK TANK.** If removed with the intention of using as a utility auger, an intake guard is required, order from parts page, and install prior to use.

Since it is not sold with an undercarriage or other method of support, it must be supported by the user satisfactorily for the specific job. Always be sure to fasten the discharge and intake end in place so the auger will stay in place throughout operation.



BEFORE OPERATING AUGERS BE SURE ALL PERSONNEL ARE CLEAR.

START UP AND BREAK IN INFORMATION

Before adding power it is essential to inspect the drive unit and know how and where to shut down the unit in case of an emergency. Have one person in a position to where they can monitor the operation of the equipment during operation.

Any auger should go through a "break-in" period, whether new or being idle of a season. The "break-in" period is to polish the auger and tube to make surfaces smooth. The auger should be run at partial capacity until several hundred bushels of grain have been augered through. After the auger and tube are polished it can be run at full capacity.

Never operate the auger empty for any length of time, for excessive wear will result. If at all possible, do not stop or start the auger while loaded, especially before the auger and tube are well polished, this may cause auger to "bind-up".



The operator should be aware of any unusual vibration or noises during the initial start up and break in period. All safety shields and guards are to remain in place. Keep hands, feet and clothing away from rotating and moving parts.

For efficient operation of the equipment, auger speed is very important.

1. Extreme wear result if auger speed is in excess of what is recommended.
2. Auger will load up or over load if auger speed is too slow. Over load of the auger will cause motor to over load and higher torque will be required to turn auger, which in turn may cause damage to the auger.

OPERATING CAPACITIES

The results of capacity can alter greatly under varying conditions. Moisture content, different commodities, amount of foreign matter, and speeds all play a part in the performance of the auger. 25% moisture may cut capacity by as much as 40% under some conditions.



FULL LOAD OPERATING PROCEDURES

It is good practice to visually inspect the auger periodically during the actual operation. You should be alert for unusual vibrations, noises and the loosening of any fasteners.



Observe work area restrictions. Make certain everyone is clear before operating the machine.

OPERATING INSTRUCTIONS

NORMAL SHUTDOWN

Before stopping the unit, make certain that hopper and inclined tube are empty. Never leave the work area without locking out the power supply.

EMERGENCY SHUTDOWN

If the auger has to be shut down while in full operation, disconnect and lockout the power source. Never attempt to restart when auger tube is full.

NOTE: Damage may occur to the auger if attempting to start the auger while unit is under load.

This type damage is considered abuse to the equipment. Reconnect power source and clear auger gradually.



Stop motor and lockout power source when servicing and/or adjusting your equipment!

ELECTRIC MOTOR DRIVES

Suggested horse power is listed in chart on next page. 1750 R.P.M. electric motors and controls shall be installed by a qualified electrician and must meet the standards set by the National Electrical Code and all local and state codes. Reset and motor starting controls shall be located where the operator has unrestricted access to the controls.

Magnetic starter should be used for your protection and the motors. This is to assure the operator of accidental restart caused by power interruption, conductor fault, low voltage, circuit interruption or thermal overload protection, make sure this type motor has a manual reset.



HORSEPOWER INFORMATION FOR ELECTRIC MOTOR DRIVE

This chart is a suggested horsepower requirement for standard 4" Utility Augers.

Length:	11'	15'	20'
Motor H.P.	1/2	1/2	3/4

Horsepower recommendations are for augering reasonably dry grain at different angles. Grain with 15% moisture and above may require more horsepower if maximum capacity is to be maintained. Use a 2.5" to 3.0" motor pulley for a recommended auger speed of 550 to 650 R.P.M. Motor pulley not furnished. Excessive wear will result if auger speed is in excess of 700 R.P.M. and auger load up will occur if auger speed is less than 500 R.P.M. or flow gate is required.

Auger speeds in excess of 750 R.P.M. should be avoided as excessive wear will result. Auger speed below 450 R.P.M. require a flow control to restrict intake to the auger. High torque is required to turn the flighting if it is permitted to "load up" at low speed and damage to the auger can result. An optional control gate is available for this purpose.



Disconnect power before resetting motor overloads. Make certain electric motors are grounded.



LOCKOUT

Augers must be stopped and power source turned off when operator is:

1. Away from work area.
2. Servicing or adjusting equipment.

Precaution should be made to prevent anyone from entering work area

STORAGE PREPARATION

1. Check all guards and shields making sure they are in place, secured and functional.
2. Replace any safety signs or warning decals that are worn, missing or illegible. These items are listed in the front of this manual and may be obtained from Grain Systems, Inc. Dealer or from the factory.
3. Check to insure all fasteners are tight.



TROUBLE SHOOTING

PROBLEM	POSSIBLE CAUSE
AUGER VIBRATION	Drive belt may be overtightened, putting head stub and flight in a bind. Damage can occur to the auger flighting, thus causing noise. Damage usually occurs because of foreign material having been run through the auger. It may be necessary to remove the flighting for inspection.
LOW CAPACITY	The auger may not be getting enough grain. Check to make sure the intake has not bridged over, restricting flow. The exposed flighting at the auger intake should be covered with grain to achieve maximum capacity. Check auger speed. Speeds slower than the recommended speed will result in low capacity.
AUGER PLUGS	The auger may be getting too much grain, causing "jamming" inside the housing. The motor may be too small or wired improperly. If the motor is a newer lightweight aluminum type, the next larger size should be considered. If wet grain or other hard-to-move material is being augered, use a larger size motor than recommended for normal use. Is the auger free of any foreign material, such as sacks, tarp corners, etc.? A plug of the discharge end will cause an auger plug.



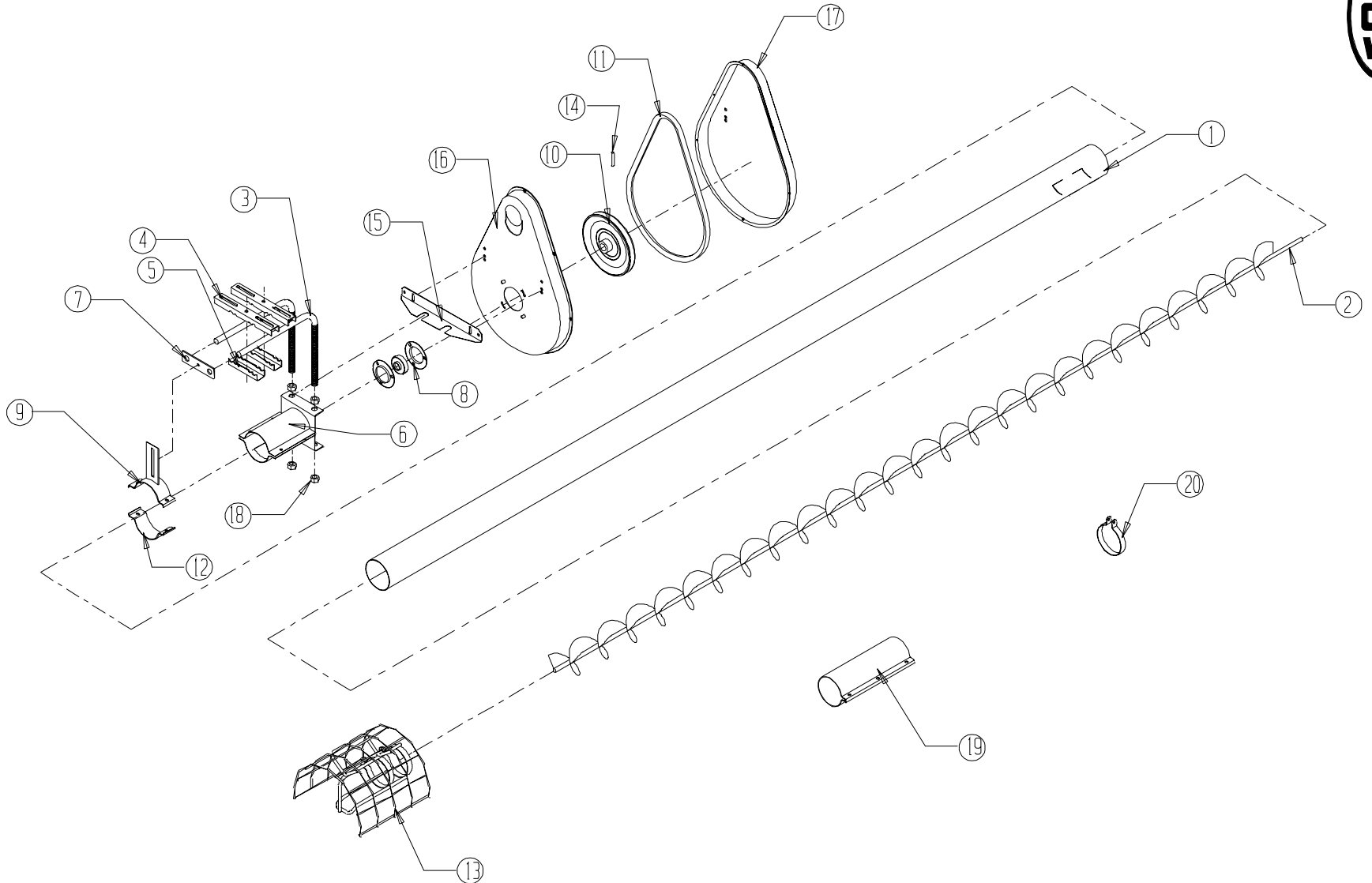
ASSEMBLY INSTRUCTIONS FOR G.S.I. 4" UTILITY & BULK TANK AUGERS

1. Bolt head bearing #8 to head plate assembly #6 using three (3) 5/16" x 3/4" carriage bolts with lockwashers and nuts. Bearing lock collar must be on front of bearing next to pulley.
2. Attach motor mount rods #3 into head plate assembly #6 with belt guard mounting angle #15 under top nuts. Note the position of the angle.
3. Slide head plate assembly over discharge end of auger housing #1. Bolt on head plate assembly using four (4) 1/4" x 1.1/4" hex head bolts and nuts.
4. Attach belt guard back cover #16 to belt guard mounting angle #15 using two (2) 5/16" x 3/4" bolts, flatwashers and nuts.
NOTE: Leave bolts loose until motor, pulley and belts are installed.
5. Slide flighting shaft through head bearing enough to install 8" pulley on shaft with 5/16" x 2" roll pin #14. **NOTE:** Roll pin side of pulley must be next to bearing lock collar. Locate head pulley #10 in as close as possible to head bearing #8. Tighten lock collar on bearing.
6. Position motor straps #4 and motor clips #5 on motor mounting rods and clamp together with two (2) 5/16" x 1.1/2" carriage bolts and nuts. Install electric motor on motor mount and pulley on motor (motor and pulley not furnished with unloading auger). Install A-38 belts, tighten belts and lock in place with 5/8" nuts.
7. **UTILITY AUGER ONLY:** Slide intake guard #13 onto intake end of auger housing #1. Clamp assembly to auger housing #1 with two (2) 1/4" x 1.1/4" hex head bolts and nuts.
8. Place support strap #9 on auger housing #1 directly behind head plate, clamp in place with half band #12 using two (2) 1/4" x 1.1/2" hex head bolts and nuts. Slide rod support strap #7 over ends of 5/8" motor mount rods and attach to support strap with one (1) 5/16" x 3/4" carriage bolt, flatwasher, lockwasher and nut.
9. Adjust belt guard back cover so that the belts and pulleys will clear the belt guard front cover when it is installed. Tighten bolts securing the back cover to the mounting angle.
10. Attach belt guard front cover #17 to belt guard back cover #16 using six (6) #10 x 3/4" self drilling screws.
11. **BULK TANK AUGERS ONLY:** Fasten full band #20 to auger housing using a 5/16" x 1.1/2" hex head bolt and nut. A cable can be used to support the bulk tank auger.
12. If unit has trouble starting under load, cut down on amount of exposed flight on auger intake.

NOTE: Slide extension flighting assembly into extension housing assembly. Bolt flighting assemblies together so that the ends of the flighting are approximately a half turn apart using 5/16" x 1.1/2" hex head bolts and lock nuts. Connect auger housing together with connecting band. Be sure auger housings are tight together. Use bolts already in connecting band. The connecting band should be half on each housing assembly.



4" UTILITY & BULK TANK AUGER ASSEMBLY



NOTE: ITEM NUMBER 14 MAY BE SUBSTITUTED
WITH BUNDLE NUMBER BLK-10414

4" UTILITY & BULK TANK AUGER PART LIST



4" Utility & Bulk Feed Tank Augers

REF. NO.	PART NO.	DESCRIPTION	QUANT.
1	G4300A	AUGER HOUSING - 11' (10'-6" LONG)	1
1	G4301A	AUGER HOUSING - 15' (14'-6" LONG)	1
1	G4302A	AUGER HOUSING - 21' (19'-6" LONG)	1
2	G6977A1-A	AUGER WELDMENT - 11' (11'-2.1/2" LONG)	1
2	G6977A1-B	AUGER WELDMENT - 15' (15'-2.1/2" LONG)	1
2	G6977A1-C	AUGER WELDMENT - 20' (20'-2.1/2" LONG)	1
3	G3000A1	MOTOR MOUNT ROD	2
4	G5024A1	MOTOR MOUNT STRAP (TOP SECTION)	2
5	G5025A1	MOTOR MOUNT CLIP (BOTTOM SECTION)	2
6	G6004A1	HEAD PLATE WELDMENT	1
7	G5012A1	ROD SUPPORT	1
8	D02-0002	FLANGETTE BEARING 1"	1
9	G6049A1	SUPPORT STRAP WELDMENT	1
10	G40182	1 B GROOVE SHEAVE 8" O.D. WITH 1" BORE	1
11	G40105	A-38 BELT	1
12	G5261A1	HLAF BAND (2" WIDE)	1
*13	G4318A	INTAKE GUARD (UTILITY AUGER ONLY)	1
14	S-4377	5/16" X 2" ROLL PIN	1
15	GC00155	BELT GUARD MOUNTING ANGLE	1
16	FLX-2987	BELT GUARD BACK COVER	1
17	FLX-2986	BELT GUARD FRONT COVER	1
18	S-4110	5/8" UNC HEX NUT GRADE 5	4
*19	G4162A	CONNECTING BAND (BULK TANK AUGER ONLY)	1
*20	GC00005	4" FULL BAND (BULK TANK AUGER ONLY)	1



THE GSI GROUP, INC. ("GSI") WARRANTS ALL PRODUCTS MANUFACTURED BY GSI TO BE FREE OF DEFECTS IN MATERIAL AND WORKMANSHIP UNDER NORMAL USAGE AND CONDITIONS FOR A PERIOD OF 12 MONTHS AFTER RETAIL SALE TO THE ORIGINAL END USER OF SUCH PRODUCTS. GSI'S ONLY OBLIGATION IS, AND PURCHASER'S SOLE REMEDY SHALL BE FOR GSI, TO REPAIR OR REPLACE, AT GSI'S OPTION AND EXPENSE, PRODUCTS THAT, IN GSI'S SOLE JUDGEMENT, CONTAIN A MATERIAL DEFECT DUE TO MATERIALS OR WORKMANSHIP. ALL DELIVERY AND SHIPMENT CHARGES TO AND FROM GSI'S FACTORY WILL BE PURCHASER'S RESPONSIBILITY. EXPENSES INCURRED BY OR ON BEHALF OF THE PURCHASER WITHOUT PRIOR WRITTEN AUTHORIZATION FROM AN AUTHORIZED EMPLOYEE OF GSI SHALL BE THE SOLE RESPONSIBILITY OF THE PURCHASER.

EXCEPT FOR THE ABOVE STATED EXPRESS LIMITED WARRANTIES, GSI MAKES NO WARRANTY OF ANY KIND, EXPRESSED OR IMPLIED, INCLUDING, WITHOUT LIMITATION, WARRANTIES OF MERCHANTABILITY OR FITNESS FOR A PARTICULAR PURPOSE OR USE IN CONNECTION WITH (I) PRODUCT MANUFACTURED OR SOLD BY GSI OR (II) ANY ADVICE, INSTRUCTION, RECOMMENDATION OR SUGGESTION PROVIDED BY AN AGENT, REPRESENTATIVE OR EMPLOYEE OF GSI REGARDING OR RELATED TO THE CONFIGURATION, INSTALLATION, LAYOUT, SUITABILITY FOR A PARTICULAR PURPOSE, OR DESIGN OF SUCH PRODUCT OR PRODUCTS.

IN NO EVENT SHALL GSI BE LIABLE FOR ANY DIRECT, INDIRECT, INCIDENTAL OR CONSEQUENTIAL DAMAGES, INCLUDING, WITHOUT LIMITATION, LOSS OF ANTICIPATED PROFITS OR BENEFITS. PURCHASER'S SOLE AND EXCLUSIVE REMEDY SHALL BE LIMITED TO THAT STATED ABOVE, WHICH SHALL NOT EXCEED THE AMOUNT PAID FOR THE PRODUCT PURCHASED. THIS WARRANTY IS NOT TRANSFERRABLE AND APPLIES ONLY TO THE ORIGINAL PURCHASER. GSI SHALL HAVE NO OBLIGATION OR RESPONSIBILITY FOR ANY REPRESENTATIVE OR WARRANTIES MADE BY OR ON BEHALF OF ANY DEALER, AGENT OR DISTRIBUTOR OF GSI.

GSI ASSUMES NO RESPONSIBILITY FOR FIELD MODIFICATIONS OR ERECTION DEFECTS WHICH CREATE STRUCTURAL OR STORAGE QUALITY PROBLEMS. MODIFICATIONS TO THE PRODUCT NOT SPECIFICALLY COVERED BY THE CONTENTS OF THIS MANUAL WILL NULLIFY ANY PRODUCT WARRANTY THAT MIGHT HAVE BEEN OTHERWISE AVAILABLE.

THE FOREGOING WARRANTY SHALL NOT COVER PRODUCTS OR PARTS WHICH HAVE BEEN DAMAGED BY NEGLIGENT USE, MISUSE, ALTERATION OR ACCIDENT. THIS WARRANTY COVERS ONLY PRODUCTS MANUFACTURED BY GSI., THIS WARRANTY IS EXCLUSIVE AND IN LIEU OF ALL OTHER WARRANTIES EXPRESS OR IMPLIED. GSI RESERVES THE RIGHT TO MAKE DESIGN OR SPECIFICATION CHANGES AT ANY TIME.

PRIOR TO INSTALLATION, PURCHASER HAS THE RESPONSIBILITY TO RESEARCH AND COMPLY WITH ALL FEDERAL, STATE AND LOCAL CODES WHICH MAY APPLY TO THE LOCATION AND INSTALLATION.

Major Revisions From Last Printing Are Listed Below:

Added Additional Safety Decals.

a division of

THE GSI GROUP

