

REDUCTION SWEEP WHEEL

This enclosed chain drive sweep wheel is designed to attach onto a 6", 8" or 10" Bin Sweep.

ASSEMBLY INSTRUCTIONS

1. Remove the present outside wheel and shaft or sweep walker from the last sweep flight section. Also remove the last bearing stand assembly from the sweep back shield. These items can be set aside. They will not be required after the reduction sweep wheel is installed, except for some of the nuts and bolts.
2. Place the flight bushing (1) over the sweep wheel shaft (2) and install into the sweep flight (3). (See Figure 1.) A slot has been provided in the wheel shaft to allow for adjusting the fit of the wheel to the back shield. Do not bolt the flight connection at this time.
3. Using the 3/8" x 1-3/4" hex head capscrews provided with 3/8" washers, lockwashers and nuts. Connect the wheel mounting bracket (4) to the sweep back shield (5) using enough spacer plates (6, 7, and 8) to bring a wheel shaft bolt hole into alignment with the flight shaft hole. Reinstall the flight connecting bolt with nut.
4. Before using the reduction wheel, pump approximately seven (7) ounces of grease into the enclosed portion through the zerk provided. Thereafter, add about 2 ounces at the beginning of each use season.
5. Using a portion of the sweep auger is recommended when starting to sweep unload a bin, particularly a large bin. You may choose to only assemble one or two sections of the sweep flight and back shield to the reduction sweep wheel.

Consult the operators manual provided with the sweep auger for operating instructions.

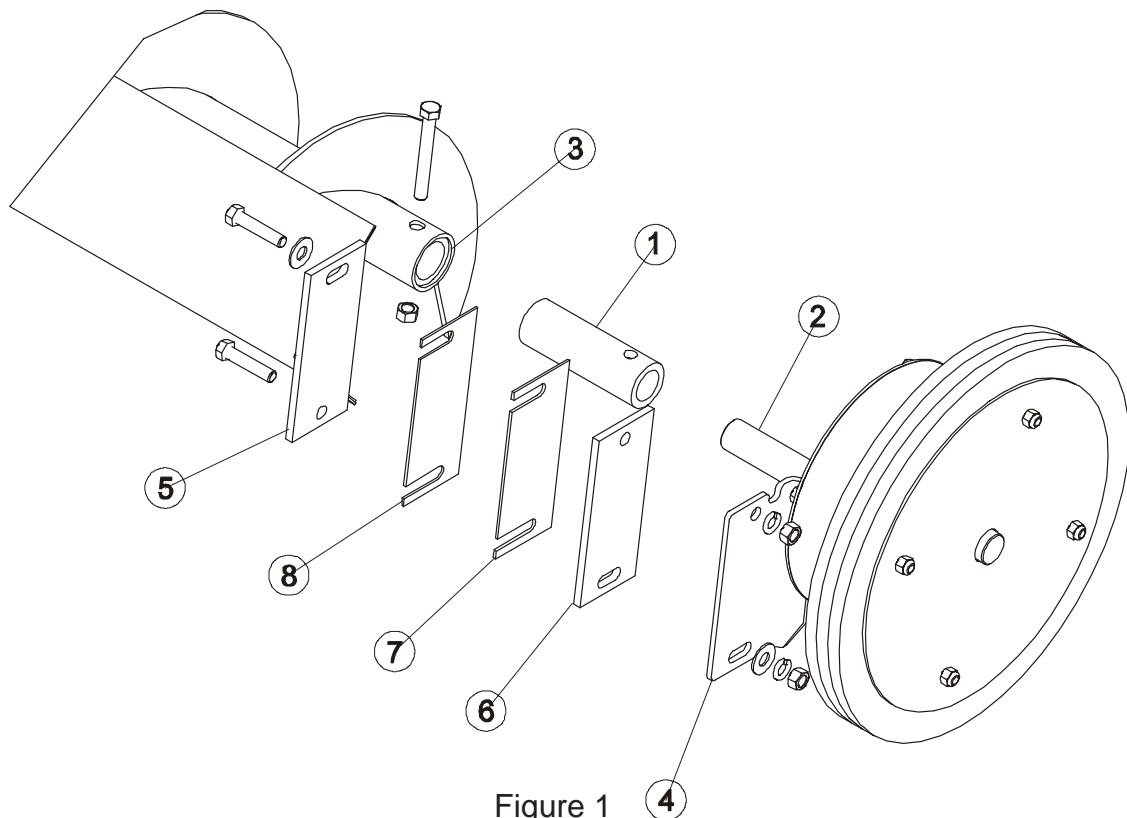
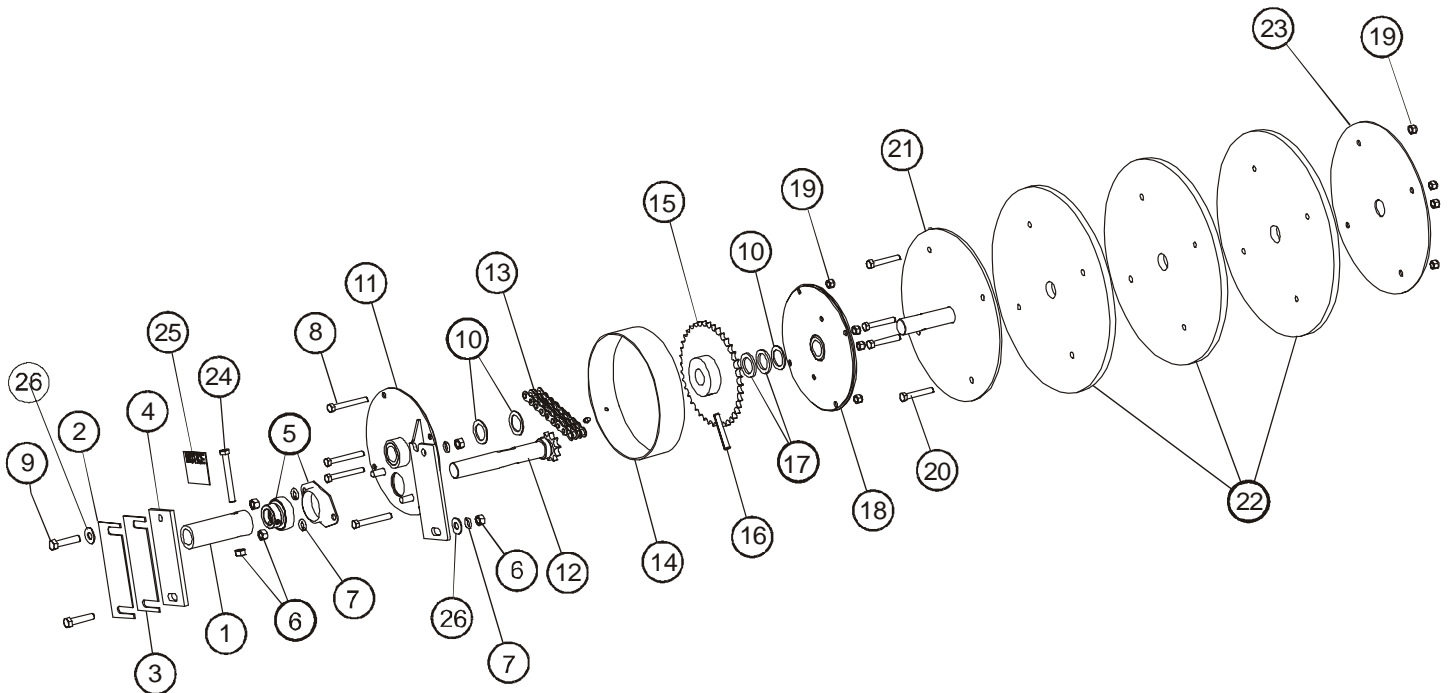


Figure 1

REDUCTION SWEEP WHEEL



Reduction Sweep Wheel Parts		
Ref #	Part Number	Description
1	GK4206	Bushing 1" I.D. x 1-1/2" O.D. x 4-3/8" Long
2	GK4224	Spacer Plate 1/4"
3	GK4225	Spacer Plate 12 Ga.
4	GK4226	Spacer Plate 14 Ga.
5	GK4232	Two-Hole Flange Bearing 1" Bore
6	S-456	3/8" Hex Nut
7	S-1054	3/8" Lock Washer
8	S-7076	5/16" NC x 2-1/2" Hex Head Capscrew
9	S-3727	3/8" NC x 1-3/4" Hex Head Capscrew
10	GK4210	1" Nominal x 14 Ga. Washer
11	GK6022	Inner Drive Housing w/ Bushing
--	GK1070	Bronze Bushing only
12	GK6022	Sprocket/Shaft Weldment
13	GK4233	#40 Double Roller Chain w/ Link - 40 Pitch
14	GK4215	Housing ring with 1/4" NPT zerk
15	GK4234	Sprocket #40 x 40 Tooth
16	GK4377	5/16" x 2" Long Roll Pin
17	GK4211	1" Nominal x 10 Ga. Washer
18	GK4223	Outer Drive Housing
19	S-7382	5/16" Nylock Nut
20	S-7329	5/16" x 2" Hex Head Capscrew
21	GK4242	Inner Disk Plate
22	GK4241	13" O.D. Rubber Disk
23	GK4240	Outer Disk Plate
24	S-7249	3/8" x 3" ZN Gr5 HHCS Bolt
25	DC-1687	Notice: Shipped without Grease.
26	S-248	3/8" Flat Washer USS YDP Gr2