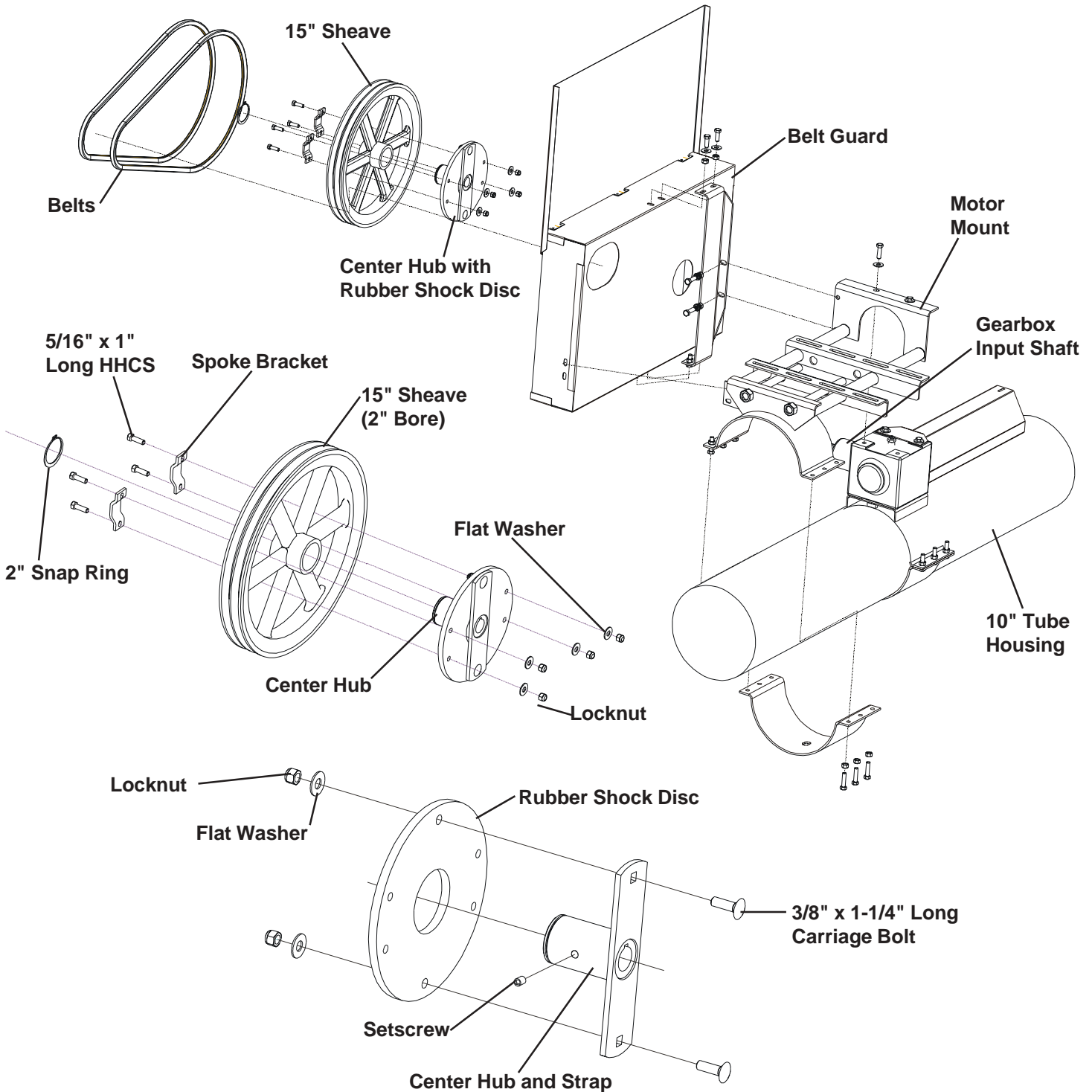


# ELECTRIC DRIVE 15" SHOCK ABSORBER SHEAVE

The shock absorber sheave is designed to fit onto the gearbox input shaft. Remove the belts and standard 15" sheave from the gearbox input shaft. **DO NOT REMOVE THE BELT GUARD.**



**DANGER**

**ALWAYS KEEP ALL SAFETY SHIELDS AND DEVICES IN PLACE.**

# ELECTRIC DRIVE 15" SHOCK ABSORBER SHEAVE

STEP 1: Slide the rubber shock disc over center hub and bolt to the strap with two 3/8" x 1-1/4" long carriage bolts, flat washer and locknuts. Slide the center hub all the way onto gearbox shaft. Tighten setscrew to secure the center hub to the gearbox shaft.


NOTE

The setscrew must not extend past the outer surface of the center hub or the 15" sheave will not slide over the center hub.

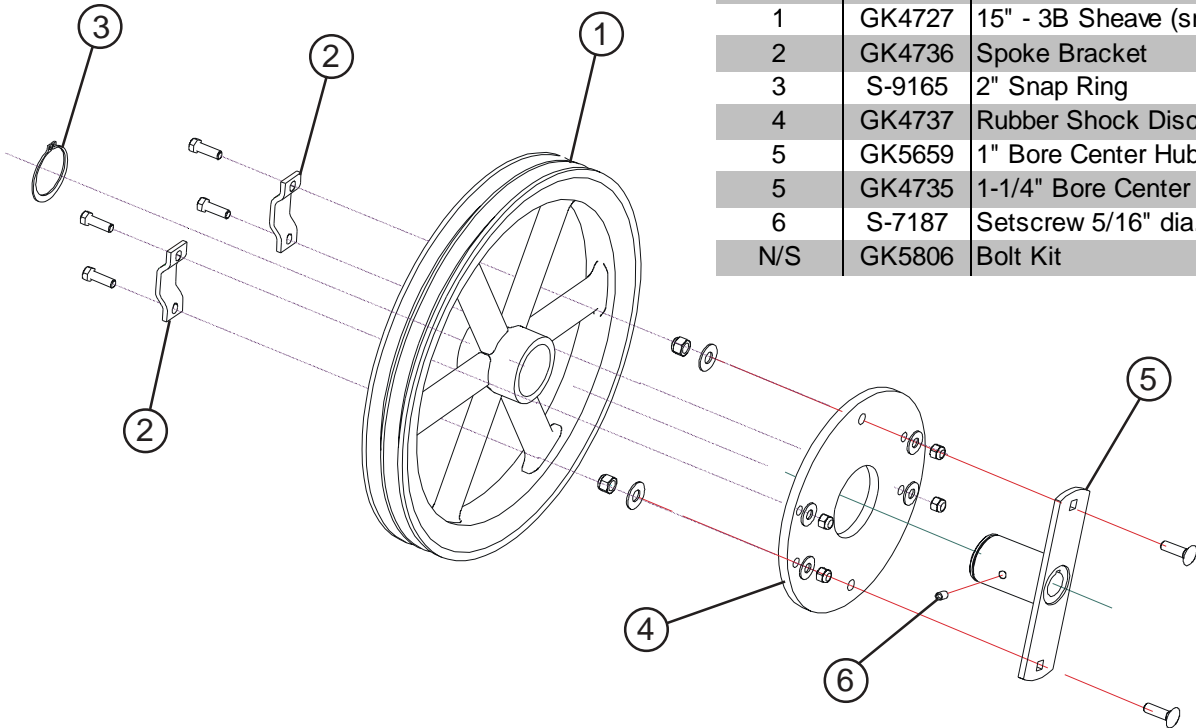
STEP 2: Install the 15" sheave onto the center hub with the short side of the pulley hub against the rubber shock disc. Align motor pulley with 15" sheave. Secure the 15" sheave to the center hub by installing the 2" snap ring. Use two spoke brackets and fasten the 15" sheave to the rubber shock disc with four 5/16" x 1" long HHCS, flat washers and locknuts.

STEP 3: Install belts on pulleys and tighten.

STEP 4: Close belt guard door and latch it shut.

 DANGER

DO NOT OPERATE THE UNIT AT ANY TIME WITH THE BELT GUARD DOOR OPEN.



PARTS LIST		
Ref #	Part #	Description
1	GK5658	15" - 2B Sheave (smooth 2" bore)
1	GK4727	15" - 3B Sheave (smooth 2" bore)
2	GK4736	Spoke Bracket
3	S-9165	2" Snap Ring
4	GK4737	Rubber Shock Disc (8" dia.)
5	GK5659	1" Bore Center Hub with Strap
5	GK4735	1-1/4" Bore Center Hub with strap
6	S-7187	Setscrew 5/16" dia. x 5/16" Long
N/S	GK5806	Bolt Kit