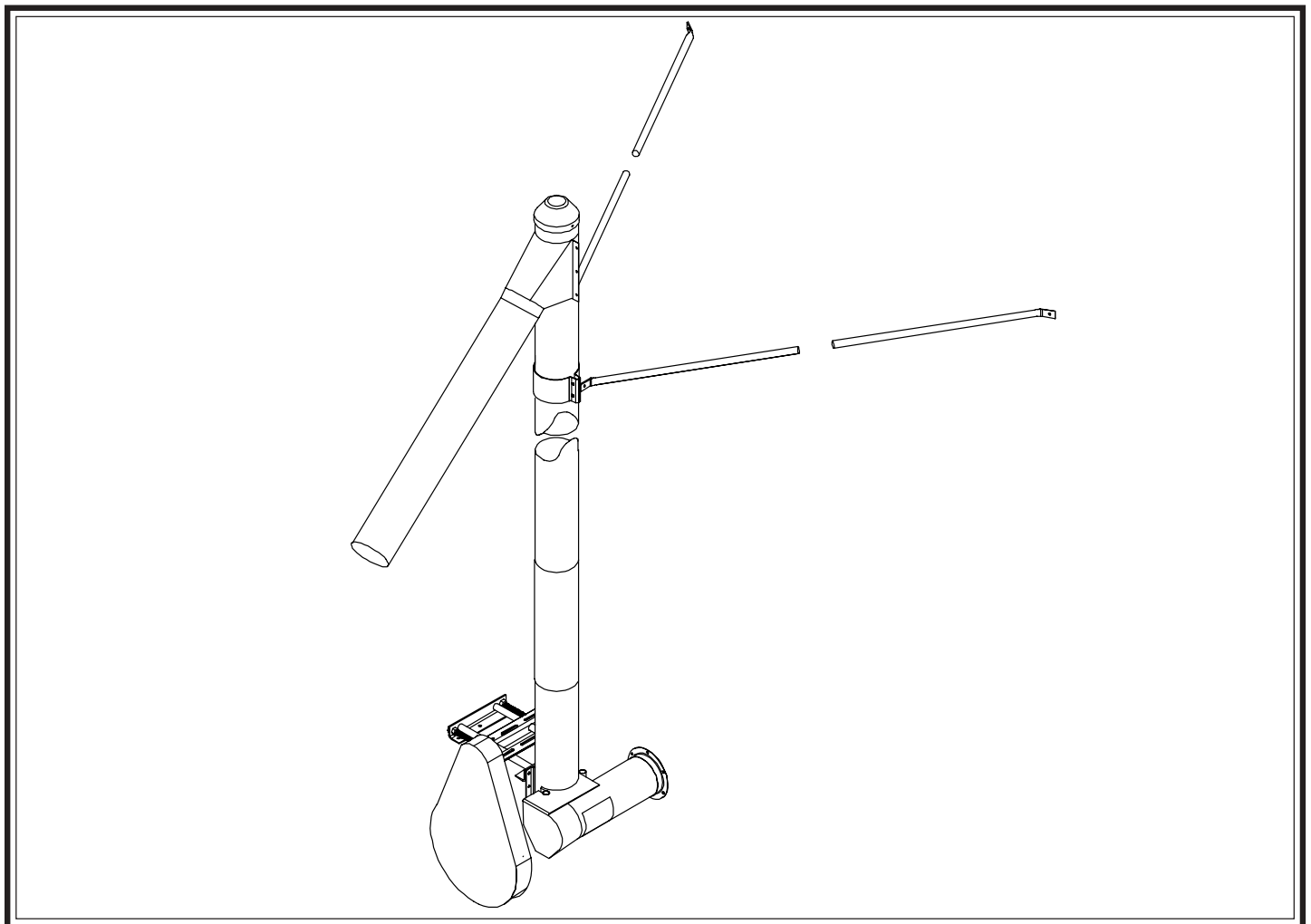


# 6", 8" and 10" Vertical Bin Unload Auger

## *Standard and Powerhead Installation & Operation Manual*



Personnel operating or working around this equipment should read this manual. This manual must be delivered with equipment to its owner. Failure to read this manual and its safety instructions is a misuse of the equipment. Any misuse of the equipment may void the warranty.

1.	Table of Contents.....	i
2.	Safety 1st.....	ii
3.	Introduction.....	1
4.	Safety.....	3
5.	Assembly.....	10
6.	Startup.....	14
7.	Operation.....	16
8.	Shutdown.....	17
9.	Maintenance.....	19
10.	Troubleshooting.....	20
11.	Parts List.....	21
12.	Warranty	

# ***SAFETY* 1<sup>st</sup>**

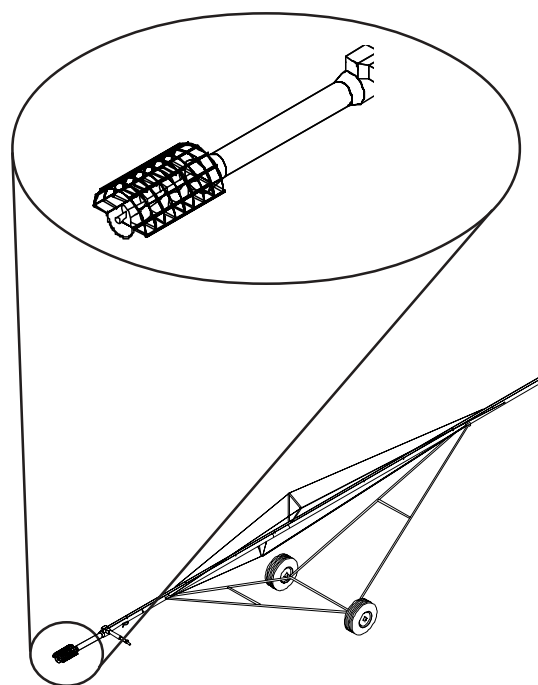
Our equipment is built to provide many years of dependable service to our customers through durable craftsmanship.

One of the most important principles of our engineering staff is ***SAFETY 1<sup>st</sup>*** design throughout all product lines. To us, safety is NO ACCIDENT!

With this in mind, the company is implementing its ***SAFETY 1<sup>st</sup>*** program. Should you ever need guards, shields, safety decals or owner/operator manuals, simply contact us, and we will supply you with them **FREE OF CHARGE!**

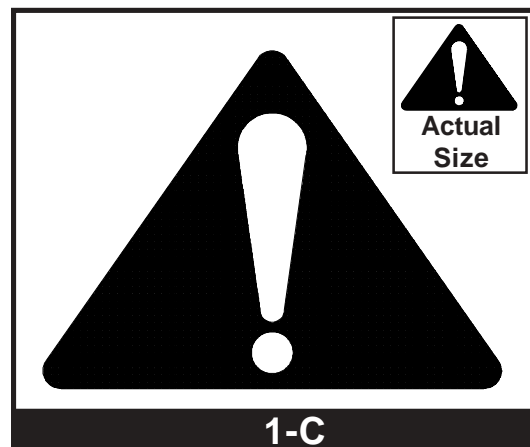
While it is our main goal to be the world leader in auger manufacturing, it is always our first priority to keep our customers safe.

*Replace missing guards and shields*  
**FREE OF CHARGE!**



## 1. General Safety Statements.

- A. The manufacturer's principle concern is your safety and the safety of others associated with grain handling equipment. We want to keep you as a customer. This manual is to help you understand safe operating procedures and some problems which may be encountered by the operator and other personnel.
- B. As owner and/or operator, it is your responsibility to know what requirements, hazards and precautions exist, and to inform all personnel associated with the equipment or in the area. Safety precautions may be required from the personnel. Avoid any alterations to the equipment. Such alterations may produce a very dangerous situation, where **SERIOUS INJURY** or **DEATH** may occur.
- C. This symbol is used to call attention to instructions concerning your personal safety. Watch for this symbol; it points out important safety precautions. It means "ATTENTION", "WARNING", "CAUTION", and "DANGER". Read the message that follows, and be cautious to the possibility of personal injury or death.
- D. This equipment shall be installed in accordance with the current installation codes and applicable regulations which should be carefully followed in all cases. Authorities having jurisdiction should be consulted before installations are made.



## 1. General Safety Statements (cont.)

- E. Untrained operators subject themselves and others to SERIOUS INJURY or DEATH. NEVER allow untrained personnel to operate this equipment.
- F. Keep children and other unqualified personnel out of the working area at ALL times.
- G. NEVER start equipment until ALL persons are clear of the work area.
- H. Be sure ALL operators are adequately rested and prepared to perform ALL functions of operating this equipment.
- I. Keep hair, loose clothing, and shoestrings away from rotating and moving parts. NEVER wear loose fitting clothing when working around augers.
- J. NEVER allow any person intoxicated or under the influence of alcohol or drugs to operate the equipment.
- K. NEVER allow anyone inside a bin, truck or wagon which is being unloaded by an auger or conveyor. Flowing grain can trap and suffocate in seconds.
- L. Make sure someone is nearby who is aware of the proper shutdown sequence in the event of an accident or emergency.
- M. NEVER work alone.
- N. ALWAYS think before acting. NEVER act impulsively around the equipment.
- O. Make sure ALL equipment is locked in position before operating.
- P. Keep hands and feet away from the auger intake and other moving parts.
- Q. NEVER attempt to assist machinery operation or to remove trash from equipment while in operation.

## 1. General Safety Statements (cont.)

- R. NEVER drive, stand or walk under the equipment.
- S. Use caution not to hit the auger when positioning the load.
- T. Use ample overhead lighting after sunset to light the work area.
- U. ALWAYS lockout ALL power to the equipment when finished unloading a bin.
- V. Keep area around intake free of obstacles such as electrical cords, blocks, etc. that might trip workers.

## 2. Emergency Shutdown Sequence.

- A. In an emergency, shutdown the power source.

## 3. Pinch Points.



**A pinch point is any place on the equipment which can injure an operator.**

- A. Components of this equipment have sharp edges which can scrape and/or cut an operator.
- B. A moving auger can sever an operator's limbs or even kill.

## 4. Shields and Guards.

- A. ALWAYS keep belt guards in place during operation.

## 5. Personal Protective Equipment.

- A. The proper personal protective equipment should be worn at ALL times by anyone in the work area.



5-B

- B. ALWAYS wear safety glasses when in the work area.



5-C

- C. The operator should NEVER wear jewelry.

- D. Loose clothing should not be worn. Any clothing that becomes loosened should be tucked in tightly.



5-D, E

- E. Loose shoe strings or dangling shoe strings should be tucked in.

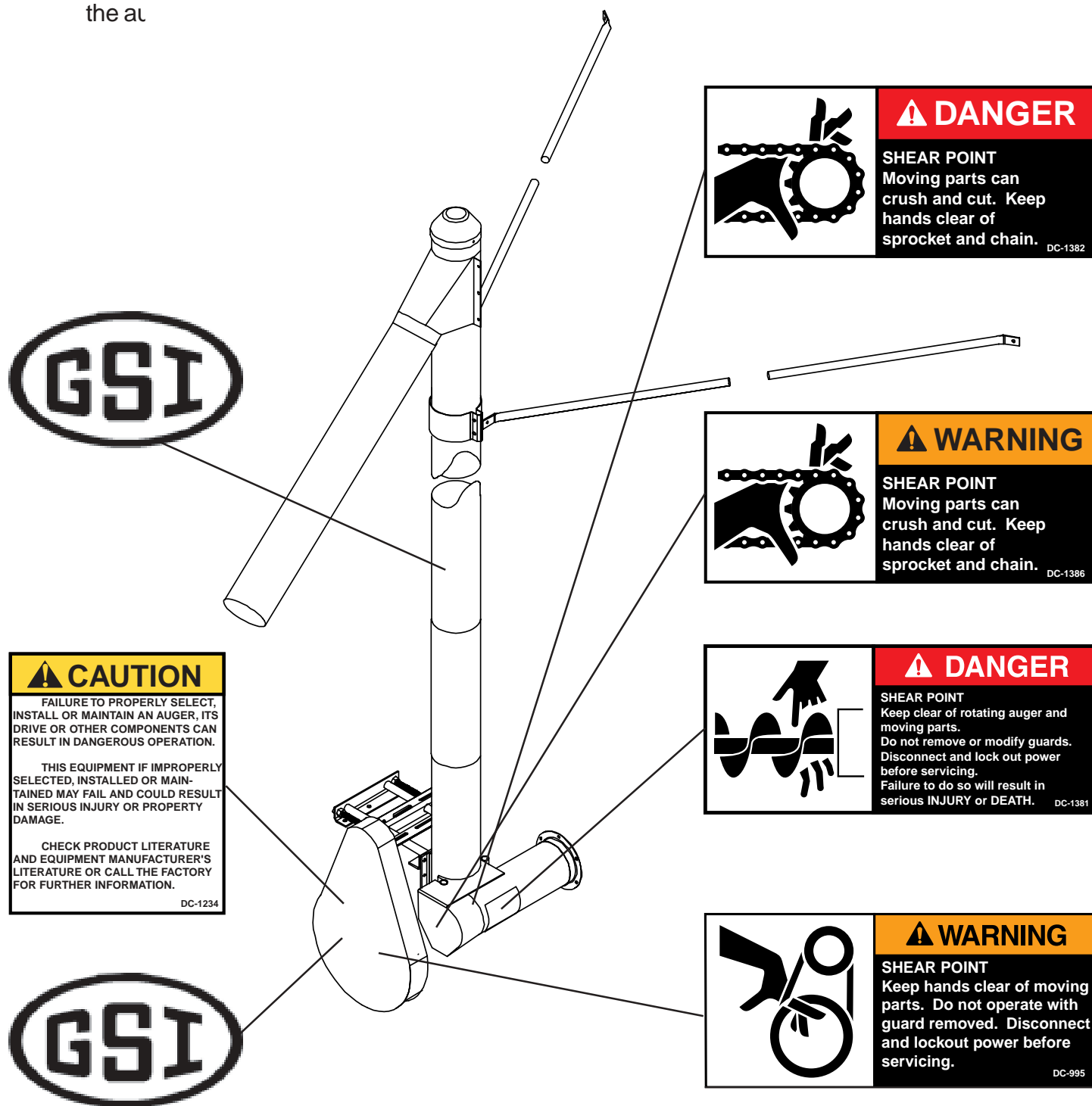
- F. Long hair should be tied up and/or back.



5-F

## 6. Decals.

- A. The images below show the location of the decals and safety signs which should appear on the at



Please remember safety signs provide important safety information for people working near bin unloading equipment that is in operation. Any safety signs that are worn, missing, illegible or painted over should be replaced immediately. Obtain **FREE** replacements by contacting your dealer.

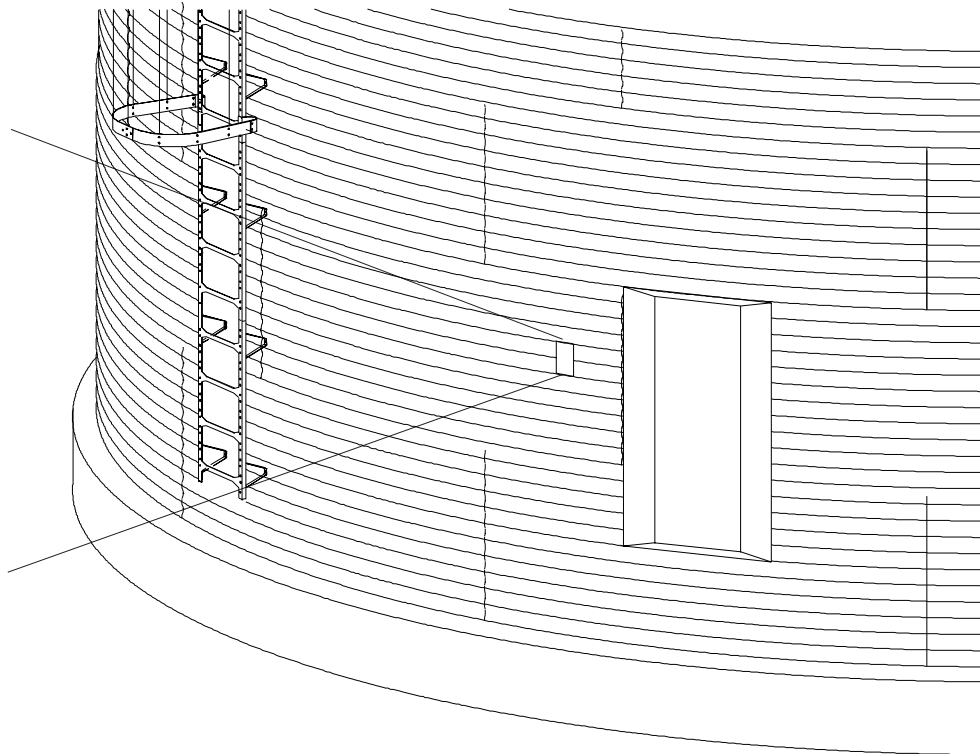


## 6. Decals (cont.)

- A. DANGER Sign No. DC-1395 was supplied with your bin unloading equipment. This safety sign should be applied to the side of the bin near the bin opening, so it will be viewed by people entering into the bin storage building. Do not cover any safety signs or any other signs that are already there.
- B. If the safety sign location suggested is not in full view because of equipment modifications, other equipment in the area or any reason, then locate the safety sign in a more suitable location.
- C. Be certain the surface is clean, dry and free of dirt and oil. Peel paper backing from decals and stick into place. The adhesive backing will bond on contact.



**Please remember, safety signs provide important safety information for people working near bin unloading equipment that is in operation.**



**If the Safety Sign cannot be easily read for any reason or has been painted over, replace it immediately.**

**Additional Safety Signs may be obtained free of charge from your dealer, distributor, or ordered from the factory.**


**Order SAFETY SIGN NO. DC-1395**



## 1. Attach the Horizontal Flighting.

- A. Attach the unload auger flighting to the horizontal flighting located in the vertical bin unload auger. Secure using bolt(s) and locknut(s).

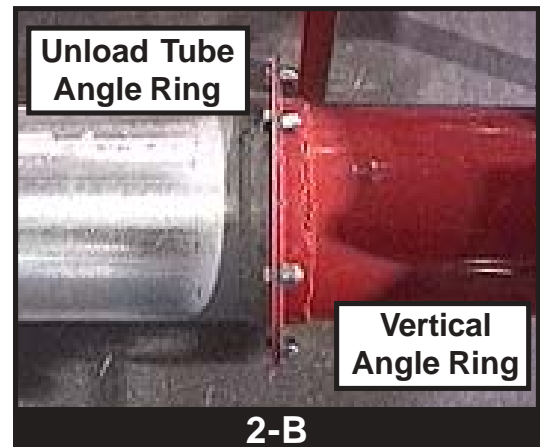
 When applicable, unbolt the unload flighting from the direct gear drive center well.

 6" - use one (1) 5/16" x 1-1/2" bolt and locknut Grade 5  
8" - use two (2) 7/16" x 2-1/2" bolts and locknuts Grade 5  
10" - use two (2) 1/2" x 2-1/2" bolts and locknuts Grade 5

 The Horizontal Flight Assembly is already installed in the vertical unit.

## 2. Attach the Vertical Bin Unload Auger to the Unload Tube.

- A. Slide the bin unloading auger flighting into the bin well unloading tube.
- B. Bolt the angle ring located on the vertical to the angle ring located on the unload tube. Tighten with a wrench.



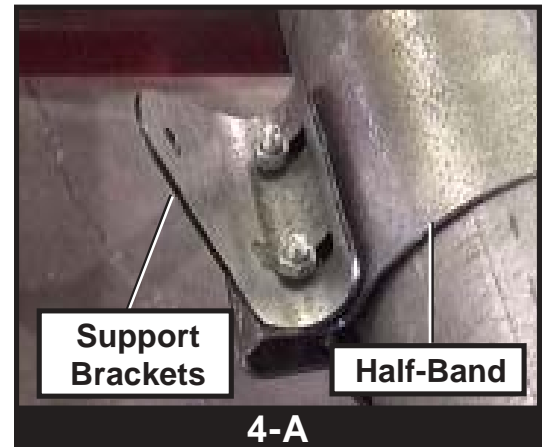
## 3. Adjust the stand.

- A. Adjust the stand located on the bottom of the vertical to align the vertical auger with the unload tube and accommodate the weight of the vertical.



## 4. Attach the Half Bands and Mounting Ears.

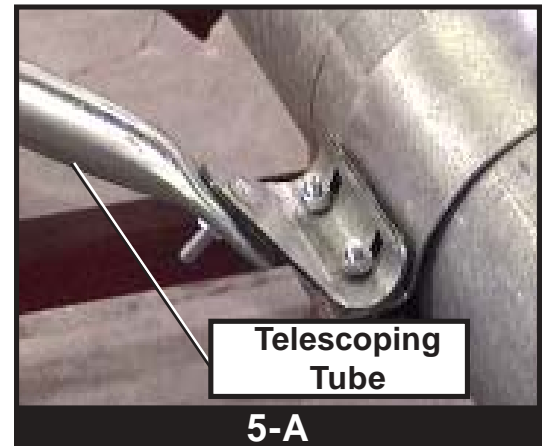
- A. Place the two (2) half bands around the vertical tube. Put the two support brackets for the telescoping tubes on the back of the half bands and bolt together with u-bolts and locknuts.



6" - use two (2) 5/16" x 1-3/4" x 1-3/4" u-bolts and four (4) 5/16" locknuts  
8" - use two (2) 5/16" x 1-3/4" x 2" u-bolts and four (4) 5/16" locknuts  
10" - use two (2) 5/16" x 1-3/4" x 2" u-bolts and four (4) 5/16" locknuts

## 5. Attach the Telescoping Tubes.

- A. Bolt the telescoping tubes to the support brackets located on the half bands. Secure the tubes with two (2) 5/16" x 1-3/4" bolts, lockwashers, flatwashers and nuts.



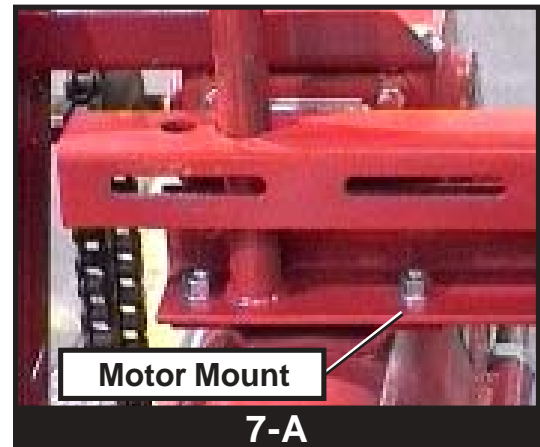
## 6. Attach the Belt Guard Mounting Angle.

- A. Attach the belt guard mounting angle to the top two (2) holes located on the gearbox. Secure the mounting angle with two (2) 3/8" x 1" bolts, lockwashers and flatwashers.



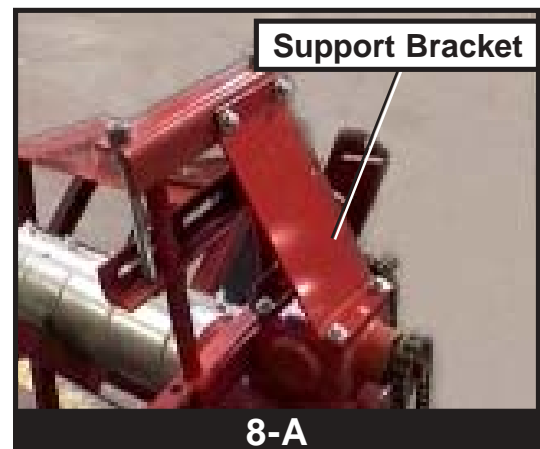
## 7. Install the Motor Mount.

- A. Attach the motor mount to the top two (2) holes **above** the gearbox located on the horizontal to vertical assembly. Secure it with two (2) 3/8" x 3/4" bolts, lockwashers, flatwashers and nuts.



## 8. Attach the Support.

- A. Attach the support to the two (2) holes located under the adjusting end of the motor mount. Secure using two (2) bolts, lockwashers and nuts. Lower end of support attaches to the lower two holes of the gearbox.



### Top Holes

- 6" - use two (2) 3/8" x 1" bolts, lockwashers, flatwashers and nuts
- 8" - use two (2) 3/8" x 1" bolts, lockwashers, flatwashers and nuts
- 10" - use two (2) 3/8" x 1" bolts, lockwashers, flatwashers and nuts

### Bottom Holes

- 6" - use two (2) 3/8" x 1" bolts, lockwashers and flatwashers
- 8" - use two (2) 3/8" x 1" bolts, lockwashers and flatwashers
- 10" - use two (2) 3/8" x 1" bolts, lockwashers and flatwashers

## 9. Install the Motor (not provided.)

- A. Using the chart located on page 1 to choose the correct motor that is necessary for the vertical bin unloading auger. Mount the motor onto the motor mounts.

**Please note: The motor or its hardware is not provided.**

## 10. Install the Belt Guard.

- A. Bolt the belt guard to the belt guard mounting angle. Secure it with two (2) 5/16" x 3/4" carriage bolts, lockwashers, flatwashers and nuts.



## 11. Install the Motor Pulley (not provided.)

- A. Install the motor pulley.



It is recommended that a 3-1/2" pulley is used on the motor.

## 12. Install the Pulley.

- A. Install the 12" pulley onto the gear box shaft. Place the pulley as close to the sprocket as possible.



The hub of the pulley should be facing inward.



## 13. Install the Drive Chain Shield.

- A. Attach the drive chain shield over the drive sprocket of the horizontal tube. Place the slot of the drive chain shield underneath the support stand nut.

	Part # for the Chain Shield
6"	GK1121
8"	GK1035
10"	GK2331



## 1. Perform Pre-start Checks.



Failure to perform any or all of these pre-start checks may cause damage to the equipment and/or cause **SERIOUS INJURY** or **DEATH** to those in the work area.

Failure to perform any or all of these pre-start checks may also be a misuse of the equipment. Any misuse of the equipment may void the warranty.

- A. Make sure ALL belts are tensioned properly.
- B. Make sure ALL shields are in place and that the belt(s) and pulley(s) are able to move freely.



**ALWAYS** keep ALL guards and shields in place, until all the power is disconnected and locked out.

- C. Inspect the drive unit for any problems or potential problems.
- D. Be aware of any emergency shutdown procedures. Two (2) people must always be in a position where the operation of the equipment can be monitored.
- E. Before starting the auger for the first time, make sure that all parts are assembled correctly according to the instructions in this manual.



Make certain **ONLY** trained operators are in the work area before operating or moving the machine. Two (2) people must always be in a position where the operation of the equipment can be monitored.

## 2. Start the Auger.

- A. Start the auger.



**DO NOT start or stop the auger while it is under load. Doing so may cause the auger to “jam.”**

- B. Run the auger through a “break-in” period, if it is being used for the first time or for the first time of the season.
- C. Polish the flighting by running the auger at partial capacity until it is smooth, before attempting full capacity.



**Failures may occur if the auger is run full before it has been “polished” during the “break-in” period.**



**NEVER operate the auger empty. Operating augers empty for any length of time will cause excessive wear.**  
**NEVER operator the auger at speeds higher than recommended. Auger flight speed in excess of recommended speed causes excessive wear.**



**Be aware of any unusual vibration or noises during the initial startup and “break-in” period. If anything unusual is detected, immediately shutdown the auger, and disconnect and lockout the power supply before servicing.**



## 1. Operate the Auger.



**The auger capacity can fluctuate greatly under varying conditions. Moisture content, different commodities, amount of foreign matter and speeds all play a part in the performance of the auger. Twenty-five percent (25%) moisture may cut capacity by as much as 40% under some conditions.**

- A. Make certain there are at least two (2) people in the work area to monitor operations at all times.
  
- B. Visually inspect the auger periodically during operation.



**Be alert for any unusual vibrations, noises and the loosening of any fasteners. If anything unusual is detected, immediately shutdown the auger, disconnect and lockout the power source before servicing.**

- C. Consideration should be given to the proper size auger for a batch drying or any intermittent type operations. When augers are stopped and restarted under full load, it may result in damage to the auger. Using a larger diameter auger and reducing its load level will be far better than subjecting a smaller diameter auger to big loads. If an auger is kept from absolute filling, it will make startup easier and will convey more efficiently.

## 1. Normal Shutdown.

- A. Before shutting down the unit, be sure the hoppers and augers are empty.
- B. Disconnect and lockout the power source before leaving the work area.

## 2. Emergency Shutdown.

- A. Know how to shutdown the auger in case of an emergency.
- B. Do not restart the auger while it is under load.



**NEVER start the equipment under load. Doing so may cause damage. This type of damage is considered a misuse of the equipment. Any misuse of the equipment may void the warranty.**

- C. Close the bin well control gates.
- D. Reconnect and unlock the power source.
- E. Clear the auger gradually, until there is no grain and there are no obstructions.

### **3. Storage Preparation.**

- A. Close all wells to the discharge auger.
- B. Be sure the unload tube is empty.
- C. Shutdown the auger.
- D. Make sure all fasteners are tight.

## 1. Maintain the Auger.

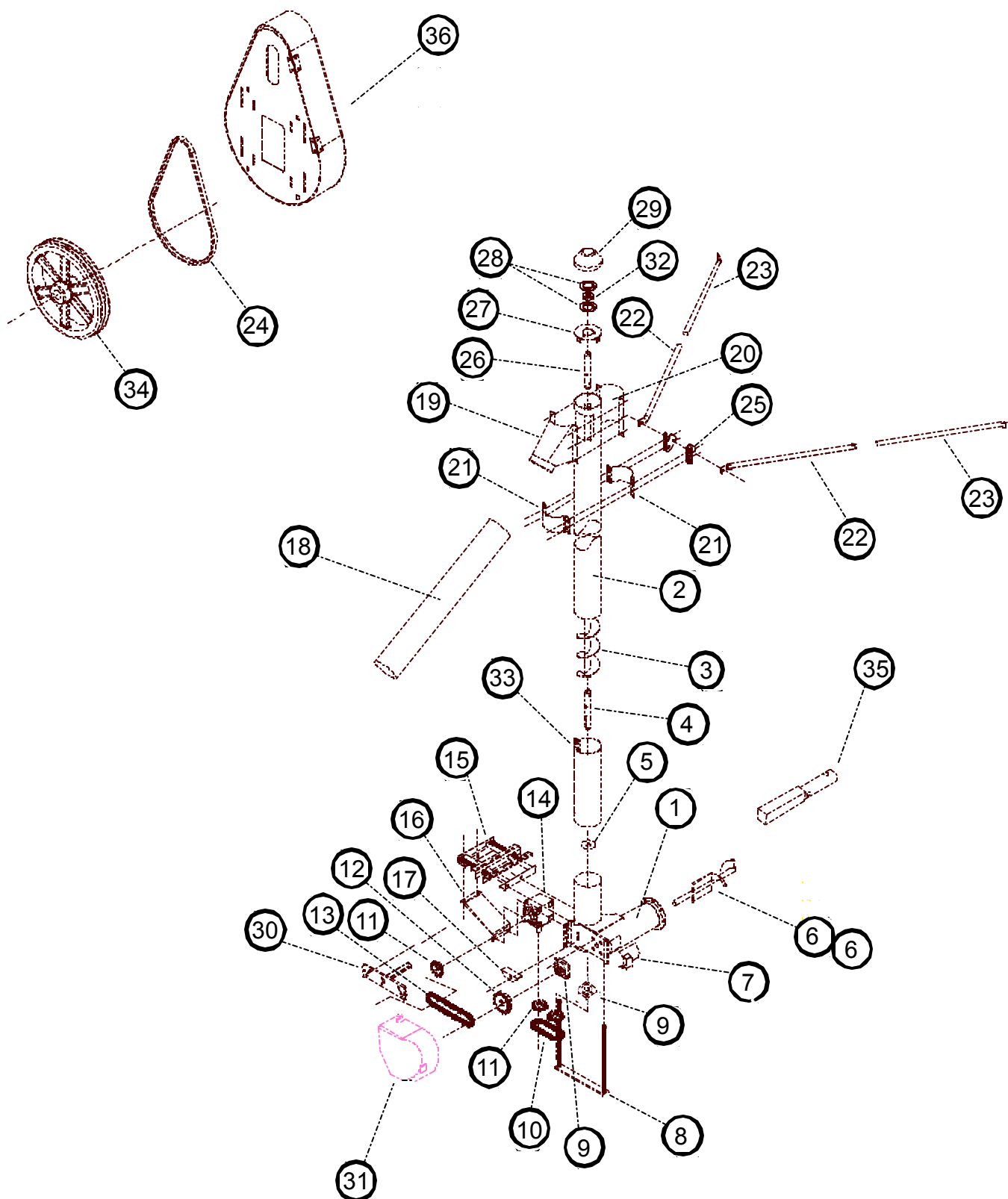


**ALWAYS shutdown and disconnect the power supply before adjusting, servicing or cleaning the equipment.**

- A. Use caution when repairing or replacing equipment parts.
- B. Make sure ALL decals are legible and tightly attached to the auger. If necessary, replace them **FREE OF CHARGE** by contacting your dealer or the manufacturer.
- C. Ensure that ALL electric motors, etc. are operating at the proper speed.
- D. Maintain proper adjustments on the belt(s).
- E. Mount controls for any electric motors at a safe distance from the machine and in a location accessible in case of an emergency.
- F. Make sure ALL electrical wiring is not damaged, and that it meets proper wiring codes.
- G. Make sure ALL components are in good working condition before use.
- H. Make sure all components are in good working condition before use.
- I. Grease the bearing at least two (2) times each season.

<b><i>Problem</i></b>	<b><i>Possible Cause</i></b>	<b><i>Solution</i></b>
<b>1. Auger vibration.</b>	A. Drive belt may be overtightened, putting head stub and flight in a bind. Damage can occur to the auger flighting, thus causing noise. Damage usually is caused from foreign material having been run through the auger.	A1. It may be necessary to remove the flighting for inspection.
<b>2. Low capacity.</b>	A. The auger may not be getting enough grain.	A1. Check that the intake has not bridged over, restricting flow. The exposed flighting at the auger intake should be covered with grain to achieve maximum capacity.
	B. The auger is moving too slowly.	B1. Check the auger speed. Speeds slower than the recommended speed will result in low capacity.
<b>3. Auger plugs.</b>	A. The auger may be getting too much grain, causing "jamming" inside the housing.	A1. Decrease the amount of grain the auger is gathering.
	B. The motor may be too small or wired improperly.	B1. If the motor is a newer lightweight aluminum type, the next larger size should be considered.
	C. The grain may be wet.	C1. If wet grain or other hard-to-move material is being augered, use a larger size motor than recommended for normal use.
	D. The auger may be jammed with foreign material.	D1. Be sure there is no foreign material in the auger such as sacks, tarp corners, etc.
	E. The discharge end may be plugged.	E1. Make sure the discharge end of the auger is not plugged. A plug of the discharge end will cause an auger plug.

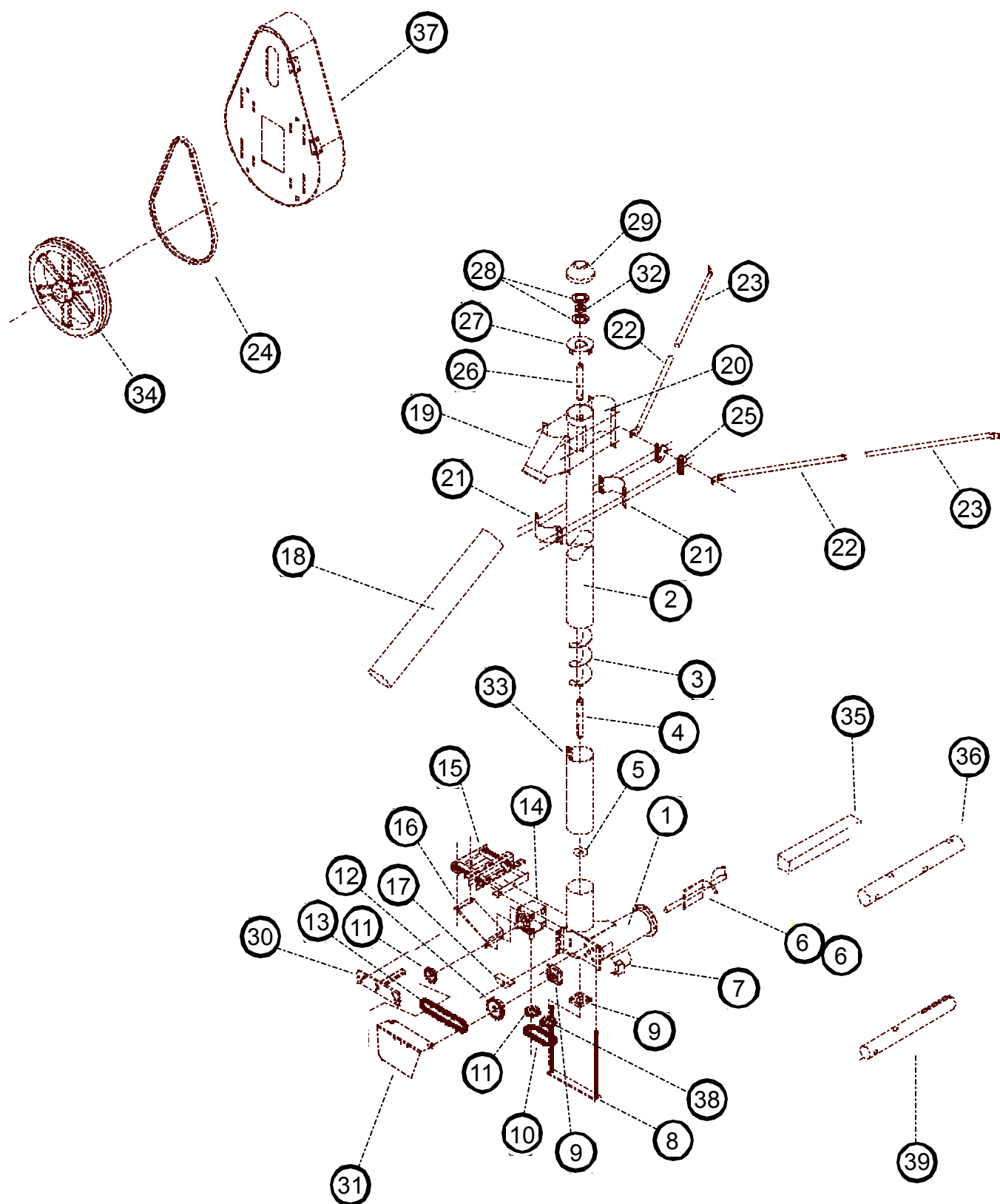
# 6" Vertical Bin Unloading Auger



## 6" Vertical Bin Unloading Auger

Ref #	Part #	Description
1	GK1044	Horizontal to Vertical Tube Assembly with Latch and Hole Cover
2	GK1050	Vertical Tube
3	GK1045	6" Vertical Flighting
4	GK1116	Bottom Drive Stub, 1' x 7-7/8" long
5	GK1113	Rubber Gasket, 1" (2.54 cm) I.D. x 3-1/4" (8.26 cm) O.D.
6	GK1047	Horizontal Flight Assembly
6	GK2180	Horizontal Flight Assembly DGD Sweep
7	GK1119	Inspection Hole Cover with 1/2 Hinge and Latch
8	GK1046	Stand (with nuts)
9	GK1049	2-hole Flange Bearing - 1" (2.54 cm) Bore w/ L.C.
10	GK1112	Roller Chain, lower #50 (33 pitch including connecting link)
11	GK1014	15-tooth Sprocket #50 - 1" (2.54 cm) Bore (Keyway)
12	GK1110	22-tooth Sprocket #50 - 1" (2.54 cm) Bore (Keyway)
13	GK1111	Roller Chain, side #50 (53 pitch including connecting link)
14	GK1007	A115 1:1 Bevel Gearbox
15	GK1120	6" Motor Mount
16	GK1036	Motor Mount Support
17	GK1020	Chain Tightener Block
18	GK1124	6" x 3' (.91 m 15.24 cm) Spout Tube
19	GK1123	6" x 45° Spout (less backband)
20	GK1125	6" x 45° Backband for Spout
21	GK1122	6" x 4" wide (10.16 cm) wide Halfband (galvanized)
22	GK1028	Telescoping Tube (less setscrew - 28" (71.12 cm) long)
23	GK1033	Telescoping Anchor Tube - 26" (66.04 cm) long
24	GK1308	B46 Belt
25	GK1034	Mounting Ear
26	GK1117	Top Stub Shaft, 1" x 7" (2.54 cm x 17.78 cm) long
27	GK1114	6" top Bearing Plate
28	GK1319	3 Hole Flangette for 1" (2.54 cm)
29	GK1115	6" Vertical Cap
30	GK1029	Belt Guard Support
31	GK1121	6" Chain Shield
32	GK1318	1" Bearing w/ Lock Collar
33	GK1048	6" Connecting Band
34	GK1321	2B Sheave 12" (30.48 cm) O.D. with 1" (2.54 cm) Bore
35	GK2020	Square to Round Connecting Stub DGD Sweep
36	GK1454	Belt Guard Assembly
N/S	GK1026	Latch Anchor Weldment
N/S	GK1032	Square Drive Key - 1/4" (0.64 cm), 1" (2.54 cm) long
N/S	GK1058	Square Drive Key - 1/4" (0.64 cm), 3-3/8" (8.57 cm) long

# 8" Vertical Bin Unloading Auger

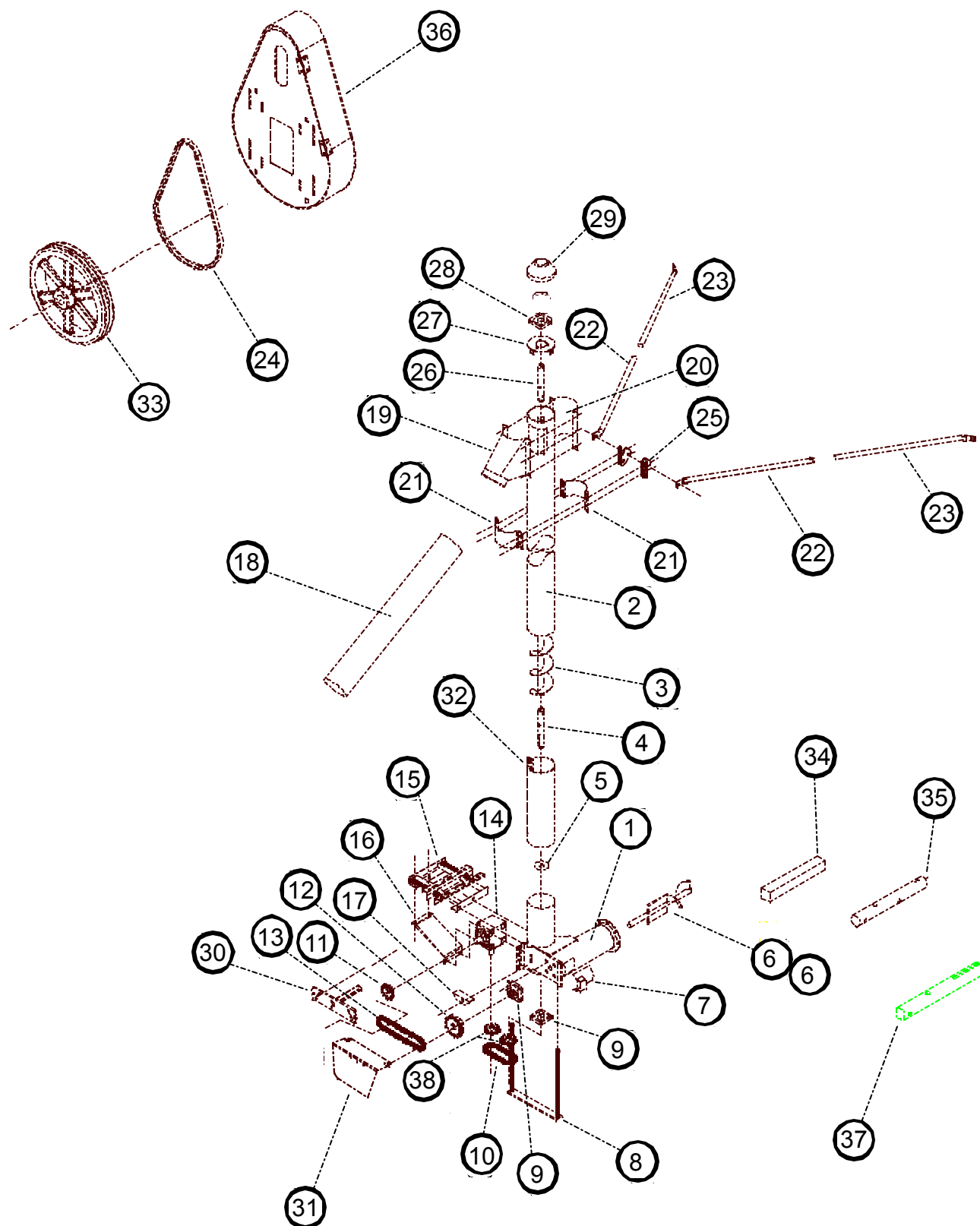




## 8" Vertical Bin Unloading Auger

Ref. #	Part #	Description
1	GK1003	Horizontal to Vertical Tube Assembly with Latch and Hole Cover
2	GK1019	12' 6" (3.66 m 15.24 cm) Vertical Auger Housing
3	GK1004	14' 5" (4.27 m 12.70 cm) Vertical Flighting Assembly
4	GK1018	Bottom Drive Stub - 1-1/4" x 8-5/8" (3.18 cm x 21.91 cm) long
5	GK1113	Rubber Gasket (bottom seal) 1" (2.54 cm) I.D. x 3-1/4" (8.26 cm) O.D.
6	GK1005	Horizontal Flight Assembly
6	GK2426	Horizontal Flight Assembly DGD Sweep
7	GK1025	Inspection Hole Cover with 1/2 Hinge and Latch
8	GK1006	Stand with Nuts
9	GK1017	1-1/4" (3.18 cm) Bearing 4-Hole Flange (greasable)
10	GK1023	Roller Chain #50 (40 Pitch including Connecting Link)
11	GK1014	15-tooth Sprocket, #50 x 1" (2.54 cm) Bore (Keyway) (Gearbox)
12	GK1022	22-tooth Sprocket, #50 x 1-1/4" (3.18 cm) Bore (Keyway)
13	GK1024	Roller Chain #50 (69 Pitch including Connecting Link)
14	GK1007	A115 1:1 Bevel Gearbox
15	GK1120	Motor Mount
16	GK1036	Motor Mount Support
17	GK1020	Chain Tightener Block
18	GK1039	8" x 3' (0.91m 20.32 cm) Spout Tube
19	GK1038	8" x 45° Spout less Back Band
20	GK1125	8" x 45° Back Band
21	GK1059	8" x 4" (10.16 cm) wide Half Band (Galv.)
22	GK1033	Telescoping Anchor Tube - 26" (66.04 cm) long
23	GK1028	Telescoping Tube less Setscrews - 28" (71.12 cm) long
24	GK1308	B46 Belt
25	GK1034	Mounting Ear
26	GK1012	Top Stub Shaft - 1-1/4" x 6-3/4" (3.18 cm 17.15 cm) long
27	GK1010	8" Top Bearing Plate
28	GK1009	3-Hole Flangette
29	GK1011	8" Vertical Cap
30	GK1029	Belt Guard Support
31	GK1035	8" Chain Shield for Vertical
32	GK1008	1-1/4" (3.18 cm) Bearing 3-Hole Flangette with Lock Collar
33	GK1015	8" Connecting Band
34	GK1321	12" (30.48 cm) 2-groove Pulley x 1" (2.54 cm) Bore
35	GK1872	Square Connecting Stub for DGD Sweep
36	GK1018	Round Connecting Stub for Standard Unload
37	GK1454	Belt Guard Assembly
38	GK1021	15-Tooth Sprocket #50 x 1-1/4" Bore
39	GK1018	Connecting Stub
N/S	GK1026	Latch Anchor Weldment
N/S	GK1027	Small Inspection Hole Cover with 1/2 Hinge and Latch
N/S	GK1032	Square Drive Key - 1/4" (0.64 cm), 1" (2.54 cm) long
N/S	GK1058	Square Drive Key - 1/4" (0.64 cm) Side Shaft of Gearbox - 3-3/8" (8.57 cm) long

# 10" Vertical Bin Unloading Auger



## 10" Vertical Bin Unloading Auger

Ref. #	Part #	Description
1	GK2314	Horizontal to Vertical Tube Assembly with Latch and Hole Cover
2	GK2321	10" Vertical Auger Housing
3	GK2317	10" Vertical Flighting Assembly
4	GK2326	Bottom Drive Stub - 1-1/4" x 8-5/8" (3.18 cm x 21.91 cm) long
5	GK1113	Rubber Gasket (bottom seal) 1" (2.54 cm) I.D. x 3-1/4" (8.26 cm) O.D.
6	GK2316	10" Horizontal Flight Assembly
6	GK3516	10" Horizontal Flight Assembly DGD Sweep
7	GC04093	Inspection Hole Cover with 1/2 Hinge and Latch
8	GK2310	10" Stand Weldment
9	GK1017	4-Hole Flangette (greasable) w/L.C.
10	GK2322	Roller Chain #50 (46 Pitch including Connecting Link)
11	GK2323	15-tooth Sprocket, #60 x 1" (2.54 cm) Bore (Keyway) (Gearbox)
12	GK2324	22-tooth Sprocket, #60 x 1-1/4" (3.18 cm) Bore (Keyway)
13	GK2325	Roller Chain #60 (72 Pitch including Connecting Link)
14	GK2320	A101 1:1 Bevel Gearbox
15	GK2329	10" Motor Mount
16	GK2330	10" Motor Mount Support
17	GK1020	Chain Tightener Block
18	GK1885	10" x 3' (0.91m 20.32 cm) Spout Tube
19	GK1881	10" x 45° Spout less Back Band
20	GK2333	10" Back Band
21	GK1301	10" x 4" wide Half Band (Galv.)
22	GK1033	Telescoping Anchor Tube - 26" (66.04 cm) long
23	GK1028	Telescoping Tube less Setscrews - 28" (71.12 cm) long
24	GK1323	B48 Belt
25	GK1034	Mounting Ear
26	GK1884	Top Stub Shaft - 1-1/4" x 9" (3.18 cm 22.86 cm) long
27	GK2315	10" Vertical Head Plate
28	GK1017	4 Hole Flange Bearing w/L.C. 1 1/4" Bore
29	GC01380	10" Vertical Cap
30	GK2328	Belt Guard Support
31	GK1331	10" Chain Shield
32	GK1883	10" Connecting Band
33	GK2332	3-Groove Pulley 12" x 1" Bore
34	GK2022	10" Square Connecting Stub DGD Sweep
35	GK1339	10" Round Connecting Stub
36	GK1454	Belt Guard Assembly
37	GK1340	10" Drive Stub
38	GK2327	19 Tooth Sprocket #60 x 1-1/4" Bore
N/S	GK1026	Latch Anchor Weldment
N/S	GK1027	Small Inspection Hole Cover with 1/2 Hinge and Latch
N/S	GK1032	Key - 1/4" x 1" (0.64 cm) x (2.54 cm) long
N/S	GK1058	Key - 1/4" x 3-3/8" (0.64 cm) x (8.57 cm) long

THE COMPANY WARRANTS ALL PRODUCTS MANUFACTURED TO BE FREE OF DEFECTS IN MATERIAL AND WORKMANSHIP UNDER NORMAL USAGE AND CONDITIONS FOR A PERIOD OF TWELVE (12) MONTHS AFTER RETAIL SALE TO THE ORIGINAL END USER OF SUCH PRODUCTS. OUR ONLY OBLIGATION IS, AND PURCHASER'S SOLE REMEDY SHALL BE TO REPAIR OR REPLACE, AT THE COMPANIE'S OPTION AND EXPENSE, PRODUCTS THAT, IN THE MANUFACTURERS SOLE JUDGEMENT, CONTAIN A MATERIAL DEFECT DUE TO MATERIALS OR WORKMANSHIP. ALL DELIVERY AND SHIPMENT CHARGES TO AND FROM THE FACTORY WILL BE PURCHASER'S RESPONSIBILITY. EXPENSES INCURRED BY OR ON BEHALF OF THE PURCHASER WITHOUT PRIOR WRITTEN AUTHORIZATION FROM AN AUTHORIZED EMPLOYEE OF THE COMPANY SHALL BE THE SOLE RESPONSIBILITY OF THE PURCHASER.

EXCEPT FOR THE ABOVE EXPRESS LIMITED WARRANTIES, THE COMPANY MAKES NO WARRANTY OF ANY KIND, EXPRESSED OR IMPLIED, INCLUDING, WITHOUT LIMITATION, WARRANTIES OF MERCHANTABILITY OR FITNESS FOR A PARTICULAR PURPOSE OR USE IN CONNECTION WITH (i) PRODUCT MANUFACTURED OR SOLD BY THE COMPANY OR (ii) ANY ADVICE, INSTRUCTION, RECOMMENDATION OR SUGGESTION PROVIDED BY AN AGENT, REPRESENTATIVE OR EMPLOYEE OF THE COMPANY REGARDING OR RELATED TO THE CONFIGURATION, INSTALLATION, LAYOUT, SUITABILITY FOR A PARTICULAR PURPOSE, OR DESIGN OF SUCH PRODUCT OR PRODUCTS.

IN NO EVENT SHALL THE COMPANY BE LIABLE FOR ANY DIRECT, INDIRECT, INCIDENTAL, OR CONSEQUENTIAL DAMAGES, INCLUDING, WITHOUT LIMITATION, LOSS OF ANTICIPATED PROFITS OR BENEFITS. PURCHASER'S SOLE AND EXCLUSIVE REMEDY SHALL BE LIMITED TO THAT STATED ABOVE, WHICH SHALL NOT EXCEED THE AMOUNT PAID FOR THE PRODUCT PURCHASED. THIS WARRANTY IS NOT TRANSFERABLE AND APPLIES ONLY TO THE ORIGINAL PURCHASER. WE SHALL HAVE NO OBLIGATION OR RESPONSIBILITY FOR ANY REPRESENTATIVE OR WARRANTIES MADE BY OR ON BEHALF OF ANY DEALER, AGENT OR DISTRIBUTOR OF THE COMPANY.

THE COMPANY ASSUMES NO RESPONSIBILITY FOR FIELD MODIFICATIONS. MODIFICATIONS TO THE PRODUCT NOT SPECIFICALLY COVERED BY THE CONTENTS OF THIS MANUAL WILL NULLIFY ANY PRODUCT WARRANTY THAT MIGHT HAVE BEEN OTHERWISE AVAILABLE. THE USE OF OUR EQUIPMENT TO HANDLE MATERIALS OTHER THAN FREE FLOWING, NON-ABRASIVE AND DRY MATERIALS, AS INTENDED, WILL RESULT IN THE VOIDING OF THIS LIMITED WARRANTY.

THE FOREGOING WARRANTY SHALL NOT COVER PRODUCTS OR PARTS WHICH HAVE BEEN DAMAGED BY NEGLIGENT USE, MISUSE, ALTERATION, OR ACCIDENT. ANY NEGLIGENT USE, MISUSE, ALTERATION, OR DAMAGE DUE TO ACCIDENT, AS DETERMINED BY A COMPANY REPRESENTATIVE, MAY VOID THE WARRANTY. THIS WARRANTY COVERS ONLY PRODUCTS MANUFACTURED BY THE COMPANY. THIS WARRANTY IS EXCLUSIVE AND IN LIEU OF ALL OTHER WARRANTIES EXPRESS OR IMPLIED. WE RESERVES THE RIGHT TO MAKE DESIGN OR SPECIFICATION CHANGES AT ANY TIME, BEARING NO RESPONSIBILITY TO MAKE SIMILAR DESIGN OR SPECIFICATION CHANGES ON PREVIOUSLY SOLD MERCHANDISE.

PRIOR TO INSTALLATION, PURCHASER HAS THE RESPONSIBILITY TO RESEARCH AND COMPLY WITH ALL FEDERAL, STATE, AND LOCAL CODES WHICH MAY APPLY TO THE LOCATION AND INSTALLATION.

07/21/98

---

THIS EQUIPMENT SHALL BE INSTALLED IN ACCORDANCE WITH THE CURRENT INSTALLATION CODES AND APPLICABLE REGULATIONS WHICH SHOULD BE CAREFULLY FOLLOWED IN ALL CASES. AUTHORITIES HAVING JURISDICTION SHOULD BE CONSULTED BEFORE INSTALLATIONS ARE MADE.



PO Box 1095  
Du Quoin, IL. 62832  
Ph: (618) 542-9197

---