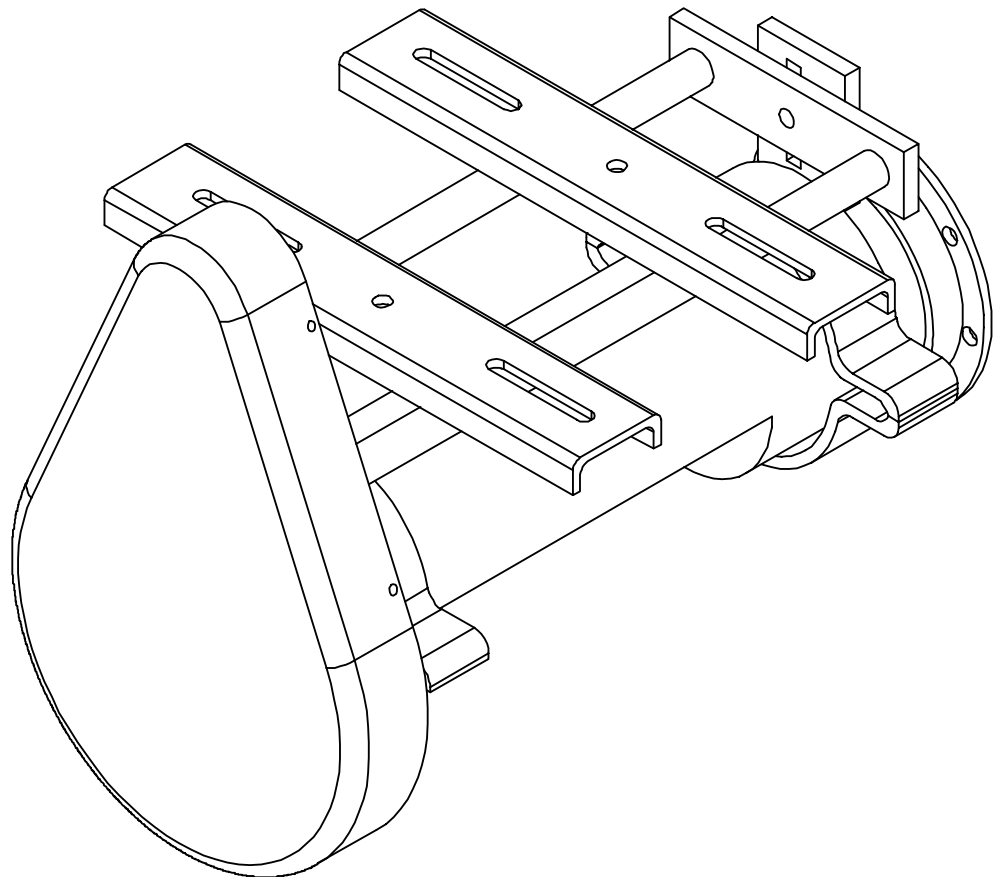


PNEG-1019
March 5, 2002
Revision No. 3

6" , 8" , & 10" Horizontal Unload Auger Drive Kits

6" , 8" , & 10" Horizontal Unload Auger Drive Kits

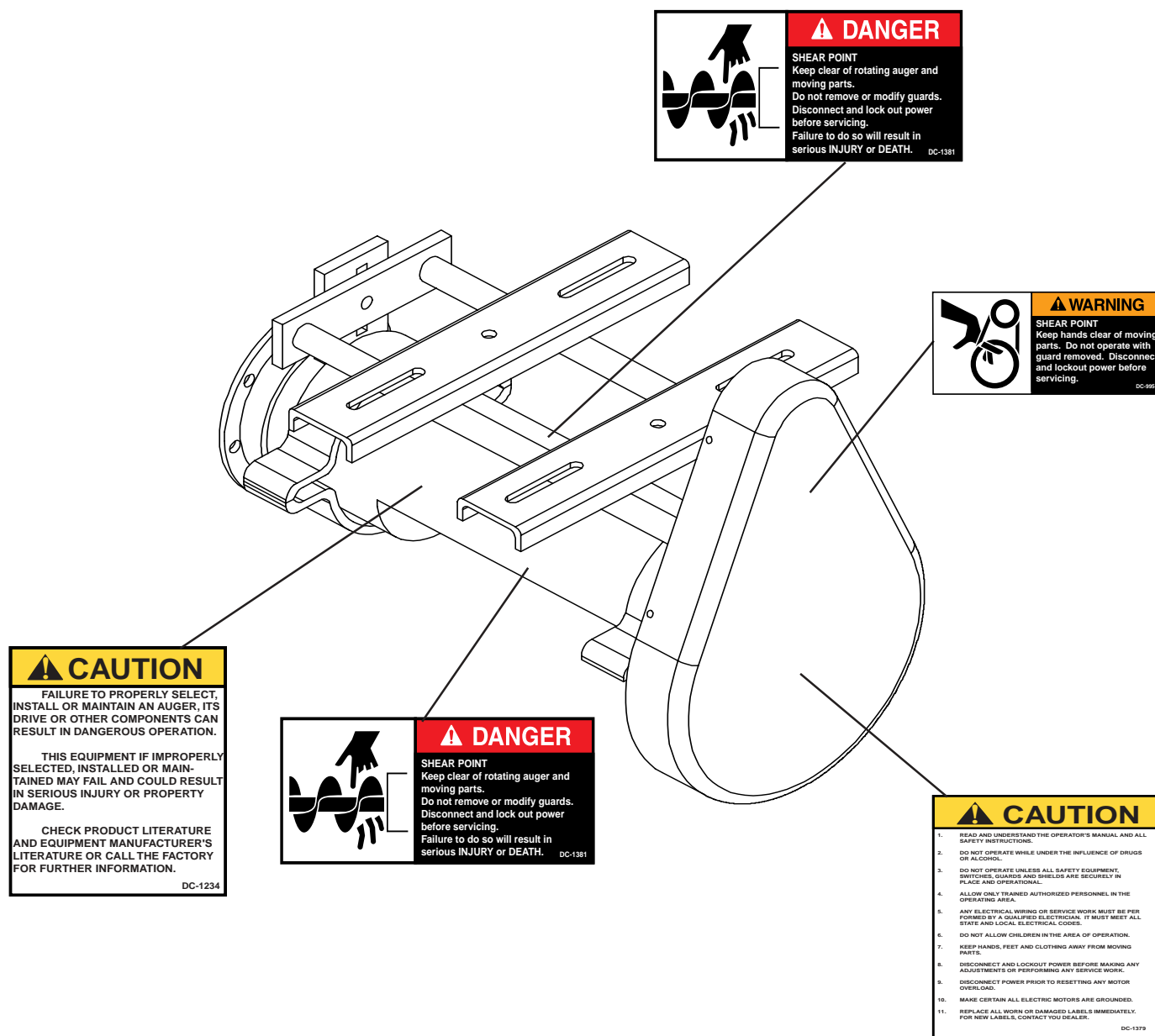
Assembly & Operation Manual



PNEG-1019
March 5, 2002
Revision No. 3

6. Decals.

- A. The image above shows the location of the decals and safety signs which should appear on the horizontal unload auger drive.

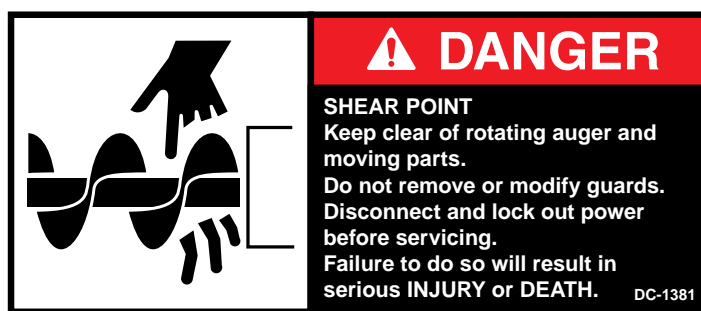


WARNING

Please remember safety signs provide important safety information for people working near bin unloading equipment that is in operation. Any safety signs that are worn, missing, illegible or painted over should be replaced immediately. Obtain **FREE** replacements by contacting your dealer.

6. Decals (cont.)

- B. The decal to the left is a CAUTION decal. It appears on the center of the auger housing. Its statements should be read, understood, and the operator(s) should heed the information. Failure to do so could result in SERIOUS INJURY, DEATH or property damage.



- C. The above pictured decal informs the operator(s) of a DANGER - SHEAR POINT. It appears in the center of the auger housing. Keep hands away from the auger and/or moving parts. NEVER remove or modify guards and shields. Disconnect and lockout power before servicing the equipment. Read this decal and heed its message. Failure to do so will result in SERIOUS INJURY or DEATH!



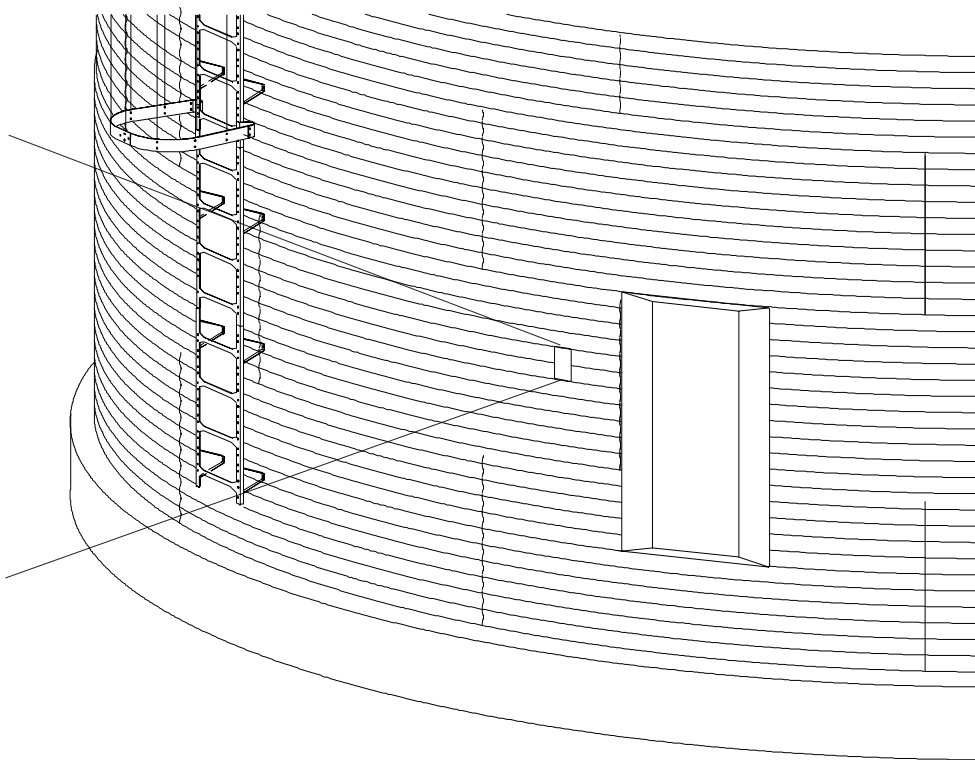
- D. The above pictured decal informs the operator(s) of a WARNING - SHEAR POINT. It appears in the center of the Belt Guard Cover. Always keep hands away from the belts & pulleys and/or moving parts. NEVER remove or modify guards and shields. Disconnect and lockout power before servicing the equipment. Read this decal and heed its message. Failure to do so will result in SERIOUS INJURY or DEATH!

6. Decals (cont.)

- A. DANGER Sign No. DC-1395 was supplied with your bin unloading equipment. This safety sign should be applied to the side of the bin near the bin opening, so it will be viewed by people entering into the bin storage building. Do not cover any safety signs or any other signs that are already there.
- B. If the safety sign location suggested is not in full view because of equipment modifications, other equipment in the area or any reason, then locate the safety sign in a more suitable location.
- C. Be certain the surface is clean, dry and free of dirt and oil. Peel paper backing from decals and stick into place. The adhesive backing will bond on contact.

NOTE

Please remember, safety signs provide important safety information for people working near bin unloading equipment that is in operation.



WARNING

If the Safety Sign cannot be easily read for any reason or has been painted over, replace it immediately. Additional Safety Signs may be obtained free of charge from your dealer, distributor, or ordered from the factory.

Order SAFETY SIGN NO. DC-1395

1. General Information.

- A. The company reserves the right to improve its product whenever possible and practical to do so. We reserve the right to change, improve and modify products at any time without obligation to make changes, improvements and modifications on equipment sold previously.
- B. This equipment has been designed and manufactured to give years of dependable service. The care and maintenance of this equipment will greatly affect the satisfaction and service obtained. By observing the instructions and suggestions recommended, the owner should receive competent service for many years. If additional information or assistance should be required, please contact your dealer.

2. Electric Drive Motors.

WARNING

Electrical controls and wiring should be installed by a qualified electrician. The motor disconnect switches and conductor cables should comply with the National Electrical code and any local codes which apply. Reset and motor starting stations should be located so that the operator can see that all personnel are clear of the equipment.

- A. Knowing the bin size and the length of horizontal flighting to be used in the unloading tube will be necessary to determine how much horsepower is required for the job.
- B. Use the charts on the following page to determine the size of motor required. Use a larger motor when encountering high moisture or when high capacity is required.

6" Horizontal Bin Unload Auger			
Bin Dia.	Length	Used With Standard Bin Well Horsepower	Used With Power Sweep Units Horsepower
14' - 16' (4.27 m - 4.88 m)	8' 9" (2.44 m 22.86 cm)	0.75	3
17' - 19' (5.18 m - 5.79 m)	10' 9" (3.05 m 22.86 cm)	1	3
20' - 22' (6.10 m - 6.71 m)	11' 9" (3.35 m 22.86 cm)	1	3
23' - 25' (7.01 m - 7.62 m)	13' 3" (3.96 m 7.62 cm)	1	3
26' - 28' (7.92 m - 8.53 m)	14' 9" (4.27 m 22.86 cm)	1.5	5
29' - 31' (8.84 m - 9.45 m)	16' 3" (4.88 m 7.62 cm)	2	5
32' - 34' (9.75 m - 10.36 m)	18' 3" (5.49 m 7.62 cm)	2	5
35' - 37' (10.67 m - 11.28 m)	19' 3" (5.79 m 7.62 cm)	2	5

8" Horizontal Bin Unload Auger			
Bin Dia.	Length	Used With Standard Bin Well Horsepower	Used With Power Sweep Units Horsepower
14' - 16' (4.27 m - 4.88 m)	8' 10" (2.44 m 25.40 cm)	1.5	3
17' - 19' (5.18 m - 5.79 m)	10' 10" (3.05 m 25.40 cm)	2	3
20' - 22' (6.10 m - 6.71 m)	11' 10" (3.35 m 25.40 cm)	2	5
23' - 25' (7.01 m - 7.62 m)	13' 4" (3.96 m 10.16 cm)	3	5
26' - 28' (7.92 m - 8.53 m)	14' 10" (4.27 m 25.40 cm)	3	5
29' - 31' (8.84 m - 9.45 m)	16' 4" (4.88 m 10.16 cm)	5	5
32' - 34' (9.75 m - 10.36 m)	18' 4" (5.49 m 10.16 cm)	5	5
35' - 37' (10.67 m - 11.28 m)	19' 4" (5.79 m 10.16 cm)	5	5

10" Horizontal Bin Unload Auger			
Bin Dia.	Length	Used With Standard Bin Well Horsepower	Used With Power Sweep Units Horsepower
23' - 25' (7.01 m - 7.62 m)	13' 6" (3.96 m 15.24 cm)	5	7.5
26' - 28' (7.92 m - 8.53 m)	15' (4.57 m)	5	7.5
29' - 31' (8.84 m - 9.45 m)	16' 6" (4.88 m 15.24 cm)	5	7.5
32' - 34' (9.75 m - 10.36 m)	18' 6" (5.49 m 15.24 cm)	5	7.5
35' - 37' (10.67 m - 11.28 m)	19' 6" (5.79 m 15.24 cm)	7.5	10

2. Electric Drive Motors (cont.)

- C. The following horsepower recommendations are for augering fairly dry grain. Use an electric motor of the proper size that operates at 1750 RPM. Motor pulleys are not furnished with the auger.

Model	Motor Pulley Diameter	Drive Pulley Diameter	Recommended Auger Speed	Maximum Auger Speed	Minimum Auger Speed
6" Standard and Power Well Units	3.5	12	510 RPM	700 RPM	450 RPM
8" Standard Bin Unloader	3.0	12	438 RPM	600 RPM	425 RPM
8" Power Head for use with Power Well	3.5	12	408 RPM	500 RPM	325 RPM

⚠ WARNING

1750 RPM electric motors and controls shall be installed by a qualified electrician, and must meet the standards set by the National Electrical Code and all local and state codes. Reset and motor starting controls shall be located where the operator has unrestricted access to the controls.

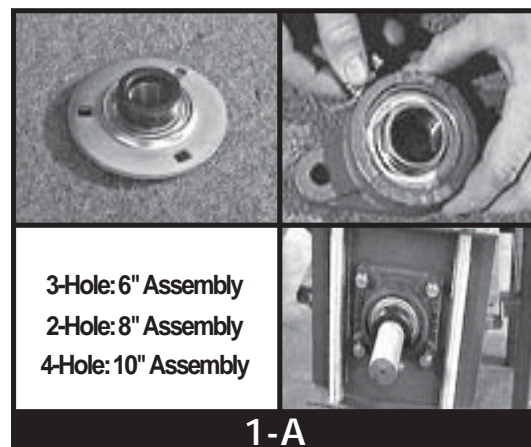
- D. A magnetic starter should be used for the operator's protection and for the protection of the motor. This is to protect the operator against accidental restart caused by power interruption, conductor fault, low voltage, circuit interruption or motor overload. Therefore, the motor must be restarted manually. If using a motor with built-in thermal overload protection, make sure this type of motor has a manual reset.

⚠ DANGER

Disconnect and lockout power before resetting motor overloads. Make certain electric motors are grounded.

1. Assemble the Head Bearing.

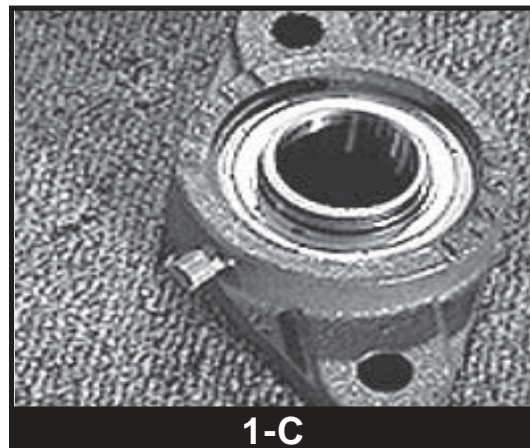
- A. Assemble the grease fitting onto the head bearing.
Screw the grease fitting clockwise.



- B. Tighten the grease fitting.



- C. Place the dust cover over the grease fitting.



2. Install the Head Bearing.

- A. Bolt the head bearing to the head plate assembly.

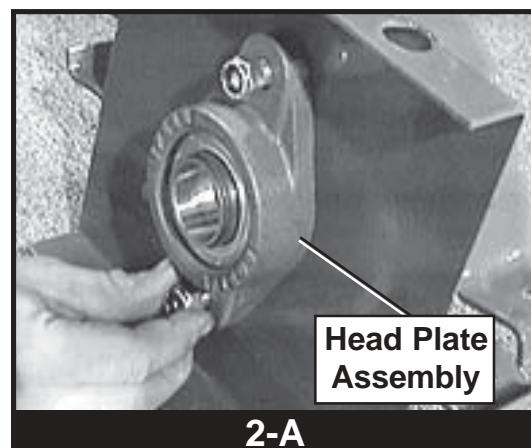
NOTE

6" - Three (3) 5/16" x 3/4" bolts & locknuts.

8" - Two (2) 7/8" x 1-1/2" bolts & locknuts.

10" - Four (4) 1/2" x 1-1/2" bolts & locknuts.

- B. Tighten the hardware with a wrench.

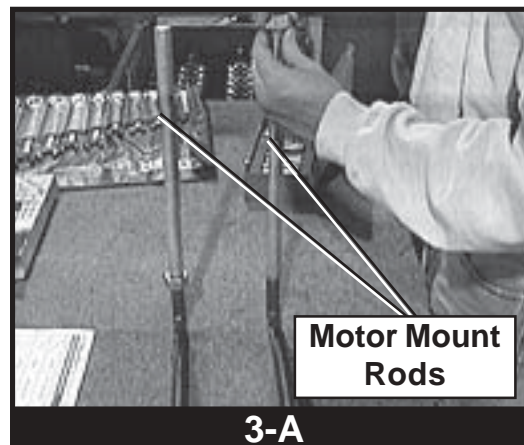


3. Assemble the Motor Mount Rods.

- A. Place two (2) nuts onto the motor mount rod.
Screw the nuts until they are close to the bend.

NOTE

6" & 8" - Two (2) 3/4" nuts.
10" - Two (2) 7/8" nuts.

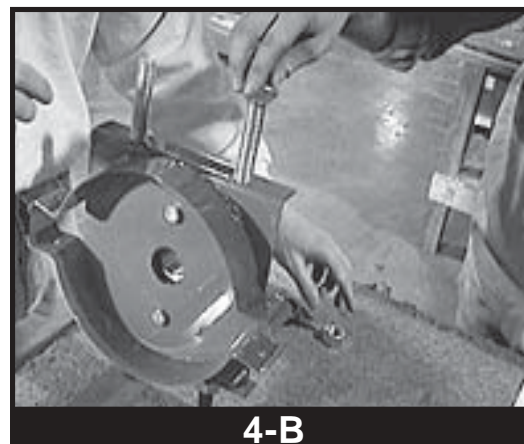


4. Install the Motor Mount Rods.

- A. Place the rods through the head plate.
- B. Place the remaining two(2) nuts on the motor mount rods to secure them to the head plate. Do not tighten completely.

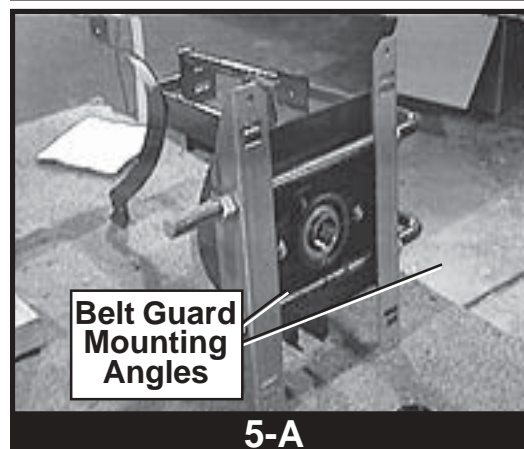
NOTE

6" & 8" - Two (2) 3/4" nuts.
10" - Two (2) 7/8" nuts.



5. Install the Belt Guard Mounting Angles.

- A. Place the belt guard mounting angles between the nuts on the motor mount rods and the head plate. Make sure that the mounting angles are facing inward toward each other. Tighten the nuts on the motor mount rods with a wrench.



6. Install the Discharge Tube.

- A. Place the discharge tube onto the head plate assembly and insert it into the head plate.
- B. Secure the discharge tube to the head plate assembly with bolts and nuts. Tighten with a wrench and socket.

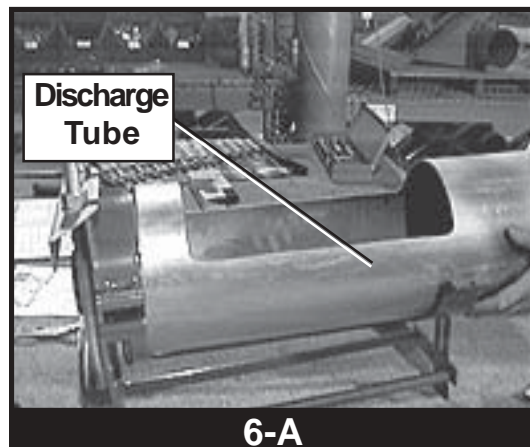
NOTE

6" - One (1) 5/16" x 1-1/2" bolt & nut.
8" & 10" - Two (2) 5/16" x 1-1/2" bolts & nuts.

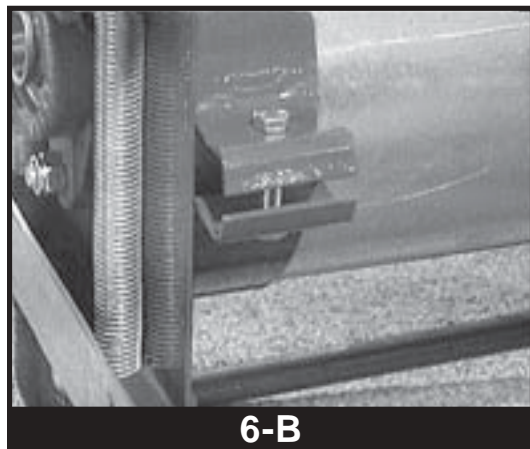
- C. Place the other half band onto the discharge tube at the opposite end securing it with bolts and nuts. Tighten with a wrench and socket.

NOTE

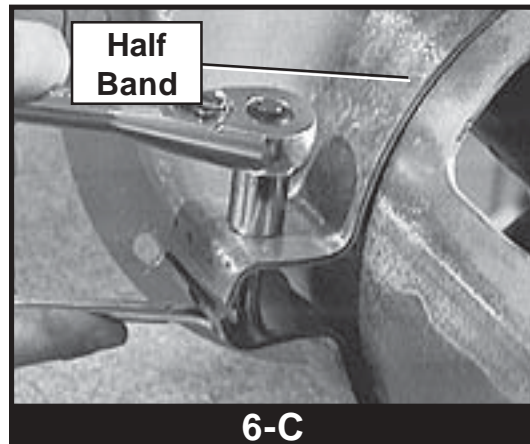
6" - One (1) 5/16" x 1-1/2" bolt & nut.
8" & 10" - Two (2) 5/16" x 1-1/2" bolts & nuts.



6-A



6-B



6-C

7. Assemble the Head Stub and the Connecting Stub to the Flighting.

- A. Insert the connecting stub into the end of the flight stub closest to the flighting.
- B. Align the holes in the stub, securing it with bolts and locknuts. Tighten with a wrench.

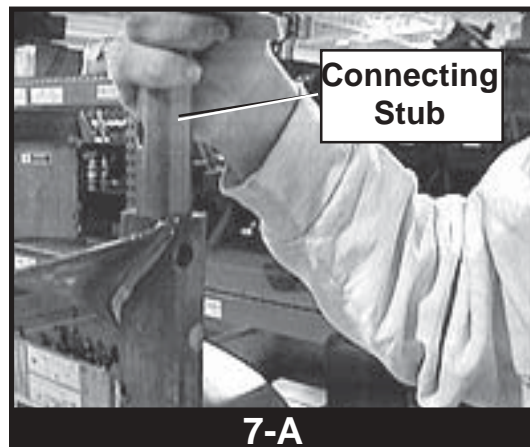
NOTE

6" - Two (2) 3/8" x 1-3/4" bolts & nuts.
8" - Two (2) 7/16" x 2-1/4" bolts & nuts.
10" - Two (2) 1/2" x 1-1/4" bolts & nuts.

- C. Place the head stub, with keyway facing outward, into the opposite end of the flighting and secure it with bolts and locknuts. Tighten with a wrench.

NOTE

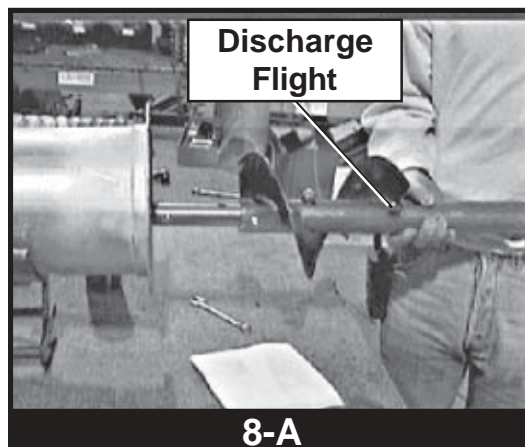
6" - Two (2) 3/8" x 1-3/4" bolts & nuts.
8" - Two (2) 7/16" x 2-1/4" bolts & nuts.
10" - Two (2) 1/2" x 1-1/4" bolts & nuts.



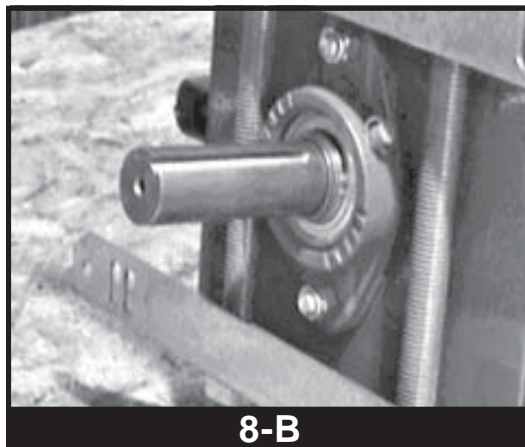
7-A

8. Insert the Discharge Flight.

- A. Insert the flighting, with the head stub first, into the discharge tube.

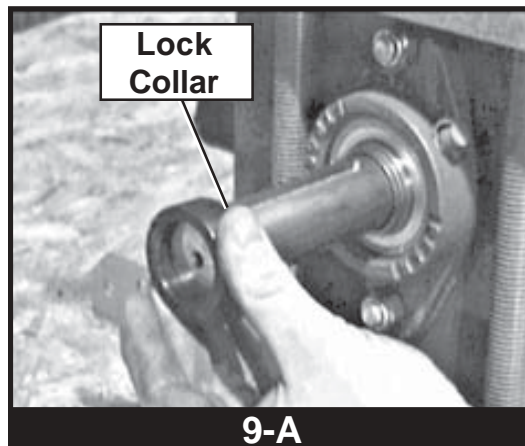


- B. Insert the head stub through the head bearing. Make sure the head stub is inserted far enough to place the lock collar and pulley on to the shaft.



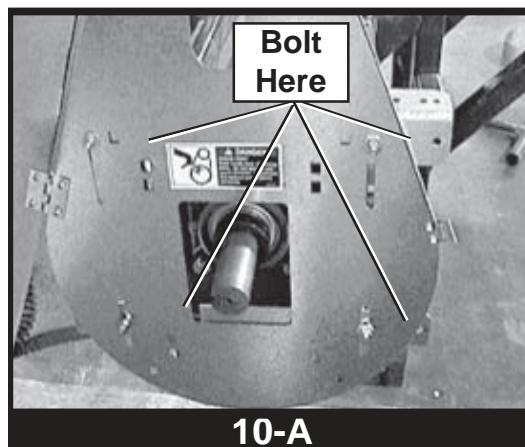
9. Install the Lock Collar.

- A. Slide the lock collar over the head stub, positioning it against the bearing. Do not tighten the lock collar at this time as it will be tightened later in the assembly.



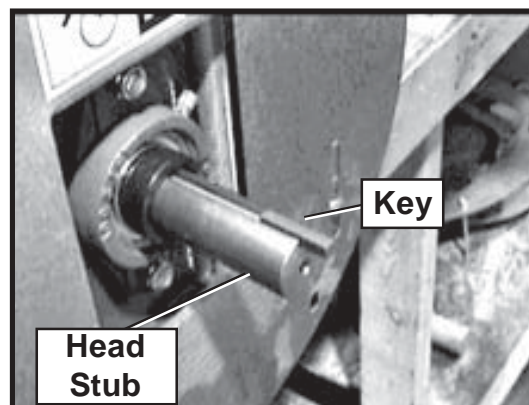
10. Install the Belt Guard.

- A. Attach the belt guard to the belt guard mounting angle. Use four(4) 5/16" x 3/4" carriage bolts, flat washers and nylock nuts. Tighten with a wrench.



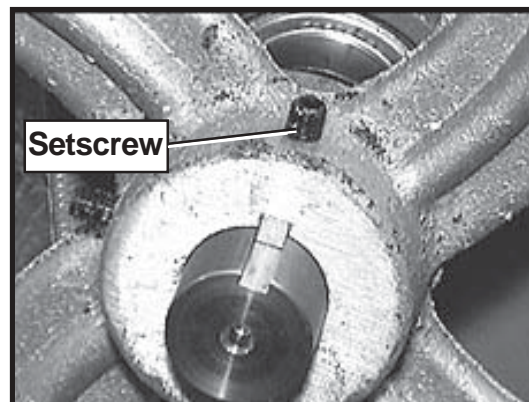
11. Install the Pulley.

- A. Place and position a key into the keyway located on the head stub.



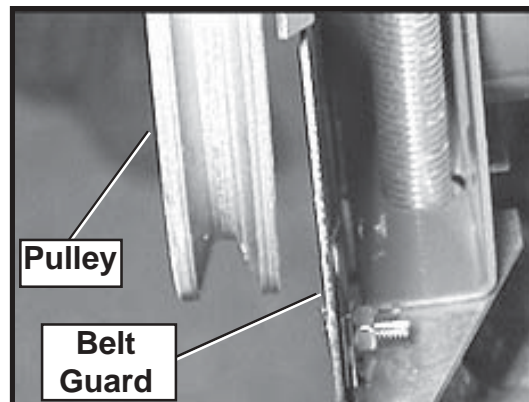
11-A

- B. Place the pulley onto the head stub with setscrews facing away from head plate.



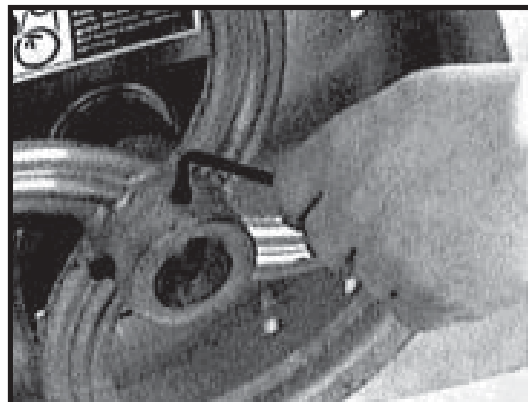
11-B

- C. Position the pulley so that it is as close to the back of the belt guard as possible, but still able to spin freely.



11-C

- D. Once the pulley is appropriately positioned, tighten the setscrews with a hex head wrench to secure it to the drive shaft.



11-D

12. Tighten the Lock Collar.

- A. Using a punch and hammer, drive the lock collar counter clockwise. Once the lock collar is set in place, using a hex head wrench to tighten the lock collar by tightening the setscrews.

NOTE

If the lock collar is not turned far enough, the setscrews will not lock it into place.



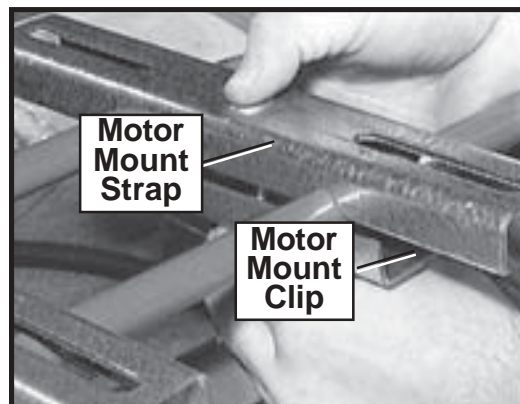
12-A

13. Install and Position the Motor Mount Brackets.

- A. Place the motor mount straps on top of the motor mount rods. Place the motor mount clips directly underneath the motor mount straps and bolt each pair together with 3/8" carriage bolts and locknuts.

NOTE

DO NOT completely tighten the bolts and nuts for the motor mount straps and motor mount clips. They will need to be adjusted to the motor.



13-A

14. Install the Motor. (Not Provided.)

- A. Attach the motor to the drive unit making sure that the motor is parallel with the auger housing. Use carriage bolts, flatwashers, lockwashers, and nuts.
- B. Install the pulley to the motor.
- C. Align the motor pulley and driven pulley by sliding the motor mount clips and straps along the motor mount rods. Tighten the motor mount clips and straps.

NOTE

Please note that the motor, motor pulley, and motor hardware are not supplied. Please see Page 2 for the proper motor size.

15. Install the Belt(s).

- A. Place the belt(s) onto the pulleys.
- B. Adjust the tension of the belt by turning the nuts located on the motor mount rods.

CAUTION

Do not overtighten the drive belt or excessive vibration and flight shaft breakage at the bearing could result.

16. Install the Horizontal Unload Auger on the Bin.

- A. Remove cap from unload tube.
- B. Attach the horizontal unloading auger to the unloading flight using bolts and locknuts.

NOTE

6" - Two (2) 3/8" x 1-3/4" bolt & locknut.
8" - Two (2) 7/6" x 2-1/4" bolts & locknuts.
10" - Two (2) 1/2" x 2-1/4" bolts & locknuts.

- C. Use the bolts removed from cap to attach horizontal angle ring to unload tube angle ring.
Tighten each securely.

1. Perform Pre-start Checks.

⚠ DANGER

Failure to perform any or all of these pre-start checks may cause damage to the equipment and/or cause **SERIOUS INJURY** or **DEATH** to those in the work area.

Failure to perform any or all of these pre-start checks may also be a misuse of the equipment. Any misuse of the equipment may void the warranty.

- A. Make sure ALL belts are tensioned properly.
- B. Make sure ALL shields are in place and that the belt(s) and pulley(s) are able to move freely.

⚠ DANGER

ALWAYS keep ALL guards and shields in place, until all the power is disconnected and locked out.

- C. Inspect the drive unit for any problems or potential problems.
- D. Be aware of any emergency shutdown procedures. Two (2) people must always be in position where the operation of the equipment can be monitored.
- E. Before starting the auger for the first time, make sure that all parts are assembled correctly according to the instructions in this manual.

⚠ WARNING

Make certain **ONLY** trained operators are in the work area before operating or moving the machine. Two (2) people must always be in a position where the operation of the equipment can be monitored.

2. Start the Auger.

A. Start the auger.

CAUTION

DO NOT start or stop the auger while it is under load. Doing so may cause the auger to “jam.”

B. Run the auger through a “break-in” period, if it is being used for the first time or for the first time of the season.

C. Polish the flighting by running the auger at partial capacity until it is smooth, before attempting full capacity.

CAUTION

Failures may occur if the auger is run full before it has been “polished” during the “break-in” period.

CAUTION

**NEVER operate the auger empty. Operating augers empty for any length of time will cause excessive wear.
NEVER operator the auger at speeds higher than recommended. Auger flight speed in excess of recommended speed causes excessive wear.**

CAUTION

Be aware of any unusual vibration or noises during the initial startup and “break-in” period. If anything unusual is detected, immediately shutdown the auger, and disconnect and lockout the power supply before servicing.

1. Operate the Auger.

NOTE

The auger capacity can fluctuate greatly under varying conditions. Moisture content, different commodities, amount of foreign matter and speeds all play a part in the performance of the auger. Twenty-five percent (25%) moisture may cut capacity by as much as 40% under some conditions.

- A. Make certain there are at least two (2) people in the work area to monitor operations at all times.

- B. Visually inspect the auger periodically during operation.

CAUTION

Be alert for any unusual vibrations, noises and the loosening of any fasteners. If anything unusual is detected, immediately shutdown the auger, disconnect and lockout the power source before servicing.

- C. Consideration should be given to the proper size auger for a batch drying or any intermittent type operations. When augers are stopped and restarted under full load, it may result in damage to the auger. Using a larger diameter auger and reducing its load level will be far better than subjecting a smaller diameter auger to big loads. If an auger is kept from absolute filling, it will make startup easier and will convey more efficiently.

1. Normal Shutdown.

- A. Before shutting down the unit, be sure the hoppers and augers are empty.
- B. Disconnect and lockout the power source before leaving the work area.

2. Emergency Shutdown.

- A. Know how to shutdown the auger in case of an emergency.
- B. Do not restart the auger while it is under load.

CAUTION

NEVER start the equipment under load. Doing so may cause damage. This type of damage is considered a misuse of the equipment. Any misuse of the equipment may void the warranty.

- C. Close the bin well control gates.
- D. Reconnect and unlock the power source.
- E. Clear the auger gradually, until there is no grain and there are no obstructions.

3. Storage Preparation.

- A. Close all wells to the discharge auger.
- B. Be sure the unload tube is empty.
- C. Shutdown the auger.
- D. Make sure all fasteners are tight.

1. Maintain the Auger.

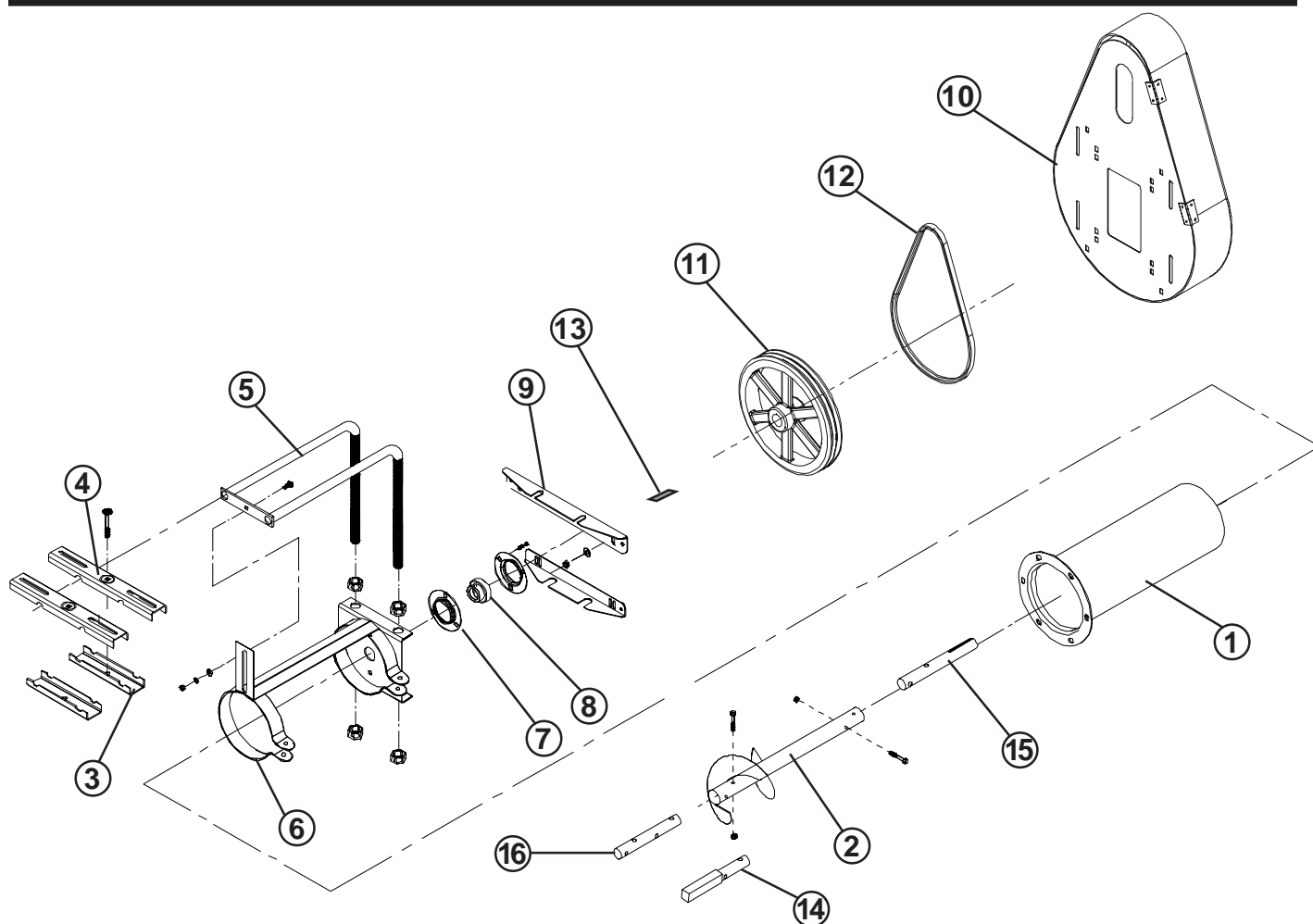
⚠ DANGER

ALWAYS shutdown and disconnect the power supply before adjusting, servicing or cleaning the equipment.

- A. Use caution when repairing or replacing equipment parts.
- B. Make sure ALL decals are legible and tightly attached to the auger. If necessary, replace them **FREE OF CHARGE** by contacting your dealer, warehouse or the factory.
- C. Ensure that ALL electric motors, etc. are operating at the proper speed.
- D. Maintain proper adjustments on the belt(s).
- E. Mount controls for any electric motors at a safe distance from the machine and in a location accessible in case of an emergency.
- F. Make sure ALL electrical wiring is not damaged, and that it meets proper wiring codes.
- G. Make sure ALL components are in good working condition before use.
- H. Make sure all components are in good working condition before use.
- I. Grease the bearing at least two (2) times each season.

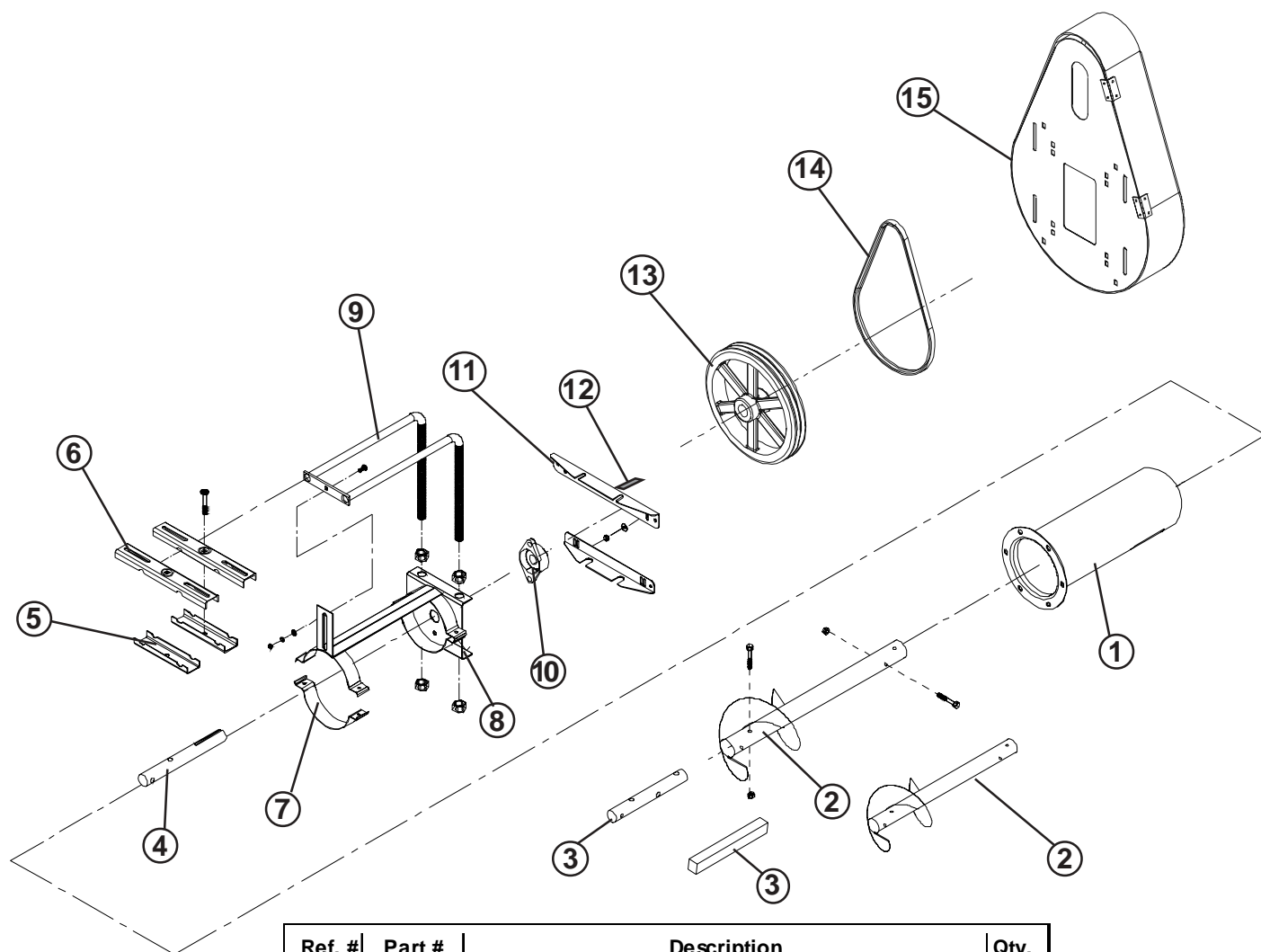
<i>Problem</i>	<i>Possible Cause</i>	<i>Solution</i>
1. The auger is vibrating.	A. The drive belt may be too tight, binding the head stub and flight. Damage can occur to the auger flighting, causing noise. Damage usually is caused from foreign material being run through the auger.	A1. Adjust the drive belt to the proper tightness. A2. It may be necessary to remove the flighting for inspection.
2. Capacity is too low.	A. There may not be enough grain reaching the auger.	A1. Make sure the intake has not bridged over, restricting flow. The flighting at the intake should be covered with grain for maximum capacity.
	B. The auger is moving too slowly.	B1. Check the auger speed. Low capacity will result from speeds slower than recommended.
3. The auger plugs.	A. The auger may be “jamming” because too much grain is reaching the auger.	A1. Decrease the amount of grain the auger is gathering.
	B. The motor may be too small or wired improperly.	B1. If the motor is a newer lightweight aluminum type, the next larger size may be desirable.
	C. The grain may be wet.	C1. If wet grain or other hard-to-move material is being augered, use a larger size motor than recommended for normal use.
	D. The auger may be jammed with foreign material.	D1. Remove any foreign material in the auger.
	E. The discharge end may be plugged.	E1. Unplug any plugs at the discharge end of the auger.

6" Horizontal Bin Unloader



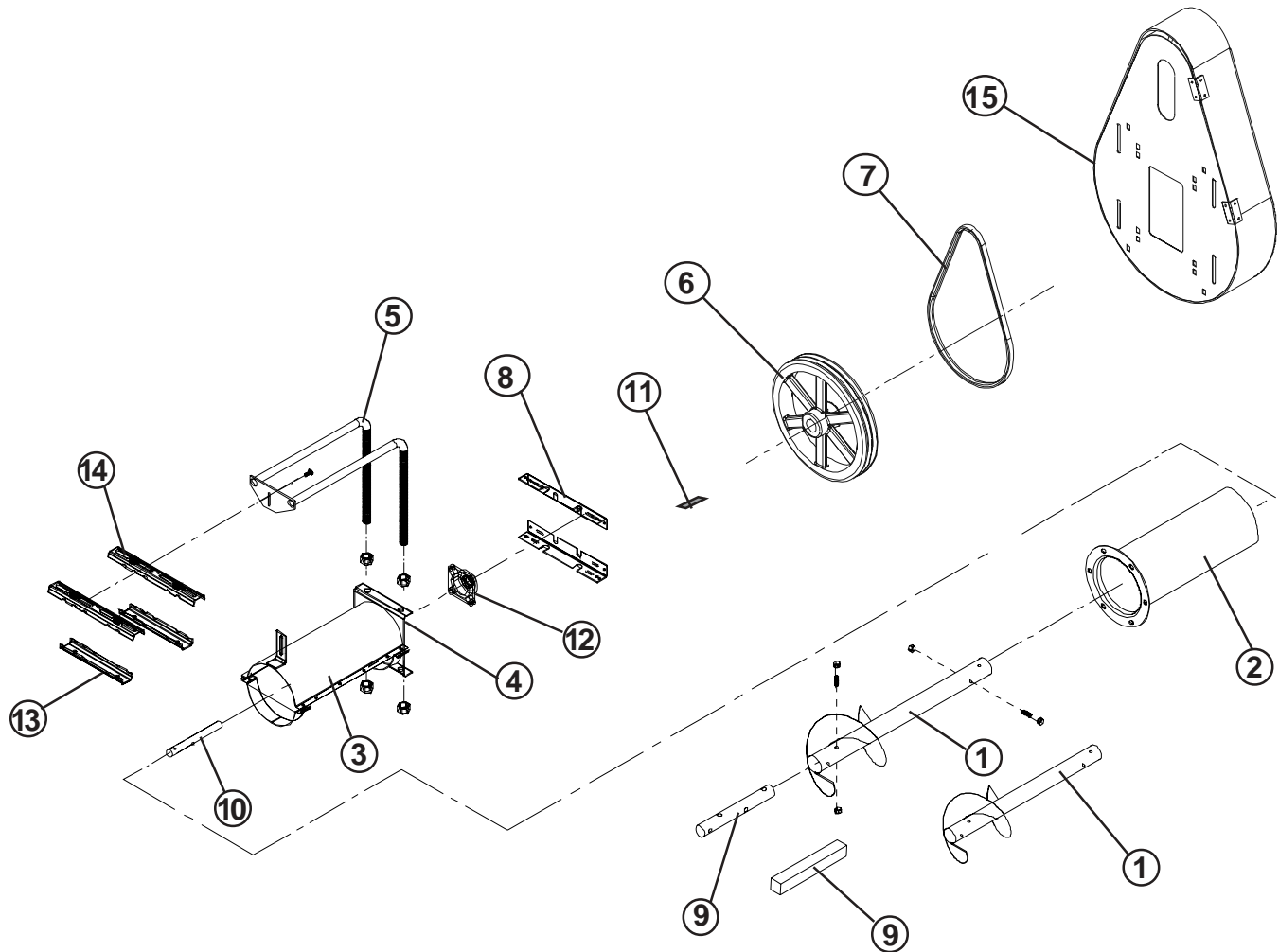
Ref. #	Part #	Description	Qty.
1	GK1314	Discharge Tube	1
2	GK1865	Discharge Flight PS - 23" (58.42 cm) long	1
3	GK1064	Motor Mount Clip	2
4	GK1063	Motor Mount Strap	2
5	GK1312	Motor Mount Rod Assembly	1
6	GK1313	Head Plate Assembly	1
7	GK1319	Bearing Retainer - 3-hole Flangette	2
8	GK1318	1" (2.54 cm) Bearing w/ Lock Collar	1
9	GK1311	Belt Guard Mounting Angle	2
10	GK1454G	Belt Guard Assembly	1
11	GK1309	1B Sheave - 12" (30.48 cm) OD 1" (2.54 cm) Bore	1
11	GK1221	2B Sheave - 12" (30.48 cm) OD 1" (2.54 cm) Bore	2
12	GK1308	B46 Belt (for 1B drive)	1
12	GK1308	B46 Belt (for 2B drive)	2
13	S-4513	1/4" x 1/4" x 2" (0.64 cm x 0.64 cm x 5.08 cm) Key	1
14	GK2020	Square to Round Stub for Power Sweep	2
15	GK2025	Head Stub	1
16	GK1351	Connecting Stub - 1" OD x 9.59"	1
N/S	GC04388	Hardware Bag	1

8" Horizontal Bin Unloader



Ref. #	Part #	Description	Qty.
1	GK1332	Discharge Tube	1
2	GK1325	Discharge Flight - 23" (58.42 cm) long	1
2	GK1868	Discharge Flight - For 8" PS 23" (58.42 cm) long	1
3	GK1328	Connecting Stub	1
3	GK1872	Square Stub For 8" Power Sweep	1
4	GK1331	Keyway Head Stub	1
5	GK1064	Motor Mount Clip	2
6	GK1063	Motor Mount Strap	2
7	GK1055	2" (5.08 cm) wide 8" (20.32 cm) Half Band	1
8	GK1329	Head Plate Assembly	1
9	GK1327	Motor Mount Rod Assembly	1
10	GK1330	1-1/4" (3.18 cm) Flange Bearing w/ Lock Collar	1
11	GK1311	Belt Guard Mounting Angle	2
12	S-4513	1/4" x 1/4" x 2" (0.64 cm x 0.64 cm x 5.08 cm) Key	1
13	GK1324	1B Sheave 12" (30.48 cm) OD - 1-1/4" (3.18 cm) Bore	1
13	GK1335	2B Sheave 12" (30.48 cm) OD - 1-1/4" (3.18 cm) Bore	1
13	GK2234	3B Sheave 15" 38.10 cm) OD - 1-1/4" (3.18 cm) Bore	1
14	GK1323	B46 Belt (for 1B Drive)	1
14	GK1323	B46 Belt (for 2B Drive)	2
14	GK1346	B57 Belt (for 3B Drive)	3
15	GK1454G	Belt Guard Assembly	1
N/A	GC06315	Hardware Package	1

10" Horizontal Bin Unloader



Ref. #	Part #	Description	Qty.
1	GK1347	Discharge Flighting Assembly	1
1	GK2021	Discharge Flight for 10" Power Sweep	1
2	GK1348	10" (25.40 cm) Discharge Tube	1
3	GK1057	2" (5.08 cm) wide 10" (25.40 cm) Half Band	1
4	GK1349	Head Plate Assembly	1
5	GK1350	Motor Mount Rod Assembly	1
6	GK1345	2B 15" (38.10 cm) OD Sheave - 1-1/2" (3.81 cm) Bore	1
6	GK1304	3B 15" (38.10 cm) OD Sheave 1-1/2" (3.81 cm) Bore	1
7	GK1346	B-57 V-Belt	2
7	GK1346	B-57 V-Belt	3
8	GK1344	Belt Guard Mounting Angle	2
9	GK1339	Connecting Stub - 9-1/2" (24.13 cm) long	1
9	GK2022	Square Stub for 10" Power Sweep	1
10	GK1340	Head Drive Stub - 10-1/2" (26.67 cm) long	1
11	GC04494	3/8" x 3/8" x 3" (0.95 cm x 0.95 cm x 7.62 cm) long Key	1
12	GK1343	4-hole Flange Bearing - 1-1/2" (3.81 cm) Bore	1
13	GK1341	Bottom Motor Mount Clip	2
14	GK1342	Top Motor Mount Straps	2
15	GK1454G	Belt Guard Assembly	1
N/S	GC04487	Hardware Bag	1

THE COMPANY WARRANTS ALL PRODUCTS MANUFACTURED TO BE FREE OF DEFECTS IN MATERIAL AND WORKMANSHIP UNDER NORMAL USAGE AND CONDITIONS FOR A PERIOD OF TWELVE (12) MONTHS AFTER RETAIL SALE TO THE ORIGINAL END USER OF SUCH PRODUCTS. OUR ONLY OBLIGATION IS, AND PURCHASER'S SOLE REMEDY SHALL BE TO REPAIR OR REPLACE, AT THE COMPANY'S OPTION AND EXPENSE, PRODUCTS THAT, IN THE MANUFACTURERS SOLE JUDGEMENT, CONTAIN A MATERIAL DEFECT DUE TO MATERIALS OR WORKMANSHIP. ALL DELIVERY AND SHIPMENT CHARGES TO AND FROM THE FACTORY WILL BE PURCHASER'S RESPONSIBILITY. EXPENSES INCURRED BY OR ON BEHALF OF THE PURCHASER WITHOUT PRIOR WRITTEN AUTHORIZATION FROM AN AUTHORIZED EMPLOYEE OF THE COMPANY SHALL BE THE SOLE RESPONSIBILITY OF THE PURCHASER.

EXCEPT FOR THE ABOVE EXPRESS LIMITED WARRANTIES, THE COMPANY MAKES NO WARRANTY OF ANY KIND, EXPRESSED OR IMPLIED, INCLUDING, WITHOUT LIMITATION, WARRANTIES OF MERCHANTABILITY OR FITNESS FOR A PARTICULAR PURPOSE OR USE IN CONNECTION WITH (i) PRODUCT MANUFACTURED OR SOLD BY THE COMPANY OR (ii) ANY ADVICE, INSTRUCTION, RECOMMENDATION OR SUGGESTION PROVIDED BY AN AGENT, REPRESENTATIVE OR EMPLOYEE OF THE COMPANY REGARDING OR RELATED TO THE CONFIGURATION, INSTALLATION, LAYOUT, SUITABILITY FOR A PARTICULAR PURPOSE, OR DESIGN OF SUCH PRODUCT OR PRODUCTS.

IN NO EVENT SHALL THE COMPANY BE LIABLE FOR ANY DIRECT, INDIRECT, INCIDENTAL, OR CONSEQUENTIAL DAMAGES, INCLUDING, WITHOUT LIMITATION, LOSS OF ANTICIPATED PROFITS OR BENEFITS. PURCHASER'S SOLE AND EXCLUSIVE REMEDY SHALL BE LIMITED TO THAT STATED ABOVE, WHICH SHALL NOT EXCEED THE AMOUNT PAID FOR THE PRODUCT PURCHASED. THIS WARRANTY IS NOT TRANSFERABLE AND APPLIES ONLY TO THE ORIGINAL PURCHASER. WE SHALL HAVE NO OBLIGATION OR RESPONSIBILITY FOR ANY REPRESENTATIVE OR WARRANTIES MADE BY OR ON BEHALF OF ANY DEALER, AGENT OR DISTRIBUTOR OF THE COMPANY.

THE COMPANY ASSUMES NO RESPONSIBILITY FOR FIELD MODIFICATIONS. MODIFICATIONS TO THE PRODUCT NOT SPECIFICALLY COVERED BY THE CONTENTS OF THIS MANUAL WILL NULLIFY ANY PRODUCT WARRANTY THAT MIGHT HAVE BEEN OTHERWISE AVAILABLE. THE USE OF OUR EQUIPMENT TO HANDLE MATERIALS OTHER THAN FREE FLOWING, NONABRASIVE AND DRY MATERIALS, AS INTENDED, WILL RESULT IN THE VOIDING OF THIS LIMITED WARRANTY.

THE FOREGOING WARRANTY SHALL NOT COVER PRODUCTS OR PARTS WHICH HAVE BEEN DAMAGED BY NEGLIGENT USE, MISUSE, ALTERATION, OR ACCIDENT. ANY NEGLIGENT USE, MISUSE, ALTERATION, OR DAMAGE DUE TO ACCIDENT, AS DETERMINED BY A COMPANY REPRESENTATIVE, MAY VOID THE WARRANTY. THIS WARRANTY COVERS ONLY PRODUCTS MANUFACTURED BY THE COMPANY. THIS WARRANTY IS EXCLUSIVE AND IN LIEU OF ALL OTHER WARRANTIES EXPRESS OR IMPLIED. WE RESERVES THE RIGHT TO MAKE DESIGN OR SPECIFICATION CHANGES AT ANY TIME, BEARING NO RESPONSIBILITY TO MAKE SIMILAR DESIGN OR SPECIFICATION CHANGES ON PREVIOUSLY SOLD MERCHANDISE.

PRIOR TO INSTALLATION, PURCHASER HAS THE RESPONSIBILITY TO RESEARCH AND COMPLY WITH ALL FEDERAL, STATE, AND LOCAL CODES WHICH MAY APPLY TO THE LOCATION AND INSTALLATION.

This Equipment shall be installed in accordance with the current installation codes and applicable regulations which should be carefully followed in all cases. Authorities having jurisdiction should be consulted before installation occurs.

a division of
THE GSI GROUP



**1004 East Illinois Street
Assumption, IL 62510
Ph: (217) 226-4421**
