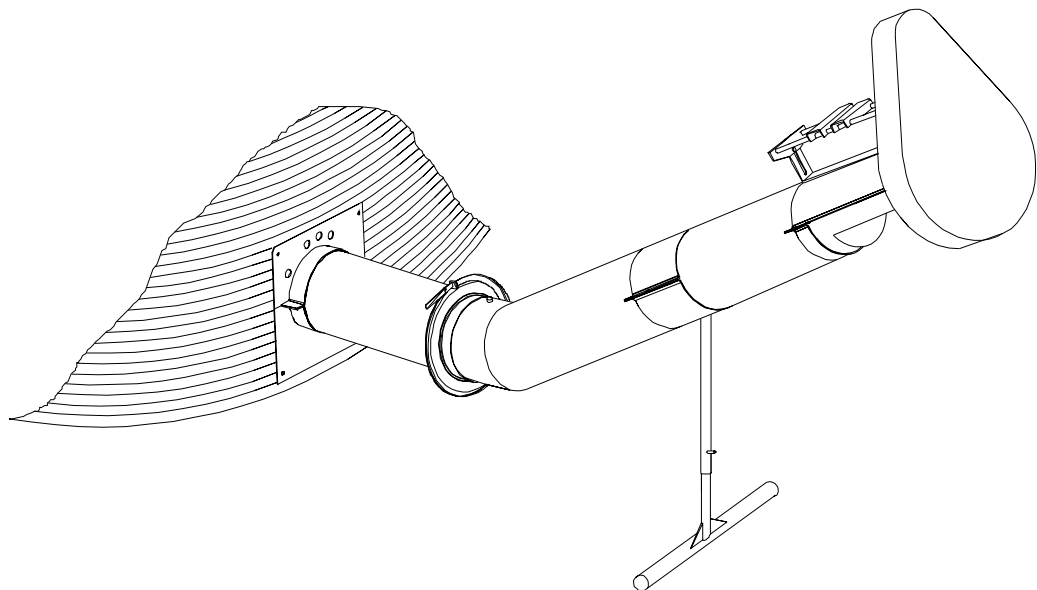


Pneg-1023
03-19-02
Revision No. 4

6"-6" , 6"-8" , 8"-8" , 8"-10" , and 10"-12"
25 Degree Bin Unloader

6"-6" , 6"-8" , 8"-8" ,
8"-10" , and 10"-12"
25 Degree
Bin Unloader

Assembly & Operation Manual



Pneg-1023
03-19-02
Revision No. 4



PNEG-1023

SAFETY GUIDELINES

This manual contains information that is important for you, the owner/operator, to know and understand. This information relates to protecting **personal safety** and **preventing equipment problems**. It is the responsibility of the owner/operator to inform anyone operating or working in the area of this equipment of these safety guidelines. To help you recognize this information, we use the symbols that are defined below.

Please read the manual and pay attention to these sections. Failure to read this manual and its safety instructions is a misuse of the equipment and may lead to serious injury or death.



This is the safety alert symbol. It is used to alert you to potential personal injury hazards. Obey all safety messages that follow this symbol to avoid possible injury or death.



DANGER indicates an imminently hazardous situation which, if not avoided, will result in death or serious injury.



WARNING indicates a potentially hazardous situation which, if not avoided, could result in death or serious injury.



CAUTION indicates a potentially hazardous situation which, if not avoided, may result in minor or moderate injury.



CAUTION used without the safety alert symbol indicates a potentially hazardous situation which, if not avoided, may result in property damage.



NOTE indicates information about the equipment that you should pay special attention to.

NOTES

SAFETY GUIDELINES

1. General Safety Guidelines

- A. **DO NOT** make any alterations to the equipment. Such alterations may produce a very dangerous situation, where **SERIOUS INJURY** or **DEATH** may occur.
- B. This equipment shall be installed in accordance with any regulations or installation codes that are required by law. Authorities having jurisdiction should be consulted before installations are made.
- C. Untrained operators subject themselves and others to **SERIOUS INJURY** or **DEATH**. **NEVER** allow untrained personnel to operate this equipment.
- D. Keep children and other unqualified personnel out of the working area at **ALL** times.
- E. **NEVER** start equipment until **ALL** persons are clear of the work area.
- F. Be sure **ALL** operators are adequately rested and prepared to perform **ALL** functions of operating this equipment.
- G. Keep hair, loose clothing, and shoestrings away from rotating and moving parts. **NEVER** wear loose fitting clothing when working around augers.
- H. **NEVER** allow any person intoxicated or under the influence of alcohol or drugs to operate the equipment.
- I. **NEVER** allow anyone inside a bin, truck, or wagon which is being unloaded by an auger or conveyor. Flowing grain can trap and suffocate in seconds.
- J. Make sure someone is nearby who is aware of the proper shutdown sequence in the event of an accident or emergency.
- K. **NEVER** work alone.
- L. **ALWAYS** think before acting. **NEVER** act impulsively around the equipment.
- M. Make sure **ALL** equipment is locked in position before operating.
- N. Keep hands and feet away from the auger intake and other moving parts.
- O. **NEVER** attempt to assist machinery operation or to remove trash from equipment while in operation.
- P. **NEVER** drive, stand, or walk under the equipment.
- Q. Use caution not to hit the auger when positioning the load.
- R. Use ample overhead lighting after sunset to light the work area.
- S. **ALWAYS** lockout **ALL** power to the equipment when finished unloading.
- T. Keep area around intake free of obstacles such as electrical cords, blocks, etc. that might trip workers.

SAFETY GUIDELINES

2. Personal Protective Equipment

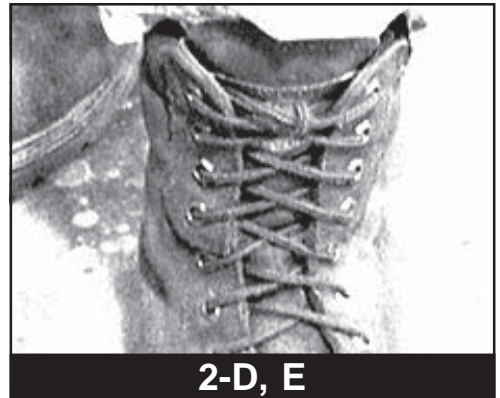
A. The proper personal protective equipment should be worn at **ALL** times by anyone in the work area.

**2-B**

B. **ALWAYS** wear safety glasses when in the work area.

**2-C**

C. The operator should **NEVER** wear jewelry.

**2-D, E**

D. Loose clothing should not be worn. Any clothing that becomes loosened should be tucked in tightly.

E. Loose or dangling shoe strings should be tucked in.

**2-F**

F. Long hair should be tied up and/or back.

SAFETY GUIDELINES

3. Emergency Shutdown Sequence

- A. In an emergency, shutdown the power source.

4. Pinch Points



NOTE: A *Pinch Point* is any place on the equipment which can injure the operator.

- A. Components of this equipment have sharp edges which can scrape and/or cut an operator.
- B. A moving auger can sever an operator's limbs or even kill him/her.

5. Shields and Guards

- A. **ALWAYS** keep **ALL** shields and guards in place during operation.

We will replace any missing shields or guards free of charge!

See (page VI) for more information on our Safety First program.

Safety **1st**

6. Operator Qualifications

- A. The User/Operator must be competent and experienced to operate auger equipment. Anyone who works with or around augers must have good common sense in order to be qualified. These persons must also know and meet all other qualifications, such as:
 - 1. Any person who has not read and/or does not understand all operation and safety procedures is not qualified to operate any auger systems.
 - 2. Certain regulations apply to personnel operating power machinery. Personnel under the age of 18 years may not operate power machinery, including augers. It is your responsibility, as owner and/or supervisor, to know what these regulations are in your area or situation.
 - 3. Unqualified or incompetent persons are to remain out of the work area.
 - 4. O.S.H.A. (Occupational Safety & Health Administration) regulations state:
"At the time of initial assignment and at least annually thereafter, the employer shall instruct every employee in the safe operation and servicing of all equipment with which the employee is, or will be involved." (Federal Occupational Safety & Health Standards for Agriculture. Subpart D, Section 19287.57 (a) (6).

SAFETY GUIDELINES

6. Operator Qualifications (*cont.*)

- B. As a requirement of OSHA, it is necessary for the employer to train the employee in the safe operating and safety procedures for this auger. We included this sign-off sheet for your convenience and personal record keeping. All unqualified persons are to stay out of the work area at all times. It is strongly recommended that another qualified person who knows the shutdown procedure is in the area in the event of an emergency. A person who has not read this manual and understands all operating and safety instructions is not qualified to operate the machine.

Date	Employer's Signature	Employee Signature
	1	
	2	
	3	
	4	
	5	
	6	
	7	
	8	
	9	
	10	
	11	
	12	
	13	
	14	
	15	
	16	
	17	
	18	
	19	
	20	
	21	
	22	

SAFETY GUIDELINES

Safety 1st

Our equipment is built to provide many years of dependable service to our customers through durable craftsmanship.

One of the most important aspects of our engineering is **SAFETY 1st** design throughout all product lines. At our company - safety is **NO ACCIDENT!**

That is why we have implemented a **SAFETY 1st** program. Should you ever need guards, shields, safety decals or owner/operator manuals, simply contact us or your local dealer, and we will supply you with them **FREE OF CHARGE!**

While it is our main goal for our company to be the world leader in auger manufacturing, it is always our first priority to keep our customers safe.

If you need any of the above listed safety items or have any safety questions, please contact the manufacturer or your local dealer.

*We replace missing guards and shields
FREE OF CHARGE!*

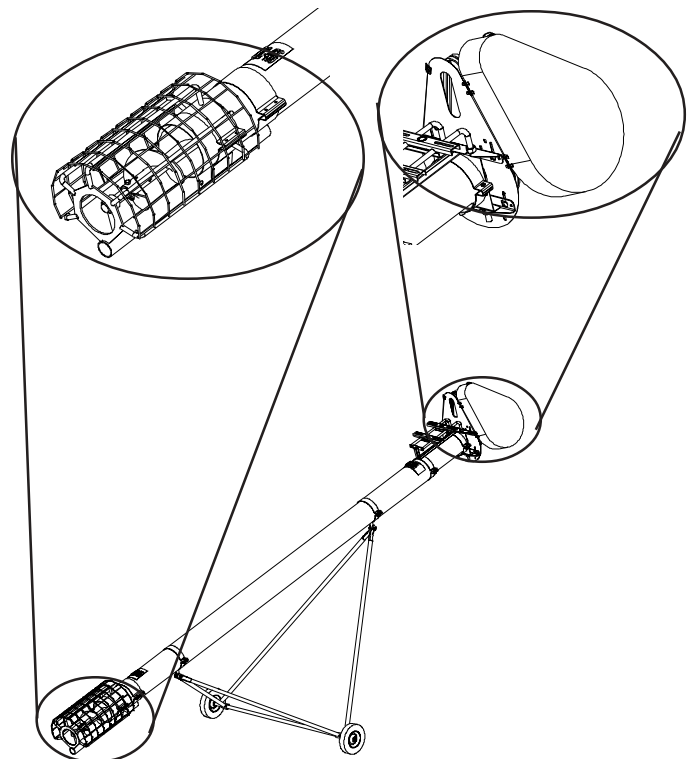


Table of Contents

Personnel operating or working around this equipment should read this manual. This manual must be delivered with equipment to its owner. Failure to read this manual and its safety instructions is a misuse of the equipment. Any misuse of the equipment may void the warranty.

Safety Guidelines	i
SAFETY 1st	vii
Table of Contents	viii
Decals	1
Introduction	4
Assembly	5
Startup	12
Operation	14
Shutdown	15
Maintenance	17
Troubleshooting	18
Parts List	19
Warranty	

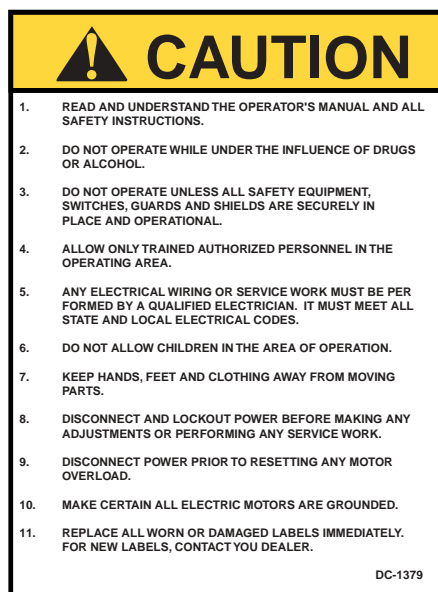
1. Decals.

A. The following images show the locations of the decals and safety signs which should appear on the 25° auger.

B. The decal below is a Warning decal. It appears on the belt guard of the 25° unload auger. Its statements should be read, and understood, failure to do so could result in **SERIOUS INJURY**, **DEATH** or property damage.



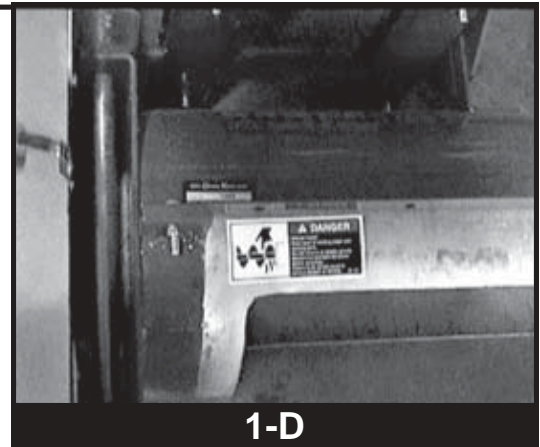
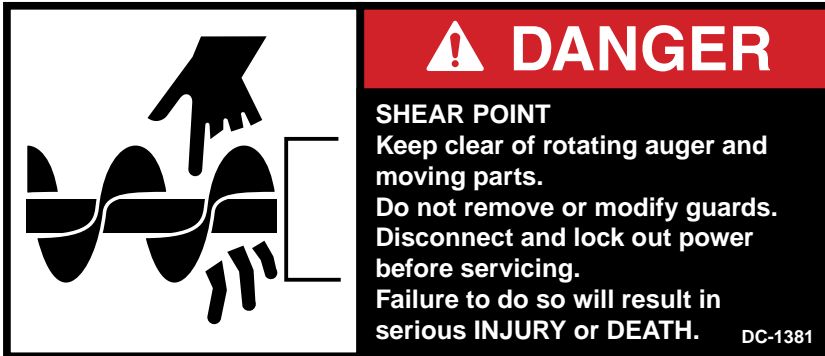
C. The decal below is a Caution decal. It appears on the belt guard of the 25° unload auger. Its statements should be read, and understood, failure to do so could result in **SERIOUS INJURY**, **DEATH** or property damage.



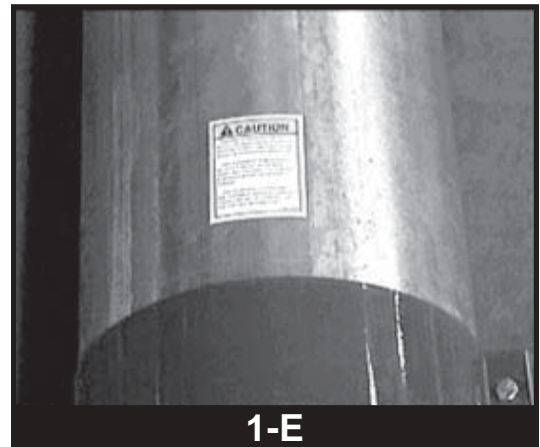
Decals

1. Decals (cont.)

D. The below pictured decal informs the operator(s) of a **DANGER - SHEAR POINT**. It appears on each side of the unload tube. Keep hands away from the auger and/or moving parts. Read this decal and heed its message. Failure to do so will result in **SERIOUS INJURY** or **DEATH**!



E. The decal below is a **CAUTION** decal. It appears on the on the unload tube of the 25° unload auger. Its statements should be read, understood, and the operator(s) should heed the information. Failure to do so could result in **SERIOUS INJURY, DEATH** or property damage.



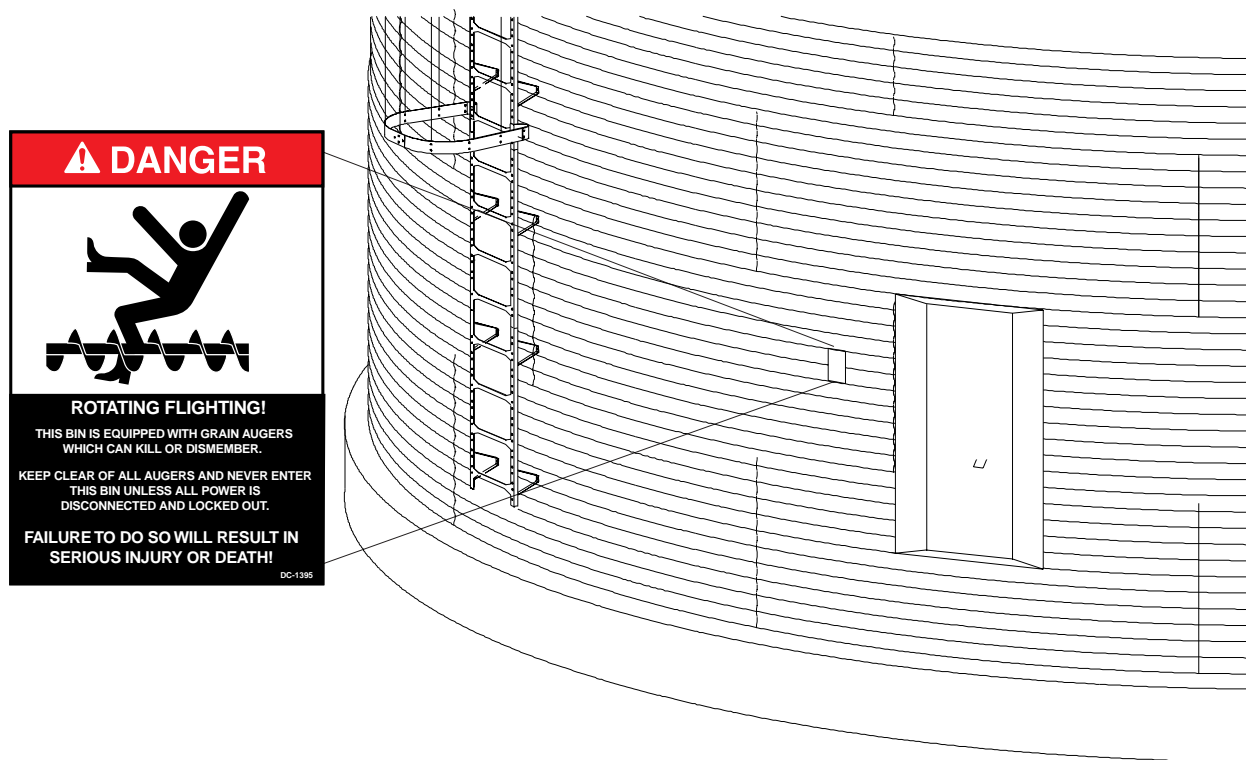
1. Decals (cont.)


F. DANGER Sign No. DC-1395 was supplied with your bin unloading equipment. This safety sign should be applied to the side of the bin near the bin opening, so it will be viewed by people entering into the bin storage building. Do not cover any safety signs or any other signs that are already there.

G.If the safety sign location suggested is not in full view because of equipment modifications, other equipment in the area or any reason, then locate the safety sign in a more suitable location.

H.Be certain the surface is clean, dry and free of dirt and oil. Peel paper backing from decals and stick into place. The adhesive backing will bond on contact.

 **Please remember, safety signs provide important safety information for people working near bin unloading equipment that is in operation.**



 **If the Safety Sign cannot be easily read for any reason or has been painted over, replace it immediately.**
Additional Safety Signs may be obtained free of charge from your dealer, distributor, or ordered from the factory.

Order SAFETY SIGN NO. DC-1395

1. General Information

- A. We reserve the right to improve our product whenever possible and practical to do so. We reserve the right to change, improve, and modify products at any time without obligation to make changes, improvements, and modifications on equipment sold previously.
- B. The 25° Unload Augers have been designed and manufactured to give years of dependable service. The care and maintenance of this machine will affect the satisfaction and service obtained. By observing the instructions and suggestions we have recommended, the owner should receive competent service for many years. If additional information or assistance should be required, please contact the factory or your local dealer.

C. Receiving Merchandise and Filing Claims

1. When receiving merchandise, it is important to check both the quantity of parts and their descriptions with the packing list enclosed within each package. All claims for freight damage or shortage must be made by the consignee within ten (10) days from the date of the occurrence of freight damage. The consignee should accept the shipment after noting the damage or loss.

2. Capacity

- A. The capacities may vary greatly under varying conditions. The following factors play a role in the performance of the auger:
- Speed
 - Angle of operation
 - Moisture content
 - Amounts of foreign matter
 - Different materials
 - Methods of feeding
- B. For example, a twenty-five percent (25%) moisture could cut capacity by as much as 40% under some conditions.

Motor Mount Assembly for 6" to 6", 6" to 8", 8" to 8", 8" to 10", and 10"-12" 25° Unloading Kit.

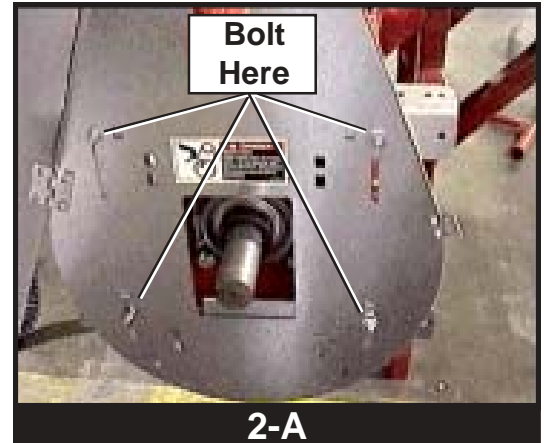
1. Install the Belt Guard Mounting.

- A. Place the belt guard mounting angles between the nuts on the motor mount rods and the head plate. Make sure that the mounting angles are facing inward toward each other. Tighten the nuts on the motor mount rods with a wrench.



2. Install the Belt Guard.

- A. Attach the belt guard to the belt guard mounting angles. Use four (4) 5/16" x 3/4" carriage bolts, flat washers and nylock nuts. Tighten with a wrench.



3. Install the Pulley.

- A. Place and position a key into the keyway located on the head stub.

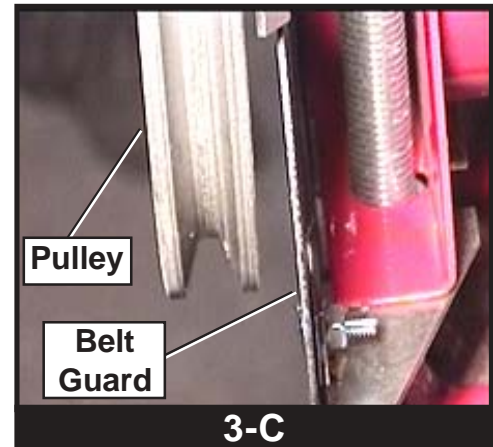


- B. Place the pulley onto the head stub with setscrews facing away from the head plate.



3. Install the Pulley (cont.)

- C. Position the pulley so that it is as close to the back of the belt guard as possible, but still able to spin freely.

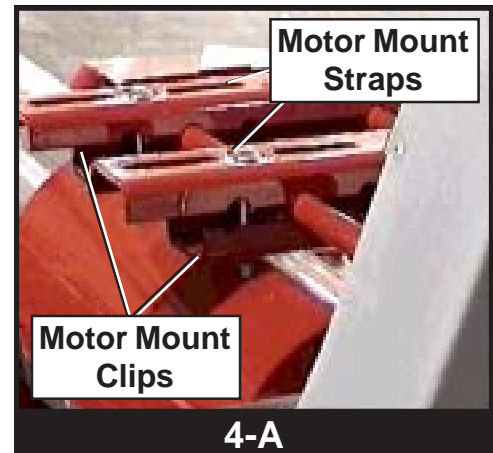


- D. Once the pulley is appropriately positioned, tighten the setscrews with a hex head wrench to secure it to the drive shaft.



4. Install and Position the Motor Mount Straps and Clips.

- A. Place the motor mount straps on top of the motor mount rods. Place the motor mount clips directly underneath the motor mount straps and bolt each pair together with 3/8" carriage bolts and locknuts. Do not tighten.



DO NOT completely tighten the bolts and nuts for the motor mount straps and motor mount clips. They will need to be adjusted to the motor.

5. Install the Motor (not provided.)

- A. Attach the motor to the drive unit making sure that the motor is parallel with the auger housing. Use carriage bolts, flatwashers, lockwashers, and nuts.
- B. Install the pulley to the motor.
- C. Align the motor pulley and driven pulley by sliding the motor mount clips and straps along the motor mount rods. Tighten the motor mount clips and straps.



The motor, motor pulley, and motor hardware are not supplied. Please see page 1 for the proper motor size.

6. Install the Belt(s.)

- A. Place the belt(s) onto the pulleys.
- B. Adjust the tension of the belt by turning the nuts located on the motor mount rods.



Do not overtighten the driving belt or excessive vibration and flight shaft breakage at the bearing could result.

7. Attach the Stand.

- A. Place the Stand underneath the unload tube with the 4" half band on top and secure it with four (4) 5/16" x 1-1/2" bolts and locknuts. This stand placement is at the discretion of the operator. Tighten it with a wrench.

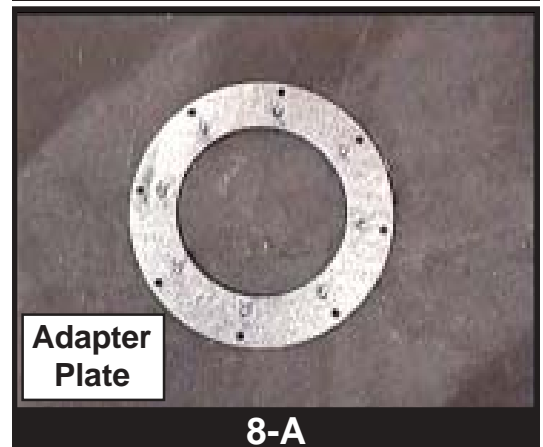


8. Attach the Adapter Plate to the Unload Tube.

- A. Place the adapter plate against the angle ring found on the unload tube. Secure it with 5/16" x 1" bolts and locknuts.

Use the following adapter plates:

6" - 8"	use 6" - 8"adapter plate.
8" -8"	adapter plate not needed.
8" - 10"	use 8" - 10"adapter plate.



9. Attach the 25° Unload Auger to the Unload Tube.

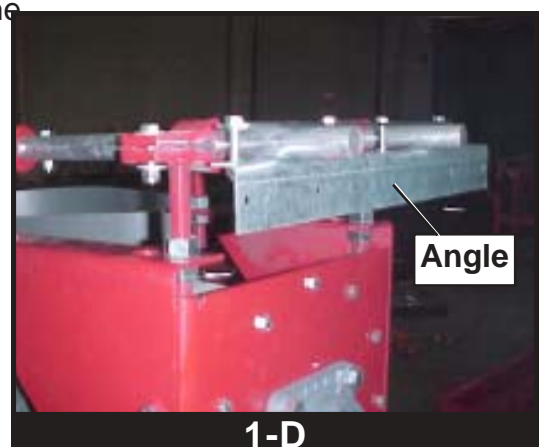
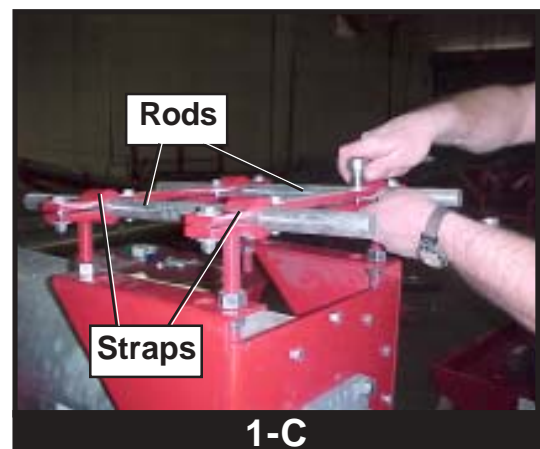
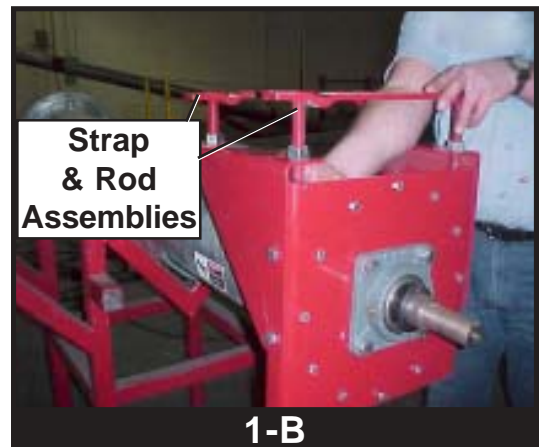
- A. Attach the connecting stub from the 25° auger to the unload flighting.
- B. Place the angle ring on the 25° unload auger against the adapter plate located on the unload tube. Line up the bolt holes and secure the two together with the quick clamp.

Assembly

Motor Mount Assembly for 12"- 25° Unloading Kit.

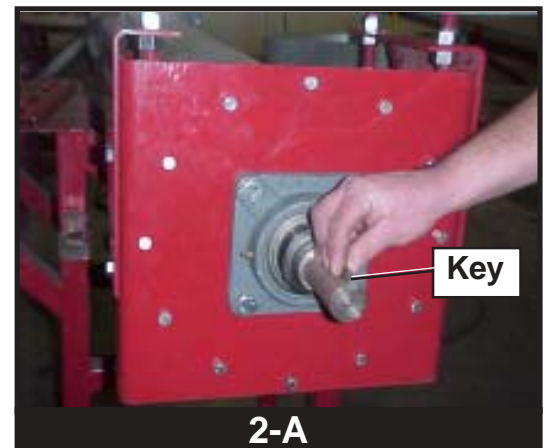
1. Install the Motor Mount Assembly.

- A. Attach the side plates to the head plate with four 1/2" x 1" bolts and four 1/2" nuts. Tighten the nuts down with a wrench.
- B. Thread four 3/4" nuts onto each threaded portion of the strap and rod assemblies. Slip the threaded rods in the holes on the side plates and thread on four more nuts. Do not tighten the nuts at this point.
- C. Put the rods into the strap and rod assemblies and place the top straps over the rods. Using eight 3/8" x 1-1/2" bolts two flat washers and one nut on each bolt secure the top straps to the strap and rod assemblies.
- D. Attach the belt guard mousing angle to the rods. Use the clamp bar and four 5/16" x 1-3/4" bolts and four 5/16" nuts to accomplish this task.



2. Install the Pulley.

- A. Place and position a key into the keyway located on the head stub.



- B. Place the pulley onto the head stub with setscrews facing away from the head plate.

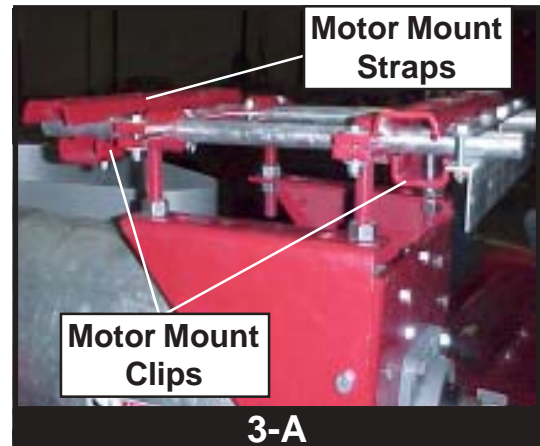


- C. Once the pulley is appropriately positioned, tighten the setscrews with a hex head wrench to secure it to the drive shaft.



3. Install and Position the Motor Mount Straps and Clips.

- A. Place the motor mount straps on top of the motor mount rods. Place the motor mount clips directly underneath the motor mount straps and bolt each pair together with 3/8" carriage bolts and locknuts. Do not tighten.



DO NOT completely tighten the bolts and nuts for the motor mount straps and motor mount clips. They will need to be adjusted to the motor.

4. Install the Motor (not provided.)

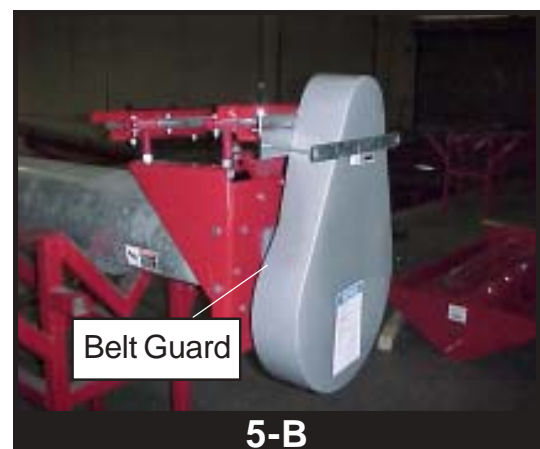
- A. Attach the motor to the drive unit making sure that the motor is parallel with the auger housing. Use carriage bolts, flatwashers, lockwashers, and nuts.
- B. Install the pulley to the motor.
- C. Align the motor pulley and driven pulley by sliding the motor mount clips and straps along the motor mount rods. Tighten the motor mount clips and straps.



The motor, motor pulley, and motor hardware are not supplied. Please see page 1 for the proper motor size.

5. Install the Belt(s) and Belt Guard.

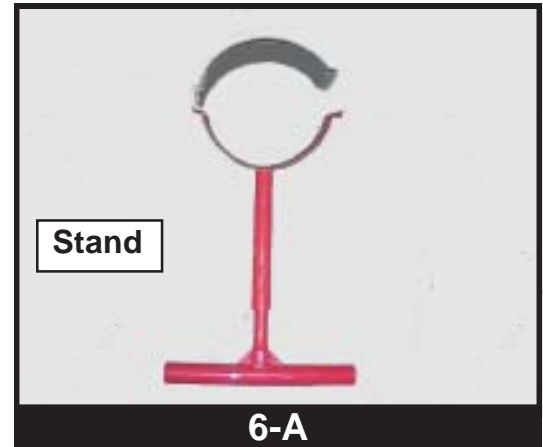
- A. Install the belt(s) over the pulleys. Belt tension can be fixed by adjusting the height of the motor by turning the 3/4" nuts on the threaded rods.
- B. Attach the belt guard to the belt guard angle. Use two 1/4" x 5" bolts with nuts.



Do not overtighten the driving belt or excessive vibration and flight shaft breakage at the bearing could result.

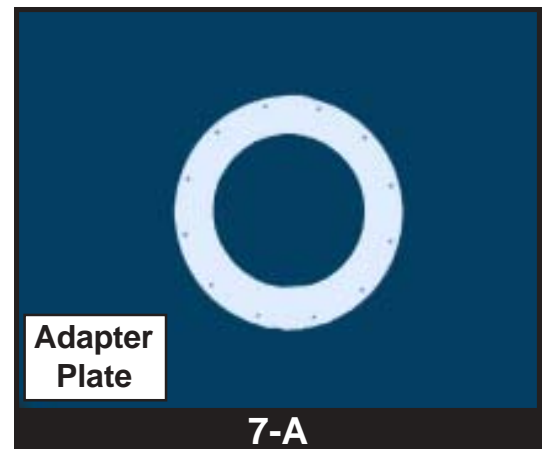
6. Attach the Stand.

- A. Place the Stand underneath the unload tube with the 4" half band on top and secure it with four (4) 5/16" x 1-1/2" bolts and locknuts. This stand placement is at the discretion of the operator. Tighten it with a wrench.



7. Attach the Adapter Plate to the Unload Tube.

- A. Place the 10-12" adapter plate against the angle ring found on the unload tube. Secure it with 5/16" x 1" bolts and locknuts.



8. Attach the 25° Unload Auger to the Unload Tube.

- A. Attach the connecting stub from the 25° auger to the unload flighting.
- B. Place the angle ring on the 25° unload auger against the adapter plate located on the unload tube. Line up the bolt holes and secure the two together with the quick clamp.

1. Perform Pre-start Checks.



Failure to perform any or all of these pre-start checks may cause damage to the equipment and/or cause **SERIOUS INJURY** or **DEATH** to those in the work area.

Failure to perform any or all of these pre-start checks may also be a misuse of the equipment. Any misuse of the equipment may void the warranty.

A. Make sure ALL belts are tensioned properly.

B. Make sure ALL shields are in place and that the belt(s) and pulley(s) are able to move freely.



ALWAYS keep ALL guards and shields in place, until all the power is disconnected and locked out.

C. Inspect the drive unit for any problems or potential problems.

D. Be aware of any emergency shutdown procedures. Two (2) people must always be in a position where the operation of the equipment can be monitored.

E. Before starting the auger for the first time, make sure that all parts are assembled correctly according to the instructions in this manual.



Make certain **ONLY** trained operators are in the work area before operating or moving the machine. Two (2) people must always be in a position where the operation of the equipment can be monitored.

2. Start the Auger.

A. Start the auger.



DO NOT start or stop the auger while it is under load. Doing so may cause the auger to “jam.”

B. Run the auger through a “break-in” period, if it is being used for the first time or for the first time of the season.

C. Polish the flighting by running the auger at partial capacity until it is smooth, before attempting full capacity.



Failures may occur if the auger is run full before it has been “polished” during the “break-in” period.



NEVER operate the auger empty. Operating augers empty for any length of time will cause excessive wear.

NEVER operator the auger at speeds higher than recommended. Auger flight speed in excess of recommended speed causes excessive wear.



Be aware of any unusual vibration or noises during the initial startup and “break-in” period. If anything unusual is detected, immediately shutdown the auger, and disconnect and lockout the power supply before servicing.

1. Operate the Auger.



The auger capacity can fluctuate greatly under varying conditions. Moisture content, different commodities, amount of foreign matter and speeds all play a part in the performance of the auger. Twenty-five percent (25%) moisture may cut capacity by as much as 40% under some conditions.

A. Make certain there are at least two (2) people in the work area to monitor operations at all times.

B. Visually inspect the auger periodically during operation.



Be alert for any unusual vibrations, noises and the loosening of any fasteners. If anything unusual is detected, immediately shutdown the auger, disconnect and lockout the power source before servicing.

C. Consideration should be given to the proper size auger for a batch drying or any intermittent type operations. When augers are stopped and restarted under full load, it may result in damage to the auger. Using a larger diameter auger and reducing its load level will be far better than subjecting a smaller diameter auger to big loads. If an auger is kept from absolute filling, it will make startup easier and will convey more efficiently.

1. Normal Shutdown.

- A. Before shutting down the unit, be sure the hoppers and augers are empty.
- B. Disconnect and lockout the power source before leaving the work area.

2. Emergency Shutdown.

- A. Know how to shutdown the auger in case of an emergency.
- B. Do not restart the auger while it is under load.



NEVER start the equipment under load. Doing so may cause damage. This type of damage is considered a misuse of the equipment. Any misuse of the equipment may void the warranty.

- C. Close the bin well control gates.
- D. Reconnect and unlock the power source.
- E. Clear the auger gradually, until there is no grain and there are no obstructions.

3. Storage Preparation.

- A. Close all wells to the discharge auger.
- B. Be sure the unload tube is empty.
- C. Shutdown the auger.
- D. Make sure all fasteners are tight.

1. Maintain the Auger.

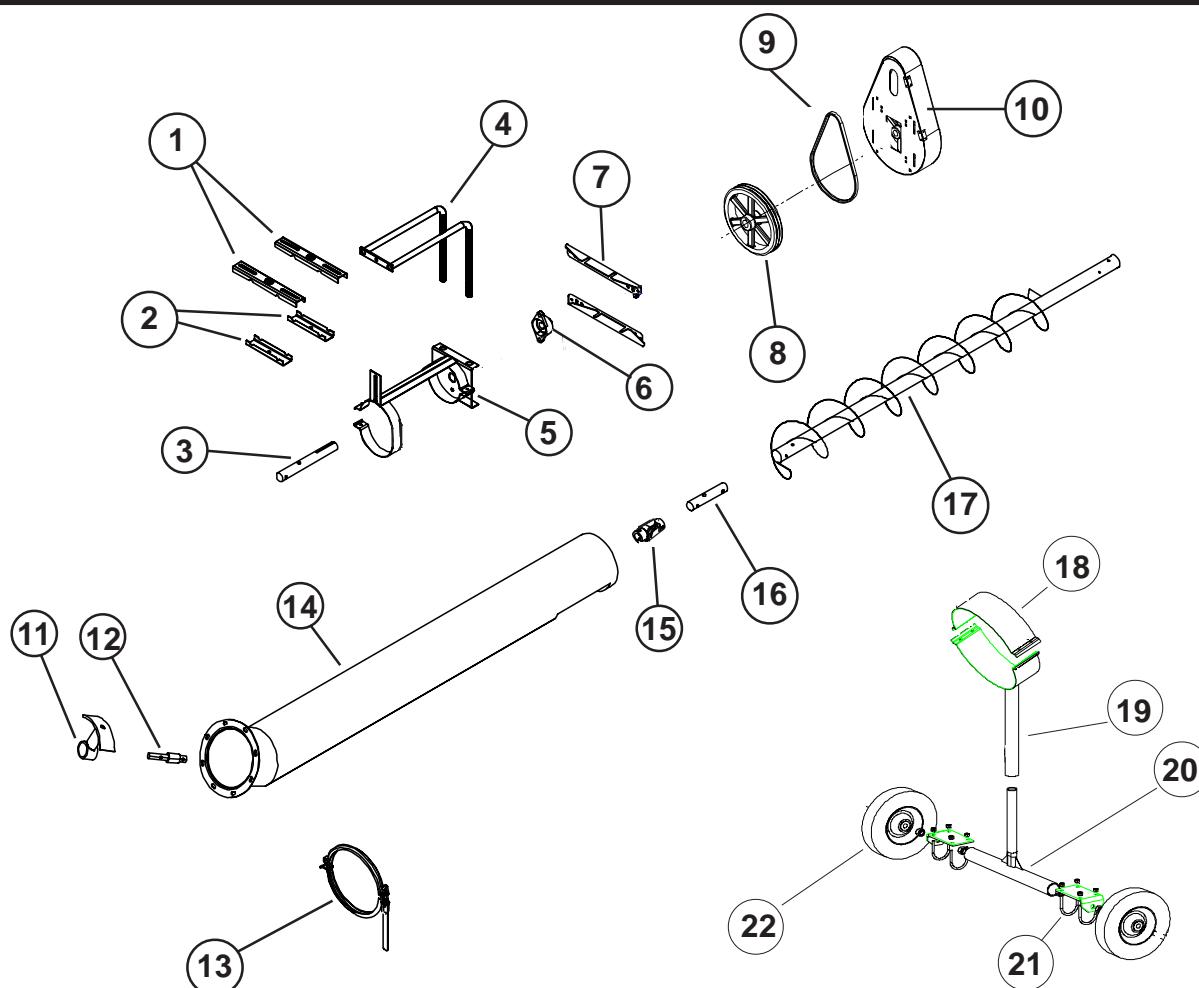


ALWAYS shutdown and disconnect the power supply before adjusting, servicing or cleaning the equipment.

- A. Use caution when repairing or replacing equipment parts.
- B. Make sure ALL decals are legible and tightly attached to the auger. If necessary, replace them **FREE OF CHARGE** by contacting your dealer or the manufacturer.
- C. Ensure that ALL electric motors, etc. are operating at the proper speed.
- D. Maintain proper adjustments on the belt(s).
- E. Mount controls for any electric motors at a safe distance from the machine and in a location accessible in case of an emergency.
- F. Make sure ALL electrical wiring is not damaged, and that it meets proper wiring codes.
- G. Make sure ALL components are in good working condition before use.
- H. Make sure all components are in good working condition before use.
- I. Check the auger flighting to make sure it is in good working condition.
- J. Check the internal bearing bracket, bearing and universal joint to make sure they are in good working order.
- K. Grease bearing at least two (2) times each season, if necessary.

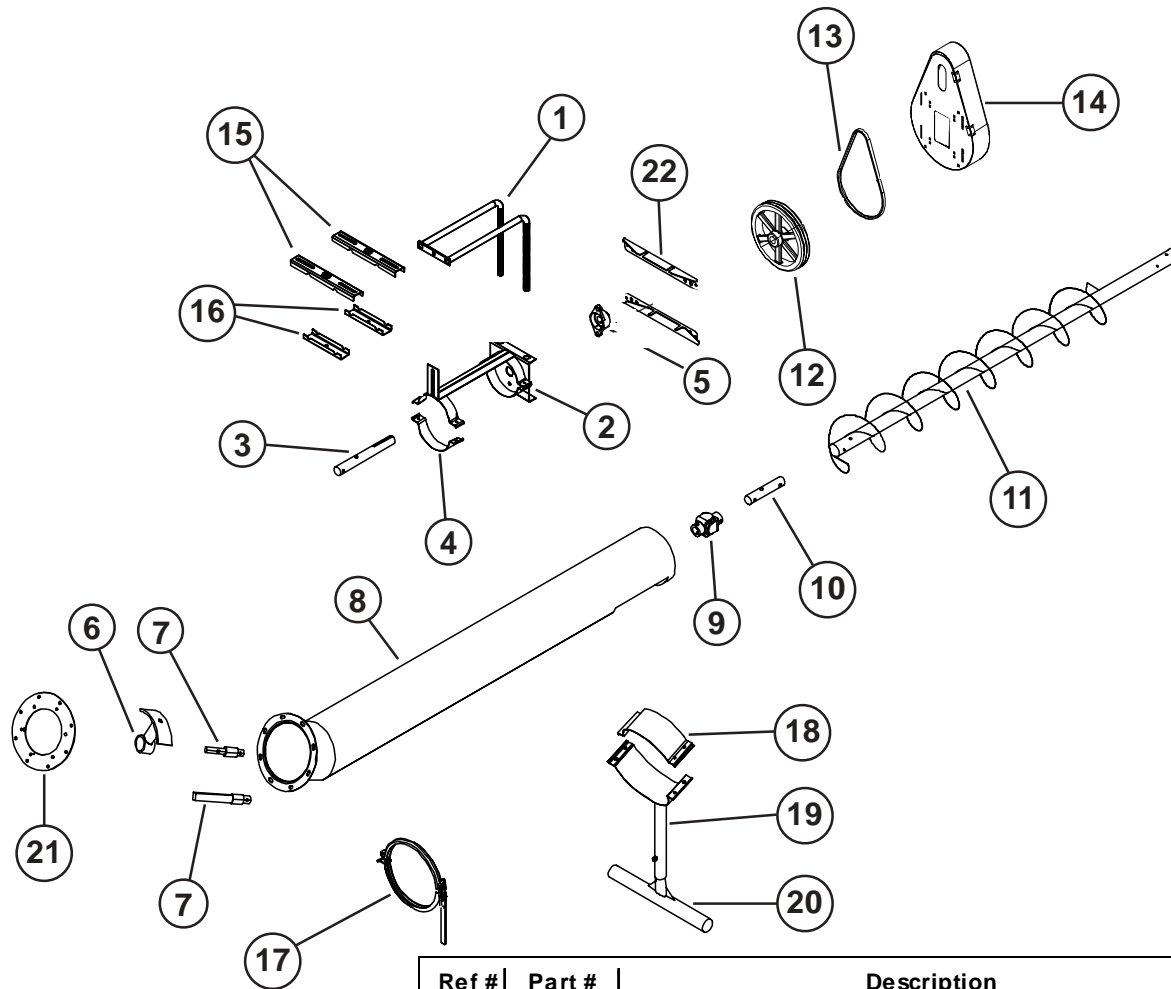
<i>Problem</i>	<i>Possible Cause</i>	<i>Solution</i>
1. Auger vibration.	A. Drive belt may be overtightened, putting head stub and flight in a bind. Damage can occur to the auger flighting, thus causing noise. Damage usually is caused from foreign material having been run through the auger.	A1. It may be necessary to remove the flighting for inspection.
2. Low capacity.	A. The auger may not be getting enough grain.	A1. Check that the intake has not bridged over, restricting flow. The exposed flighting at the auger intake should be covered with grain to achieve maximum capacity.
	B. The auger is moving too slowly.	B1. Check the auger speed. Speeds slower than the recommended speed will result in low capacity.
3. Auger plugs.	A. The auger may be getting too much grain, causing "jamming" inside the housing.	A1. Decrease the amount of grain the auger is gathering.
	B. The motor may be too small or wired improperly.	B1. If the motor is a newer lightweight aluminum type, the next larger size should be considered.
	C. The grain may be wet.	C1. If wet grain or other hard-to-move material is being augered, use a larger size motor than recommended for normal use.
	D. The auger may be jammed with foreign material.	D1. Be sure there is no foreign material in the auger such as sacks, tarp corners, etc.
	E. The discharge end may be plugged.	E1. Make sure the discharge end of the auger is not plugged. A plug of the discharge end will cause an auger plug.

6"-6" 25° Bin Unloader



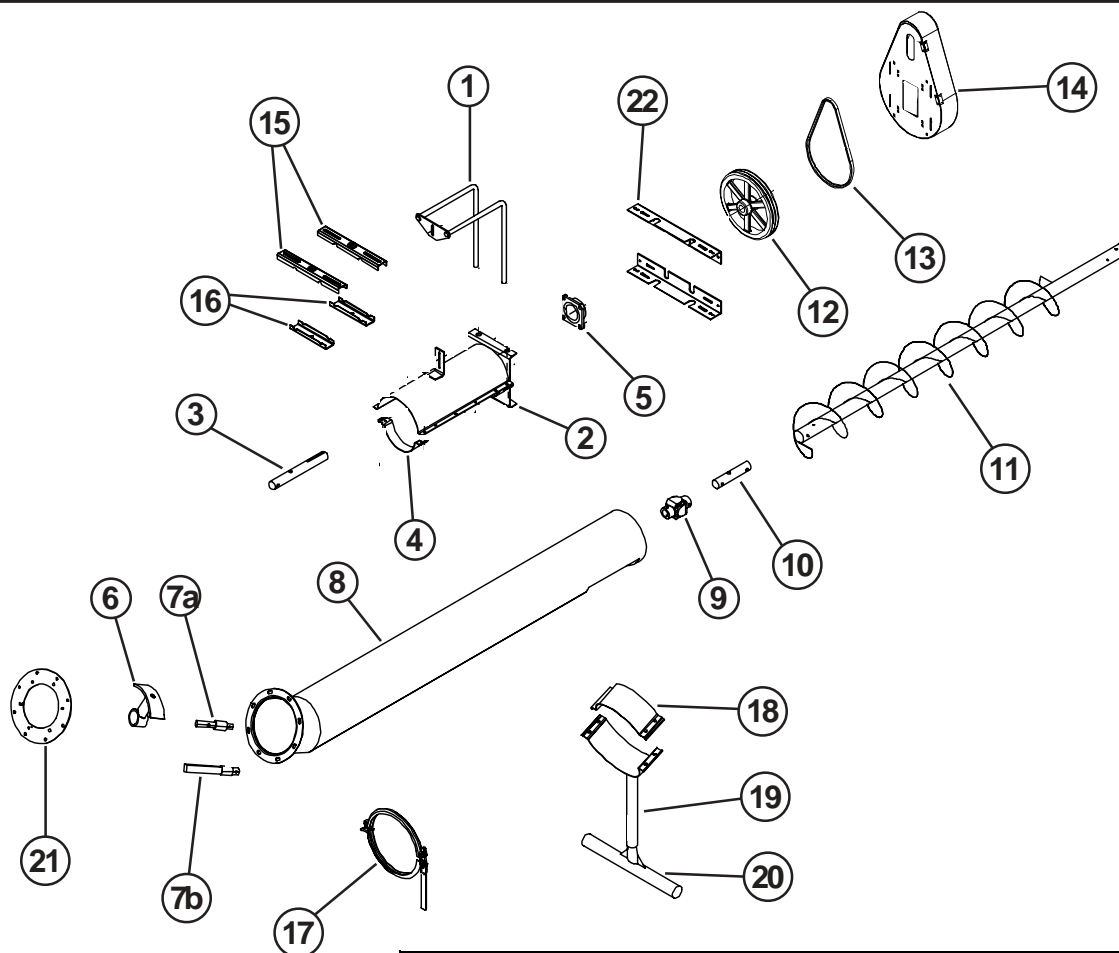
Ref #	Part #	Description	Qty
1	GK1063	Top Motor Mount Strap	2
2	GK1064	Motor Mount Clip	2
3	GK2025	1"x10" Head Stub	1
4	GK1312	Motor Mount Rod Assembly	1
5	GK1866	Head Plate Assembly	1
6	GK1049	2 Hole Flange Bearing	1
7	GK1311	Belt Guard Mounting Angle	2
8	GK1321	2Belt Groove Sheave	1
9	GK1308	B46 Belt	2
10	GK2039	Belt Guard	1
11	GK1454	Internal Beraing Assembly	1
12	GK5706	Bearing Connectin Stub	1
13	GK1013	6" Flange Clamp	1
14	GK2826	6" Auger Housing	1
15	GK1266	U-Joint	1
16	GK1267	Close Connecting Stub	1
17	GK2827	Flight Assembly	1
18	GK1122	6" Flange Clamp	1
19	GK2825	6" Stand Bracket	1
20	GK1277	Stand Base	1
21	GK2970	Wheel Mounting Bracket	2
22	GK2969	10" Wheel Assembly	2

6"-8" and 8"-8" 25° Bin Unloader



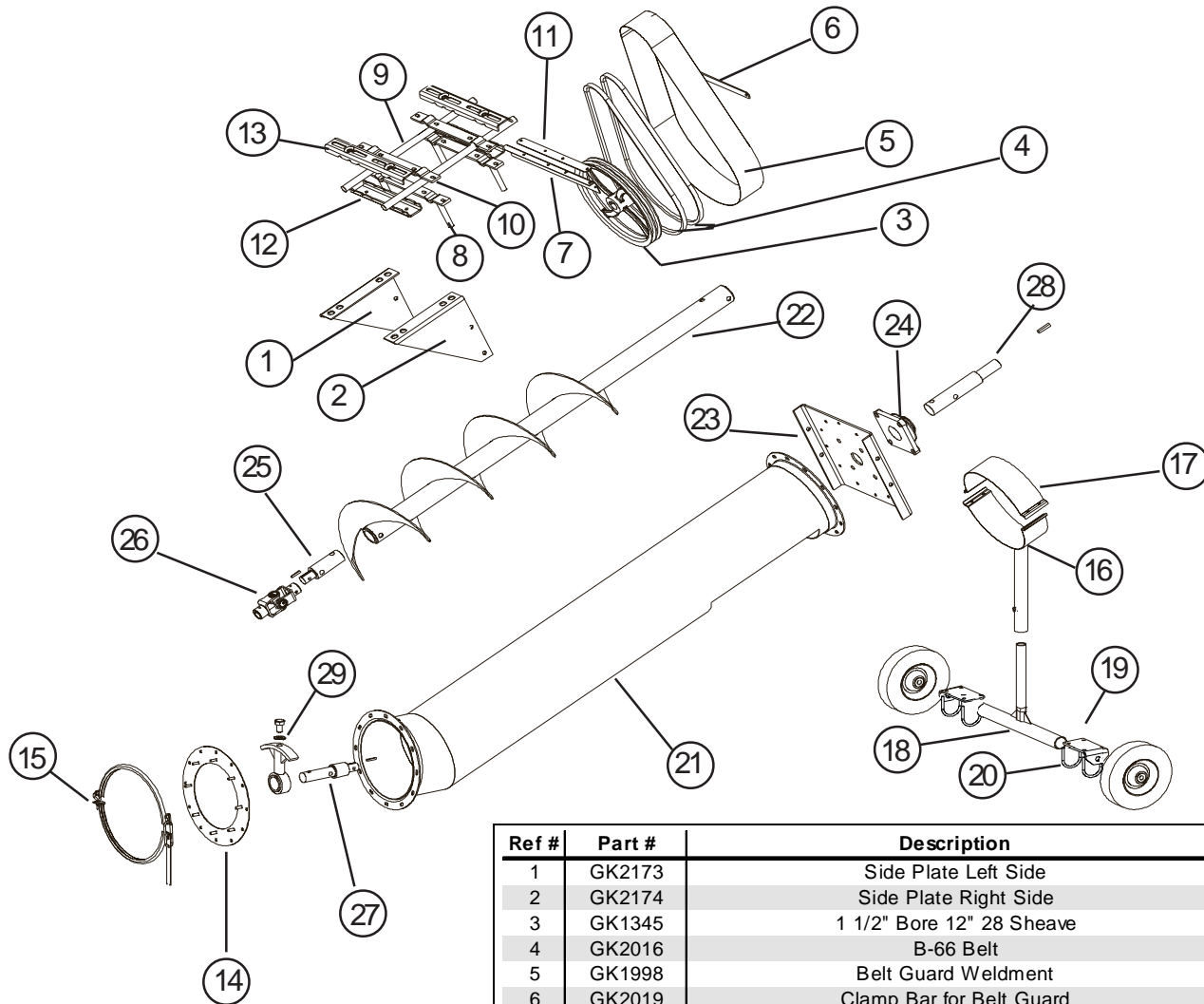
Ref #	Part #	Description	Qty
1	GK1327	Motor Mount Rod Weldment	1
2	GK1329	Head Plate Assembly	1
3	GK1260	Head Stub for Incline Fighting, 1-1/4" x 10" Long	1
4	GK1055	2" Wide 8" Half Band (galv.)	1
5	GK1330	1-1/4" 2-hole Flange Bearing	1
6	GK1263	Internal Bearing Bracket w/ Bushing, Bolt & Lockwasher	1
7	GK5704	Bearing Connecting Stub 6"-8"	1
7	GK1283	Bearing Connecting Stub 8"-8"	1
7	GK1993	6"-8", 8"-8" Sq. to Rd. Stub for Power Sweep	1
8	GK1265	Discharge Tube	1
9	GK1266	U-joint (1" to 1") 5" long	1
10	GK1267	Connecting Stub	1
11	GK1268	Discharge Fighting	1
12	GK1335	12" 2-Groove Sheave (1-1/4" Bore)	1
13	GK1323	B-48 Belt	2
14	GK1454	Belt Guard Assembly	1
15	GK1063	Top Motor Mount Straps 12" Long	2
16	GK1064	Bottom Motor Mount Clips 7" Long	2
17	GK1279	8" Quick Connect	1
18	GK1059	4" Wide 8" Half Band (galv.)	1
19	GK1278	8" Stand Bracket	1
20	GK1277	Stand Base	1
21	GK1280	6" - 8" Adaptor Plate	1
22	GK1311	Belt Guard Mounting Angle	2

8"-10" 25° Bin Unloader



Ref #	Part #	Description	Qty.
1	GK1350	Motor Mount Rod Weldment	1
2	GK1349	Motor Mount Head Plate Weldment	1
3	GK1289	Head Stub - 1-1/2" x 11-1/2" Long	1
4	GK1057	2" Wide 10" Half Band (galv.)	1
5	GK1343	1-1/2" 4-Hole Flange Bearing w/Lock Collar	1
6	GK1293	Internal Bearing Bracket w/ Bushing, Bolt & Lockwasher	1
7a	GK1292	Bearing Connecting Stub (1-1/2") 8-1/8" Long 8"-10"	1
7b	GK1996	8" - 10" Sq. to Rd. Stub	1
8	GK1287	Discharge Tube	1
9	GK1291	U-joint (1-1/4" to 1-1/4") 7" Long	1
10	GK1290	Connecting Stub	1
11	GK1288	Discharge Flighting	1
12	GK1345	2B Grove Sheave 15" O.D. w/ 1-1/2" Bore	1
12	GK1304	3B Grove Sheave 15" O.D. w. 1-1/2" Bore	1
13	GK1346	B-57 Belt	2
13	GK1346	B-57 Belt	3
14	GK1454	Belt Guard Assembly	1
15	GK1342	Top Motor Mount Straps 18" Long	2
16	GK1341	Bottom Motor Mount Clips 13" Long	2
17	GK1299	Quick Connect	1
18	GK1301	4" Wide 10" Half Band (galv.)	1
19	GK1300	10" Stand Bracket	1
20	GK1277	Stand Base	1
21	GK1298	8" - 10" Adaptor Plate	1
22	GK1344	Belt Guard Mounting Angle	2

10"-12" 25° Bin Unloader



Ref #	Part #	Description	Qty.
1	GK2173	Side Plate Left Side	1
2	GK2174	Side Plate Right Side	1
3	GK1345	1 1/2" Bore 12" 28 Sheave	1
4	GK2016	B-66 Belt	2
5	GK1998	Belt Guard Weldment	1
6	GK2019	Clamp Bar for Belt Guard	1
7	GK2017	20" Long Mounting Angle	1
8	GK2015	Strap and Rod Assemble	2
9	GK1893	Motor Mount Rod	2
10	GK1901	Top Strap	2
11	GK2018	Clamp Bar for mounting Angle	1
12	GK1341	13.00" Motor Mount Clip	2
13	GK1342	Motor Mount	2
14	GK2013	Adapter Plate Weldment	1
15	GK2012	12" Quick Clamp Assembly	1
16	GK2011	Top Stand	1
17	GK2014	4" Wide 12" Galv. Steel Halfband	1
18	GK1277	Base Support Stand	1
19	GK2970	Bracket Wheel Mount	2
20	S-8414	U-Bolt 3/8-16x2 1W x 2.625 IL ZN	4
21	GK2002	Tube Weldment	1
22	GK2001	12" Flight Weldment	1
23	GK2005	Head Plate	1
24	GK2004	2" 4 Hole Flange Brng W/Lock Collar	1
25	GK2008	Connecting Stub	1
26	GK2009	U-Joint 1 1/4" Bore 7 1/4" Long	1
27	GK2422	Bearing Connection Stub 8.5"	1
27	GK2007	1-1/4" O.D.- 1-1/4" Sq. to Rd. Stub	1
28	GK2006	Head Stub 2 x 12	1
29	GK2003	Internal Bearing Bracket Assembly	1

THE COMPANY WARRANTS ALL PRODUCTS MANUFACTURED TO BE FREE OF DEFECTS IN MATERIAL AND WORKMANSHIP UNDER NORMAL USAGE AND CONDITIONS FOR A PERIOD OF TWELVE (12) MONTHS AFTER RETAIL SALE TO THE ORIGINAL END USER OF SUCH PRODUCTS. OUR ONLY OBLIGATION IS, AND PURCHASER'S SOLE REMEDY SHALL BE TO REPAIR OR REPLACE, AT THE COMPANY'S OPTION AND EXPENSE, PRODUCTS THAT, IN THE MANUFACTURERS SOLE JUDGEMENT, CONTAIN A MATERIAL DEFECT DUE TO MATERIALS OR WORKMANSHIP. ALL DELIVERY AND SHIPMENT CHARGES TO AND FROM THE FACTORY WILL BE PURCHASER'S RESPONSIBILITY. EXPENSES INCURRED BY OR ON BEHALF OF THE PURCHASER WITHOUT PRIOR WRITTEN AUTHORIZATION FROM AN AUTHORIZED EMPLOYEE OF THE COMPANY SHALL BE THE SOLE RESPONSIBILITY OF THE PURCHASER.

EXCEPT FOR THE ABOVE EXPRESS LIMITED WARRANTIES, THE COMPANY MAKES NO WARRANTY OF ANY KIND, EXPRESSED OR IMPLIED, INCLUDING, WITHOUT LIMITATION, WARRANTIES OF MERCHANTABILITY OR FITNESS FOR A PARTICULAR PURPOSE OR USE IN CONNECTION WITH (i) PRODUCT MANUFACTURED OR SOLD BY THE COMPANY OR (ii) ANY ADVICE, INSTRUCTION, RECOMMENDATION OR SUGGESTION PROVIDED BY AN AGENT, REPRESENTATIVE OR EMPLOYEE OF THE COMPANY REGARDING OR RELATED TO THE CONFIGURATION, INSTALLATION, LAYOUT, SUITABILITY FOR A PARTICULAR PURPOSE, OR DESIGN OF SUCH PRODUCT OR PRODUCTS.

IN NO EVENT SHALL THE COMPANY BE LIABLE FOR ANY DIRECT, INDIRECT, INCIDENTAL, OR CONSEQUENTIAL DAMAGES, INCLUDING, WITHOUT LIMITATION, LOSS OF ANTICIPATED PROFITS OR BENEFITS. PURCHASER'S SOLE AND EXCLUSIVE REMEDY SHALL BE LIMITED TO THAT STATED ABOVE, WHICH SHALL NOT EXCEED THE AMOUNT PAID FOR THE PRODUCT PURCHASED. THIS WARRANTY IS NOT TRANSFERABLE AND APPLIES ONLY TO THE ORIGINAL PURCHASER. WE SHALL HAVE NO OBLIGATION OR RESPONSIBILITY FOR ANY REPRESENTATIVE OR WARRANTIES MADE BY OR ON BEHALF OF ANY DEALER, AGENT OR DISTRIBUTOR OF THE COMPANY.

THE COMPANY ASSUMES NO RESPONSIBILITY FOR FIELD MODIFICATIONS. MODIFICATIONS TO THE PRODUCT NOT SPECIFICALLY COVERED BY THE CONTENTS OF THIS MANUAL WILL NULLIFY ANY PRODUCT WARRANTY THAT MIGHT HAVE BEEN OTHERWISE AVAILABLE. THE USE OF OUR EQUIPMENT TO HANDLE MATERIALS OTHER THAN FREE FLOWING, NONABRASIVE AND DRY MATERIALS, AS INTENDED, WILL RESULT IN THE VOIDING OF THIS LIMITED WARRANTY.

THE FOREGOING WARRANTY SHALL NOT COVER PRODUCTS OR PARTS WHICH HAVE BEEN DAMAGED BY NEGLIGENT USE, MISUSE, ALTERATION, OR ACCIDENT. ANY NEGLIGENT USE, MISUSE, ALTERATION, OR DAMAGE DUE TO ACCIDENT, AS DETERMINED BY A COMPANY REPRESENTATIVE, MAY VOID THE WARRANTY. THIS WARRANTY COVERS ONLY PRODUCTS MANUFACTURED BY THE COMPANY. THIS WARRANTY IS EXCLUSIVE AND IN LIEU OF ALL OTHER WARRANTIES EXPRESS OR IMPLIED. WE RESERVES THE RIGHT TO MAKE DESIGN OR SPECIFICATION CHANGES AT ANY TIME, BEARING NO RESPONSIBILITY TO MAKE SIMILAR DESIGN OR SPECIFICATION CHANGES ON PREVIOUSLY SOLD MERCHANDISE.

PRIOR TO INSTALLATION, PURCHASER HAS THE RESPONSIBILITY TO RESEARCH AND COMPLY WITH ALL FEDERAL, STATE, AND LOCAL CODES WHICH MAY APPLY TO THE LOCATION AND INSTALLATION.

This Equipment shall be installed in accordance with the current installation codes and applicable regulations which should be carefully followed in all cases. Authorities having jurisdiction should be consulted before installation occurs.

a division of

THE GSI GROUP



**1004 East Illinois Street
Assumption, IL 62510
217-226-4421 Phone**
